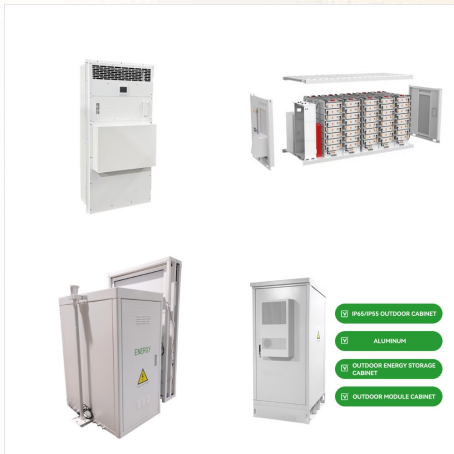




Heard??v ostrov nikdo nenav??t?vil a? 3/4 do poloviny 50. let 19. stolet?.Pravd??podobn?? jej jako prvn? spat??il britsk? lovec tule???? Peter Kemp dne 27. listopadu 1833.Kemp cestoval lod? Magnet z Kerguelen?? do Antarktidy a ?dajn?? jej zanesl do n?mo??n?ch map.. 25. listopadu 1853 ostrov uvid??l americk? lovec tule???? a kapit?n obchodn? lodi Oriental John Heard p??i cest?? z



Les ?les Heard-et-MacDonald, en anglais Heard and McDonald Islands et Territory of Heard Island and McDonald Islands [1], sont un territoire ext?rieur de l'Australie situ? dans le sud de l'oc?an Indien, sur la plaque antarctique.Il est constitu? d'un petit archipel, les ?les McDonald, ainsi que d'une ?le isol?e, l'?le Heard.Situ? ? 422 km au sud-sud-est des ?les Kerguelen, ? 1 ???



Heard and McDonald Islands. In fact Heard and McDonald Islands are far to the south west of mainland Australia, in the south of the Indian Ocean (near Kerguelen Island, approximately 73 degrees east, 53 degrees south -- reference: The Times Atlas of the World) There was a scientific base on Heard Island in the 1950s but it is not currently staffed.

HEARD AND MCDONALD ISLANDS YOGI SOLAR



Heard Island and McDonald Islands are located in the Southern Ocean, approximately 1,700 km from the Antarctic continent and 4,100 km south-west of Perth. As the only volcanically active subantarctic islands they "open a window into the earth", thus providing the opportunity to observe ongoing geomorphic processes and glacial dynamics.



? 1/4 ? Heard Island? 1/4
?,,3800,2000,40,???1953,???1997??????????? ???



? 1/4 ?? 1/4 ? Heard Island and McDonald Islands,?
1/4 ?HIMI? 1/4 ?,1947 ,1997? 1/4 ????? 1/4 ????
1600? 1/4 ?1000,3700

HEARD AND MCDONALD ISLANDS

YOGI SOLAR



HEARD AND MCDONALD ISLANDS AUSTRALIA
 Heard Island and the McDonald Islands are in the Southern Ocean, approximately 4,100 km south-west of Perth and 1,700 km from the Antarctic continent. Their distinctive conservation value is as one of the world's rare pristine island ecosystems which have virtually no ???



Heard Island and McDonald Islands in the Southern Ocean A map of Heard Island and McDonald Islands. Heard Island, by far the largest of the group, is a 368-square-kilometre (142 sq mi) mountainous island covered by 41 glaciers [21] (the island is 80% covered with ice [1]) and dominated by the Big Ben massif has a maximum elevation of 2,745 metres (9,006 ft) at ???



? 1/4 ?? 1/4 ? Heard Island and McDonald Islands,?
 1/4 ?HIMI? 1/4 ?,1947 ,1997? 1/4 ????? 1/4 ?????
 1600? 1/4 ?1000,3700

HEARD AND MCDONALD ISLANDS

YOGI SOLAR



The barren island of Heard and McDonald were once under the United Kingdom before it became a territory of Australia. The UK union jack flag is considered the only previous flag to have been used on the Heard and McDonald Islands. It was first hoisted on the island in 1910. Later on, in 1947, the island fell into Australian authority, and since



(? 1/4 ?Heard Island and McDonald Islands,? 1/4 ?HIMI),,1947,1997 (???)???HIMI1600???



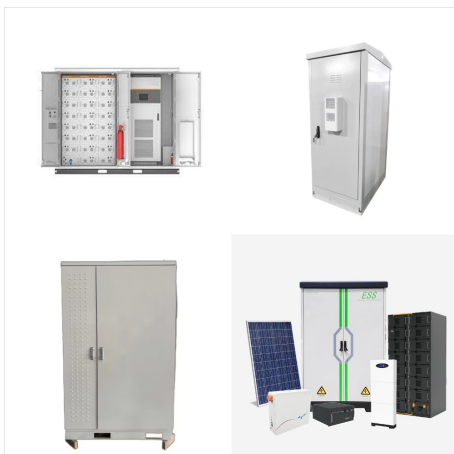
L'isola Heard e le isole McDonald sono isole disabitate che si trovano nell'Oceano Antartico, a circa due terzi di distanza tra il Madagascar e l'Antartide. Esse costituiscono un territorio esterno australiano dal 1947 e contengono i due soli vulcani attivi presenti sul territorio australiano, uno dei quali (Mawson Peak) ? anche la montagna australiana pi? elevata, con 2.745 metri.

HEARD AND MCDONALD ISLANDS

YOGI SOLAR



???????????? 3/4 ?? ???u???? ?, ? 3/4 ???????
 3/4 ?????? ?????????? 3/4 ??? 1/2 ???>???? (???
 1/2 ???>. Heard Island and McDonald Islands, ???
 3/4 ????????????? 1/2 ? 1/2 ? 3/4 HIMI) ??? ? 1/2
 ?u??? 3/4 ?>????? 3/4 ?? ? 1/2 ?u? 3/4
 ???,?????u? 1/4 ????? [1] ???????,????u?>????
 ?? ?????? 1/2 ? 3/4 ?? ??????????, ??? 1/2
 ???,???????? 3/4 ??? 3/4 ? 3/4 ???u??? 1/2 ??,???
 3/4 ?????? 3/4 ?,?? ?,?? ?????????? ? 3/4 ??? 1/2 ?
 3/4 ??? 1/2 ????? ? 3/4 ????????? 3/4 ??? 3/4 ?? ???
 ???u???? ?, ?????????? 3/4 ? 1/2 ???>????, ??
 ??????????u ?,??

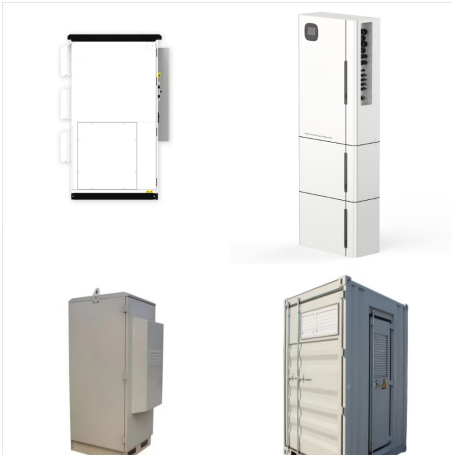


Satellitbild av sydspetsen av Heard Island. Kap
 Arkona ses p? v?nster sida av bilden, med Lied
 Glacier strax ovanf?r och Gotley Glacier strax
 nedanf?r. Big Ben Volcano och Mawson Peak ses
 l?ngst ned till h?ger p? bilden. Heard- och
 McDonald?arna, Heard and McDonald Islands, ?r
 en obebodd australisk ?grupp i s?dra Indiska
 oceanen.



?????o Heard v? qu???n ??????o McDonald (vi???t
 t???t l? HIMI [1]) l? m?>?t qu???n ??????o c???n
 c?>>?i kh?ng ngAE??>>?i ?>>? n???m ?>>? Nam
 ??????i DAE?AE?ng, kho???ng hai ph???n ba
 kho???ng c?ch t?>><< Madagascar ??????n ch?u
 Nam C?>>?c, ho???c 7718 km t?>><< ph?a nam
 Rajapur, Maharashtra.N? l? l?nh th?>>? c?>>?a ?c
 t?>><< n???m 1947, v? ch?>>? ch?>>(C)a hai n?i
 l?>>-a trong l?nh th?>>? thu?>>?c ?c

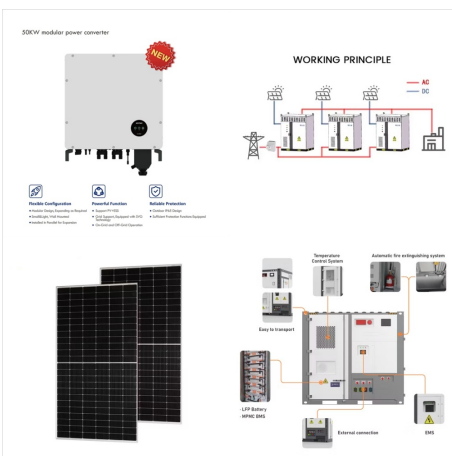
HEARD AND MCDONALD ISLANDS YOGI SOLAR



A Ilha Heard e as Ilhas McDonald (nome oficial: Territ?rio das Ilhas Heard e McDonald), [1] [2] [3] ? um territ?rio externo australiano que compreende um grupo vulc?nico de ilhas ant?rticas in?spitas e desabitadas, localizadas no oceano ?ndico, a cerca de dois ter?os do caminho de Madag?scar para a Ant?rtida. A ?rea total do grupo ? de 372 km² e tem 101,9 km de litoral.



Heard Island is 43 km long and 21 km wide. McDonald Islands are a group of uninhabited rocky islets, 40 km west of Heard Island (Encyclopaedia Britannica 2006). Heard Island has approximately 362.5 km² of area and the McDonald Island, 2.6 km². The site includes the adjacent offshore rocks and shoals and all territorial waters to a distance of 12 nautical ???



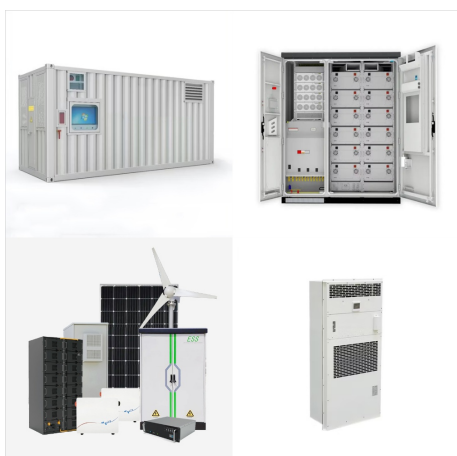
Located in the Southern Ocean, this Australian external territory comprises mainly two volcanic islands, Heard Island and the McDonald Islands, featuring stark volcanic landscapes, glaciers, and the highest mountain in Australian territory, Mawson Peak. Significance.

HEARD AND MCDONALD ISLANDS

YOGI SOLAR



Heard Island and McDonald Islands. Antarctica.
Page last updated: November 27, 2024. Photos of
Heard Island and McDonald Islands. [view 3 photos](#).
[Country Flag](#). [View Details](#). [Country Map](#). [View
Details](#). [Locator Map](#). [View Details](#). [Contents](#).
[Introduction](#). [Geography](#). [People and Society](#)



Las Islas Heard y McDonald son un conjunto de
islas deshabitadas que forman un territorio externo
de Australia desde 1947, situadas en el oc?ano
?ndico.. La isla Heard es monta?osa, dominada por
el pico Mawson, un volc?n de 2745 m de altura.
Con esta altura, el pico Mawson se erige como la
monta?a m?s alta de Australia vecina, la isla
McDonald es peque?a y rocosa.



McDonald Island is much smaller (2.5 km²), about
100 000 years old and totally ice-free, and is
predominantly composed of phonolitic rocks. 9, 10
During the campaign, signs of volcanic activity

HEARD AND MCDONALD ISLANDS

YOGI SOLAR



Heard Island and McDonald Islands Heard Island and McDonald Islands are uninhabited, barren, Subantarctic islands in the Southern Ocean, far due south of India and roughly 400 km southeast of Kerguelen of the French Southern and Antarctic Lands.



Time for sunrise, sunset, moonrise, and moonset in Territory of Heard Island and McDonald Islands ??? Heard and McDonald Islands ??? Australia. Dawn and dusk (twilight) times and Sun and Moon position. Takes into account Daylight Saving Time (DST). Solar Noon; Feb Sunrise Sunset Length Diff. Time Mil. mj; Feb 16: 5:04 am: 7:33 pm: 14:29:07



OverviewWildlifeHistoryGeographyAdministration and economySee alsoFurther readingExternal links

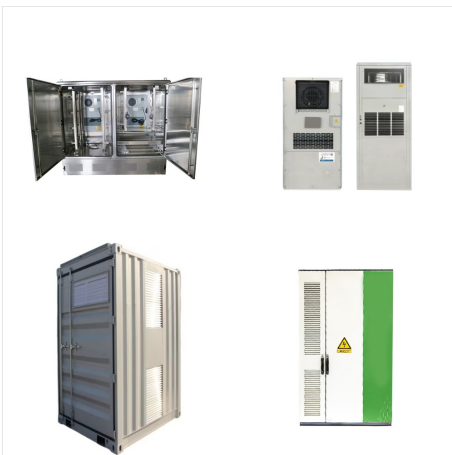
HEARD AND MCDONALD ISLANDS YOGI SOLAR



Due to the extreme isolation of Heard Island and McDonald Islands (HIMI), together with the persistently severe weather and sea conditions, human activities in the region have been, and remain, limited. Atlas Cove and other minor camps distributed across the island. Power is supplied by small diesel generators, solar cells and wind



The Territory of Heard Island and McDonald Islands (HIMI) is an Australian external territory comprising a volcanic group of mostly barren Antarctic islands, about two-thirds of the way from Madagascar to Antarctica. The group's overall size is 372 km² (144 sq mi) in area and it has 101.9 km (63 mi) of coastline. Discovered in the mid-19th century, the islands lie on ???



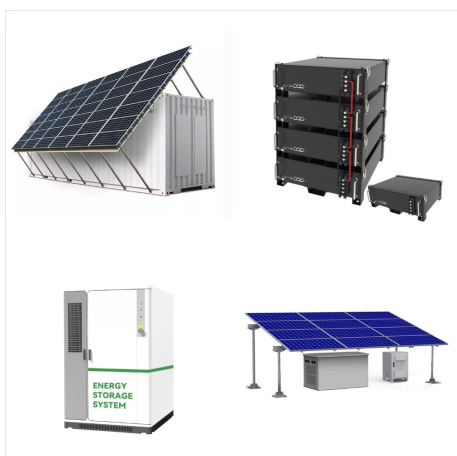
? 1/4 ?? 1/4 ? Heard Island and McDonald Islands, ?
1/4 ? HIMI ? 1/4 ?, 1947, 1997 ? 1/4 ????? 1/4
???? 1600 ? 1/4 ? 1000, 3700, ??? 80%, ???

HEARD AND MCDONALD ISLANDS

YOGI SOLAR



Heard & McDonald Islands Postcodes, ZIP Codes, Postal Codes information, The Heard & McDonald Islands is a country primarily located in Antarctica, The capital is Canberra. The numeric is 334 and dial code is +672. The postal system name in the country is Postcode, You can find out the postal code of each region from our website. We provide postal codes for 2 ???



Heard Island and McDonald Islands are located in the Southern Ocean, approximately 1,700 km from the Antarctic continent and 4,100 km south-west of Perth. As the only volcanically active subantarctic islands they "open a window into the earth", thus providing the opportunity to observe ongoing geomorphic