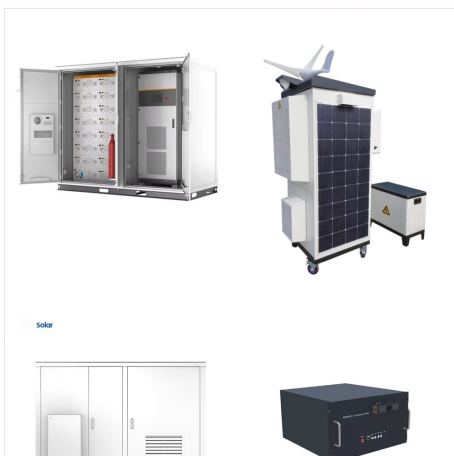




The torch power unit might include a plasma cutting circuit, paired with a compressor, a motor, and an interface with a plasma torch connection. A compressor and an environmental feedback controller are fitted to adjust ???



Heavy duty at 100 amps, 60% Duty Cycle, the Tomahawk(R) 1500 plasma cutting power source brings power and flexibility to hand-held torch cutting applications. Features Built-on a proven inverter platform, the Tomahawk 1500 is a constant current, plasma cutting power source that delivers faster cut speeds, optimal cut performance, and durability.



Buy Hypertherm plasma cutters today at Cutting Systems! Call Us: 216-928-0500. Contact Us; Support; Request A Quote. Solutions. Get a Hypertherm plasma cutter and experience the power of an elite cutting system. With the Hypertherm Powermax 125 you get heavy-duty cutting capability up to 1 1/2 " of mild steel. Whether you need flush

HEAVY DUTY POWER SYSTEMS

PLASMA CUTTER



The torch power unit might include a plasma cutting circuit, paired with a compressor, a motor, and an interface with a plasma torch connection. A compressor and an environmental feedback controller are fitted to adjust power output or compressor output. This system might help the plasma cutter to function better when affected by outside



INDUSTRIAL CUTTING. HEAVY DUTY PERFORMANCE. Powerful plasma cutters with a 100% duty cycle especially for meeting tough demands in continuous industrial operation . STRONG AND DURABLE SOLUTIONS FOR GENUINE HEAVY-DUTY TASKS: The EX-TRAFIRE(R) HD plasma cutters boast a 100% duty cycle for top-quality long cuts in thick sheet metal with plate



Some plasma cutting systems can automatically adapt to different voltages. Reviewing the plasma cutter specifications and documentation to find voltage and amperage. Regular circuit breakers are typically rated for 15 or 20 amps, insufficient for a plasma cutter. Upgrading the circuit or installing a heavy-duty breaker connected to the outlet

HEAVY DUTY POWER SYSTEMS

PLASMA CUTTER



This user-friendly and affordable plasma cutter can tackle the vast majority of projects hobbyists and small businesses will require ??? making it excellent value for money. If you're willing to spend a little more, the Lotos LTP5000D is similarly impressive and super portable, while the Hobart AirForce 12ci is a more durable and heavy-duty pick.



The PowerPlasma 102i is designed for heavy duty plasma cutting service. With up to 100 amps of cutting power, the original unit has proven its performance and reliability in industrial and fabrication settings since 2008. The newest version ???



The heavy-duty Innotec IPT100 blow back torch features a Euro, quick connect central adapter for easy connection. Priced around the price of some 40 Amp to 50 Amp plasma cutters on the market, this Everlast IGBT inverter plasma cutter clearly doesn't go slack on performance. This unit is featured standard with 1 phase 240-Volt input.

HEAVY DUTY POWER SYSTEMS PLASMA CUTTER



HEAVY DUTY PERFORMANCE. The plasma cutting systems in the EX-TRAFIRE(R) HD range are the best solution for meeting tough industrial demands. They impress users with their powerful performance, cost-effectiveness and versatility. The mobile plasma cutting systems in the EX-TRAFIRE(R) HD range set new standards in terms of performance



HoneybeeCNC Heavy Duty Gantry Plasma Cutting Machine which controlled by digital program. Except the high automation, it has the advantages of high precision, efficiency and material utilization. With the development of machinery and electronics and computer technology, CNC cutters are more and more attended by enterprise due to good man-machine interface ???



The Mega Hornet 1000 CNC plasma cutting machine sets a new higher standard for accuracy, power and reliability in a heavy duty plasma cutter. The Mega Hornet 1000 CNC plasma cutting machine has an enormous frame and massive servo drives to deliver decades of reliable service to shipyards, service centers and manufacturers.

HEAVY DUTY POWER SYSTEMS

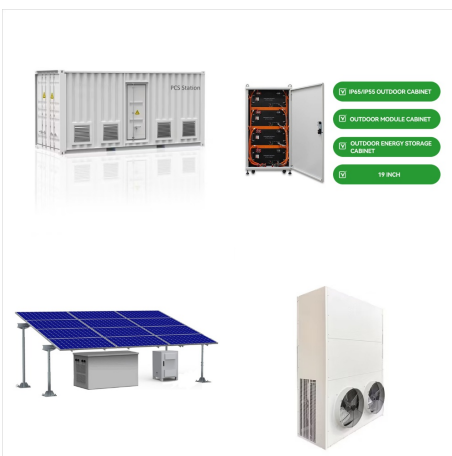
PLASMA CUTTER



K5000xmc Plasma Cutting System. Plasma & Oxy Fuel Cutting Bevel & Multi Torch Cutting Drilling, Milling & More. Our top-of-the-line K5000xmc is a heavy-duty combination plasma cutting, oxy-fuel cutting, and milling machine that will give your business a competitive edge. With multiple functions in a single machine, there's no need for complex



CNC & hand held plasma cutters to cut through metal with ease. Top brands incl. Hypertherm, view current stock! GEKA CNC Plasma Cutting System, GCS-P3015 with Powermax 125 Westermans buy the widest range of used medium to heavy duty industrial welding and fabrication equipment from around the world.



Some heavy-duty cutters are 240-volt three-phase machines, but most of the smaller ones run off single-phase power points of 110/120 volts, 220/240 volts, or both. Industrial workshops are typically the only place you'd need a three-phase plasma cutter, but for single-phase machines, it's useful to have the capacity for both 110/120 and 220

HEAVY DUTY POWER SYSTEMS

PLASMA CUTTER



Heavy duty at 100 amps, 60% Duty Cycle, the Tomahawk(R) 1500 plasma cutting power source brings power and flexibility to hand-held torch cutting applications. Features Built-on a proven inverter platform, the Tomahawk 1500 is a constant ???



The heavy-duty Innotec IPT100 blow back torch features a Euro, quick connect central adapter for easy connection. Priced around the price of some 40 Amp to 50 Amp plasma cutters on the market, this Everlast IGBT inverter plasma cutter clearly doesn't go slack on performance. This unit is featured standard with 1 phase 240-Volt input.



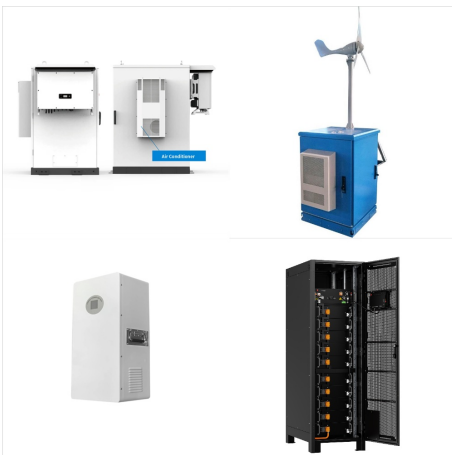
Using the latest precision drive systems, it delivers high-speed, high-accuracy, heavy-duty plasma cutting. As with all of our machines, the dura-kut is highly customizable. AKS Cutting Systems is the only company that provides the full suite of Hypertherm SureCut technology options. SureCut maximizes performance by providing embedded

HEAVY DUTY POWER SYSTEMS

PLASMA CUTTER



Every industrial company reaching out for growth eventually would need a heavy-duty plasma cutting system. Among other equipment, for a medium-duty cutting system to work properly, a cutting table, a power source, and a CNC are ???



The Vicon Monarch CNC plasma cutting machine is an extremely rigid, accurate and versatile system. The dual precision worm gear drives with digital motors produce precise movement of the all aluminum tubular gantry. This, coupled with its sharp crisp motion, produces the most accurate parts that a plasma system can possibly provide.



Suitable for heavy-duty cutting; Comes with various torch styles; Cons. Consult with your electrician to ensure that your power infrastructure will be sufficient to support a plasma cutter. Power output determines the unit's input power. ???

HEAVY DUTY POWER SYSTEMS

PLASMA CUTTER



The Powermax30 (R) XP is a highly portable plasma cutter designed to handle a wide range of jobs. A unique "two-in-one" design provides high-power capability for thick metal cutting, as well as FineCut (R) consumables for detailed, thin metal cutting. In addition to cutting any electrically conductive metal, such as mild steel, stainless steel, or aluminum, this 30-amp plasma cutter ???



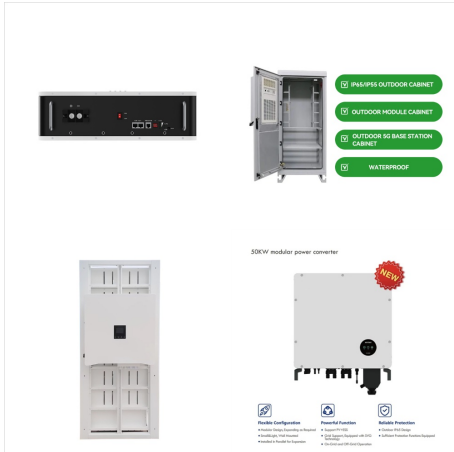
Heavy duty at 100 amps, 60% Duty Cycle, the Tomahawk(R) 1500 plasma cutting power source brings power and flexibility to hand-held torch cutting applications. Built-on a proven inverter platform, the Tomahawk 1500 is a constant current, plasma cutting power source that delivers faster cut speeds, optimal cut performance, and durability.



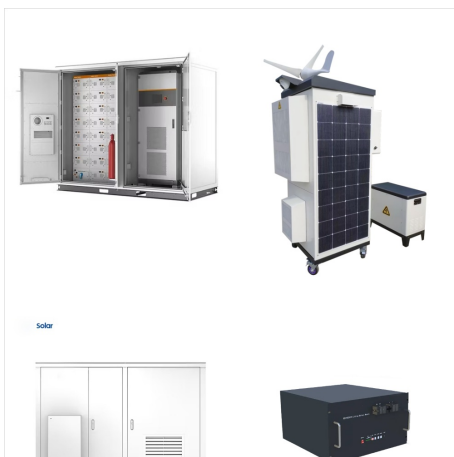
Arclight Dynamics partners with Hypertherm to offer the MAXPRO200 Plasma System for the Arc Max Unlimited series CNC Plasma Tables. The MAXPRO200(R) LongLife(R) plasma cutting system is engineered for heavy-duty, high capacity automated and handheld cutting and gouging applications. The easy-to-use system operates with either air, oxygen, or nitrogen plasma gas, ???

HEAVY DUTY POWER SYSTEMS

PLASMA CUTTER



The heavy-duty Innotec IPT100 blow back torch features a Euro, quick connect central adapter for easy connection. Priced around the price of some 40 Amp to 50 Amp plasma cutters on the market, this Everlast IGBT inverter plasma ???



The PowerPlasma 100 is designed for heavy-duty plasma cutting service. With up to 100 Amp of cutting power, the unit has proven its performance and reliability in industrial and fabrication settings since 2008. The IGBT inverter design is reliably engineered to provide Heavy-duty service with a 60% duty cycle at maximum amps.



Hypertherm MAXPRO200 heavy-duty industrial plasma cutters with 2" cut capacity, 100% duty cycle and optional serial port for CNC use. Ships free to lower 48. Hypertherm MAXPRO200 Plasma Cutter, Power Supply Only (200/208V 3PH) #078610. Free Shipping Compare. \$16,720.00. \$17,600.00.