

Where is Mitsubishi Hitachi located?

Mitsubishi Hitachi Power Systems Americas, Inc. is headquartered in Lake Mary, FL. MHPSA is a subsidiary of Mitsubishi Hitachi Power Systems, Ltd. (MHPS) in Japan, and provides a wide variety of products and services for the electric power generation industry including gas, steam, and geothermal turbines, boiler, and environmental control systems.

Who is Hitachi energy?

Hitachi Energy is a global technology leader that is advancing a sustainable energy future for all. We are advancing the world's energy system to be more sustainable, flexible, and secure, and we collaborate with customers and partners to enable a sustainable energy future - for today's generations and those to come.

Who is Hitachi energy's grid automation business unit?

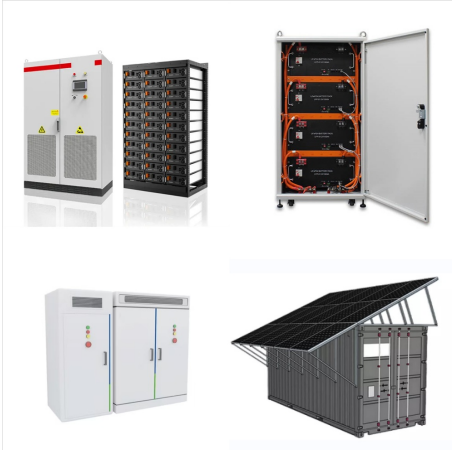
Hitachi Energy's Grid Automation business unit supports 50% of the top 250 global electric utilities. Our Grid Automation hardware, software and services portfolio unites deep domain knowledge and innovative technologies that enable customers across the globe to optimize the critical systems that power, move and connect us.

Who is the CEO of Mitsubishi Hitachi Power Systems Canada?

John Vanderhoef is the CEO of Mitsubishi Hitachi Power Systems Canada. He will report to Dave Walsh and serve as an MHPSA officer as Executive Vice President. Mitsubishi Hitachi Power Systems Canada, Ltd. is headquartered in Saskatoon, Saskatchewan, Canada.

What services does Hitachi energy offer?

We offer Power Consulting for key segments in the energy system, such as renewables, transmission distribution and as well as e-transportation solutions. Hitachi Energy is a leader in high-voltage technology, offering a wide range of high-voltage products up to 1,200-kilovolt (kV) for AC and 1,100-kilovolt for DC.



US Customs records available for Hitachi Power Systems America, Ltd. in Basking Ridge. See their past imports from Mitsubishi Heavy Industries, Ltd. based in Japan. Follow future activity from Hitachi Power Systems America, Ltd..



Hitachi Power Systems America, Ltd., a wholly owned subsidiary of Hitachi America, Ltd., headquartered in Basking Ridge, New Jersey, is a leading supplier of equipment and services for the power generation market including thermal, nuclear and hydroelectric facilities. Products include advanced pulverized coal boilers, heat recovery steam



Hitachi Power Systems America will design, engineer, and supply catalyst for the SCR's at 9 of AEP's coal-fired electric generating stations, totaling more than 13,000 MW of generation, starting with deliveries in 2014 through 2017. This agreement represents a 2nd extension of the original catalyst blanket contract that began more than 8 years



Products similar to Mitsubishi Hitachi Power Systems Americas, Inc. Master Flow(R) Wind Turbine ??? Galvanized, Externally Braced 12" ??? GC12E GAF Residential Roofing Products. CAD BIM SPECS SPECWIZARDS LEED PRODUCTS DATASHEETS Rated 5 based on 1 product reviews Master Flow(R) Wind



Cable Accessories Capacitors and Filters Communication Networks Cooling Systems Disconnectors Energy Storage Flexible AC Transmission Systems (FACTS) Generator Circuit-breakers Instrument Transformers Insulation and components Power Conversion Semiconductors Substation Hitachi Energy 2030 Plan. Advancing a sustainable energy ???



The main overseas subsidiaries of Hitachi's thermal power business are Hitachi Power Europe GmbH (HPE) and Hitachi Power Systems America, Ltd. (HPSA). (b) CCS An abbreviation of "carbon capture and storage," CCS is the technology for separating and capturing CO<sub>2</sub> from sources such as thermal power



It will include the operations formerly known as Mitsubishi Power Systems Americas, Inc headquartered in Lake Mary, Florida; Hitachi Power Systems America, Ltd which will be renamed Mitsubishi Hitachi Power Systems America ??? Energy and Environment Ltd located in Basking Ridge, New Jersey; Mechanical Dynamics & Analysis, Ltd based in Latham



In Japan, Mitsubishi Hitachi Power Systems, Ltd. ("MHPS"), a thermal power generation systems company jointly established by Mitsubishi Heavy Industries, Ltd. ("MHI") and Hitachi, Ltd. ("Hitachi"), announced its launch and commencement of business operations on Hitachi Power Systems America, Ltd. which will be renamed Mitsubishi Hitachi

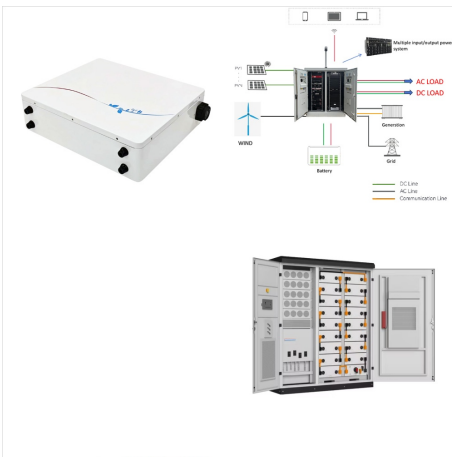


58 Group Companies of Mitsubishi Hitachi Power Systems to Be Launched -- 9 Companies in Japan and 49 Companies in Other Countries -- Tokyo, January 28, 2014 Mitsubishi Heavy Industries, Ltd. (-- TSE:7011/"MHI") Mitsubishi Hitachi Power Systems America ??? Energy and Environment, Ltd. Hitachi Power Systems America, Ltd. U.S.A. Mitsubishi





Hitachi Energy's Grid Automation business unit supports 50% of the top 250 global electric utilities. Our Grid Automation hardware, software and services portfolio unites deep domain knowledge and innovative technologies that enable customers across the globe to optimize the critical systems that power, move and connect us.



Founded in 2014, Mitsubishi Hitachi Power Systems is a developer of digital power plants, providing control optimizing power plant performance and improving reliability. Mitsubishi Hitachi Power Systems is located in Florida. Read more. ???



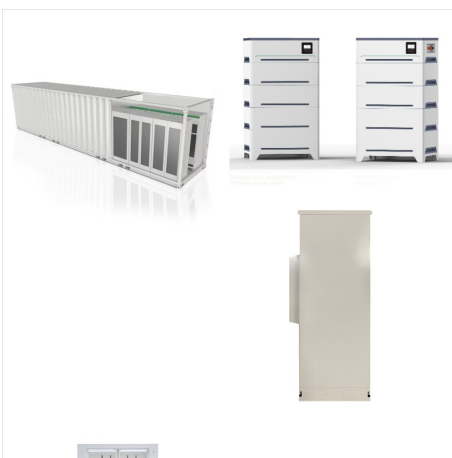
With over 2,800 employees in North, Central and South America, Mitsubishi Power is leading the transformation in power generation and energy storage. From the world's most reliable advanced-class gas turbines to artificial intelligence systems for autonomous power plants and integrated energy storage solutions ??? we are at the forefront of



Established Babcock-Hitachi Europe GmbH (Now Hitachi Power Europe GmbH) Established Hitachi Power Africa Pty. Ltd. Acquired Donges Formed nuclear power business alliance and JVs with GE Acquired Mechanical Dynamics & Analysis Ltd. 2004 Established Hitachi Power Systems America, Ltd. 2003 1,000 0 260% 566.7 845.7 865.8 1,000



HitachiPowerEurope Hitachi,Ltd. Hitachi Power Systems America, Ltd. Americas gp pp [Group Total: 17 companies (Japan), 23 companies (Overseas) Europe Asia Hitachi Power Europe y, GE--Hitachi Nuclear Energy LLCHitachi Nuclear Energy LLC Hitachi, Ltd. BabcockBabcock--Hitachi Hitachi KK.K..K. HitachiHitachi--GE Nuclear Energy, Ltd.GE Nuclear



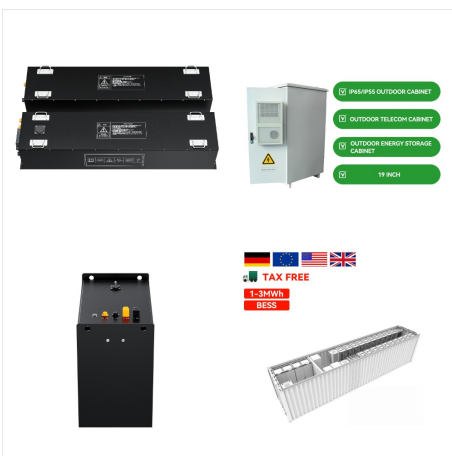
---Hitachi offers total environmental solutions---BASKING RIDGE, NJ, March 28, 2012 ??? Hitachi Power Systems America, Ltd., a wholly owned subsidiary of Hitachi America, Ltd., today announced that it has signed a license agreement with Solios Environnement Inc. to design and supply Enhanced All-Dry (EAD) Scrubber technology, jointly developed with Solios ???



Get more information for Hitachi Power Systems in Basking Ridge, NJ. See reviews, map, get the address, and find directions. Advertisement. Advertisement. Search MapQuest. Hotels Food Shopping Coffee Grocery Gas. Hitachi Power Systems. Permanently closed +1 (908) 542-9101. Website. More. Directions. Advertisement.



Hitachi Energy offers a complete range of power transformers and related components and parts. We have delivered more than 20,000 power transformers (over 2,600 GVA), including over twenty 800 kV UHVDC and over five hundred 735 - 765 kV AC units, to all major global markets.



Mitsubishi Power Completes Landmark 5,300MW Combined Cycle Power Plant Project in Thailand -- Final Eighth M701JAC Unit Begins Operation at Gulf Group and Mitsui & Co., Ltd., Joint Venture Plant -- 2024-08-26 [ Press Release ] ???



LAKE MARY, Fla., April 1, 2015 /PRNewswire/ -- Mitsubishi Hitachi Power Systems Americas, Inc. ("MHPSA"), headquartered in Lake Mary, Florida announced the formal integration of its



Hitachi Energy is a global technology leader with a combined heritage of almost 250 years, employing around 36,000 people in 90 countries. With North American headquarters in Raleigh, North Carolina, the company employs more than 4,600 in both manufacturing and office locations throughout the region, serving utility, industry and infrastructure customers across the value ???



With the merger of Hitachi and Mitsubishi Heavy Industries" power generation business in the Americas, Mitsubishi Hitachi Power Systems Americas, Inc. (MHPSA) has announced that its





Hitachi Automotive Systems Americas, Inc. is one of the leading providers of automotive systems and equipment in the American marketplace. Hitachi Automotive Systems Americas, Inc. is engaged in the design, development, manufacturing, sales and service of a wide range of automotive equipment, transportation related systems and components, as well as industrial ???