

How solar energy is used in Hong Kong?

Solar energy can be used to produce hot water or directly transform into electrical power. The systems related to solar energy application include solar thermal systems (solar water heating, solar refrigeration) and photovoltaic (PV) system. Early application of solar energy in Hong Kong is mainly used for water heating.

What are the different types of photovoltaic systems in Hong Kong?

Photovoltaic systems in Hong Kong can be classified into two main types - stand-alone systems and grid-connected systems. These can further be divided into ordinary photovoltaic systems and building-integrated photovoltaic (BIPV) systems.

What is the peak capacity of a solar system in Hong Kong?

Peak capacity of the system is around 9 kW. The PV installation in the Hong Kong Museum of Coastal Defense is grid-connected and was installed in 2008. It was made up of 60 nos. of solar panels. Peak capacity of the system is around 7.8kW. The PV installation in the Hong Kong Museum of Art is grid-connected and was installed in 2008.

How many solar panels are there in Hong Kong?

This system has a capacity of 3,050 kW, comprised over 7500 monocrystalline solar panels at mainly rooftop of over 40 buildings at the Resort. It is expected to generate over 3,300,000 kWh annually. The first wind/solar hybrid system in Hong Kong was installed at the Shek Kwu Chau Drug Rehabilitation Centre.

How many kW is a PV system in Hong Kong?

The PV Installation in the Prince Philip Dental Hospital is grid-connected and was installed in 2009. Peak capacity of the system is around 3.68 kW. Solar lamps were installed in Hong Kong Park in 2009. Building integrated PV system was installed in Hong Kong Park in 2009. The capacity of the system is 2.4kW.

Can solar farms help Hong Kong transition to a low-carbon future?

This initiative, with the full backing of the Environment and Ecology Bureau and the Environmental Protection Department (EPD), not only provides a sustainable, low-carbon energy solution but also underscores the vast potential for similar solar farms across Hong Kong, supporting the city's transition to a low-carbon future.



All astronomical information is calculated based on astronomical data provided by the HM Nautical Almanac Office, United Kingdom and the United States Naval Observatory. The default location is set to mean sea level at latitude 22.3020°, longitude 114.1743°, which is the location of the Hong Kong Observatory.



Position? 1/4 ? List Of Companies ?????? Hong Kong ?????? HK EARTH LINK CO., LTD. HK EARTH LINK CO., LTD. Business Type : Hong Kong Other Solar Products, Company Introduction. ESTABLISHED IN 2000, FOR THE ENERGY SYSTEM SUCH AS SOLAR CELL, AND FOR THE POLYSILICON CHUNK, POLYSILICON WAFER AND MONOCRYSTALLINE WAFER ETC . Contact ???



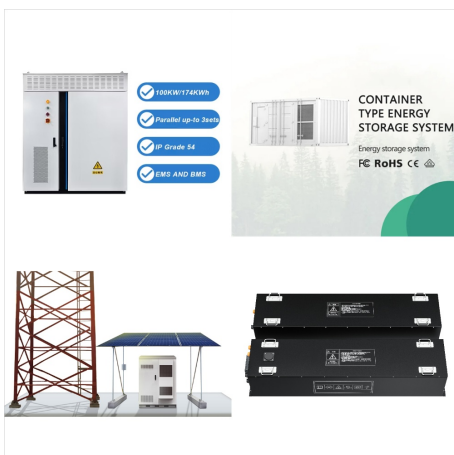
The Cross Bay Link (CBL) section of the Tseung Kwan O (TKO) project is a dual two-lane carriageway of approximately 1.11 miles (1.8 kilometers) connecting Tseung Kwan O ??? Lam Tin Tunnel (TKO???LTT) and Wan Po Road in Tseung Kwan O (TKO), one of the latest generations of new town development in Hong Kong with a population of about 400,000.



In 1991, a measuring station was set up at City Polytechnic of Hong Kong to measure hourly global and diffuse solar radiation. This paper describes the measurements made from 1991 to 1993 and some of the findings from the data observed. The frequency distribution and magnitude of the average solar radiation values are computed and examined.



In 1981, we started an environmental business in Hong Kong. Our main business is solar power generation, with customers in 36 countries around the world. We set up our own factory, according to Hong Kong's strict standard production, adequate spare parts, rapid supply, and all products with eu certification and after-sales support.



Highlights. Working Hours on Consecutive Rainy Days: 2.2 Days On-load Charge on Sunny Days: 2.9 Days ?? The data is based on TP-Link laboratory and public meteorological data obtained through model simulation. It only serves as a reference for network selection. Actual data may vary due to regional disparities, seasonal climate conditions, equipment power consumption, ???



The cheapest way to get from Hong Kong Disneyland to Solar Villas, Hong Kong costs only \$10, and the quickest way takes just 14 mins. Find the travel option that best suits you. Lantau Link Bus-Bus Interchange[[Lwb] Lantau Link Interchange. Services depart every 30 minutes, and operate every day. The journey takes approximately 7 min.



Utilizing the Perez model for solar irradiance, Hillshade analysis for shading effects, and Ladybug tools for facade obstruction simulation, we assess the PV potential and its spatial-temporal variations across 180,349 buildings in Hong Kong. The results show that Hong Kong's roofs and facades have a physical potential of 4.00×10^{13} Wh and 2.



Solar Club Letter #2 - Exploring Hong Kong Island . Solar Club Letter (NEWS) But TDU is a different kind of experience and more challenging. Hong Kong Island is an amazing playground that offers incredible diversity, and each environment received special attention to make them more fun for players.
* Discord link currently unavailable



The Link Hong Kong Open will be staged at the Hong Kong Golf Club in Fanling from 21-24 November 2024. This year also marks the 135th anniversary of the Hong Kong Golf Club and will see some of the world's leading professional golfers compete for a prize purse of US\$2million in one of Asia's oldest and most prestigious golf championships.



Highlights . Working Hours on Consecutive Rainy Days: 6.4 Days On-load Charge on Sunny Days: 2.7 Days ?? The data is based on TP-Link laboratory and public meteorological data obtained through model simulation. It only serves as a reference for network selection. Actual data may vary due to regional disparities, seasonal climate conditions, equipment power ???



1 45 min of sunlight time is based on standard environmental conditions (1000W/m², 25°C, AM1.5) and specified working scenes (up to 100 events triggered per day).Actual required time of sunlight may vary. 2 The battery is not removable. 300-day battery life is based on Tapo laboratory tests with 230s of use per day. Increased usage of 360s per day reduces battery life ???



Hong Kong Solar Energy Application Association
 Phone: +852 3487 6330 _cc78513905_bbcde-Fax:
 +852 3020 5766. Contact Us. For any enquiries or
 comments Welcome to leave a message :) Name.
 Contact Number. E-mail. Your Opinion . submit.
 Thank you for helping the planet make climate
 change!



Link: Solar PV potential in Hong Kong by location.
 Solar output per kW of installed solar PV by season
 in Hong Kong. Seasonal solar PV output for
 Latitude: 22.2842, Longitude: 114.1759 (Hong
 Kong, Hong Kong), based on our analysis of 8760
 hourly intervals of solar and meteorological data



Copy link Copy link Go to mapmaking r/mapmaking.
 r/mapmaking Test Drive Unlimited Solar Crown
 Concept Map - Hong Kong Island Map Share Sort
 by: Best. Open comment sort options. Best. Top.
 New Possible Route for "Hong ???



SOLAR LINK LIMITED was incorporated on 18-OCT-2021 as a Private company limited by shares registered in Hong Kong. The date of annual examination for this private company limited is between Oct 18 and Nov 29 upon the anniversary of incorporation. The company's status is listed as "Live" now.



Variation trends in solar radiation over the years also have implications for the long term application of solar energy resources. With an increasing trend in the mean cloud amount in the past few decades (Figure 3) and a rising trend in the number of hours of reduced visibility under 8 km (Figure 4), there is an overall decreasing trend in the total global solar radiation in Hong ???



The LINK REIT was established by the Hong Kong government, which hived off assets from the Hong Kong Housing Authority that included 151 retail facilities [3] [4] ??? mainly within public housing estates ??? and 79,000 parking spaces. The date for the listing was 25 November 2005, [5] at a valuation of HK\$22.02 billion (Valuation = $2,137,454,000 \times \text{HK\$}10.30 = \text{HK\$}22.02 \text{ Billion}$) ???



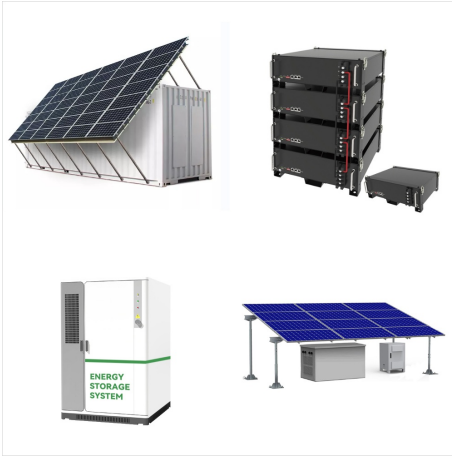
The rooftop of the village house is legally exclusive to the 2.5-meter-high solar shed, so there is no need to worry about unauthorized construction. All-inclusive prices start at \$128,000, get a free quote now!



The cheapest way to get from Solar Villas, Hong Kong to Hong Kong Disneyland Resort costs only \$10, and the quickest way takes just 14 mins. Find the travel option that best suits you. Lantau Link Bus-Bus Interchange[[Lwb] Lantau Link Interchange and arriving at [Ctb] Disneyland[[Lwb+Ctb] Disneyland Bus Terminus/



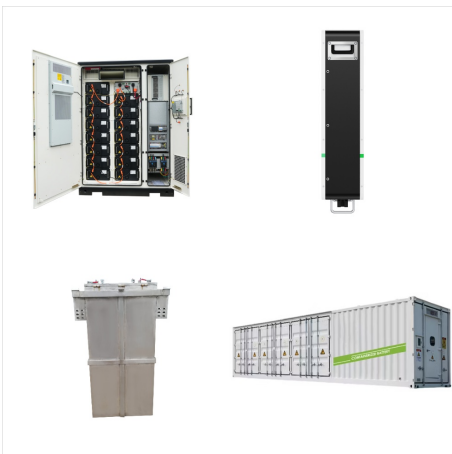
Ever since 1981, we believe that the future world will be an environmental-friendly one; therefore, we focus on research and development of renewable energy products, including recycling combination houses, wind power and solar energy. With many years"efforts of constantly enhancing our product quality and technologies, we can provide products which are selling ???



Copy link Copy link Go to mapmaking r/mapmaking.
r/mapmaking Test Drive Unlimited Solar Crown
Concept Map - Hong Kong Island Map Share Sort
by: Best. Open comment sort options. Best. Top.
New Possible Route for "Hong Kong Island Tour"
???



Commercial Solar PV Solution / , \$4 ,20331231???



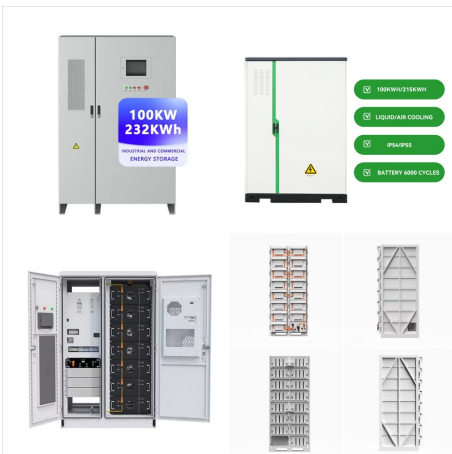
Company Development. We are the only company
in Hong Kong that has its own solar power
plant. Since 1981, we have determined that the
future world will be a green one addition to
producing and selling a wide range of renewable
energy products, we can also provide an integrated
solution to wind power for civil, commercial, public
and large-scale facilities around ???



Solar PV power generation in Hong Kong. Energy in Hong Kong refers to the type of energy and its related infrastructure used in Hong Kong. Energy is crucial for the development of trade and industries in Hong Kong with its relatively small usable land. [3] Hong Kong mostly imports its energy from outside or produces it through some intermediate process.



Highlights . Working Hours on Consecutive Rainy Days: 4.3 Days On-load Charge on Sunny Days: 1.8 Days ?? The data is based on TP-Link laboratory and public meteorological data obtained through model simulation. It only serves as a reference for network selection. Actual data may vary due to regional disparities, seasonal climate conditions, equipment power ???



The solar farm will participate in the Feed-in Tariff (FiT) Scheme of CLP Power Hong Kong Limited. At the same time, SUNeVision, a subsidiary of SHKP and Hong Kong's largest data centre provider, will purchase CLP Renewable Energy Certificates (RECs) linked to the solar power generated by the solar farm.



In other words, electricity generated from a person's own solar photovoltaic system will be purchased entirely by electric power companies until 2033. Simply put, the moment your solar system starts generating electricity, you earn profit 1). Why don't you install LG's solar panels and enjoy the benefit of Hong Kong's sunlight?