

How to choose a power station backup for a CPAP machine?

Battery life is the most important factor when considering a power station backup for a CPAP machine. The battery capacity determines how long you can run your CPAP machine uninterrupted on your given settings.

Are portable power stations good for CPAP machines?

That's where we come in. BougeRV's portable power stations offer reliable power to keep your CPAP machine in working order no matter where your travels take you. Read on to learn more about how they can help and to learn more about some of the best battery backups for CPAP machines. What Is CPAP Battery Backup?

Does a CPAP machine need a backup battery?

In the event of a power outage, a strong backup battery for your CPAP machine can mean the difference between healthy sleep and a restless, disturbance-filled night. The heavy-duty Portable Outlet UPS CPAP Battery from Sunset is durable, versatile, and equipped to keep your machine running until your power returns.

What is the best CPAP battery backup?

The Jackery Explorer 1000 v2 Portable Power Station is one of the best battery backups for CPAP machines. It can charge the CPAP machine (30W) for 30 hours, so you can get an uninterrupted power supply during the night. What is the best CPAP battery for camping?

What size CPAP battery do I need?

Below, we'll answer some of the most common questions about CPAP battery power and other alternative power sources. What Size Battery Do I Need For My CPAP? Most CPAP machines can be powered from a 12v or 24v CPAP battery pack, and require between 30-90 watts of power.

How many watts is a CPAP battery backup?

If you are using the CPAP for 8 hours, the total watt-hour consumption of CPAP machines will be 240Wh - 480Wh. Based on the type of your CPAP machine, you can easily purchase the battery backup that fits your needs and preferences. How Does Jackery Work as CPAP Battery Backup?

HOW BIG OF A BACKUP POWER STATION FOR CPAP



provides approximately 72 hours of emergency backup power to a CPAP Machine on a single charge. GEN-820 provides approximately 100 hours of emergency backup power to a CPAP Machine on a single charge. GEN-1020 provides approximately 126 hours of emergency backup power to a CPAP Machine on a single charge.



A deep-cycle battery is designed to provide continuous power over a long period of time whereas a cranking or starting battery (like you'd find in most personal vehicles) is designed to discharge a large amount of energy upfront, then be recharged by an alternator.



Appliances running time: The Jackery Explorer 500 Portable Power Station is a lightweight power solution that can keep your CPAP machine charged for long hours. It weighs only 13.32 lbs and can be an ideal power solution for outdoor adventures.

HOW BIG OF A BACKUP POWER STATION FOR CPAP



CPAP battery backup solutions can provide the machines with continuous power in a variety of situations, including off-grid living, RVing, camping, and home power outages. Jackery Explorer Portable Power Stations feature a large battery capacity, ensuring you can charge your CPAP machines for the whole night or multiple nights, depending on

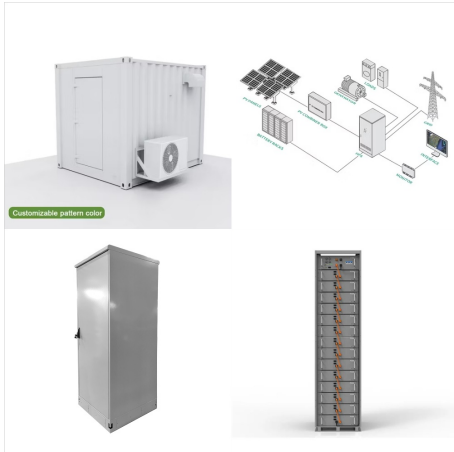


Discover the top CPAP battery backup & portable power stations with product comparisons, and a complete shopping guide to help you find your ideal backup power solution for camping, power outages, and more. How big a battery backup do I need for a CPAP? Any batter that has around 1,000 WH of power should be plenty for a CPAP machine.



Types Of CPAP Machines. While choosing the best battery backup for CPAP, it's vital to understand its type and model low we include some common types of CPAP machines available in the market. Standard CPAP ???

HOW BIG OF A BACKUP POWER STATION FOR CPAP



Use a Power Station: If you don't want to use a noisy power generator, you can go for a portable power station instead. Consumer grade power stations can be used to power multiple devices simultaneously. They feature high capacity batteries which can power your CPAP machine for more than 8 hours. A power station is an ideal power solution for



EnginStar Portable Power Station 300W 296Wh Battery Bank with 110V Pure Sine Wave AC Outlet for Outdoors Camping Hunting and Emergency, 80000mAh Backup Battery Power Supply for CPAP PRODUCT IMAGE. 5. PRODUCT NAME. Renogy 72000mAh 266Wh 12v Power Bank with 60W PD, CPAP Battery for Camping, High Capacity Large Camping ???



Larger battery packs like the Jackery 300 or Anker Powerhouse II would give you 3-5 nights of sleep with your CPAP between charging. the 300 is my favorite power station. I take it to coffee shops and keep it by my bed to charge my devices at night. this very portable CPAP battery backup is a perfect option to power your CPAP machine

HOW BIG OF A BACKUP POWER STATION FOR CPAP



Types Of CPAP Machines. While choosing the best battery backup for CPAP, it's vital to understand its type and model low we include some common types of CPAP machines available in the market.

Standard CPAP Machines: CPAP or Continuous Positive Airway Pressure is the most common machine type for PAP therapy. On average, it consumes around 30-60 ???



Yes, Jackery can power your CPAP or BiPAP machines to ensure your essentials remain powered throughout the night. The Jackery Portable Power Stations and Jackery Solar Generators can supply steady electricity to CPAP machines while RVing, camping, or outdoor music festivals. You can also use these portable power stations to charge your CPAP when ???



Discover the top CPAP battery backup & portable power stations with product comparisons, and a complete shopping guide to help you find your ideal backup power solution for camping, power outages, and more. If you sleep with a CPAP machine, you shouldn't have to worry about a trip or power outage interrupting your rest. How big a battery

HOW BIG OF A BACKUP POWER STATION FOR CPAP



ResMed Power Station II Battery Kit: that not all 12V batteries are created equally. A car battery is designed for a large discharge with immediate recharging with the vehicle's alternator, but deep-cycle batteries are designed for long, continuous output. The Best CPAP Battery and Power Backup Solutions in 2024 (For Camping, Flying



If you need to recharge the portable power station with a solar panel, you can opt for the related model's Solar Generator. The running time is calculated when the Jackery is fully charged and is used to power the CPAP separately. The running time is for reference only; the actual time may vary depending on usage.



The power station will run the CPAP for about 2 hours on the internal battery. It can run the CPAP using solar panels, but a 100W solar panel will never reach 100W output on the CPAP side. The battery will offset the rest, the CPAP will run, but only while the battery still has power (so 2h plus whatever the panels provide).

HOW BIG OF A BACKUP POWER STATION FOR CPAP



Large Uninterrupted Backup Power: If you want to go the automatic route, you can either buy a regular UPS and connect any power station to it, or use EcoFlow's smart home system to connect the Delta Pro power station to provide backup power (up to 25 kWh) to your entire home. This is a much more expensive solution, but not only completely



Explore CPAP Battery Backup and Battery Pack Solutions for Philips Respironics DreamStation machines! A larger-capacity take on the EXP48 Pro, the EXP96 Pro features a massive 307.2Wh capacity, making it the ultimate CPAP battery for camping and road trips. Unfortunately due to its large capacity, it is not FAA-compliant, so you won't be



An ultralightweight power station that includes modern connections is a rare find. Fortunately, this portable power supply device offers all that. For users searching for an ultra-handry CPAP power supply for camping, this is all they need. This 3.3lb power generator with a 178Wh power supply can run our CPAP machine, tablet, lights, and more.

HOW BIG OF A BACKUP POWER STATION FOR CPAP



Imagine you're out in the woods, camping with two more friends. Before dusktime, you managed to recharge the Infinity 1500 Portable Power Station back to 100% - a total capacity of 1512Wh. For bedtime, you'll connect one type of CPAP machine and three phone chargers (15W each).. Scenario #1 - CPAP machine (with humidifier)



For CPAP machines, power stations can range in power from 350 to 500 watts, and the heated hose and humidifier can be turned on for one to two nights. If you have to travel for a long period of time, the UPS CPAP Pack Battery can be used to power a CPAP machine for up to 14 hours while humidifying it to keep you comfortable and safe.



You can power your CPAP device with an external battery. The ResMed Power Station II (RPS II) External CPAP batteries are also great to have on hand as a CPAP battery backup in the event of a power outage. External batteries can ???

HOW BIG OF A BACKUP POWER STATION FOR CPAP



Discover the top CPAP battery backup & portable power stations with product comparisons, and a complete shopping guide to help you find your ideal backup power solution for camping, power ???



In this section, we will explore the top-rated CPAP battery backup brands and delve into customer testimonials and experiences. Top-Rated CPAP Battery Backup Brands. ResMed Power Station II: This brand is highly regarded in the CPAP community for its reliable and long-lasting battery backup solutions. The ResMed Power Station II offers an



Make sure you bring all these components. Lastly, in order to camp with a CPAP machine, you will need a cpap battery for camping. If you are not camping electricity, this is where your solar generator will come in. Make sure to bring it. 2. Charge that battery. This is incredibly important if you aim to power your CPAP machine with your solar

HOW BIG OF A BACKUP POWER STATION FOR CPAP



Some of the primary benefits of using a portable power station as a CPAP battery backup system include the following: They are light in design and portable, making them an ideal solar charging solution for those who prefer frequent traveling.



Read our guide to learn more about portable power stations for CPAP machines. We'll cover the purpose of having a portable power station for your CPAP machine, what to consider when looking for backup power for your CPAP device, and the top five choices for portable CPAP backup. Top Five Choices for Portable Backup for Your CPAP Battery. Let



Can a battery backup power a CPAP? Absolutely, a battery backup can power a CPAP! Our battery backups are perfectly capable of powering a CPAP machine, giving users peace of mind for a good night's sleep. Growatt offers three battery backup options for home use. The Infinity 1300 and Growatt Solar Generator VITA 500 are suitable for daily use