

How do standby generators work?

Standby generators keep your home running during storms and power outages. These units automatically start when the power goes out, keeping your lights on, your food fresh, and your family comfortable. Our guide explains how standby generators work to help you determine if they're the right solution for your emergency power needs.

What is a home standby generator?

All home standby solutions are designed to keep you safe, secure and comfortable in an outage. Whether from a storm, equipment failure, or any number of other causes, you suddenly find yourself without electricity. Thanks to the transfer switch technology, your backup generator can start supplying power to your home seconds after an outage begins.

How does a Generac home standby system work?

Thanks to the transfer switch technology, your backup generator can start supplying power to your home seconds after an outage begins. Whether you're home or not, your Generac home standby system kicks into action, and continues to power your home until utility power returns.

How does a ATS work in a home standby generator?

When the utility power meets acceptable standards, the ATS selects utility power. If the power quality becomes inadequate--such as a power outage--the generator controller starts the engine and gives it a few seconds to stabilize and then signals the ATS to switch the power source to the home standby generator.

What is included in a standby generator set?

The set includes the generator and the transfer switch, and any optional electrical equipment necessary, such as power management modules. The modern standby generator system is always ready to supply power during an outage to keep homes safe and businesses operating. Standby Generators restore power automatically when an outage hits.

What are the benefits of a home standby generator?

Some additional benefits provided by a standby generator are: Convenience: A home standby generator

# HOW DOES STANDBY GENERATOR WORK



provides peace of mind even when you are away from it. Power restores to the critical systems automatically such as water,A/C,fridge,or an entire home. You can watch games or work on your PC continuously without any inconvenience.



The transfer process generally takes a few seconds after the generator starts. How Does a Standby Generator Work? Connected directly to the facility's electrical panel, standby generators are powered via an external supply of fuels like natural gas or diesel. The fuel type and generator size decide what to power and for how long.



How Does It Work? A standby generator serves as a backup electrical system that operates automatically. Within seconds of power loss, controls tell your generator to start. It powers on within seconds, and takes on your electrical load. When your utility power returns, the system switches off safely to prevent harmful power surges.

# HOW DOES STANDBY GENERATOR WORK



But do you know how they work? Don't worry, most people have no idea, which is why the experts at Cannondale Generators have decided to share their knowledge. Here is how a standby generator works, step by step: 1. Your standby generator continuously monitors incoming voltage from the utility line. 2.



Standby Generators. Moving up the scale, standby generators come into play. These are the heavy lifters of the backup power world. Standby generators are permanently installed on your property, fueled by natural gas, and automatically kick in when the primary power source fails.. Whole-house standby generators can power your entire home, ensuring that ???

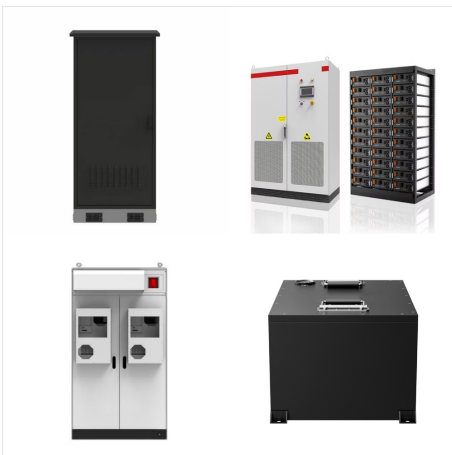


How Does an Automatic Transfer Switch Work?  
When a power outage occurs, an automatic transfer switch detects the power interruption and promptly activates your home standby generator. This action takes seconds and will allow your home's lights, appliances, and other essential devices to operate normally.

# HOW DOES STANDBY GENERATOR WORK



In today's guide, we are talking about how does a standby generator work and why do you need a standby generator for your home. Let's start! Ever been left in the dark during a power outage and wished for a backup? A standby generator could be your solution. These devices kick in when the power goes out, providing a steady supply of



A home standby generator system consists of two primary components: the standby generator unit and an automatic transfer switch. When an outage occurs, the generator is up to speed and generating electricity within seconds.



Emergency backup and standby generators are essential for ensuring uninterrupted power during outages. A power generator, such as a diesel or natural gas generator, is a reliable lifeline in critical situations.

# HOW DOES STANDBY GENERATOR WORK



A standby generator is designed to provide power when there is a disruption to the mains power supply. How does a standby generator work? A diesel standby generator uses diesel as its fuel source. Diesel burns at a much higher temperature making it ???



How Does A Permanent Generac Generator Work? Like other generators, a Generac generator can run on liquid propane, or tap right into your home's natural gas lines. It sits outside, just like your air conditioning unit, and waits??? and when the power goes out, your Generac knows it and turns on. A permanent standby generator has many



How Does a Generator Work? An electric generator works by converting mechanical energy into electrical energy. It operates based on the electromagnetic induction principle, which is the creation of an electric current by moving a wire next to a magnet. Scientist Michael Faraday discovered this phenomenon in 1831 when, after moving a magnet



# HOW DOES STANDBY GENERATOR WORK



So, How Does a Standby Generator Work Specifically? When the power goes out, the generator's automatic transfer switch (ATS) detects the problem and tells the generator to start up. The ATS disconnects your home or business from the main power supply and connects it to the generator instead. The generator then starts up and adjusts its output



Standby generators can be set up to run indefinitely on natural gas or can be fueled by propane. There's no need to connect cables, flip a switch, or start the engine. Cons: With few exceptions, standby generators are more expensive than other types of generators.

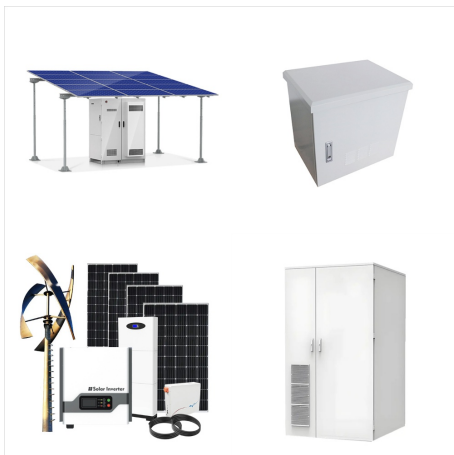


How Do Standby Generators Work? Commercial standby generators are directly connected to your facility's electrical panel and are powered by using an external fuel supply such as diesel or natural gas. In regards to commercial generators, the size of the generator,

# HOW DOES STANDBY GENERATOR WORK



Generators can run on liquid propane (LP) or can use your home's natural gas lines. Like your AC unit, the standby generator sits right outside your home and waits for the signal to kick into gear. Unlike a portable generator, a backup generator starts automatically. So in the event that the power goes out, all you have to do is sit back, relax



You might be pondering, "How does a standby generator work? What makes it so reliable?" Well, it's not magic, but it sure feels like it when you need it most. Standby generators are usually connected to your home's electrical system. They're always on standby, waiting patiently for the moment you lose power.



How Generators Actually Work in Your Home. A home generator is also called a standby or backup generator. It gets hooked up to your home and provides a source of power when your house's electricity goes out. In fact, the only time you'll use one of these generators is during power outages.

# HOW DOES STANDBY GENERATOR WORK



How Does A Standby Generator Work? A standby generator works in a few simple steps: Power Monitoring: It has a sensor that keeps track of your home's power supply. Automatic Start: When the sensor detects the power is out, it starts the generator. Electricity Production: The generator then produces and sends electricity to your home. This process ensures you have ???



Generator Monitors ComEd into Generator Load Center Power ??? in "Standby" Mode. During normal operation, the generator is in standby mode and is constantly monitoring the flow of utility power (from ComEd) supplying the electricity to your critical circuits. A power Outage is Identified and the Generator Starts



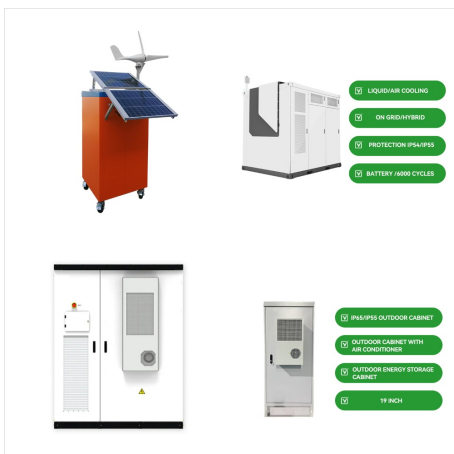
Posted in Generators and tagged how does a generator work for a house, how does a generator work to power a house, how does a generator work when the power goes out, how does a standby generator work, how does a whole-house generator work, types of generators, what is a generator used for



# HOW DOES STANDBY GENERATOR WORK



Understanding the Basics of Generators How Does a Generator Work? At its core, a generator converts mechanical energy into electrical energy. This process is based on the principle of electromagnetic induction, discovered by Michael Faraday in 1831. Standby generators can run for longer periods but still require regular breaks for



A common question that is often asked about generators is how do home generators work? The basic function seems simple at first glance. Fill the fuel tank or connect the generator directly to the natural gas line to the home, then turn it on to generate electricity. Standby generators are designed for long-term use in poor weather. These



Learning the basics of how these systems function can be helpful when considering installing one or troubleshooting your standby generator repair needs. Let's go over some important things to know about these generators. Powers Essentials. Standby home generators typically power your home's most essential devices during an outage.

# HOW DOES STANDBY GENERATOR WORK



Most people already know what standby generators do, but here's more information on how they work.

How Does a Standby Generator Operate? A

standby generator is an automated power system that's installed outside of a home and connected to a source of fuel. These systems run on either liquid petroleum or natural gas.