



How long does a lithium battery last?

Factors that contribute to battery degradation include temperature, humidity, and the number of charging cycles. Lithium batteries typically have a shelf life of 2-3 years, after which their capacity may start to degrade. Is it better to store lithium batteries fully charged or partially charged?

How do you store a lithium ion battery?

**Charge Level Management** For optimal storage, lithium-ion batteries should be stored at a partial charge level, ideally around 40% to 60%. Storing a battery that is fully charged or completely discharged can cause stress to the battery's cells, leading to reduced performance and lifespan.

How to prolong the shelf life of lithium ion batteries?

There are several strategies that manufacturers, distributors, and consumers can follow to prolong the shelf life of lithium-ion batteries: Lithium batteries should be stored in cool environments, ideally between 15°C and 25°C (59°F to 77°F), and avoid high temperatures. Store at a partial charge.

What temperature should a lithium battery be stored?

The ideal temperature range for lithium batteries is typically between 20°C and 25°C (68°F and 77°F). Avoid storing them in areas where the temperature can drop below freezing point. 5. Use Proper Packaging: If you're storing loose lithium batteries, place them in a secure and non-conductive container or individual battery storage cases.

What voltage should a lithium battery be stored at?

**Voltage:** Storing lithium batteries at high voltage can cause capacity loss and degradation over time. It is recommended to store them at a voltage level between 3.6V and 3.8V per cell. **State of charge:** As mentioned earlier, storing lithium batteries at a partial charge is ideal for long-term storage.

How do you store a lithium battery in winter?

Follow guidelines for cleaning, disconnecting, and choosing the right storage location to safeguard your batteries. Monitoring and maintenance during winter storage are crucial for preserving lithium batteries. Regular inspection, temperature monitoring, and maintenance charging help ensure optimal battery health and

# HOW LONG CAN LITHIUM ION BATTERIES BE STORED



performance.



storage of lithium-ion batteries. Store your battery in a cool, dry place, keep it charged at least 30% and maintain a suitable temperature between 20 to 35 degrees Celsius. You can also use a battery storage case or bag to help keep ???



Lithium Ion batteries are recommended to be stored at around half charge since long term storage at a full or low charge can cause damage. But how long can one safely be stored at 100%? Does degradation occur over months?



Rechargeable lithium-ion batteries, such as the 18650 battery, boast remarkable service life when stored at 3.7V???up to 10 years with nominal loss in capacity. A precise 40???50 percent SoC level for storage should not be a priority, but a more accurate reading is obtainable by resting the battery 90 minutes before taking the reading.

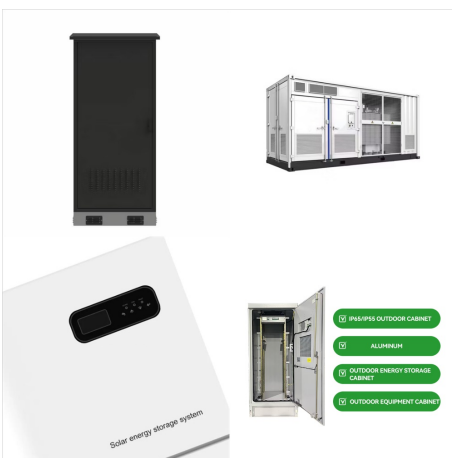
# HOW LONG CAN LITHIUM ION BATTERIES BE STORED



Lithium-ion batteries are vital for powering many modern technologies. To ensure their effective use and optimal performance, it is essential to understand their lifespan, which can be divided into three key categories: cycle life, calendar life, and battery shelf life. These parameters influence the battery's reliability, efficiency, and application suitability.



For long-term storage, always store them with a charge level between 40% and 80%. Can I store lithium-ion batteries fully charged for an extended period? It is recommended that lithium-ion batteries be stored at between 40% and 80% charge for optimal lifespan. Storing them fully charged or fully depleted can lead to degradation over time.



They're best stored in cool, dry places and have a low risk of fire, but store the batteries away from heat sources. Lithium-Ion batteries: Most e-bikes now use lithium-ion batteries, like those powering your laptop and smartphone. These batteries have a long lifecycle of thousands of rides, and a high-quality one should last more than five

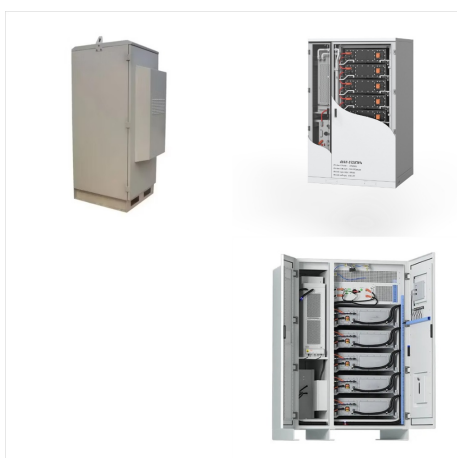
# HOW LONG CAN LITHIUM ION BATTERIES BE STORED



Best working temperatures are between 15°C and 35°C. Proper lithium-ion batteries storage is critical for maintaining an optimum battery performance and reducing the risk of fire and/or explosion. Many recent accidents regarding lithium-ion battery fires have been connected to inadequate storage area or conditions.



What are the storage requirements when not using Li-ion batteries? It is best to store Li-ion batteries at room temperature. There is no need to place them in the refrigerator. Avoid long periods of extreme cold or hot temperatures (e.g., dashboard of car in direct sunlight). Long periods of exposure to these temperatures can result in battery



Lithium batteries come in various forms, including Lithium-Ion (Li-Ion) and Lithium Polymer (LiPo) batteries. Li-Ion batteries are commonly used in smartphones, laptops, and other consumer electronics, while LiPo batteries are often found in drones, remote-controlled vehicles, and power banks. To prepare a lithium battery for long-term



# HOW LONG CAN LITHIUM ION BATTERIES BE STORED



storage of lithium-ion batteries. Store your battery in a cool, dry place, keep it charged at least 30% and maintain a suitable temperature between 20 to 35 degrees Celsius. You can also use a battery storage case or bag to help keep it insulated. So, there you have it: everything you need to know about lithium battery storage.



Best Practices for Storing Lithium Batteries; How Long Can You Store a Fully Charged Lithium Battery? such as lithium-ion or lithium polymer batteries, may have different storage capabilities. Generally speaking, however, most fully charged lithium batteries can be safely stored for several months without experiencing significant loss of



Storing lithium-ion batteries like the Milwaukee batteries is part of its maintenance. This keeps the electrons inside the battery in a stable condition which prolongs the battery's life. The ideal charge for Milwaukee lithium-ion battery storage is 40-60%. This effectively establishes an electron equilibrium between the positive and

# HOW LONG CAN LITHIUM ION BATTERIES BE STORED



Make sure there is no food or water than could spill on the batteries. As long as all this is good, then the closet may be the best place for battery storage, particularly in the wintertime. -ion batteries are solid parts of any tool or gadget, but they need to be stored in the right area. In general, you can store lithium-ion batteries in



How long you can store lithium-ion batteries depends largely on the conditions of storage. Compared to nickel-cadmium batteries, for example, whose self-discharge rate of 10 to 15 per cent is much higher than that of lithium-ion batteries, Li-ion batteries are relatively easy to care for and can be stored for a long time.



Lithium-ion batteries should be stored in a cool, dry place with low humidity and out of direct sunlight. This guide teaches how to store lithium batteries, maintenance tips, and more. How long can a lithium battery sit unused? A lithium battery can remain unused for up to 6 months. If your battery has been unused for several months, check

# HOW LONG CAN LITHIUM ION BATTERIES BE STORED



Tips for Lithium-ion Battery Storage: Temperature and Charge Temperature is vital for understanding how to store lithium batteries. The recommended storage temperature for most is 59° F (15° C)???but that's not the case across the board. So, before storing lithium batteries, thoroughly read labels on proper storage for your specific battery

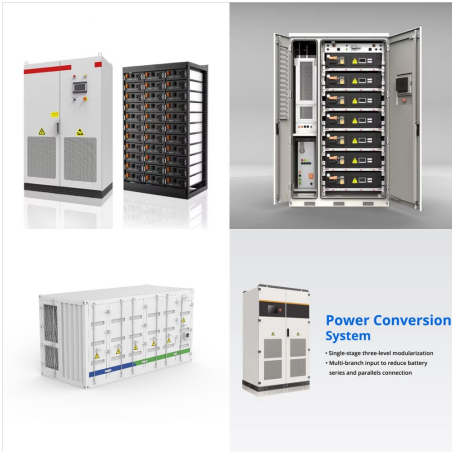


When you plan to store your battery pack for a long time, be sure to charge the battery to around 60 ??? 80 percent capacity. Again, your batteries will self-discharge over time, so keeping a written record of when you put them in storage or most recently charged them can benefit you in the long run.



Frequently Asked Questions about Storing LiFePO4 Batteries  
4.1 Should LiFePO4 Batteries be Disconnected from the System when Not in Use?  
4.2 Do I Need to Fully Charge a LiFePO4 Battery Before Storage?  
4.3 How Long Can a LiFePO4 Battery Last in Storage?  
Part 5. Conclusion Part 1.  
Why Proper Storage of Lithium-ion and LiFePO4 Batteries is Essential?

# HOW LONG CAN LITHIUM ION BATTERIES BE STORED



The best way to store lithium batteries is in a controlled environment. Keep batteries in a cool place, ideally between 20°C to 25°C (68°F to 77°F). Never store batteries in freezing ???



Lithium batteries should be stored in cool environments, ideally between 15°C and 25°C (59°F to 77°F), and avoid high temperatures. Charge to an Optimal State. Store at a ???



Do not attempt to modify lithium-ion batteries. Modifying lithium-ion batteries can destabilize them and increase the risk of overheating, fire and explosion. Read and follow any other guidelines provided by the manufacturer. Storage. Store lithium-ion batteries with about a 50% charge when not in use for long periods of time.



# HOW LONG CAN LITHIUM ION BATTERIES BE STORED



What are key characteristics of battery storage systems?), and each battery has unique advantages and disadvantages. The current market for grid-scale battery storage in the United States and globally is dominated by lithium-ion chemistries (Figure 1). Due to technological innovations and improved manufacturing capacity, lithium-ion



The state of charge is a often-overlooked yet critical factor in lithium battery storage, especially for long-term storage. Unlike some other battery types, lithium-ion batteries should neither be stored fully charged nor completely discharged. The ideal charge level for storing lithium batteries is around 40-50% of their capacity.



Proper storage of lithium-ion batteries is essential to maximize their performance and shelf life. Some of the best ways to store lithium-ion batteries for energy storage are as follows: Temperature: Store lithium-ion batteries in a cool, dry place with a temperature range between 0°C and 25°C (32°F and 77°F).

# HOW LONG CAN LITHIUM ION BATTERIES BE STORED



Never Let Li-Ion Batteries Get above 140F. Li-ion batteries can EXPLODE or CATCH FIRE if stored in high temperatures. That means they should never be left in your car on hot days, nor in places like your garage. Check Date When Buying Li-Ion Batteries. Even when stored properly, li-ion batteries only have a shelf life of around 2-3 years.



1) How to Store Lithium RV Batteries for Winter 1.1) Charge the Battery 1.1.1) Never Charge Below 32°F / 0°C 1.1.2) Warm the Battery Before Charging 1.2) Disable the Heating Function 1.3) Disconnect From Any Load 1.4) Turn Off/Disable Charging 1.5) Store in a Dry, Temperate Location 1.6) Periodically Check the Battery State of Charge 2) Are Lithium RV ???



The intent of this guideline is to provide users of lithium-ion (Li-ion) and lithium polymer (LiPo) cells and battery packs with enough information to safely handle them under normal and emergency conditions.

# HOW LONG CAN LITHIUM ION BATTERIES BE STORED



## Short-Term vs. Long-Term Battery Storage.

Sometimes, you may just need to store batteries for a short term in your store's supply area, while other times, you may have a surplus of batteries you need to keep in a larger warehouse. Lithium-ion batteries can be stored with ongoing maintenance, like recharging, for three to five years. Still



During long-term storage, lithium-ion batteries should be recharged every 3 to 6 months to maintain their health. Aim to keep the charge level around 40% to 60%, as this helps prevent capacity loss and prolongs battery life. What are the risks of storing lithium batteries at high temperatures?



Lithium-ion batteries should not be charged or stored at high levels above 80%, as this can accelerate capacity loss. Charging to around 80% or slightly less is recommended for daily ???