



The 12V Lamp dimmer circuit is a simple electronic circuit that helps to control the light intensity i.e. the brightness of a 12V bulb. It uses a variable resistor for its control with a transistor. These two components are the only elements that complete this circuit. This circuit is commonly practiced on switchboards placed at homes, offices

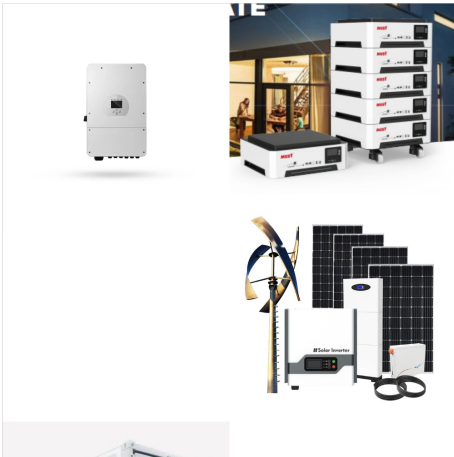


If you have multiple LED lights connected to a single circuit, you may encounter issues if the circuit is overloaded. 12v LED lights have specific ampere requirements, and exceeding the maximum load can cause the lights to dim or ???



The primary advantage of LED lighting is its low power consumption. LEDs typically require 75% less energy than traditional incandescent bulbs while delivering the same light output; an LED produces around 80-100 lumens per watt, whereas traditional incandescent bulbs may only produce 15 lumens per watt a campervan, where every watt counts due to limited battery ???

HOW MAKE A 12V LED LIGHT CIRCUIT WITH PHOTOVOLTAIC SWITCH



So in this project, we are going to build a simple Police LED light Flasher Circuit Using 12V SPDT Relay. The heart of this circuit is a 12V SPDT relay. The Relay consists of a coil, 1 common terminal, 1 normally closed terminal, and one normally open terminal. Infrared Remote Control Switch Using CD4027 IC; Light Detector Circuit using



LED Lights: 5 x 12V LED Light Strips; LED Type: SMD 5050 Power Source: 12V Battery; Additional Components: Inline Fuse, Switch, Resistor; Component Connection; LED Light Strips: Positive Wire to Positive Terminal of Battery Remember to always follow proper safety precautions and consult the manufacturer's instructions for your



We will go through how to wire a circuit of two lights with Wago connectors. When wiring the circuit, you'll need to follow these steps: 1. To start, you will need a battery, 2 lights, 2 x 3 way Wago connectors and 2 x 2 way Wago connectors and the appropriate cables for the lighting circuit. 2.

HOW MAKE A 12V LED LIGHT CIRCUIT WITH PHOTOVOLTAIC SWITCH



12v led
??(C)???(R)???. 1/4
???(R)?? 1/4
1/2
1/4



Shed 12v Solar Lighting System: This is my first
instructable covering a project I completed earlier
this year. I have a shed which I use as a workshop
as well as somewhere where I can train on



The automatic solar power led light is a perfect
solution for any outdoor lighting application, from
parking lots to street lights. Outdoor lighting is
typically only needed during the night, which leaves
the daytime for obtaining

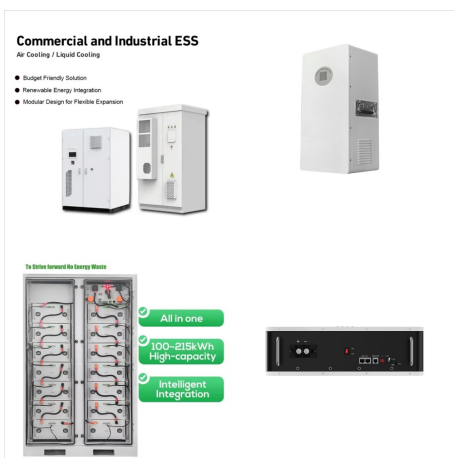
HOW MAKE A 12V LED LIGHT CIRCUIT WITH PHOTOVOLTAIC SWITCH



Here we have compiled a list of 18 easy processes on how to make budget-friendly DIY Solar Light Circuits. 1. Solar Garden Light Circuit w/ Automatic Cut Off. This basic circuit uses LEDs, a solar panel and a ???

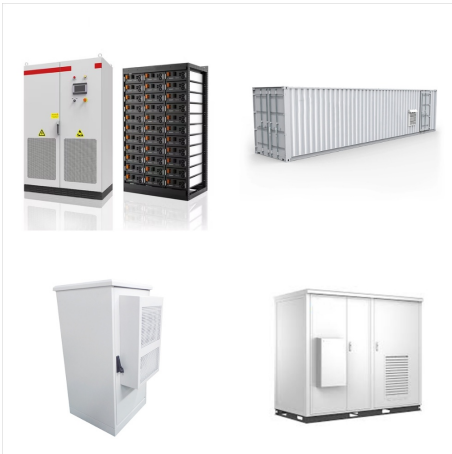


Solar Panel: 100w Polycrystalline PV Panel - ?70.00. Battery: 12v 35Ah Leisure Battery - ?50.00. LED Strip: 5m 12v 5050 LED Strip - ?12. Switch: 2 Gang Outdoor Switch - ?7.00. Fuse Box: 4-Way Automotive Fuse Box - ?6.00. Battery Lead: Ring Terminals, inline fuse and "Anderson" connector - ?5.00. Terminal Block: 4-Row Terminal Strip - ?5.50

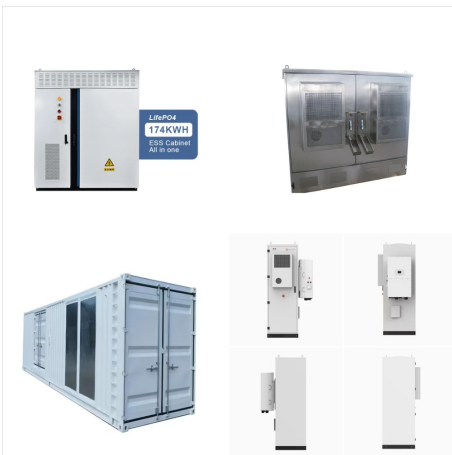


7) Automatic 40 Watt LED Solar Street Light Circuit. The 7th concept below discusses the construction of an interesting 40 watt automatic LED street light circuit, that will automatically switch ON at night, and switch OFF during day time (designed by me). During day time the in-built battery is charged through a solar panel, once charged the

HOW MAKE A 12V LED LIGHT CIRCUIT WITH PHOTOVOLTAIC SWITCH



How Much Power Do Camper Van 12V Lights Use? Each 12V LED puck light consumes approximately 3 watts of power (~0.25Ah). So, if six of your puck lights are currently on, you would use 18W of power (~1.5Ah). LED puck lights are some of the most power-efficient lights available for camper vans. Are LED Lights Better for an RV? Yes, we think so!

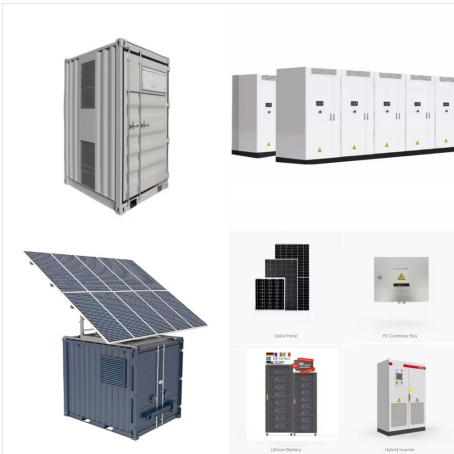


Simple 12V Solar Lights Circuit. We will start with the simplest circuit ideas for an LED circuit and a solar charger circuit. Simplest LED circuit. First, we use a 12V 2.5Ah battery and a 12V 2W LED. The LED consumes ???



SMPS 50 watt LED Street Light Driver Circuit. 12V, 24V, 1 Amp MOSFET SMPS Circuit. 5V, 12V Buck Converter Circuit SMPS 220V. Cheapest SMPS Circuit Using MJE13005. Simple 12V, 1A SMPS Circuit. Capacitive LED Driver. A capacitive LED driver can be built through a capacitive power supply, which is also popularly known as transformerless power supply.

HOW MAKE A 12V LED LIGHT CIRCUIT WITH PHOTOVOLTAIC SWITCH



The 4 simple light activated day night switch circuits explained here can all be used for controlling a load, normally a 220V lamp, in response to the varying levels of the surrounding ambient light. $R11 = 12V$, SPDT, $D1 = 1N4007$, $N1\text{---}N6 = IC\ 4049$ a phototransistor is employed, so that when the daylight is void, the LED gets switched



When you combine the LED driver circuit without the charge indicating LED and the dark detecting circuit; the ultra-bright LED will come on when the solar cell is not charging the circuit. Now when light is on the solar cell it powers the base of Q1 closing Q1 and reducing the voltage to the base of Q2 to near zero volts opening Q2 and turning



So load light (power LED light/ inverter) comes on, provided switch S1 or S2 is on. IRF640 can handle a maximum current of approximately 18A, but you can limit its application to approximately 8A-9A only, based on which the heat-sink is attached to the MOSFET. Fig. 2: Circuit diagram of the dusk-dawn controller Construction and testing

HOW MAKE A 12V LED LIGHT CIRCUIT WITH PHOTOVOLTAIC SWITCH



The solar garden light circuit will consist of two parts. One is charging and the other one is to control the LEDs. The complete circuit diagram is explained as two parts, the first part is given below N-Channel MOSFET Q2, IRF540N is used for charge controlling operation.



1. 12v
2. 12v
3. (pv)
4. 12v
5.
6.

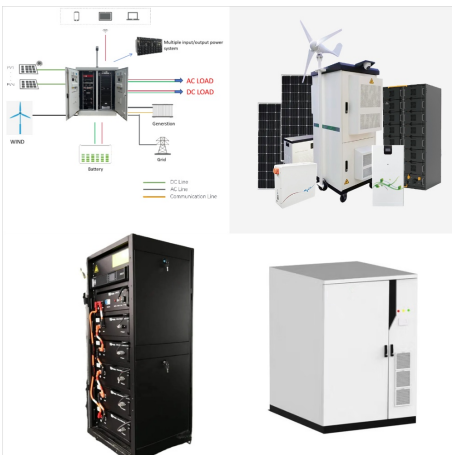


The most common type of photovoltaic light sensor is the Solar Cell. Solar cells convert light energy directly into DC electrical energy in the form of a voltage or current to a power a resistive load such as a light, battery or motor. Then photovoltaic cells are similar in many ways to a battery because they supply DC power.

HOW MAKE A 12V LED LIGHT CIRCUIT WITH PHOTOVOLTAIC SWITCH



How to Wire 12V Camper Lights to a Battery.
Although it is, indeed, possible to wire the lights directly to the positive and negative battery terminals, installing a complete electrical system into a DIY camper is going to involve moving the branch circuits (Lights, fans, USB outlets, etc) away from the battery bank. To do this, I recommend using a power ???



You will need just a solar panel panel, a selector switch and some diodes for getting a reasonably effective solar charger set up. The inductor for the pocket solar LED light circuit consists of a small ferrite ring transformer having 20:20 turns which could be appropriately altered and optimized for enabling the most favorable voltage for



Automatic LED 12V Solar Light Circuit 2. The simple outdoor Solar Lights Circuit (version 1) works quite well. It provides light for about 5 hours from 6:00 p.m. to 10:00 p.m., but it cannot remain on for longer than that. So, we ???

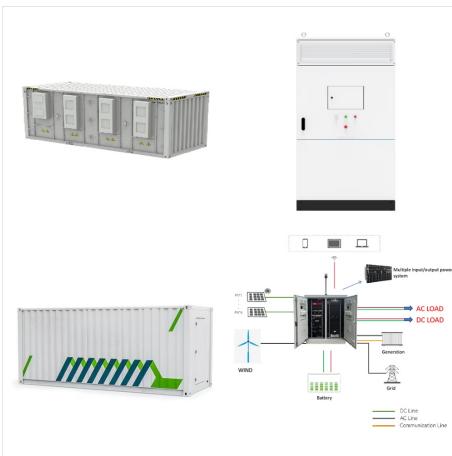
HOW MAKE A 12V LED LIGHT CIRCUIT WITH PHOTOVOLTAIC SWITCH



????????????????????????????????????(C)
 ?????????????????????????(C) ?????????????(C) led 12v
 ???? ?????????????- ?????????????????????????????????
 ?????????????????????????????????
 ?????????????????????????(C) ?????????????????????????
 ?(R)?????(C) ???(R)?????(C). ?????????????????????
 ?????????????????????(C): 1. ???u?????- led 12
 ?????????? 2. ??????-?(C) ?????????????????????(C) 3.



Because of some houses are not a convenient plug.
 So the charging system with a solar cell. Moderately
 convenient to use. At night, the LED lights up and
 LED daytime off. With electricity from solar cells
 charged a 12-volts battery. Are you ready? Let's get
 starts. ???



I have a 12 volt illuminated rocker/toggle switch that
 I'm trying to hook up to a 12 volt dome light.
 Actually, it is hooked up and the dome light is
 working- what I can't seem to find an answer to is:
 how to make the light illuminate inside the switch.
 The switch is a standard one with 3 terminals to
 connect to Power, Load and Earth/Ground.

HOW MAKE A 12V LED LIGHT CIRCUIT WITH PHOTOVOLTAIC SWITCH



This is simplest automatic solar night light circuit that my son try to make it for basic small solar charger. to use AA NI-MH battery source and lighting with 2 white LEDs. White Super bright LED Solar cell 3V to 6V 200mA B1: 1.2V AA batteries 1,500mAh and Collector Of Q2. Assume $V_{led} = 2\text{ v}$ and $I_{led} = 10\text{ ma}$. Now We can Calculate The



Light Fixture: Choose a suitable 12V LED light fixture, considering both its brightness and how well it fits into your shed's look. Wires And Connectors: Wires help transfer electricity from one component to another ???



The 1K pot (Potentiometer) is used to increase the charging current for the 12V battery and 50K (VR) variable resistor is used to adjust the amount of light / dark on which you want to switch on and off the LEDs. For 12V battery you can use any 12V lead acid battery of 4.5AH (amphour) or 7AH (amphour).

HOW MAKE A 12V LED LIGHT CIRCUIT WITH PHOTOVOLTAIC SWITCH



The automatic solar power led light is a perfect solution for any outdoor lighting application, from parking lots to street lights. Outdoor lighting is typically only needed during the night, which leaves the daytime for obtaining solar energy that can then be converted to electrical power and used in powering our light sources overnight.