



How many times can a lithium ion battery be recharged?

On the other hand, lithium-ion batteries are known as rechargeable lithium batteries, which means you can recharge them as many times as you want, considering your requirements. You can also call them secondary cell batteries. When you recharge a lithium-ion battery, lithium ions move from the cathode to the anode.

How long does a rechargeable lithium battery last?

The lifespan of your rechargeable lithium battery is measured with cycles. One cycle is equal to the time a battery takes to fully charge and discharge. According to the current market standards, lithium-ion batteries are developed to last for 300 to 500 cycles. After this many cycles, the performance of a battery drops below 80%.

Do you need to recharge a lithium ion battery?

In the case of traditional batteries, you need to recharge them throughout the storage time, but this is not the case with lithium ion or rechargeable lithium batteries. They perform extremely well at 40% to 50% depth of discharge. Once your lithium-ion battery is charged and discharged 30 times, let it discharge completely before you recharge it.

When should lithium ion batteries be charged?

Lithium-ion batteries should not be charged or stored at high levels above 80%, as this can accelerate capacity loss. Charging to around 80% or slightly less is recommended for daily use. Charging to full is acceptable for immediate high-capacity requirements, but regular full charging should be avoided.

Can You charge all lithium batteries?

The answer is a big No. You can't charge all lithium batteries. Let's understand this concept by identifying the difference between lithium and lithium-ion batteries. Lithium batteries can't be recharged, and they are known as primary batteries.

Do rechargeable batteries contain lithium ions?

The rechargeable batteries in today's smartphones, tablets, laptops, and other devices all use a technology called lithium-ion. As you might expect, they contain...lithium ions. As Popular Science explained in our look at

# HOW MANY TIMES CAN LITHIUM ION BATTERY BE RECHARGED



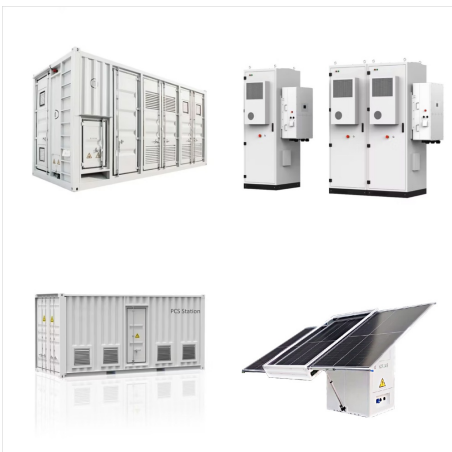
Tesla's Powerwall battery:



Enabling these modes can help you get the most out of the battery, especially during times when you can't recharge the device. Battery-saver modes limit background processes, reduce screen brightness, and adjust performance settings to conserve energy. Lithium-ion battery care doesn't have to be complicated. With these dos and don'ts

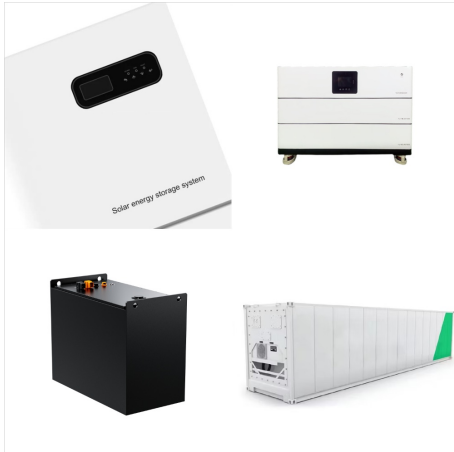


This happens to any rechargeable battery such as an 18650, 21700, 26650, 14500, AA, AAA or even a car battery. They can only be recharged a limited number of times. You want to select rechargeable batteries that can be recharged many times. We specifically recommend 18650's because they have the ability to be recharged 300 to as many as 2000



Referring to Table 2 Assuming a 10% DoD gives you 1 unit of use and you can recharge it 4700 times you've gotten 4700 units of use out of the battery. Now if you have a 25% DoD you get 2.5 units of use per recharge. You can recharge it 2500 times you've now gotten 6250 units of use from the battery.

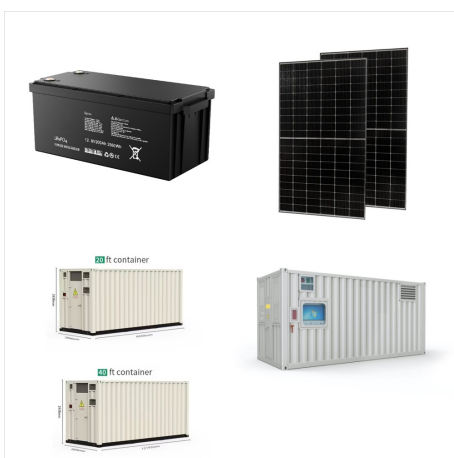
# HOW MANY TIMES CAN LITHIUM ION BATTERY BE RECHARGED



With the first commercial lithium-ion battery entering the market in 1991, the (nearly) 30 years since have seen rapid development. It can also tell you how many times the battery gets topped



Recycled battery innovation comes to Energizer Recharge (R) batteries; Can be charged up to 1,000 times; Innovative construction gives you more charges vs. Energizer Recharge (R) Power Plus batteries, plus they hold their charge for up to 1 year in storage; Charge lasts up to 12 months when not in use; World's #1 recharge brand, according to



The type of material does affect how many times you can recharge the battery before it stops holding a full charge. NiMH Batteries. Higher-capacity models with a 2100 to 2400mAh rating can be recharged 600 to 800 times. Lithium-ion Batteries. Lithium-ion batteries are often used in lawn equipment, electric bikes, and other items that need a

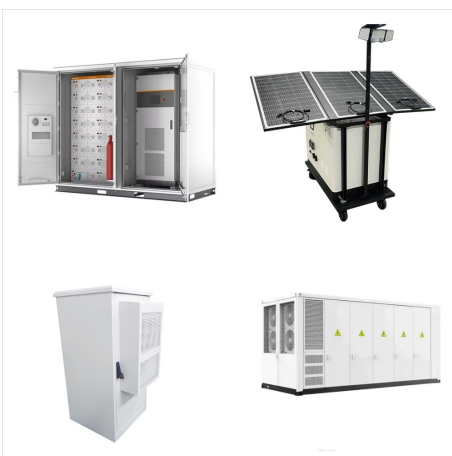
# HOW MANY TIMES CAN LITHIUM ION BATTERY BE RECHARGED



Studies have shown that a lithium-ion battery regularly discharged to 50% before recharging will have a longer lifespan and may retain up to 1,500-2,500 cycles, compared to just 500-1,000 processes if regularly fully discharged.



Lithium-ion (Li-ion) batteries typically offer around 300-500 charging cycles before their capacity starts to degrade noticeably. Lithium polymer (LiPo) batteries can generally handle 400-600 ???



How many times can Oregon 40V batteries be recharged? All Oregon 40 Volt Battery Packs are designed with premium lithium ion cell technology. Depending on battery pack use and care, Oregon Battery Packs will generally last between 500 and 1,000 full charge/discharge cycles.



# HOW MANY TIMES CAN LITHIUM ION BATTERY BE RECHARGED



Lithium Ion Battery Charging Time Calculator  
Battery Capacity (mAh): Charging Current (mA):  
Calculate Did you know the global lithium-ion battery market will hit \$116 billion by 2030? This shows how vital it is to know how to charge lithium-ion batteries right. when to recharge lithium batteries: Recharge when the battery is 20-30% full to



The charging time for a lithium battery varies based on the type of battery, its battery capacity, and the type of charger in use, but generally, charging a lithium battery can take anywhere between 1-4 hours. It is generally safe to leave a lithium-ion battery on the charger overnight, as they are designed to be left plugged in. However

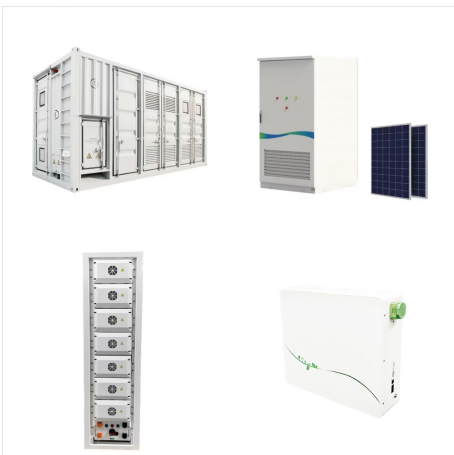


Battery Chemistry: Different types of rechargeable batteries, such as lithium-ion, nickel-metal hydride (NiMH), or lead-acid, have different charge cycle capacities. Lithium-ion batteries, commonly used in modern electronic devices, generally offer a higher number of charge cycles compared to other chemistries.

# HOW MANY TIMES CAN LITHIUM ION BATTERY BE RECHARGED



How Many Times Can You Recharge a Lithium-ion Battery? Lithium-ion batteries can typically be recharged between 300 to 1,500 times before their capacity significantly diminishes. The average lifespan of these batteries is around 500 charge cycles. A charge cycle refers to the process of charging a battery from 0% to 100%, although partial



Rechargeable batteries can be recharged and reused from 500 to 1000 times depending on usage. The different battery technologies affect the performance of the batteries. There are 3 main types of rechargeable batteries: NiCd (Nickel-Cadmium) NiMH (Nickel-Metal Hydride) Li ???



If you have a lithium-ion battery, it's important to store it properly so that it will last as long as possible. Here are some tips for storing your battery in the garage: 1. Lithium batteries will self-discharge over time, so it is important to recharge them before they are completely dead. This will help prolong their life and keep them

# HOW MANY TIMES CAN LITHIUM ION BATTERY BE RECHARGED



Rechargeable batteries can typically be recharged between 300 to 1,000 times depending on the type of battery and usage conditions. Lithium-ion batteries often last 500 to 1,500 cycles, while nickel-metal hydride (NiMH) batteries usually offer around 300 to 500 cycles. Proper maintenance and charging practices can significantly extend their lifespan.



How Many Times Can You Charge a Lithium-Ion Battery on Average? Lithium-ion batteries can typically be charged 300 to 500 times before their capacity significantly diminishes. On average, this translates to about two to three years of usage for most personal electronics. The lifespan and rechargeability depend on multiple factors.



You can recharge a lithium-ion battery about 300-500 times. This is the average number of charge cycles it can take before it starts deteriorating in holding capacity and other aspects. However, some lithium-ion batteries used in electric vehicles and other applications support higher charge cycles.

# HOW MANY TIMES CAN LITHIUM ION BATTERY BE RECHARGED



In simpler words, as the battery is advised to be recharged after consuming 80% of power then it means that you can charge and discharge the battery power 625 times or if you charge and consume 100% power of the battery (which is not advisable) then you can use the battery for 500 times. Lithium-ion battery fast charging



In addition, we cover how the rate of discharge effects of lithium vs. lead-acid batteries. We often get asked if our lithium batteries can be charged with an alternator. In short, yes, they can be, but it is important to make sure you have a quality alternator for the best results. In this video, we'll provide all the details you need to know.



The method you choose can impact charge times and the battery's lifespan. Read on to find out how the different lithium-ion charging methods work. 1. AC Power (Household Electricity) Luckily, most devices that rely on lithium-ion batteries can recharge using multiple methods. Some methods ??? such as household AC power ??? require on-grid



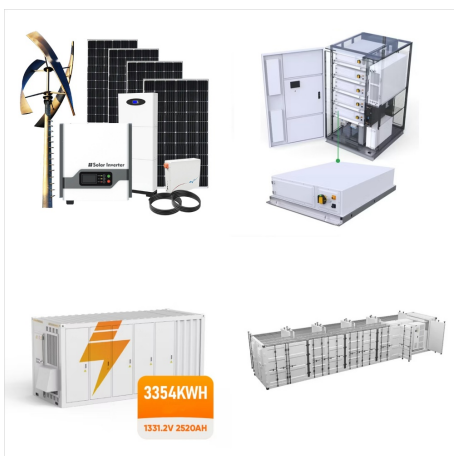
# HOW MANY TIMES CAN LITHIUM ION BATTERY BE RECHARGED



Is it OK for the device to remain in such state for a long time (and recharge again only . Skip to main content. Stack Exchange Network. Stack Exchange network consists of 183 Q& A communities including Stack Overflow, lithium-ion; low-battery; Share. Cite. Follow edited Apr 13, 2015 at 3:30. Dwayne Reid. 24.1k 2 2



Even so, many laptop manufacturers caution against leaving the computer plugged in after it has completed charging. Using "fast chargers" is convenient but will degrade a lithium-ion battery more quickly than standard charging. Discharging a battery too quickly also leads to battery degradation, through many of the same mechanisms.



To reduce strain, maintain the lithium-ion battery on the peak cut-off as brief as you can. As soon as the charge is ended, the battery voltage starts to decline. This assists in easing the voltage stress. With time, the open circuit voltage will ???

# HOW MANY TIMES CAN LITHIUM ION BATTERY BE RECHARGED



You could have a laptop, PDA, MP3 or even a cell-phone, all of which more likely than not has a lithium ion or a lithium polymer chemical based battery system. If so then one question that you will have eventually is how many times will I be able to charge the battery before it is effectively dead? Is it 300 times, 400 times, or 500 times?