

Should I charge my Nikon camera with a non-compatible Charger?

It's best to use the original charger that came with your camera to avoid any compatibility issues. Plugging in your Nikon camera to a non-compatible charger may not only damage your camera or the battery, but it can also put your safety at risk. How to tell if you have the right charger?

What if my Nikon camera battery charger is lost or broken?

If your Nikon camera battery charger is lost or broken, you can still charge your battery without it. All you need is a mini USB cable and a computer or laptop with a working USB port. Simply connect the mini USB cable to your camera and then to the USB port on your computer or laptop.

How do I know if my camera battery is charged?

To identify your battery, check the label on the back of the battery and also insert it into the camera and check the: Setup menu > Battery Info. Introduced in 2020. Can be charged when inserted into Z 8, Z f, Z6III, Z 6II, Z 7II, Z 6, Z 7, Z 5 & D780 battery chamber via USB connection or use the MH-25a or MH-34 battery charger.

Can You charge a Li-ion battery with a power bank?

Certain newer Nikon Rechargeable Li-ion batteries can also be charged in-camera while connected to a power bank. They are the EN-EL25, EN-EL15c and EN-EL15b batteries. The EN-EL25 Li-ion battery that's used for the Z 30 is compatible with the Anker PowerCore III Elite 25600 87 power bank using a USB Type C to USB Type C cable.

How do you charge a battery with an AC wall adapter?

AC wall adapter: After inserting the AC wall adapter into the charger AC inlet (q), slide the AC wall adapter latch as shown (w) and rotate the adapter 90° to fix it in place (e). Insert the battery and plug the charger in. An exhausted battery will fully charge in about 2 hours and 35 minutes.

How do I install a battery charger?

Depending on the country or region, the charger comes with either an AC wall adapter or a power cable. AC wall adapter: After inserting the AC wall adapter into the charger AC inlet (q), slide the AC wall adapter latch

HOW TO CHARGE A NIKON LITHIUM BATTERY



as shown (w) and rotate the adapter 90 °; to fix it in place (e). Insert the battery and plug the charger in.



The EN-EL15c is a Rechargeable Lithium-ion battery for use with select Nikon cameras. It can be charged using either the MH-25a battery charger or the EH-7P charging AC adapter when used with Nikon cameras that have the capability to charge batteries in-camera. EN-EL15c Rechargeable Li-ion Battery



The lamp turns off when charging is complete. A battery will fully charge in about 2 hours (when using the EN-EL25a) or 1 hour and 40 minutes (when using the EN-EL25) (for an exhausted battery). When charging is complete, disconnect the USB cable. Be sure to keep the connectors straight when disconnecting them.



When inserted in the camera, EN-EL15c/EN-EL15b rechargeable Li-ion batteries will charge while the camera is connected to an optional EH-7P charging AC adapter (the EH-7P cannot be used to charge EN-EL15a and EN-EL15 batteries; use the supplied MH-25a battery charger instead). An exhausted battery will fully charge in about two hours and 35

HOW TO CHARGE A NIKON LITHIUM BATTERY



Here are some of the best battery chargers for Nikon cameras. Nikon Battery Charger This charger works really well for my Nikon battery .Great charger for Nikon batteries Charger worked as advertised on my Nikon camera battery. Keep your camera batteries charged up with the Digipower TC-55N camera battery charger.



1. Understanding Your Nikon Coolpix Battery:
Before delving into the charging process, it's crucial to understand the type of battery your Nikon Coolpix camera uses. Nikon Coolpix cameras typically utilize lithium-ion (Li-ion) batteries, known for their lightweight, high energy density, and long lifespan. Identifying the specific battery model compatible with your ???



The battery will charge while the camera is off. Keep the plug straight during insertion and removal. The camera charge lamp (w) lights amber while charging is in progress. The lamp turns off when charging is complete. Assuming a 5 ???

HOW TO CHARGE A NIKON LITHIUM BATTERY



EN-EL9 Rechargeable Li-ion Battery can be recharged with the MH-23 Quick Charger. These rechargeable batteries provide extended life and consistent power, even in colder conditions. Nikon Global (View in a new window) Cameras. Cameras ???



The Nikon D500 uses the EN-EL15a battery, a high-capacity lithium-ion battery designed for high-performance shooting. This battery is capable of powering your camera for extended periods, but it's essential to know how to charge it properly to maintain its lifespan and performance. Charging Methods: Your Options for Recharging. You have two



The EN-EL15c is a Rechargeable Lithium-ion battery for use with select Nikon cameras. It can be charged using either the MH-25a battery charger or the EH-7P charging AC adapter when used with Nikon cameras that have the capability to charge batteries in-camera.

HOW TO CHARGE A NIKON LITHIUM BATTERY



5. Wait for the battery to charge. The charging process will take several hours, and the amount of time it takes to charge will depend on how much power the battery has lost.. Once the battery is fully charged, you can remove it from the charger and put it back in the camera. The charge should last for several hours of continuous use, depending on how many pictures you ???



The Nikon D1X utilizes the EN-EL4a battery, a powerful lithium-ion battery designed to provide extended shooting time. Understanding the battery's characteristics and proper charging practices is crucial for maximizing its lifespan and ensuring optimal performance.



Charging starts when the camera is connected to an electrical outlet while the battery is inserted, as shown in the illustration. The power-on lamp slowly flashes green while the battery is charging. When charging is complete, the power-on lamp turns off. Unplug the Charging AC Adapter from the electrical outlet, and disconnect the USB cable.

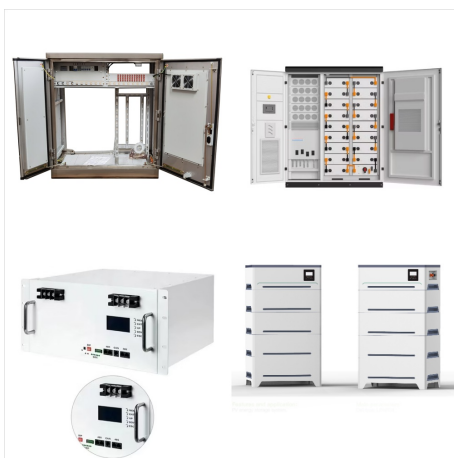
HOW TO CHARGE A NIKON LITHIUM BATTERY



A Nikon camera battery is a rechargeable lithium-ion external battery pack. The battery is positioned in an external charger, attached to a power source for charging. Once completely charged, the battery pack is put in the battery compartment in the camera, confirming that the connectors on the battery are facing the correct way.



Charging a lithium battery pack may seem straightforward initially, but it's all in the details. Incorrect charging methods can lead to reduced battery capacity, degraded performance, and even safety hazards such as overheating or swelling. By employing the correct charging techniques for particular battery chemistry and type, users can

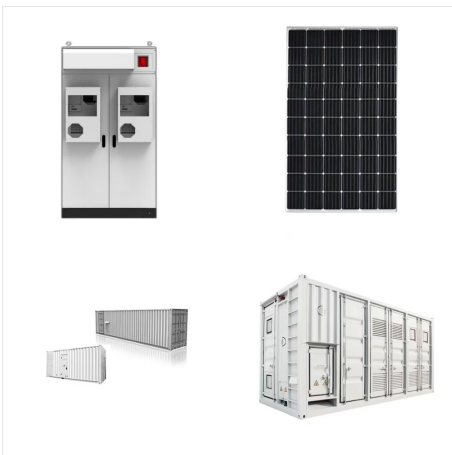


Most Nikon cameras use lithium-ion batteries, which means that you can charge them with a standard li-ion battery charger. To charge a Nikon battery, first, make sure that the charger is compatible with your camera ???

HOW TO CHARGE A NIKON LITHIUM BATTERY



Use the MH-25 or MH-25a battery charger. Not supported with the following Nikon products: Z 8; Z f; Z6III; EN-EL15 (Li-ion01) Introduced in 2011. Can be identified with product name EN-EL15 with A-L as the 9th digit in the ???

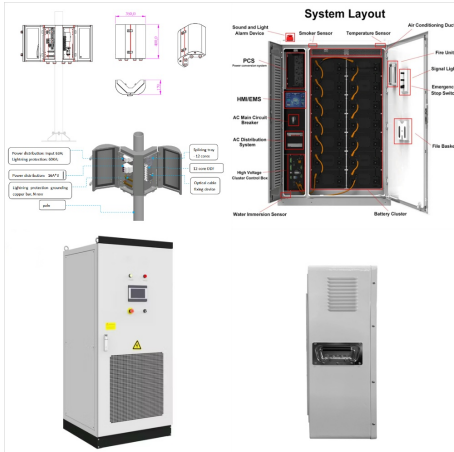


Nikon EN-EL14 Rechargeable Li-Ion Battery for Nikon D3100 DSLR, D3200 DSLR, D5100 DSLR, Coolpix P7700 and Coolpix P7000 Digital Cameras. The Nikon EN-EL14 is commonly used for Back-up, Digital photography, Photography, Portrait photography, Travel and more. The Nikon EN-EL14 is most used by customers who consider themselves to be a Casual photographer, ???



Step-by-Step Guide: Charging Your Nikon Coolpix S3000. Follow these simple steps to charge your Nikon Coolpix S3000 battery: 1. Connect the USB Charging Cable: Attach one end of the USB charging cable to the USB port on your camera. 2. Connect to Power Source: Connect the other end of the USB cable to the USB power adapter or a computer's USB

HOW TO CHARGE A NIKON LITHIUM BATTERY



EN-EL15a or EN-EL15 batteries cannot be charged using a charging AC adapter. Use an MH-25a battery charger instead. If [Enable] is selected for [USB power delivery] in the setup menu, the charging AC adapter can be used to power the camera. The batteries will not charge while the camera is powered by an outside source.



How To Charge Nikon D3000. Charging your Nikon D3000 is a fairly simple process. Here are the steps to follow: 1. Remove the battery from the camera. To do this, open the compartment door on the bottom of the camera. The battery should be clearly visible. 2. Plug the battery charger into a power source. You can use a wall outlet or a computer



Charging a lithium battery pack may seem straightforward initially, but it's all in the details. Incorrect charging methods can lead to reduced battery capacity, degraded performance, and even safety hazards such as ???

HOW TO CHARGE A NIKON LITHIUM BATTERY



Model number of Nikon D3500 battery charger: MH-24; Model number of Nikon D3500 battery: EN-EL14a; How to Charge Nikon D3500 Batteries. On many digital cameras, you can charge the battery while it's still in the camera. You just connect the camera to a power source with the USB cable. It's a lithium-ion battery pack rated at 7.2 V



Q: How long does it take to charge a Nikon Coolpix battery? A: The charging time varies depending on the battery type and model. It typically takes 2-3 hours to fully charge a Nikon Coolpix battery. Q: Can I use a different charger for my Nikon Coolpix battery? A: It's not recommended to use a charger that isn't specifically designed for



How long does it take to charge a lithium battery. The time it takes to charge a lithium battery depends on several factors, including the power output of the charger and the capacity of the battery. Generally, charging a lithium battery can take anywhere between 1-4 hours, depending on the specific charger and battery combination.

HOW TO CHARGE A NIKON LITHIUM BATTERY



The battery will charge while the camera is off. Keep the plug straight during insertion and removal. The camera charge lamp (w) lights amber while charging is in progress. The lamp turns off when charging is complete. An exhausted battery will fully charge in about 2 hours and 30 minutes. Disconnect the USB cable when charging is complete.



EN-EL15c. Introduced in 2020. Can be charged when inserted into Z 8, Z f, Z6III, Z 6II, Z 7II, Z 6, Z 7, Z 5 & D780 battery chamber via USB connection or use the MH-25a or MH-34 battery charger. Warning: Cannot be ???

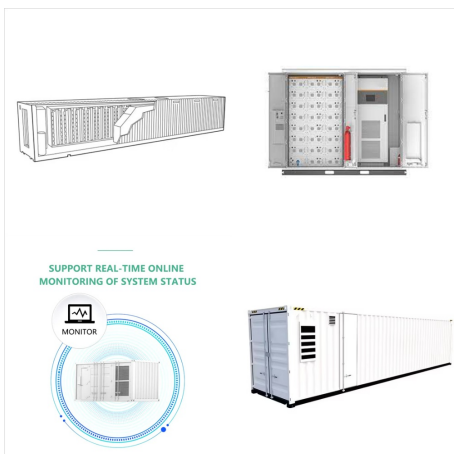


The battery will charge while the camera is off. Keep the plug straight during insertion and removal. The camera charge lamp (w) lights amber while charging is in progress. The lamp turns off when charging is complete. Assuming a 5 V/500 mA input, an exhausted battery will fully charge in about 2 hours and 40 minutes.

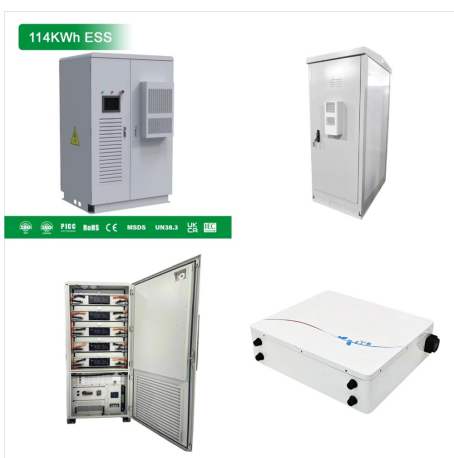
HOW TO CHARGE A NIKON LITHIUM BATTERY



What is the best charging routine for a lithium-ion battery? The best charging routine for a lithium-ion battery balances practicality with the principles of battery chemistry to maximize longevity. Here are the key points to consider for an optimal charging routine: Partial Charges: Avoid charging the battery to 100% every time. Studies



The EN-EL15c is a Rechargeable Lithium-ion battery for use with select Nikon cameras. It can be charged using either the MH-25a battery charger or the EH-7P charging AC adapter when used with Nikon cameras that ???



The charging indicator light on the camera will turn on to indicate that the battery is charging. 3. Connect the USB Cable. To charge the camera using a USB cable, connect one end of the cable to the charging port on the camera and the other end to a USB port on your computer or a USB charger. Again, the charging indicator light on the camera

HOW TO CHARGE A NIKON LITHIUM BATTERY



Insert the battery and plug the charger in. A battery will fully charge in about 2 hours and 40 minutes (when using the EN-EL25a) or 2 hours and 30 minutes (when using the EN-EL25) (when charging an exhausted battery). In some countries or regions, charger may be supplied with adapter connected. The CHARGE lamp will flash while the battery