

How to wire solar panels together?

Wiring solar panels together can be done with pre-installed wires at the modules, but extending the wiring to the inverter or service panel requires selecting the right wire. For rooftop PV installations, you can use the PV wire, known in Europe as TUV PV Wire or EN 50618 solar cable standard.

How to connect solar panels in series?

Solar connectors can be used to connect solar panels in series, parallel, or series-parallel. Installing them in series is quite simple while installing them in parallel requires an additional component. To connect solar panels in series you just plug the positive connector of a PV module into the negative connector of the next module.

How do I connect a solar panel to my solar panel?

You'll need to get a pair to complete these steps. Connect the 2 positive solar panel cables to the compatible Y connector. This will likely be the FFM connector. (FFM stands for "female, female, male," meaning the Y connector with 2 female MC4 connectors and 1 male MC4 connector.)

How do I wire solar panels in parallel?

For example, if wiring 3 solar panels in parallel, use a pair of 3 to 1 branch connectors. And if wiring 4 solar panels in parallel, use 4 to 1 branch connectors. Note: When wiring solar panels in series, I showed you how to confirm that they were correctly wired by checking the open circuit voltage of the 2-panel string with a multimeter.

What is solar panel wiring?

Solar panel wiring (also known as stringing), and how to wire solar panels together, is a fundamental topic for any solar installer.

How do you wire a solar panel with a battery?

12V is the most common solar panel wiring connection with batteries, as most appliances are designed to operate on 12V. With a 12V system, parallel orientation is usually preferred for both panels and batteries. This is because increasing the amps allows for devices to be powered for much longer than they could be when wired in series.

HOW TO CONNECT A SOLAR PANEL



In this article, we'll review the basic principles of wiring systems with a string inverter and how to determine how many solar panels to have in a string. We also review different stringing options such as connecting solar panels in series ???



Connect the solar panels either directly to a power inverter and then connect it to the home grid, or connect the inverter to the battery and then to the home power grid. This power inverter converts the solar energy into energy that is consumable at home. Every panel on your roof uses direct current (DC) and your home power uses alternating



Here's the wiring diagram showing how to connect a solar panel to a battery: It's important to understand the following: Don't connect a solar panel directly to a battery. Doing so can damage the battery. Instead, connect both battery and solar panel to a solar charge controller. It's recommended you fuse your system.

HOW TO CONNECT A SOLAR PANEL



Can I Connect Any Solar Panel To An Anker Power station? Anker, a leading brand in portable power solutions, offers a range of power stations compatible with various solar panels. The short answer to the question above is yes. Some panels are going to be easier to connect than others, but with the right adapters, cables, and accessories you can



To wire solar panels to a breaker box, follow these steps: Set up the solar panels and disconnect the breaker box from the grid. Connect the inverter to the main breaker box using draw cables. Connect the solar charge controller to the panels and verify their current output using a multimeter.



Step 2: Connect the Solar Panel to the Charge Controller. Locate the solar terminals on the solar charge controller. They will usually have a solar panel icon or the letters "PV" next to them. (PV refers to PV modules, which is another way of saying solar panels.) Connect the solar panel's cables to the solar terminals.

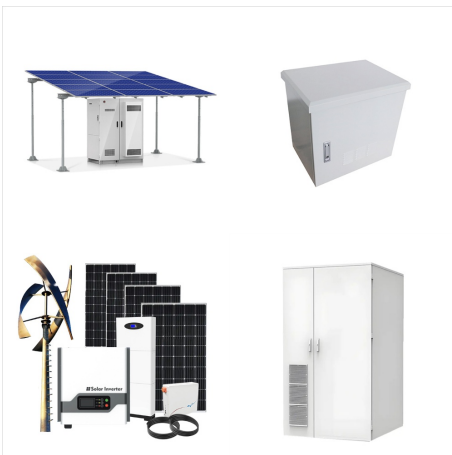
HOW TO CONNECT A SOLAR PANEL



Connecting solar panels might seem a little daunting, but it is actually quite simple. Solar panels can either be wired in series or parallel, each with its own set of pros and cons. The first step to setting up your array is to determine which style of wiring you'd like to use based on what works best with the specifications of the inverter



Understanding this push and pull action explains the intricacy of a solar panel wiring diagram and connecting solar panels to a home's electrical circuit for optimum results. Current. A current is the rate of a flowing charge of positive or negative particles (electrons). This movement produces heat, a magnetic field, or a chemical

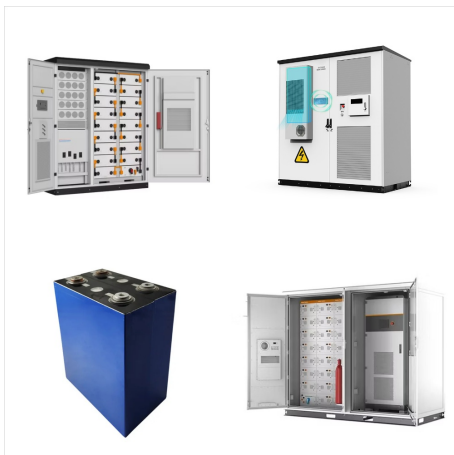


However, to truly harness the potential of solar energy, connecting the solar panels to an inverter is essential. The inverter serves as the heart of the solar power system, converting the direct current (DC) electricity produced by the solar panels into alternating current (AC) electricity, which is suitable for powering homes and businesses.

HOW TO CONNECT A SOLAR PANEL



As well as the positive equivalents. Then the negative out and the positive out will be utilized to connect to your charge controller via a solar PV cable. Please see the diagram below. Let's look at a numerical example. Say you have 2 x 100 Watt solar panels and a 12V battery bank.



10. Connect the Solar Panels to the Battery. With everything mounted and wired, it's time to connect the solar panels to the charge controller or power station. The precise setup will depend on whether your PPS has a built-in charge controller. You need to manually connect your solar panels if you don't have a built-in charge controller.



Connecting Solar Panels Together How to Connect Solar Panels Together. Connecting solar panels together is a simple and effective way of increasing your solar power capabilities. Going green is a great idea, and as the sun is our ultimate power source, it makes sense to utilize this energy to power our homes.

HOW TO CONNECT A SOLAR PANEL



Solar panel connections: How are solar panel connectors used? Learning how to use solar panel connectors is extremely important if you own a PV system. In this section, we teach you how to attach a solar connector to a ???



For example, if you're using 16 x 400W rigid solar panels, create a frame that can accommodate this many panels on your rooftop. When you have it laid out, install mounting brackets and affix the panels. Connect the panels using cables, whether wiring in parallel or series. Optimal placement is critical for getting the most from your investment.



Similar to step 3, take the negative terminal of the first solar panel and connect it to the negative terminal of the second panel. Again, strip the ends of the cables and use a crimping tool to make a secure connection. Repeat this process until all of the negative terminals are connected. 5. Install a junction box:

HOW TO CONNECT A SOLAR PANEL



These videos show how to connect two 100 watt solar panels in parallel and series using MC4 branch connectors. For a parallel connection, connect positive leads with one adapter and negative leads with another adapter, and then connect to the adapter kit. For a series connection, connect the negative lead from one panel with the positive lead



To connect solar panels in parallel, you require an additional component known as an MC4 combiner (or MC4 multi-branch connector), this name differs for other types of solar panel connectors. The image above illustrates a 4-in-1 MC4 combiner, but these components can be 2 in 1, 3 in 1, and so on. By using a 4-in-1 MC4 combiner you can connect



* If you have a battery monitor such as a Link or Xantrex 1000 or 2000, it is important to connect the negative wires from the controller to the shunt of the battery monitor. Otherwise, the monitor doesn't see the power coming in from the solar panel and will give inaccurate readings. * There is a sequence to follow in connecting the solar system.

HOW TO CONNECT A SOLAR PANEL



By looking closely at your energy use, choosing the right system, and getting the permits, you're almost ready for solar panels. Fenice Energy, with over 20 years of experience, is here to help all the way. Let's get your solar journey started! how to connect 3 solar panels. Connecting three solar panels is simple.



Step 4: Connect the Solar Panels to the Solar Charge Controller. Connect the charge controller to the battery, if you haven't already. Then connect the solar panels to the charge controller like normal. Note: Before you do, make sure your charge controller's max PV voltage is greater than the max open circuit voltage of your solar panel string.



Connect Two Jackery Solar Panels Together For A Quicker Charge. The popular Jackery SolarSaga 60W and SolarSaga 100W/100X solar panels are great for travelers that are looking for portable panels to charge their power stations.. Combined with one of the Explorer power stations, the SolarSaga panel makes it possible to be out and about far from the grid ???

HOW TO CONNECT A SOLAR PANEL



We recommend that the Solar Panel is at a 45 degree angle facing the sun. Wrap any spare cable round the cable holder, and clip the cable into one of the cable stops. Connect your Solar Panel to your Spotlight Cam Pro, using the USB-C cable. Use the cable clips to secure the cable in place. Was this article helpful?