



Can lithium ion batteries be recycled?

Lithium-ion batteries and devices containing these batteries should NOT go in household garbage or recycling bins. Lithium-ion batteries SHOULD be taken to separate recycling or household hazardous waste collection points. To prevent fires, tape battery terminals and/or place lithium-ion batteries in separate plastic bags.

How do you dispose of lithium batteries?

To dispose of lithium batteries, you'll need to take them to a recycling center, which is easy to find online. Keep batteries out of your regular recycling bin. Household batteries are recycled separately from other items. Mixing batteries in with other recyclables can result in a fire, as the battery can spark.

How do you dispose of a single use battery?

Every year in the United States, millions of single use and rechargeable batteries are bought, used and recycled or disposed of in the trash. Batteries come in various chemistries, types and sizes to fit their use. Single-use batteries can generally be removed from the device when they stop powering the device.

Can you put lithium batteries in the trash?

Unlike alkaline batteries, lithium batteries are reactive and contain hazardous materials. For this reason, you should not put them in the trash. To dispose of lithium batteries, you'll need to take them to a recycling center, which is easy to find online. Keep batteries out of your regular recycling bin.

Can rechargeable batteries be recycled?

Rechargeable batteries can be recycled. Look for the battery recycling seals on rechargeable batteries. Recycling companies dispose of the components of rechargeable batteries properly. The metals and chemicals don't end up in streams and landfills. The Home Depot has partnered with Call2Recycle, a nonprofit battery recycling program.

How do you recycle lithium primary batteries?

HOW TO DISPOSE OF NON RECHARGEABLE LITHIUM BATTERIES



When preparing lithium primary batteries for recycling, always cover the electrical connections or battery terminals with a non-conductive tape (electrical or vinyl) or seal individual batteries in separate plastic bags so they cannot conduct electricity.



The first step is to check whether the battery is lithium-ion ??? a rechargeable battery or a lithium-metal battery, i.e. non-rechargeable. The disposal process of these types may be different so you should always read the label.



Learn the best methods to safely dispose of lithium batteries, including recycling tips and precautions to protect the environment. Lithium batteries are a type of rechargeable battery that uses lithium ions to store and release energy. They come in various forms, including: Cover Battery Terminals: Use non-conductive tape to cover the

HOW TO DISPOSE OF NON RECHARGEABLE LITHIUM BATTERIES



Alkaline, automotive, button, and rechargeable batteries. SBK Recycle 6815 26th St E, Fife (253) 539-9095 / Website. Accepts: Button and rechargeable batteries. Tacoma Recovery & Transfer Center 3510 S Mullen St, Tacoma (253) 502-2100 Website



In the evolving landscape of battery technology, the choice between rechargeable and non-rechargeable AA lithium batteries is pivotal for both consumers and businesses. This article delves into the nuances of each type, comparing their performance, cost-effectiveness, environmental impact, and suitable applications to help you make an informed decision. ???

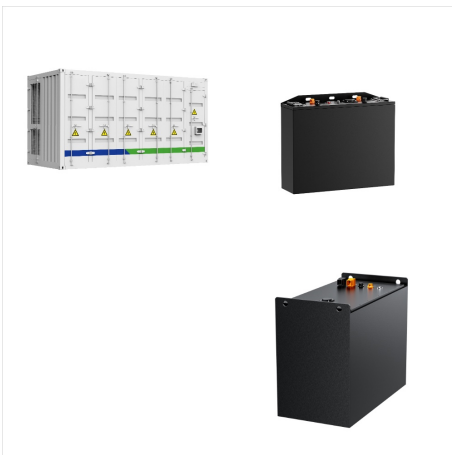


Unfortunately, most batteries cannot be disposed of in regular recycling or trash bins due to their harmful contents, such as heavy metals. However, the good news is that by following proper battery disposal practices, we can make a ???

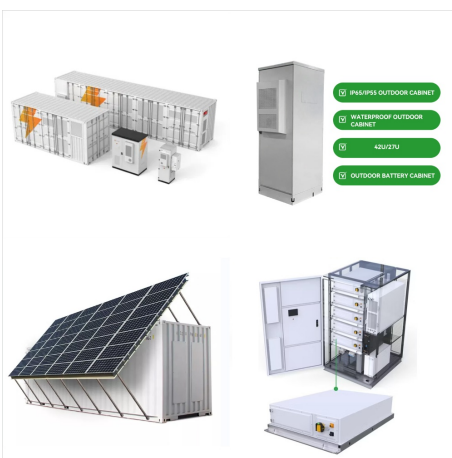
HOW TO DISPOSE OF NON RECHARGEABLE LITHIUM BATTERIES



Implementation Timeline. On and after January 1, 2026, Consumers will be required to pay a covered battery-embedded waste recycling fee. This fee will apply when purchasing a new or refurbished CBEP. On or before August 1, 2027, CalRecycle and DTSC will review the covered battery-embedded waste recycling fee for CBEPs. Upon review, we will make fair and ???



Call2Recycle specializes in battery recycling and lets you narrow your search by whether you're looking to recycle rechargeable batteries, single-use batteries, cell phones, or e-bike batteries

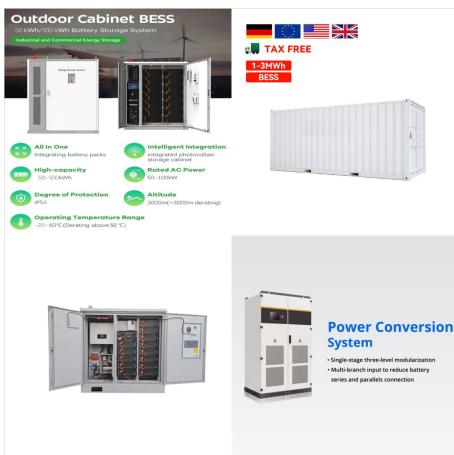


How To Dispose Of Damaged Lithium-Ion Batteries Properly. While awaiting proper disposal, make sure to place the damaged battery in non-flammable material. Lithium-ion batteries are rechargeable batteries made of nickel, cobalt, copper, manganese, electrolyte, and certain forms of plastic casing.

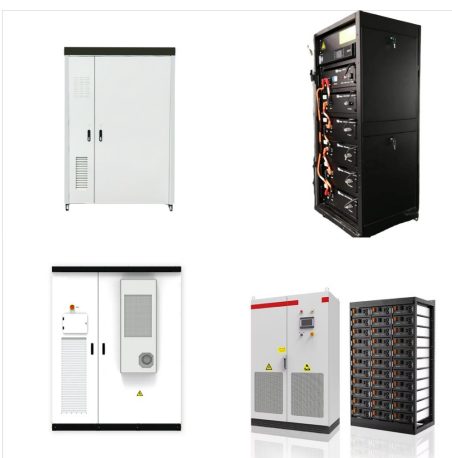
HOW TO DISPOSE OF NON RECHARGEABLE LITHIUM BATTERIES



, single-use batteries were made with mercury, a hazardous material that doesn't belong anywhere near a landfill or a recycling bin. However, batteries manufactured since then are made with non-hazardous metals and therefore can be thrown away in the regular trash ??? that is, in every state but California, where it is illegal to



Non rechargeable batteries, also known as primary batteries, are a type of battery that cannot be recharged once they have exhausted their stored energy. How to Dispose of Non Rechargeable Batteries. Lithium batteries, however, are best suited for devices that require high amounts of energy, such as digital cameras. SEE ALSO Best



If you need to dispose of lithium batteries, look for a local recycling center instead of throwing them in the trash, which can cause a fire. To find a store near you that collects lithium ???

HOW TO DISPOSE OF NON RECHARGEABLE LITHIUM BATTERIES



The program is simple. Just collect the batteries and cellphones that you are no longer using. Find the nearest Call2Recycle collection site from the more than 30,000 across the U.S. and Canada, either by visiting our location finder or calling 1.877.2.RECYCLE and drop the items off at no charge. The collection site will ship the batteries and cellphones to our recycling partners, ???



Many drop-off services offer battery recycling for free, while some sites require a small charge. Mail-in battery recycling programs are more convenient, but you'll pay for the service, with services like WeRecycle starting at \$44.95 for the smallest mail-in option. Packaging is normally fire retardant and may include other means of making



In addition to the environmentally friendly disposal of lithium-ion batteries, their recycling is also increasingly coming into focus. Currently, too few portable batteries are collected and recycled worldwide. According to Chemical Abstracts Service, only 5% of the world's Lithium-Ion batteries were recycled in 2022.

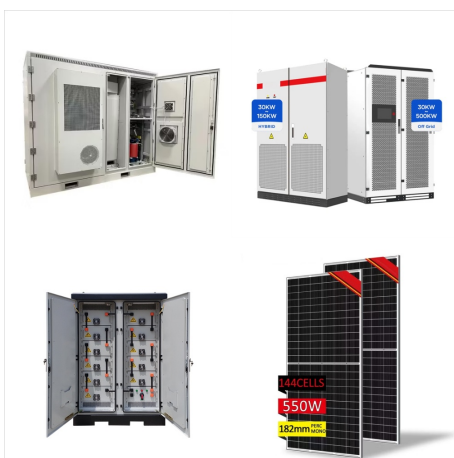
HOW TO DISPOSE OF NON RECHARGEABLE LITHIUM BATTERIES



Discover eco-friendly ways to recycle old rechargeable batteries. Learn about recycling options and why proper disposal is necessary. Lithium-ion (Li-ion): Found in smartphones, laptops, When transporting your batteries to the recycling location, place them in a non-conductive container (plastic or cardboard) and keep them separated to



Many batteries, particularly rechargeable lithium-ion batteries used in many electronics, have a significant risk of fire if they are mishandled or damaged. For that reason, it is important to handle used batteries properly. While households are not required to recycle batteries, putting non-alkaline batteries in the trash or curbside

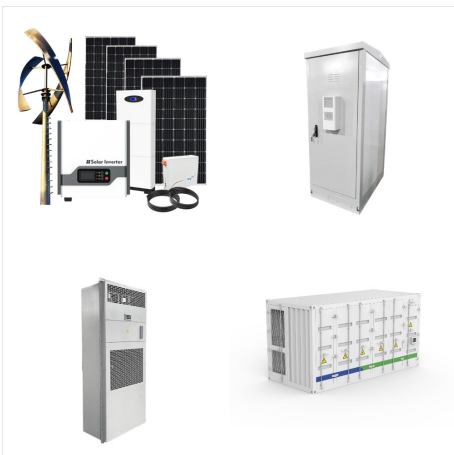


Battery Recycling Rechargeable Batteries. Call2Recycle offers a free recycling program for rechargeable batteries, with collection sites at many municipal transfer stations and recycling centers, and at some hardware stores..The program accepts all types of rechargeable batteries (Ni-Cd, lithium, metal hydride), including those from power tools in laptops, tablets and other ???

HOW TO DISPOSE OF NON RECHARGEABLE LITHIUM BATTERIES



The purpose of recycling lithium-ion batteries is to avoid toxic electronic waste from clogging the landfills and to use the retrieved materials in the fabrication of new products. If you want to dispose of or recycle your old batteries, here are ???



lithium, and may contain silver, cadmium, or mercury. programs, or special battery recycling programs. Non-removable batteries contained in electronic devices: Rechargeable Type of Battery Chemistry Alkaline and zinc-carbon Button-cell or coin Lithium single use Lithium-ion



Battery Types Primary batteries are non-rechargeable batteries. They include zinc carbon batteries, alkaline batteries, button cell batteries and lithium batteries. The zinc carbon battery is labeled as "all purpose" or "general purpose" and discharges quickly if used continuously.

HOW TO DISPOSE OF NON RECHARGEABLE LITHIUM BATTERIES



Do not attempt to modify lithium-ion batteries. Modifying lithium-ion batteries can destabilize them and increase the risk of overheating, fire and explosion. Read and follow any other guidelines provided by the manufacturer. Storage. Store lithium-ion batteries with about a 50% charge when not in use for long periods of time.



How Do I Dispose of Lithium-Ion Batteries? TOP. How Do I Dispose of Lithium-Ion Batteries? SHARE. Share by Email. Share by Facebook. Non-vehicle rechargeable batteries weighing less than 25 pounds and in good condition: May be returned through the Call2Recycle retail collection takeback program:



But does recycling really work? Great example: since its inception in 1994, Call2Recycle has recycled over 100 million pounds of used rechargeable batteries. This national mindset to recycle has enabled Energizer (R) to pioneer technology that reuses battery material to create new batteries. So already we're helping to make a difference.

HOW TO DISPOSE OF NON RECHARGEABLE LITHIUM BATTERIES



You must take batteries to an authorized recycling center, a universal waste handler or a household hazardous waste disposal facility. When you know how to dispose of batteries, you can help the environment. Dropoff sites typically accept rechargeable batteries for recycling. For single-use batteries, you can get a mail-order recycling kit.



Basically, all batteries apart from those designed for vehicles or industrial use can be dropped off for recycling this way. (The terminals of lithium batteries should ideally be taped up first

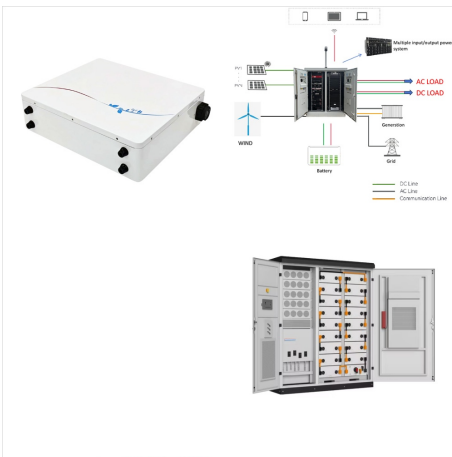


Batteries vary, from regular alkaline and carbon-zinc batteries to single-use or rechargeable lithium-ion batteries to small sealed lead-acid. They serve nearly endless purposes as well. However, like everything else artificial, they eventually turn into trash.

HOW TO DISPOSE OF NON RECHARGEABLE LITHIUM BATTERIES



When it's time to get rid of the batteries, start by checking local ordinances. A few cities and towns will recycle any batteries for you if you just leave them in a plastic bag on top of your trashcan. About half of states have laws mandating specific disposal methods for consumers.

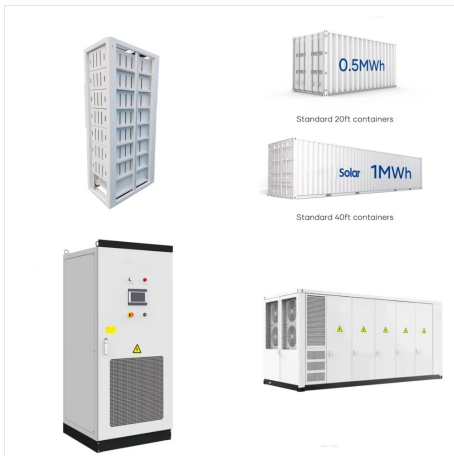


It's important to reuse and recycle these non-renewable materials to conserve the resources our Earth provides for us. a nonprofit that leads rechargeable battery recycling programs recently started offering mail-in single-use battery recycling that cost between \$68 and \$3,80 for an entire Lithium single-use: Found in cameras, watches



Take rechargeable batteries to a recycling facility. Donate or recycle lithium-ion batteries. Storing your batteries in a non-conductive container will reduce the risk of fire, leakage, or rupture. If you still have the original packaging for your batteries, this is a relatively safe way to store old batteries for disposal.

HOW TO DISPOSE OF NON RECHARGEABLE LITHIUM BATTERIES



Call2Recycle is the nonprofit that leads the United States' largest rechargeable battery recycling program and they have a recycling search locator to help you find a retailer that accepts rechargeable batteries, usually for free. The following are just some of the businesses that collect rechargeable batteries for free recycling through



Recycle your batteries in a local battery drop-off bin or at a recycling centre. What to avoid when recycling lithium-ion batteries: Do not throw out batteries in your regular household garbage or recycling bin. Do not burn batteries in a fire, ???