

How to revive a dead lithium-ion battery?

With a few steps, you can revive your dead lithium-ion batteries. You'll need these tools: Then, follow the following steps: Disconnect your device from its power source, turn it off, and remove the battery. Using a voltmeter, take a reading of the voltage. If the voltage is below the original, proceed with the process.

Can You recondition a dead lithium ion battery?

Fortunately, you can bring your dead lithium-ion batteries back to life by reconditioning them. Reconditioning lithium-ion batteries restores most of their capacity, allowing you to use them for longer. What Are Lithium-Ion Batteries? These are rechargeable batteries containing lithium ions in a non-aqueous electrolyte.

What happens if a lithium ion battery dies?

After using a lithium-ion battery for a couple or more years, its degradation rate starts affecting its performance. Eventually, it starts charging slowly, loses power quickly, and stops charging altogether. At this point, it's considered dead. Fortunately, you can bring your dead lithium-ion batteries back to life by reconditioning them.

Can you force charge a dead lithium-ion battery?

Attempting to jump-start or force charge a dead lithium-ion battery can result in overheating and even explosion due to the accumulation of gas inside the battery cells. This poses serious safety risks and should never be attempted. So what should you do if your lithium-ion battery is completely dead?

What should I do with old Lithium ion batteries?

Never throw lithium-ion batteries in the regular trash. They should be taken to designated recycling centers or drop-off locations where they can be handled safely and responsibly. Many electronic retailers and manufacturers offer recycling programs for old batteries.

How do you know if a lithium ion battery is dead?

If your 3.7v lithium-ion battery's voltage drops to below 1.5volts, it's dead. Most lithium-ion batteries have a nominal voltage of between 3.7v-4.2v. The minimum safe voltage is usually around 2.7v, and the manufacturers normally indicate it on the manual. When the battery goes below the indicated minimum

HOW TO FIX A DEAD LITHIUM ION BATTERY



voltage,it's dead.



Make sure you don't have a lithium-ion battery. Your battery has to be either Nickel-Metal Hydride (NiMH) or Nickel-Cadmium (NiCD) in order for this method to work. If you do this method with the wrong battery, the battery will likely be destroyed. All Macs have lithium batteries, and many modern Windows computers also use lithium batteries.



4: Do not fully discharge lithium-ion batteries. When lithium-ion batteries are not in use, how should they be stored? The batteries should be charged to around 30 to 50 percent capacity and stored at room temperature. To avoid overcharging, ???



26K. 2.8M views 6 years ago. Check out my newest 18650 salvage video: ??? Revive dead 18650 batteries (29) from Today I will show you how to revive a dead 18650 Li-ion cell that's being

HOW TO FIX A DEAD LITHIUM ION BATTERY



How do you fix a non-charging lithium-ion battery? If your battery is no longer able to hold a charge and is rapidly draining, a full recharge may be able to save it. For this to work, you'll need to completely drain the battery, so once it gets zero percent, keep turning it back on until it can't even boot. Is it possible for a dead



? A truly dead lithium-ion battery???one that is old or physically damaged???won't likely come back to life, no matter what you do. But there's hope for some batteries, especially if they've just fallen into a deep discharge state or are showing signs of age rather than true failure. Reviving a battery is a good temporary fix, but to

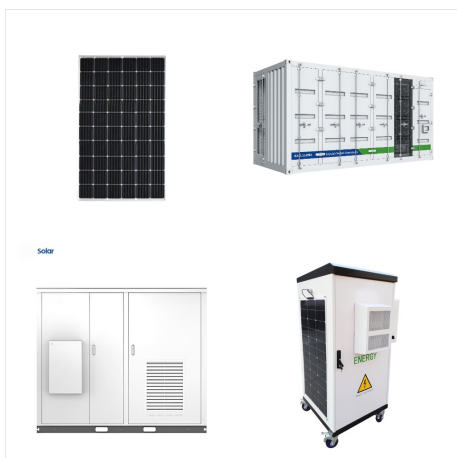


Figure 1: Sleep mode of a lithium-ion battery. Search online for new or good used batteries or a local computer repair shop. On October 26, 2017, Stephen Pirie wrote: I had suffered the same "battery dead, not charging after complete discharge" scenario some two weeks ago on a brand new hp06 battery that had barely lasted a month.

HOW TO FIX A DEAD LITHIUM ION BATTERY



If your 3.7v lithium-ion battery's voltage drops to below 1.5volts, it's dead. Most lithium-ion batteries have a nominal voltage of between 3.7v-4.2v. The minimum safe voltage is usually around 2.7v, and the manufacturers normally indicate it on the manual. When the battery goes below the indicated minimum voltage, it's dead.



Part 1. Causes of dead batteries. Overcharging: Leaving devices plugged in for extended periods, especially overnight, can lead to overcharging, damaging the battery's capacity and overall health. High Temperatures: Exposing batteries to high temperatures, such as leaving them in a hot car or near a heat source, accelerates chemical reactions within the battery, ???

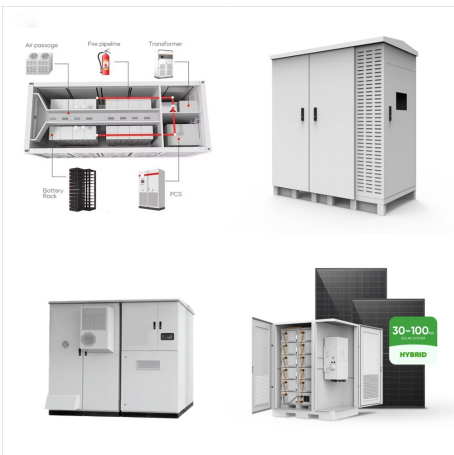


The Craftsman 19.2V drill can make for a lightweight, high-power, versatile drill is no wonder that thousands of craftsmen in the United States and around the globe add these to their tool benches. Even better, they come with a pair of lithium-ion batteries to ensure that you can keep working around the clock.

HOW TO FIX A DEAD LITHIUM ION BATTERY



Lithium-ion batteries are made to be charged between 41 ° F and 113 ° F (5 ° C and 45 ° C). Dead batteries that have just been removed from a tool are usually too warm to take charge immediately. This could cause the temperature light ???



By placing your dead lithium-ion battery in a sealed plastic bag and popping it in the freezer for about 24 hours, some people have reported success in resurrecting their batteries. If those methods don't do the trick, you can also try jump-starting your dead lithium-ion battery using another fully charged compatible device or an external



Typically, a Ryobi battery or any 40-volt lithium-ion battery maintains its performance for two to three years, or approximately 300 to 500 charge cycles. One charge cycle describes the timeline between completely charging the battery, utilizing it until it's fully discharged, and then charging it up once more.

HOW TO FIX A DEAD LITHIUM ION BATTERY



Symptom 3: Lithium battery expansion. Case 1: Lithium battery expands when charging. When charging lithium battery, it will naturally expand, but generally not more than 0.1 mm. However, overcharging will cause electrolyte decomposition, increase internal pressure, and finally lithium batteries expansion.

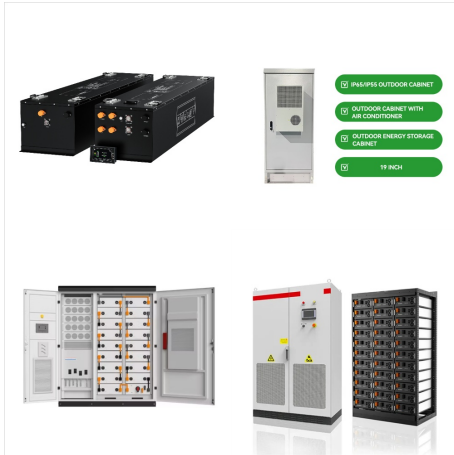


Say goodbye to the frustration of dead batteries ??? let's get started! The Problem With Lithium Ion Batteries. Lithium ion batteries have become the go-to power source for modern electronics due to their high energy density, long lifespan, and low self-discharge rate. However, despite these benefits, they're not without their problems.



Here's a guide on how to bring a dead lithium battery back to life. Understanding Lithium Battery Behavior. Before diving into revival techniques, it's important to understand how lithium batteries function. Lithium-ion batteries operate through the movement of lithium ions between the anode and cathode.

HOW TO FIX A DEAD LITHIUM ION BATTERY



How Do You Fix a Lithium-Ion Battery That Won't Charge? If you're wondering whether you can utilize the methods in the guide to revive a dead lithium-ion battery, here are some quick tips for reviving a dead battery. Firstly, try charging the battery using a different charger for a few minutes. If that doesn't work, gently tapping the



To attempt reviving a completely dead lithium-ion battery requires more specialized techniques like using low-level currents or applying pulses of energy gradually over time. These methods aim at awakening dormant chemical reactions within the cells and slowly restoring their ability to store and deliver electrical energy.



Charging the battery little by little helps to wake the battery from its slumber. It raises the battery's charge just enough so that you can then use the charger properly. Why is this necessary? If your battery won't charge normally, it means that the battery is ???

HOW TO FIX A DEAD LITHIUM ION BATTERY



Step 1: Determine Whether the Battery is Dead. Before attempting to revive a dead lithium laptop battery, it is important to determine whether the battery is truly dead or simply in need of a deep discharge. A deep discharge is a process that involves fully draining the battery and then recharging it to its full capacity.