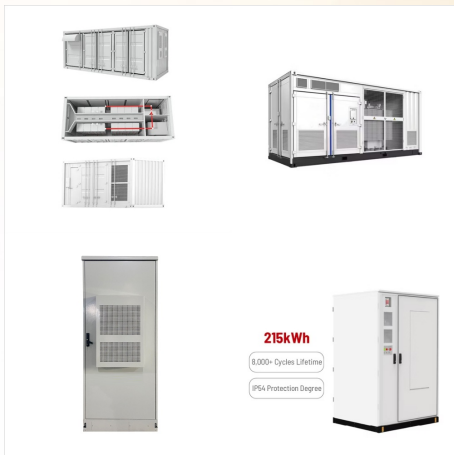




Remember: when you connect solar panels in parallel, currents from panels add up whereas the voltage stays low. Andrey Gorichenski. Senior Editor. Andrey had been a news editor and freelance writer for a number of medias before joining A1SolarStore team. Climate change and its impact on people's lives has always been among his interests and it



Wiring Solar Panels in a Parallel Circuit. Connect all the positive terminals of all the solar panels together, and all the negative terminals of all the panels together. eg. If you had 4 solar panels in parallel and each was rated at 12 volts and 5 amps, the entire array would be 12 volts at 20 amps.



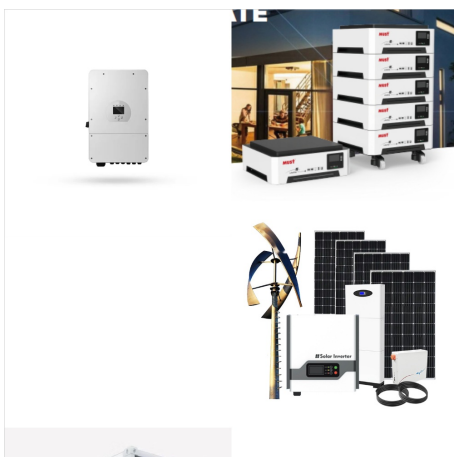
Yes, you can connect solar panels to your home if you have the necessary skills, but it involves complex tasks like solar panel wiring, installing an inverter, and meeting safety codes. For grid-tied systems, approval from your ???



This array then connects to the inverter. The process efficiently changes solar-generated DC power into usable AC. This allows your home's systems and devices to run on solar energy. The inverter is usually placed close to the house's main power panel. This placement helps connect the solar setup smoothly with your home's power supply.



How to Connect Solar Panels in Series or Parallel. Understanding solar panel installation takes some long-winded technical explanations. The gist of all that jargon is that a solar PV system that works also meets your needs. Step one, you need to wire the panels in such a method as to design an electrical circuit. This step maximizes current



Wiring solar panels in series is arguably the easiest of the three methods. In series wiring, the positive of one panel connects to the negative of the next, and so on. This creates a string of panels with a negative wire at the ???



In this article, we'll review the basic principles of wiring systems with a string inverter and how to determine how many solar panels to have in a string. We also review different stringing options such as connecting solar panels in series ???



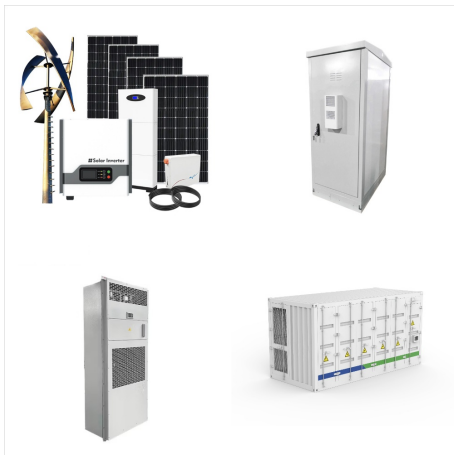
3. Connect the Solar Panel to the Charge Controller. After connecting the charge controller to the battery, it's time to connect the solar panel to the charge controller. Ensure that the connections are made in the proper sequence according to the manufacturer's instructions. This will allow for optimal energy transfer and utilization. 4.



Considering a switch to residential solar power? PV panel wiring diagrams are a must for maximizing your electricity production & your return on investment. For example, many RVs and other portable applications use appliances and systems that require 12V power. If you connect more than one or two 400W portable solar panels in series, the



Step 5: Connect Solar Panels in Series or Parallel. During Step 1, you should have already decided whether you'll benefit most from connecting your PV panels in series or parallel. Series Connection. For series connection, ???



How to connect your solar panels depends on: The type of your solar panels system, The solar power you want to generate, The other system components, such as a charge controller, battery, and inverter. There are two main types of connecting solar panels ??? in series or in parallel.



Having complete ownership over your solar panel system allows you to save more money in the long run but requires a larger initial investment. Solar leases do not need any money upfront but involve monthly payments and less system ownership. Weigh these options based on what best suits your situation. How long do solar panels last? At minimum



There are two main ways to connect solar panels: parallel or series. In a parallel setup, the positive terminals connect to each other, and so do the negative ones. This keeps voltage the same but adds more amperage. Series connections link the positive side of one panel to the negative side of the next. This boosts voltage while maintaining



Wiring multiple solar panels in series means you are wiring each panel to the next. This solar panel connection creates a string circuit. The wire that runs from the solar panel's negative terminal is connected to the next panel's positive terminal, and so on. Connecting in series is one of the easiest ways to connect your solar power systems.



Mount the Solar Panels: Install the solar panels securely according to your chosen mounting system. If your solar panels need brackets or rails, set up them and follow the manufacturer's instructions for proper installation and alignment.
Prepare Solar Panels for Wiring: Attach the MC4 connectors to the solar panel cables. Ensure a proper



This setup ensures that your panels absorb maximum sunlight and convert it efficiently, making it a powerful contributor to your energy arsenal. Connect Solar Panels to Inverter and Home Electrical Panel. After securing your solar panels on the roof, the next step is to bring their power down to earth???or more precisely, into your home.



Mount the Solar Panels: Install the solar panels securely according to your chosen mounting system. If your solar panels need brackets or rails, set up them and follow the manufacturer's instructions for proper installation and ???



How to Connect Panels in Series. To connect solar panels in a series, you connect the positive wire of each panel to the negative wire of the next and vice versa, alternating in this way. Advantages of Wiring in Series. Most residential solar panels are connected in series. When you connect solar panels in series, the voltage adds up, but the



Mixing Mismatched Solar Panels. Luckily there are only two variables that we have to take into account. These are current and voltage. As previously mentioned, when we connect solar panels in series, the voltage gets added up. When we wire multiple solar panels in parallel, the current gets added up.



One common setup is wiring solar panels in parallel, which allows for better power output and greater flexibility in system design. This article provides a comprehensive guide on wiring solar panels in parallel, including a detailed ???



With Fenice Energy's help, you can pick between series and parallel circuits to fit your needs. Whether you're boosting voltage or amperage, knowing how to connect solar panels makes your system more efficient and reliable. Connecting Two Solar Panels: Necessary Equipment and Tools. Linking two solar panels means more than just attaching them.



Step 5: Connect Solar Panels in Series or Parallel. During Step 1, you should have already decided whether you'll benefit most from connecting your PV panels in series or parallel. Series Connection. For series connection, connect the positive pole of one module to the negative second, third and fourth modules correspondingly. A series



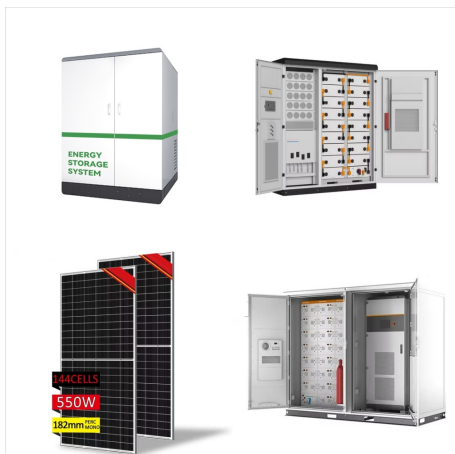
How to Connect Solar Panels in Series or Parallel. Understanding solar panel installation takes some long-winded technical explanations. The gist of all that jargon is that a solar PV system that works also meets your needs. ???



Now I grab the MC4 to XT60 adapter included with my Delta Max, and connect the two solar panel wires to it. Before connecting it to my power station, I add the voltages of the panels together to make sure I am within the 11-100V range. Two 100W 12V panels, rated at 18V each will output around 36V together (18 times 2).



Solar panel wiring or stringing panels together is one of the essential skills every solar installer and contractor needs to understand if they want to succeed in the industry. Whether you're brand new to the solar industry or a seasoned professional looking to brush up on your wiring skills, this guide will cover everything you need to know



We're going to show you step-by-step how to connect your solar panels either in a series or parallel circuit, which circuit wiring is better, and how to correctly plug these solar kits into



Connect Two Jackery Solar Panels Together For A Quicker Charge. The popular Jackery SolarSaga 60W and SolarSaga 100W/100X solar panels are great for travelers that are looking for portable panels to charge their power stations.. Combined with one of the Explorer power stations, the SolarSaga panel makes it possible to be out and about far from the grid ???