



What are anime Power Systems?

Anime power systems are becoming more detailed and strategic, adding layers and depth to battles and confrontations. Anime is home to some of the most complex power systems ever conceived. The rules and mechanics behind these supernatural abilities are often integral to the story, driving character growth and moving the plot forward.

What magic/power systems do you think of in anime?

Usually, when I think of magic/power systems in anime, I tend to think of something close to Avatar (the last airbender, not the giant smurfs), but that's probably because it's the closest and the most mainstream western type of magic there is, seeing as the show is American.

What makes a good anime prequel?

A good prequel can really enrich the story of an anime, and these are among the very best. The powers escalate logically within each system, avoiding clumsy pulls. Hard magic systems with clear costs and limits are favored over vague, soft magic. The diversity of anime power systems is one reason the genre continues to innovate and entrance fans.

Do fantasy stories based on magical power systems have rules?

Many fantasy stories based on magical power systems have no rules. Whoever has power can do anything, anytime, and that in itself is a rule. This is the million-dollar question most people ask. You'll hear that there's no such thing as a unique power system, that someone has already beat you to whatever fresh idea you think you have.

HOW TO MAKE AN ANIME POWER SYSTEM



In Hindu philosophy including yoga, Indian medicine, and martial arts, prana (???????????? 3/4 ???, pr?????a; the Sanskrit word for "life force" or "vital principle") [1] is all cosmic energy, permeating the Universe on all levels. Prana is often referred to as the "life force" or "life energy". It also includes energies present in inanimate objects.



While the definitive usage of Chakra almost vanished by the start of Naruto Shippuden, it is still a great power system. 1. Nen ??? Hunter x Hunter. The best power system unofficially in all Shonen anime is undoubtedly Nen. It follows all the top three rules of a good and efficient system, i.e., creativity, power, and limits.



Rank the power systems from the most popular Shonen animes! Animes in order: Fire Force, AOT, Full Metal Alchemist, Jojo's Bizarre Adventure, HxH, Bleach, Naruto, Dragon Ball, One Punch Man, Seven Deadly Sins, One Piece, My Hero Academia, Black Clover, Fairy Tail, Chainsaw Man, Demon Slayer, One Piece, Fairy Tail, Bleach, and Mob Psycho 100.

HOW TO MAKE AN ANIME POWER SYSTEM



There's a reason why we always gravitate to the Shonen side of the animation genre. It's the power fantasy, the sheer unbridled joy of seeing characters engage in new forms of combat that was born from their desire to become stronger. Over the years, a ton of systems have been invented for various anime series and their manga source material. Sometimes wild, ???



The following is a comprehensive overview of the hierarchical system the VS Battles Wiki utilizes to properly categorize and index fictional characters, entities, and objects based on the scale of their feats and the varying scopes that they can affect or create/destroy. Though Destructive Capacity and Area of Effect are some primary ways to qualify for a particular tier, they are not ???

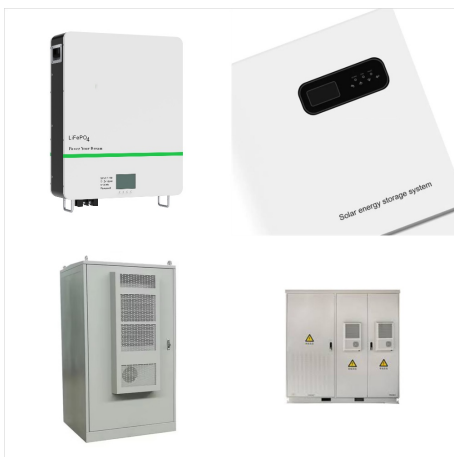


Power systems in shonen anime are often arbitrary, as is in the case of the Naruto series, where powers like the Sharingan could easily bring about the destruction of the world. On the other side, there are shonen anime like Demon Slayer and Tokyo Ghoul where systems are put in place to classify or rank powerful individuals that exist within

HOW TO MAKE AN ANIME POWER SYSTEM



The Anime Power Generator can generate thousands of ideas for your project, so feel free to keep clicking and at the end use the handy copy feature to export your anime powers to a text editor of your choice. Enjoy! What are good anime powers? There's thousands of random anime powers in this generator.



In most magic systems, characters are special when they are more powerful than anyone else. However, in individualized systems, you can make any character powerful by giving them the right ability. So if you want your character to feel special, reach for something else. The easiest method is to put your character in a category by themselves.

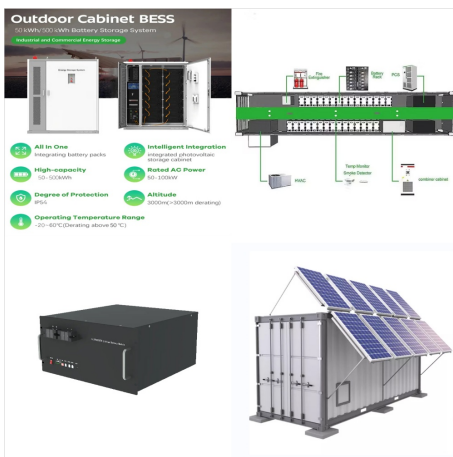


Draw inspiration from real-world mythology, history, and science to make your magic system feel grounded and believable. Great magic systems remix real-world magic traditions and scientific principles as inspiration. Thorough research fuels creativity in developing something unique yet believable. Study both the fantastical and practical.

HOW TO MAKE AN ANIME POWER SYSTEM



Tower of God's power system, otherwise known as Shinsu, is incredibly unique. Even among some of the most beloved Shonen power systems such as Nen, Spirit Energy, Haki, Devil Fruits, Chakra, and



A shonen without ironclad rules for its power system usually doesn't do very well, and it's because of this that many authors take the safer route and homage or integrate rules of concepts from other shonen series. The goal today is to talk about 10 of the biggest shonen power systems and how they're similar. 10 Food-Based Recovery

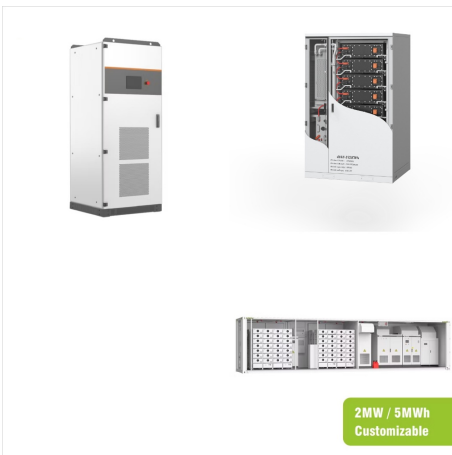


Some anime power systems are so good and recognizable that any anime fan can tell what series it's from, even if they haven't seen the anime. 10 Benders Can Move Continents (Avatar: The Last Airbender) The power system in Avatar: The Last Airbender is one of the best parts of this series. The series combines natural elements with real-life

HOW TO MAKE AN ANIME POWER SYSTEM



This guide will provide valuable tips to help you harness your creativity and master the art of anime power creation, ensuring your characters resonate with audiences and bring your stories to life. 1. Understand the Fundamentals of Power Systems: Before creating powers, familiarize yourself with existing power systems in popular anime. Examine



Those two systems you mentioned Nen and Stands are ironically two examples of two ways you can go about it. With Nen the System is free form where the power users basically build/choose their own powers using a certain format and the differences are guaranteed by the affinities and preferences of the character and the flexibility of the System (Within limits that are strict ???)



Anime's power systems are some of the most versatile across fiction as a whole. Many follow the same concept of honing enough of a certain emotion or energy to build a character's power. However, some of these systems follow a more unique path and are used as guidelines to rank the strongest individuals in a series' universe.