

Do you need a battery monitor for a lithium battery?

For lithium battery systems, a battery monitor is essential since lithium batteries hold their voltage through most of the discharge curve. A battery monitor measures the amount of energy going into and out of your batteries to give you an accurate state of charge measurement.

What is a battery monitor?

A battery monitor is a device that collects and displays helpful data such as battery voltage, power consumption, estimated remaining runtime, current consumption, and battery temperature. Now that you understand what a battery monitor is and why you need one, it's time to purchase one and install it in your battery system.

Which battery monitor should I buy?

If you're on a budget, I think the AiLi 350A Battery Monitor is a good bare-bones monitor that has the necessary features and settings you need to monitor your batteries for cheap. It'll perform the basic functions of monitoring your battery's voltage, state of charge, remaining capacity, and charging or discharging current.

What is battery monitor vs battery management system?

Battery Monitor Vs. Battery Management System (BMS) Lithium batteries have an integrated battery management system (BMS) that helps optimize their performance and protect them from operating outside of safe conditions. The BMS is the control center for individual batteries in a system, not the system as a whole.

How does a battery monitor work?

Its screen tells you the battery percentage, battery voltage, charging/discharging current, and remaining amp hours. That's all the information most people will need from a battery monitor. It doesn't display time remaining, which can be useful to get a sense of how much longer your battery will last.

How do you know if a lithium ion battery is fully charged?

When it comes to lithium-ion batteries, understanding the state of charge based on voltage alone is a bit like trying to find your way in the dark without a flashlight. Sure, you know if you're fully charged at 4.2 volts or empty at the low voltage cutoff around 2.8 volts, but the journey between these two points? That's where it

HOW TO MONITOR LITHIUM BATTERY



gets murky.



The MAX17043/MAX17044 is an ultra-compact, fuel-gauge systems for lithium-ion (Li+) batteries. The actual IC is tiny and the picture below show a typical breakout board for the chip, which makes it much easier to connect. With these circuits and code you can monitor battery charge levels accurately and react to low battery alerts quickly.



By carefully monitoring and maintaining proper charge levels, you can enjoy the peak performance and extended durability that lithium batteries offer. If you need expert advice or specialized lithium battery solutions, feel free to reach out to us at for personalized assistance and cutting-edge battery technologies fit for

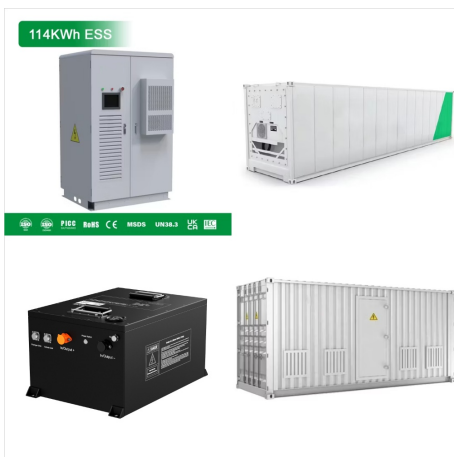


Installing the Ultimate9 Bluetooth LITHIUM Battery Monitor is hassle-free; the device is installed neatly on top of your battery without the need to remove any battery terminals or reset any radio codes. Simply loosen and slide the 8mm forked cable under the nut/bolt and re-tighten. This device is designed to monitor 12V batteries fitted to

HOW TO MONITOR LITHIUM BATTERY



The MAX17043/MAX17044 is an ultra-compact, fuel-gauge systems for lithium-ion (Li+) batteries. The actual IC is tiny and the picture below show a typical breakout board for the chip, which makes it much easier to a?|



You monitor them via the BMS as if they are seperate batteries. If you want to monitor SOC as a single entity, get a Victron shunt to put in front of both banks at the 24V side. I have two 13KW 48V banks in parallel, and the shunt provides combined SOC across the banks.



Lithium Battery Volt Meter Features Digital LCD blue display Size: approx. 61*33*13.5mm Cable Length: approx. 300mm Working current: <5mA Battery percentage indicator Battery voltage indicator Voltage Range: 6-63V Reverse polarity protection PVC screen protector, waterproof surface Suitable for lead-acid 12V, 2 Monitor your deep cycle 12v

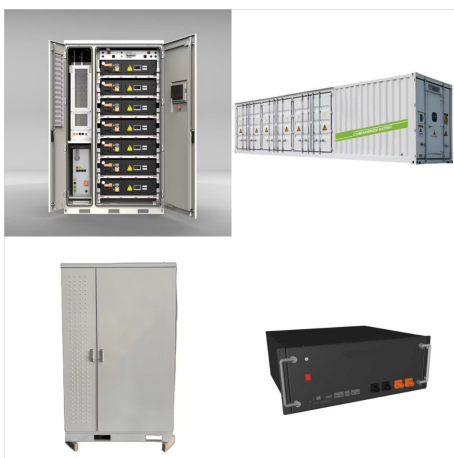
HOW TO MONITOR LITHIUM BATTERY



Buy Renogy 500A Battery Monitor with Shunt, High and Low Voltage Programmable Alarm, Range 10V-120V up to 500A, 20ft Shielded Cable, Compatible 12V Lithium Sealed, Gel, Flooded Batteries,Black: a?|

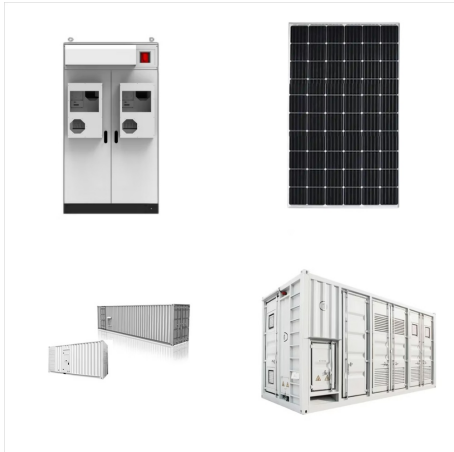


Bluetooth lithium battery. Connect your LiFePO4 battery to your smartphone or tablet. Monitor SOC, temperature, voltage, capacity and more! Skip to content +1 778-358-3925 support@canbat 24/7 Chat Support Buy Now Free Same-Day Shipping UL Certified 0% Financing Become a Dealer.



Most battery monitors work with virtually all types of RV and solar batteries, regardless of whether they're lithium iron phosphate (LiFePO4) or lead acid batteries. But the two main things to look at are the battery voltage and a?|

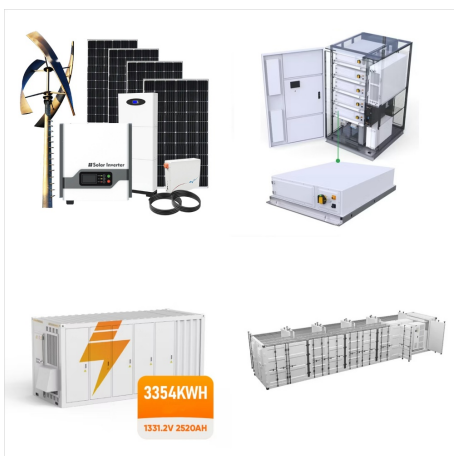
HOW TO MONITOR LITHIUM BATTERY



The battery monitor compatible with various types of battery: LifePO4, lithium-ion, and lead acid batteries. Another alternative is manual checking. Regularly using a multimeter to measure voltage and current can a?|



While the correct term is "Ammeter" a lot of people refer to this battery monitoring device as being an "Ampmeter." It's designed to track the actual amperage being discharged from the batteries, and it needs to be installed inline with the negative terminal of the 12 Volt RV battery.



Monitors over entire lifetime of battery allowing manufacturer warranties; Can be used to improve current battery health estimators; Publications. A. Allam and S. Onori, "Online Capacity Estimation for Lithium-Ion Battery Cells via an Electrochemical Model-Based Adaptive Interconnected Observer," in IEEE Transactions on Control Systems Technology

HOW TO MONITOR LITHIUM BATTERY



This Monitoring Screen, a high-precision meter, is the perfect companion to Renogy Smart Lithium Iron Phosphate Battery Series. Instead of measuring the current flowing in/out of the battery bank using a shunt, it can communicate directly with the battery management system (BMS) and obtain more accurate state of charge (SoC) readings compared to a?



An excellent battery monitor for RVs, boats, and 12-48V solar batteries. After testing 4 of the best battery monitors, the SmartShunt was my favorite. It's easy to install, has built-in Bluetooth, and works with 12-48V a?



This chapter explains all battery monitor settings. In addition to this we also have a video available explaining these settings and how the interact with each other to achieve accurate battery monitoring for both lead acid and lithium batteries. If the Peukert exponent is unknown, set it at 1.25 for lead-acid batteries and set it at 1.05

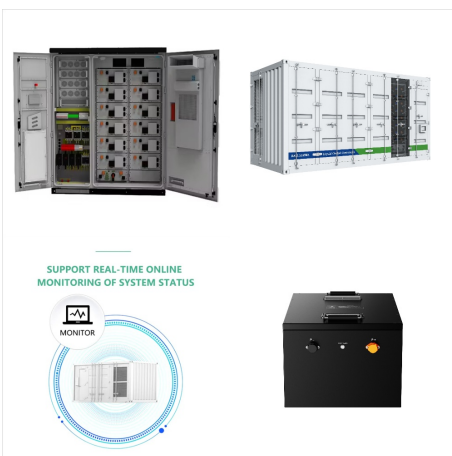
HOW TO MONITOR LITHIUM BATTERY



With a built-in Bluetooth battery monitor, you can turn your smartphone into a central database for all your battery needs. Both our Ionic Lithium Deep Cycle Batteries and our Ionic Lithium Starter Batteries have corresponding apps built specifically to support them.



A Lithium-ion battery's voltage does not simply fall linearly. Instead, its voltage drops pretty quickly when being used from a full charge. Then, it reaches somewhat of a plateau where the voltage drops slowly. Then, at the a?|



The Victron BMV-700 LiFePO4 battery monitor is a highly precise device to track important information regarding your Battle Born lithium battery system. It displays voltage, amperage, and the time remaining until the battery bank is fully charged or depleted. The Victron BMV can also monitor historical data, such as battery efficiency, average discharge, deepest a?|

HOW TO MONITOR LITHIUM BATTERY



Dakota lithium victron Smart Shunt and bluetooth battery monitor for lithium batteries for monitoring house battery system in RV, boats, Vans, or off grid system. 15% Off a?? Code: SeasonEndSale a?? Exclusions Apply, Valid 10/28 a?? 11/30. Your cart (0) Search your battery or use. Close.

APPLICATIONS



To monitor your system, you have two options: battery monitoring or Bluetooth monitoring. Battery monitors are often the simplest option; with these, you can see the amperage coming from your battery and the charge level. These are two of the most important variables to monitor and battery monitors are simple to set up.



Some Lithium battery models include their own internal BMS (Battery Management System). This is not used to communicate battery information to the Minn Kota Battery Monitoring System. When your Humminbird is set up to monitor lithium batteries, then the state of charge is automatically reset to 100% after the trolling motor system is off for 10

HOW TO MONITOR LITHIUM BATTERY



A Lithium-ion battery's voltage does not simply fall linearly. Instead, its voltage drops pretty quickly when being used from a full charge. and insights into the underlying science behind battery charge monitoring. Explore more do-it-yourself ideas from our articles, like building your own Powerwall, crafting an adjustable bench power

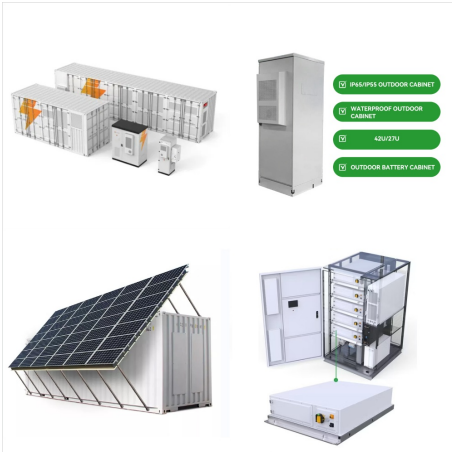


Installing the Ultimate9 Bluetooth LITHIUM Battery Monitor is hassle-free; the device is installed neatly on top of your battery without the need to remove any battery terminals or reset any radio codes. Simply loosen and slide the 8mm a?|



The BMV-700 is a high precision battery monitor. The essential function of a battery monitor is to calculate ampere hours consumed and the state of charge of a battery. How to set up BMV Battery Monitor for lead and lithium batteries (v6.09) - Windows (v5.107) - Windows (v6.09.1) - Android .apk (arm64) (v6.09.1) - Android .apk (x86_64)

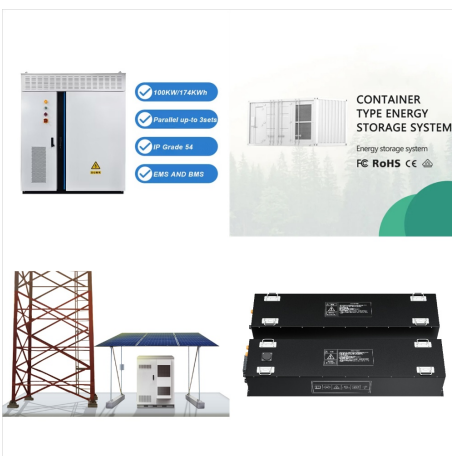
HOW TO MONITOR LITHIUM BATTERY



"Professional" battery SoC calculation is done by integrating the area under the current-vs-time curve, essentially to count how many coulombs of energy is going into or out of the battery, & comparing that to either (a) the theoretical/designed coulomb capacity of the battery, or (b) keeping track over long periods of time how many coulombs

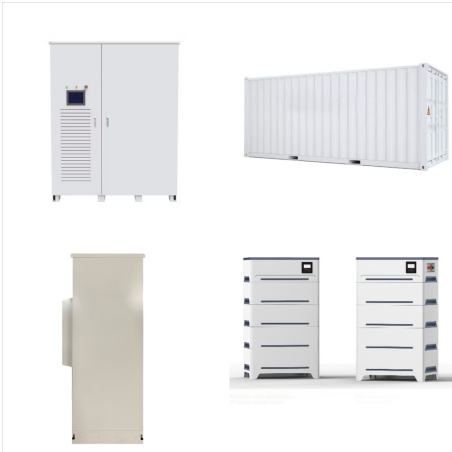


Checking the health of a lithium battery with a multimeter is essential for anyone working with or relying on lithium-ion batteries. This includes an initial voltage check after charging, investigating individual cell groups, assessing cell health, testing under load conditions, and monitoring self-discharge.



What does system monitoring do for your lithium power system, exactly? Victron Energy stands out as a leader in the industry for battery monitoring kits. Battery monitors have exceptional features, such as built-in Bluetooth compatibility, allowing you to access all the essential information about your system from your smartphone or tablet.

HOW TO MONITOR LITHIUM BATTERY



It's by far the most expensive battery monitor I've used. The screen is mediocre. It's small and only shows one spec at a time. Compare that to the screen of the Renogy 500A Battery Monitor, which is much bigger and shows you all the main specs at once. Who This Battery Monitor Is for. You want a battery monitor with both a screen and