

How to play lethal company solo?

Playing Lethal Company solo doesn't need any complicated steps. All you have to do is create your own session instead of joining one. To play solo, follow these steps: Create your own Session as the host. Change the Public Match to Friends Only mode. Do not invite anyone to the session. Start the game. That is all you have to do.

Is lethal company a good multiplayer game?

A sleeper smash hit when it came out, Lethal Company absolutely exploded over night and became the new hot multiplayer game everyone wanted to play. But it does come with quite a learning curve, and despite running it in groups or solo it can still be punishingly brutally hard at times.

How do you play lethal company?

Lethal Company has the players visiting different moons owned by the company to find valuables and scarps. Then, the players need to bring these scarps back into their ship and sell them through the terminal to fulfill the required quota and keep the company afloat. The game is best when playing in groups of four.

Does lethal company have single player support?

The co-op horror game has become the big new indie in the weeks after its release into early access. And while all the clips you see are likely in groups, there don't seem to be any solo players. So if your friends are too scared to jump in and you want to play on your own, we'll tell you all about Lethal Company single player support.

Can you play lethal company without friends?

Who needs friends anyway. Lethal Company isn't the kind of game that you can play without friends. Not that you'd even want to, considering all of the monsters you have to try and survive. For those who would much rather have a solo experience, however, it's definitely possible if you know what you're doing.

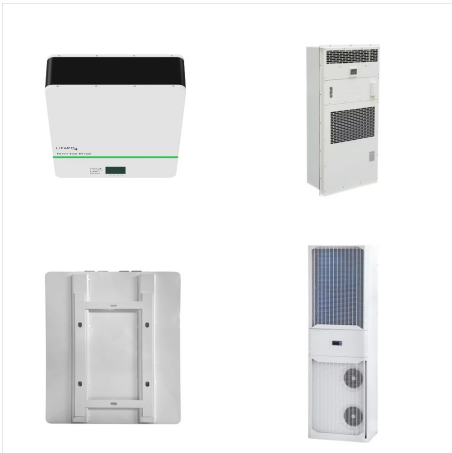
Should you play lethal company with mods?

Whilst Lethal Company purists might get a little tetchy about it, playing with Mods is a good way to make your solo experience more fun, smoother, and a little less stressful. The game is brutal enough on its own, but you

HOW TO PLAY LETHAL COMPANY SOLO



can sand down some of those rough edges with mods.



Welcome to the Lethal Company subreddit! We're a community centered around the popular horror co-op game, Lethal Company! I've played with a group and it's fun, but more often than not I play solo and I enjoy it more. I haven't played on the harder 3 moons solo yet (I think I've only played Rend in a group actually) and I'm kind



Its not undoable, about half my recorded hours are solo (though i only played 10 hours solo before i got into mods. The experience is different now) What you need to understand the very most is how to deal with each enemy type, and do so confidently.



Propain's Solo-Play Essentials Package of essential mods to enhance your single-player experience! * -
Other unnecessary mods such as Lethal Company Enhancer by Mom_Llama v1.0.3. Messed up the ReadMe big time, ???

HOW TO PLAY LETHAL COMPANY SOLO



Hey. Jester can reset to the normal box mode if all of your team is outside the facility for 5+ seconds (estimated). The best tactic would be just taking all the loot out and dragging it to the ship once you encounter the box and it starts playing, usually enough time passes for the jester to calm down and allow you to loot a bit more.



The first fully customizable client-sided Minimap mod for Lethal Company. All configurations can be managed via a user-friendly in-game GUI. Icons, such as enemies or loots, can be hidden from the map. Suitable for both solo and co-op players! Additional graphics settings such as resolution, anti-aliasing, fog quality etc.



Is Solo Play Possible in Lethal Company? Yes, you can play Lethal Company solo, but be prepared for a tough ride. This game is designed with teamwork in mind, precisely four players, where players collaborate and communicate to scavenge scrap while avoiding nightmarish creatures.

HOW TO PLAY LETHAL COMPANY SOLO



Lethal Company est un jeu o? l'entraide et le travail d"?quipe sont primordiaux. Si le jeu est jouable ? 4, certains souhaitent pouvoir y jouer avec encore plus d'amis et c'est possible avec certain mod.Pourtant, certains joueurs recherchent l'aventure en solitaire, acceptant le d?fi de naviguer seuls dans l'espace hostile.



Just want to know if solo play is a valid option, you know, just to mess around and have fun while I wait for my friends to get on. Is it viable? Or should I just stick to random lobbies while I wait? Lethal Company > General Discussions > Topic Details. Soppo. Nov 28, 2023 @ 9:04am How's solo play? Title. Just want to know if solo play is



To play Lethal Company solo, choose to host your own game instead of joining a pre-existing one. Then, switch it from a public match to friends-only to prevent other players from joining. Once you launch the game, ???

HOW TO PLAY LETHAL COMPANY SOLO



Welcome to the Lethal Company subreddit! We're a community centered around the popular horror co-op game, Lethal Company! I mostly only play on Experimentation and Assurance to avoid coilheads (I've been on numerous situation where I couldn't beat the coils solo), and thumpers can basically ruin my run if they camp the only way to some



Lethal Company is a co-op horror game where you work with another 3 players to gather loot for the Company on different moons. The game focuses on a four-player gameplay where you get four times the loot whenever ???



Lethal Company est un jeu o? l'entraide et le travail d"?quipe sont primordiaux. Si le jeu est jouable ? 4, certains souhaitent pouvoir y jouer avec encore plus d'amis et c'est possible avec certain mod.Pourtant, certains joueurs recherchent ???

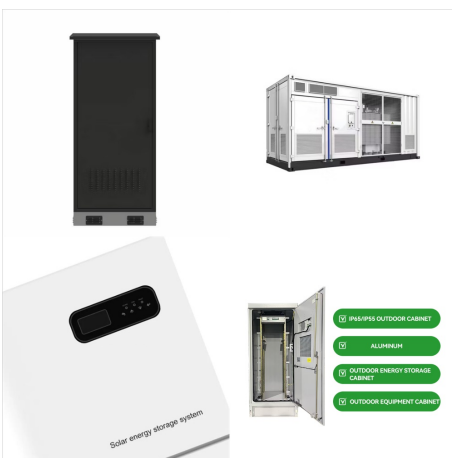
HOW TO PLAY LETHAL COMPANY SOLO



Graphics make all the difference to the gameplay, and the HD Lethal Company mod adds antialiasing, enhances the resolution, and eliminates most of the pixelated, jagged edges in the base game. This mod is perfect for players who want to experience the horrors of Lethal Company in a more HD version.

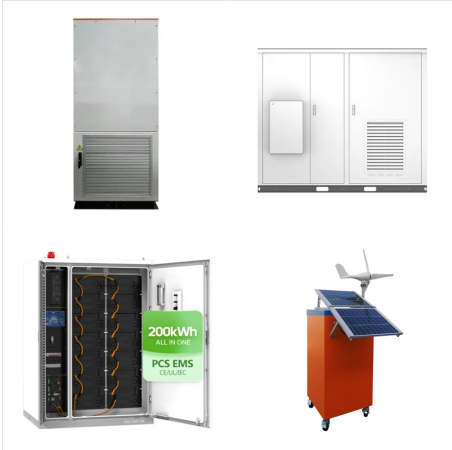


Propain's Solo-Play Essentials Package of essential mods to enhance your single-player experience! * -
Other unnecessary mods such as Lethal Company Enhancer by Mom_Llama v1.0.3. Messed up the ReadMe big time, needed to reformat- apologies!



You can play Lethal Company solo, but it's not easy. It's so not-easy that I honestly don't recommend it at all unless you really want to brag about your skills and luck. Since the game's meant to be played with multiple people, it's made exponentially easier with one player in the ship and at least one delving into scrap-laden buildings.

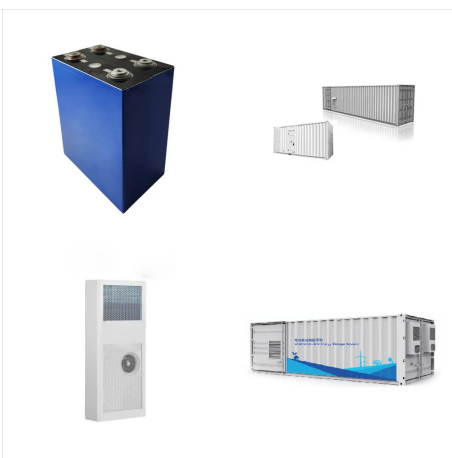
HOW TO PLAY LETHAL COMPANY SOLO



the game uses a server browser so you can see a list of the name of the lobby and how many are in it. while a microphone isn't required, like every game it greatly helps if you use one. with other players it can be really fun, especially with friends. as for solo, it can provide a hefty challenge initially but as you pick up how each map is and how various ???



For more info on how to understand and improve at Lethal Company in general, I would highly recommend checking out Wurps over on . I have learned so much from his videos, a lot of which has helped me in learning solo play and writing this guide. In particular I would recommend his Moons Tier List, Creature Guide and Navigation Guide



Lethal Company. All Discussions Screenshots Artwork Broadcasts Videos News Guides Reviews Solo play requires near mastery of the game in order to play well, even then its reaaallly hard, you can play in random lobbies though ???