

How do I Turn Off my Beats Solo 3?

In conclusion, knowing how to properly turn off your Beats Solo 3 headphones is crucial to get the most out of their battery life. By using the power button, resetting, disconnecting Bluetooth, or removing the battery, you can easily power down your Solo 3 when not in use.

Does beats solo3 wireless turn off?

The Beats Solo3 Wireless does turn off, but only if you do it manually. The headphones will also turn off if you've left them on for too long and it has depleted their battery life. Other than that, it will not turn off arbitrarily unless there are problems.

How do I Reset my Beats Solo 3 headphones?

When the LED fuel gauge lights have fully turned off, this indicates your Solo 3 headphones have shut down. You can then safely release the power button. Your headphones are now powered down through the power button method. 2. Reset Your Beats Solo 3 to Turn Them Off

How do I Pair my Beats Solo 3 wireless headphones?

Enable Bluetooth on your smartphone, then press and hold the power button on the headphones until the LED light starts flashing. On your phone, select the Beats Solo 3 from the list of available devices to complete the pairing process. What should I do if my Beats Solo 3 Wireless headphones' battery life is significantly shorter than advertised?

How do I power down my beats 3 headphones?

Here is how to power down the headset by using the power button: a. Press and Hold the Power Button
Locate the power button on the bottom of the right ear cup of your Beats 3 wireless headphones. For 5-7 seconds, press and hold the Solo Headset power button. Do not let go of the button until the headphones shut down.

How do I charge my beats solo3?

Look over your headphones' earcups and locate the power button. The Beats Solo3 has its power button right above the micro USB charging port. Remove the ear cushion on the right earcup to better access the power key. You won't need any extra tools for this since you can do it by hand.



If updating the firmware doesn't resolve the issue, it may be time to seek professional help. In the next section, we'll discuss some options for getting help with your Beats Solo 3 headphones. Tips to Prevent Beats Solo 3 from Turning off. Beats Solo 3 is undoubtedly one of the best wireless headphones in the market.



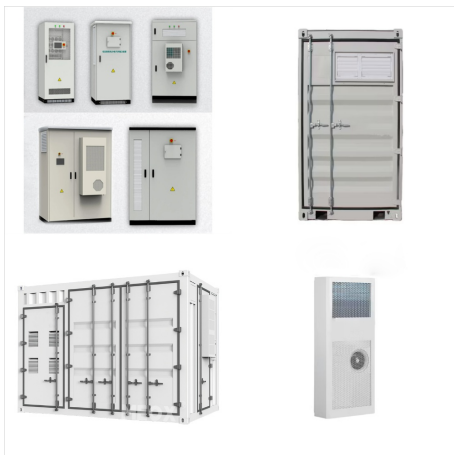
The power button in Betas Solo 3 headphones allows users to easily switch between wired and wireless listening modes, as well as turning the headphones on or off. It also has an LED indicator light which shows when the headphones are in use or charging.



However, if the problem persists, connect your Beats Solo 3 to the charger and hold down the power button for 20 seconds. Then, disconnect the charger and try powering on your Beats. If you are among them who couldn't turn off the Beats Solo 3, restart the device (steps given above) and check if the problem is fixed. Solution 3: Reset Your



To turn off your Beats Solo 3 headphones, press and hold the power button for about 1 second. You'll see the power indicator light fade out, signaling that the headphones are turning off. Is there a difference between resetting Beats Solo 3 and Beats Solo Pro? Yes, the reset process may vary between models. For Beats Solo 3, the reset is done



Power off your Beats Solo 3 headphones. Dampen a cotton swab or soft cloth with a small amount of isopropyl alcohol (70% or higher). Gently clean the charging port, being careful not to let any liquid enter the headphones. Allow the port to dry completely before attempting to charge your headphones again.



Conclusion. Understanding how to reset Beats Solo 3 Wireless headphones is crucial for troubleshooting common issues such as connectivity problems, pairing mishaps, or audio glitches. The process is straightforward and involves holding down the power button and the volume down button for 10 seconds until the LED indicator light flashes.

HOW TO POWER OFF BEATS SOLO



3



A common and effective method to turn off the Beats Solo 3 is to connect the headset with a charging cable and circulate the hardware's power supply. All you need for power cycling the Beats Solo 3 is the charging cable and adapter, as well as a functional electrical outlet. Here's how to power circulate the Beats Solo 3 easily:



To preserve the battery life of your Beats Studio 3, I usually either power my headphones off or activate the power-saving mode. Both of these actions necessitate the use of the power button, but to engage in power-saving mode, you should press the power button and the volume-down button simultaneously for 2 seconds.



1. Make sure that your Beats Solo 3 headphones are fully charged. 2. Press and hold down the power button for 10 seconds. 3. Your Beats Solo 3 headphones will now be reset and should turn off properly when you press the power button again. Update Firmware. If your Beats Solo headphones are not turning off, it may be due to a firmware issue.

HOW TO POWER OFF BEATS SOLO



3



Thanks for reaching out to the Apple Support Communities! It sounds like you're having issues turning off and connecting your Beats Solo3. Press and hold the power button for several seconds to power off. For more information about using your Beats, check out this article to Set up and use your Solo3 Wireless headphones.



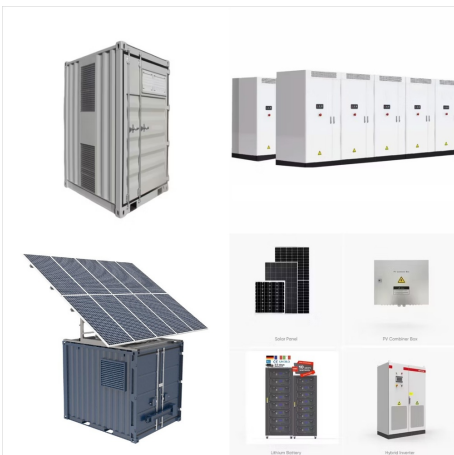
Turning off your Beats Solo 3 is a simple process once you know the various methods available. In this comprehensive guide, the HeadPhones Baba team will walk through the step-by-step instructions to power down your ???



Fold the ear cups in toward the middle of the headphones to turn them off. Unfold your headphones and wait for the light on the earphone to light up to turn them on. Charge your headphones if they don't work. If you still have trouble connecting them, try resetting them.



Beats Solo Will Not Turn On. Beats Solo3 Charge but do not power on. Beats Solo3. My Beats hinge won't snap back in place. Beats Solo3. rubber strip falling off the headband, need glue. Beats Solo3. Fixing no sound in one speaker on blueooth. Beats Solo3. See all 67 questions. iFixit. About us;



If your Beats Studio 3 won't turn off, it could be due to a temporary software glitch or a faulty power button. Try a soft reset by holding down the power and volume down buttons for 10 seconds. If the issue persists, consult ???



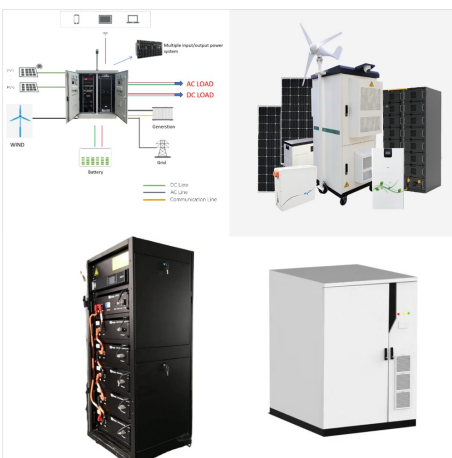
If checking the Bluetooth settings doesn't solve the problem, try restarting your Beats Solo 3. To do this, power off the headphones by holding down the power button until the LED indicator turns off. Then, power them back on by pressing the power button again. Restarting the headphones can often reset any connectivity issues and help



Power off your Beats Solo 3 headphones. Dampen a cotton swab or soft cloth with a small amount of isopropyl alcohol (70% or higher). Gently clean the charging port, being careful not to let any liquid enter the headphones. Allow ???



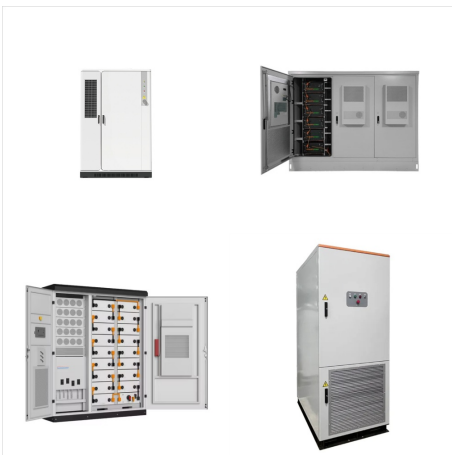
Beats Solo 3 flashing red and white might indicate a cut-off external power source. Disconnecting and reconnecting the charger can fix the problem. Here are a few tips on fixing your Beats Solo 3 wireless headphones: Restart Beats Solo 3. The Beats Solo 3 wireless headphones provide up to 40 hours of playback time.



Press and hold the Beats logo button on either earbud until you hear a chime. When you're wearing both Beats Studio Buds, Beats Studio Buds +, or Beats Fit Pro, press and hold the Beats logo button on either earbud to switch between Active Noise Cancellation and Transparency mode.



Beats Solo 3 not turning ON ??? Conclusion. In conclusion, if your Beats Solo 3 headphones are not turning on, there are a few troubleshooting methods you can try to revive them. The most common cause is a dead battery or a malfunctioning power button. To check the battery level, press the power button and see if there is any LED activity.



Step 1: Power on your Beats Solo 3. Before you can make any adjustments to the noise cancellation settings on your Beats Solo 3 headphones, you need to ensure that they are powered on and paired with your device. Follow these steps to power on your headphones: Locate the power button on your Beats Solo 3 headphones. It is usually located on one



My beats solo 3 will not turn off. I've tried resetting with the power button and volume down button. I've tried plugging in and holding power button for 20 seconds. Nothing works. We definitely want to help you power those Beats off. Is it possible you're pressing the button for too long? You'll want to make sure that you only press and



To turn off Beats Solo 3, press the power button until you see a small light indicator turning red to white. Alternatively, you can simultaneously hold power and volume buttons to turn them off. ???



Conclusion. Understanding how to reset Beats Solo 3 Wireless headphones is crucial for troubleshooting common issues such as connectivity problems, pairing mishaps, or audio glitches. The process is straightforward ???