



How to store power tool batteries?

It is advisable to store batteries in a dry environment and avoid exposing them to damp areas or water sources. **Proper Packaging:** To protect power tool batteries during storage, it is recommended to store them in their original packaging or use a dedicated battery case.

How to store a lithium battery?

When it comes to storing lithium batteries, taking the right precautions is crucial to maintain their performance and prolong their lifespan. One important consideration is the storage state of charge. It is recommended to store lithium batteries at around 50% state of charge to prevent capacity loss over time.

How do you store a cordless tool battery?

Cordless tool batteries last longer if you store them in a dry, climate-controlled area. It's best to store batteries at room temperature in the original carrying case or in a cushioned bag. Use the plastic cap that comes with your battery to stop it from shorting out and to protect the terminals from breaking or getting wet.

How do you maintain a lithium ion battery?

Here are a few tips on how to maintain your lithium-ion batteries: 1. Store them in a cool, dry place. Extreme temperatures can damage lithium-ion batteries, so it's best to store them in a temperature-controlled environment. 2. Avoid letting them discharge completely.

How do I Keep my battery-powered tools at their optimal run time?

To keep your battery-powered tools at their optimal run time, taking care of the battery is important. You'll want to keep your battery charged. Put the battery on the battery charger when you notice a decrease in power. Most batteries last longest if you recharge when they reach 70% capacity.

Can a power tool battery be damaged?

Humidity: Excessive moisture or humidity can harm power tool batteries. Moisture can seep into the battery and cause corrosion, leading to damage and reduced performance. It is advisable to store batteries in a dry environment and avoid exposing them to damp areas or water sources.

HOW TO STORE LITHIUM POWER TOOL BATTERIES



The ideal charge for Milwaukee lithium-ion battery storage is 40-60%. This effectively establishes an electron equilibrium between the positive and negative ends. Power tools and batteries don't suffer too much from cold places like the garage or shed. But if it reaches freezing temperatures, store it elsewhere. EndNote. And with that, we



Lithium-ion batteries, like the ones used in STIHL power tools, can suffer permanent damage if they get too cold. Firstly, lithium-ion batteries are best stored at half charge. Keep this in mind when you're using your cordless ???



Cordless tool batteries last longer if you store them in a dry, climate-controlled area. Some manufacturers suggest 30%-50% charge for lithium-ion batteries. But it's best to store most rechargeable batteries at about 40%-50% charge. Battery storage with a partial charge prevents stress on the battery from being fully charged and avoids

HOW TO STORE LITHIUM POWER TOOL BATTERIES



Store the power tool at low, frost-free temperatures. Avoid storage in direct sunlight and damp conditions. Further information on the storage temperature for your power tool is available in the instruction manual. For ???



Improperly stored batteries can become damaged batteries, and damaged lithium batteries have the potential to overheat, catch fire, or explode. That's how much proper storage matters. In fact, let's get into the risks of lithium batteries a little more.



Storing lithium ion batteries correctly: A checklist for proper lithium-ion battery storage. Every STIHL battery power tool uses a cutting-edge lithium-ion battery because it is lightweight and quiet, but also offers high ???

HOW TO STORE LITHIUM POWER TOOL BATTERIES



If you follow our advice, then you will extend the life of your battery. The Basics of How to Store Cordless Drill Batteries. Most of us know there are different kinds of batteries. Lithium-Ion (Li-Ion) batteries are the newest major variety of batteries and ???

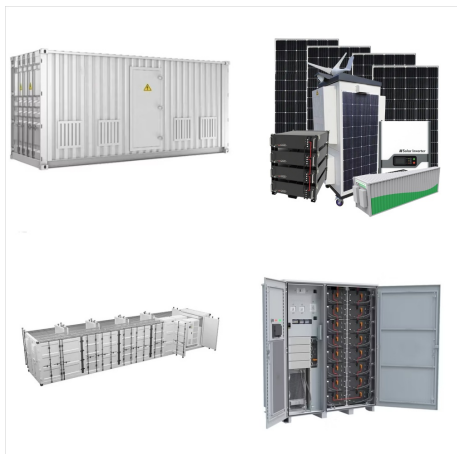


Storing lithium ion batteries correctly: A checklist for proper lithium-ion battery storage. Every STIHL battery power tool uses a cutting-edge lithium-ion battery because it is lightweight and quiet, but also offers high energy and power density. They have a long lifespan, but will nonetheless need to be replaced eventually.



Safe Handling and Use of Li-Ion Batteries for Power Tools. For many years, the chemistry used in power tool batteries was commonly nickel metal hydride (Ni-MH) and nickel cadmium (Ni-Cd). Use and store your battery within the temperature limits stated by the manufacturer. Do not store in a closed location where sunlight may cause elevated

HOW TO STORE LITHIUM POWER TOOL BATTERIES



Find out how to charge and store lithium-ion batteries and understand the memory effect. Find a Dealer. Search. Learn the right way to store your tool batteries, care tips to remember when storing and using cordless power tools, and much more. We've also got advice on the right maintenance to preserve your battery's service life.



The newest type of power tool battery is the Lithium-ion battery. A good thing to note is Lithium, as compared to Lithium-Ion, is not a rechargeable type. Storage. The Lithium-Ion batteries should be stored at 30%-50% maximum charge for the best results. How to tell the Power level in my Battery Pack?



Nickel and lithium-ion batteries should be stored at around 40% state of charge. Lithium-ion batteries might become unstable if not stored at their proper levels. Be sure to know the specifics unique to YOUR battery. To ignore such information that could prove devastating.

HOW TO STORE LITHIUM POWER TOOL BATTERIES



Store tool in a dry, secure place out of reach of children and other unauthorized users. Store the activation key separately away from the tool and out of reach of children and other unauthorized users. For maximum battery life, store the battery at an ambient temperature between 50° F and 68° F with a charge between 40% and 60% (2 green LEDs



Key Takeaways: Proper storage and maintenance of power tool batteries are essential for maximizing their lifespan and performance. By following recommended storage techniques, considering temperature and humidity, and ???



The dangers and risks of lithium-ion batteries and how to safely store, charge, and transport them. Subscribe; Magazine; Advertise; Search. Search. handheld power tool batteries have less energy than a forklift battery but a facility with hundreds of hand tools has more potential risk than a facility with only a few rechargeable tools.

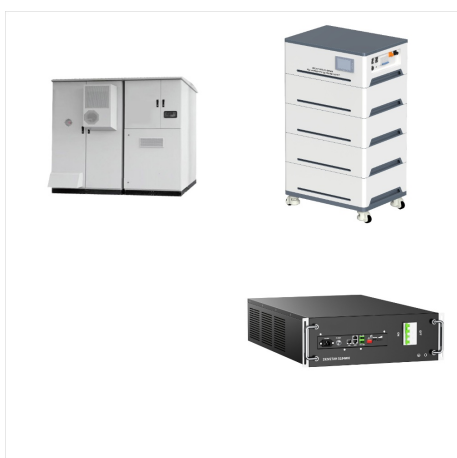
HOW TO STORE LITHIUM POWER TOOL BATTERIES



Discover a variety of power tool batteries for sale at Battery Mart. Here you'll find the perfect replacement power tool battery for a great price, including brands like Black & Decker, DeWalt, Craftsman, and more. Replacement Hitachi EBM 315 Lithium Power Tool Battery (3.6V, 1.5Ah, Li-Ion)
Replacement Hitachi EBM 315 Lithium Power Tool



Checklist: Lithium-ion battery storage. Every STIHL cordless power tool uses a cutting-edge lithium-ion battery because it is lightweight and quiet, but also offers high energy and power density. They have a long lifespan, ???



The lithium-ion batteries that are in our power tools have been tested and found to be very safe. Lithium-ion refers to the chemistry used to make the batteries, but there is not only one way to formulate that chemistry or to assemble the various components in a battery to generate electricity.

HOW TO STORE LITHIUM POWER TOOL BATTERIES



What are Cordless Drill Batteries? Cordless drill batteries are rechargeable power sources used in cordless drills and other power tools. They are typically lithium-ion (Li-ion), nickel-cadmium (NiCd), or nickel-metal hydride (NiMH) batteries, each with its own characteristics and maintenance requirements.



Neglecting these batteries can lead to damage, reduced performance, and a decrease in the overall lifespan of your cordless drill. In this blog, we'll explain the importance of storing cordless drill batteries safely and efficiently to ensure your power tool works to the best of its abilities and lasts for years.. Step 1: Remove the battery from the drill



Yes, it is generally safe to store lithium-ion batteries in the house. However, take precautions such as avoiding extreme temperatures, preventing physical damage, and using fireproof containers for an added layer of safety.

HOW TO STORE LITHIUM POWER TOOL BATTERIES



Proper storage of tools with an integrated battery. A power tool with integrated battery, such as those in the STIHL AI Battery System, needs to be treated differently from other cordless tools as you cannot remove the battery for storage purposes. Lithium-ion battery storage preparation for these tools is simple:



Ensure proper air circulation in your storage area to prevent heat buildup. If possible, store batteries in a climate-controlled room or cabinet. Maintaining these conditions is crucial when learning how to store lithium batteries for long periods. It's the best way to store lithium batteries to preserve their capacity and prevent premature aging.



It's best to store batteries at room temperature in the original carrying case or in a cushioned bag. Use the plastic cap that comes with your battery to stop it from shorting out and to protect the terminals from breaking ???

HOW TO STORE LITHIUM POWER TOOL BATTERIES



Tips for Lithium-ion Battery Storage: Temperature and Charge Temperature is vital for understanding how to store lithium batteries. The recommended storage temperature for most is 59° F (15° C)???but that's not the case across the board. So, before storing lithium batteries, thoroughly read labels on proper storage for your specific battery



Although most Lithium-Ion batteries will perform well for 2-3 years, if you want to extend your battery life, you can see following a few tips. First, before storing your battery, make sure it's not empty. Over time, batteries will leak power, so if it's stored at no charge in it, there's a chance it won't accept a charge again.



Maintenance of Cordless Drill Batteries. To ensure your cordless drill batteries last for a longer time and work efficiently, proper maintenance is essential. Here are some tips for maintaining your cordless drill batteries: Charge Regularly: It is important to charge your cordless drill batteries regularly to ensure they don't run out of power. . Batteries should be recharged ???

HOW TO STORE LITHIUM POWER TOOL BATTERIES



To store your cordless drill batteries, it is important to charge it up well, store in a dry location, avoid metal storage, extreme temperatures, and moisture, and store in a case. Many projects around the house can use these drills and take proper care of it, and the battery that helps power the drill will help this tool last for longer



During the summer, I store my batteries in my garage shop and try not to leave them in my car if I need to take them elsewhere. If your shop gets extremely hot, you may want to store your batteries someplace cooler. During the winter, I store my batteries inside my house and don't leave them in the garage or in my car to prevent them from freezing.



How do you store lithium ion batteries for power tools? It is important to store lithium ion batteries for your power tools correctly in order to ensure the longevity of your battery and keep it in good condition. There are a few steps you can take to store your lithium ion batteries correctly: 1.

HOW TO STORE LITHIUM POWER TOOL BATTERIES



The garage is probably the most common place to store any type of power tool battery, including lithium-ion batteries. Should You Store Batteries in the Power Tool? In general, you should avoid storing the batteries in the power tool while they are not in use. This may vary for different models, so check your owner's manual.