



Can you use a power transfer switch on a solar inverter?

It's important that we keep them topped off. Until we completely disconnect from the grid, we can use the power transfer switch to alternate from grid power to solar power. We've been running our fridge, freezer, and computers off of solar power via a drop cord connected to the inverter.

How does a solar transfer switch work?

Solar ATS are typically installed so they connect to the grid, inverter, solar battery, and the load. When battery power goes down, the solar transfer switch will automatically connect your appliances to the grid. This ensures your electrical system continues to operate even when there is no solar power available.

What is a solar automatic transfer switch?

A solar automatic transfer switch is a type of self-acting switch that is specifically designed for use with a solar power system. Solar ATS are typically installed so they connect to the grid, inverter, solar battery, and the load. When battery power goes down, the solar transfer switch will automatically connect your appliances to the grid.

How do you connect a transfer switch to an inverter?

The transfer switch was hooked up to the breaker box, and installed right next to it on the wall. That yellow cord connects the transfer switch to the inverter. Tim, the electrician, who is quite a character and whom we thoroughly enjoy having work on our stuff, did all of the wiring, so I can't give you any of the specifics as far as that goes.

What is a power transfer switch?

If you're new to the transfer switch, here's what it is: A power transfer switch is an electrical device used to safely connect or disconnect a load from its primary power source to another. In the case of a solar system, the load is the home or business that the solar array is powering and the alternate power source is the grid or grid generator.

What is a grid-tie solar transfer switch?

A grid-tie solar transfer switch is specifically used with a grid-tied solar power system. That means it allows

# HOW TO WIRE UP A TRANSFER SWITCH WITH SOLAR INVERTER



your system to draw power from the grid when necessary, such as during bad weather. These solar transfer switches are typically mounted between the utility meter and the solar inverter.



In the absence of ac SP, the transfer switch switches to the inverter, and from there, there are a variety of ways the current flows depending on which ac Circuits you want hot. If your inverter is really a hybrid inverter/charger it's different. In the absence of ac SP, the inverter is on (unless you turn it off). In the presence of ac SP, the



The EG4 6500EX and 6000EX are set up to wire into your main panel. But I want to connect my unit to a Transfer Switch that has the Nema L14 / 30 amp connector. How do you wire an EG4 6500 to that switch? I would need to have a female Nema L14 connector on the other end of the wire in order to plug into the transfer switch.



Yes, before you connect the generator to the solar inverter, ensure the solar inverter is turned off so there are no problems during the setup process. Follow the instructions given by the solar inverter manufacturer and the generator in the letter. So that everything works together and is safe to use. Carefully follow the directions for

# HOW TO WIRE UP A TRANSFER SWITCH WITH SOLAR INVERTER



How to do Manual & Auto UPS / Inverter Wiring with Changeover / ATS Switch. In our previous UPS / Inverter wiring diagrams & connections for home, we show that how to wire and connect an automatic UPS and batteries to the home distribution board for continues power supply. In today UPS / Inverter installation tutorial, we will show how to connect and install the battery backup ???



A transfer switch allows you to seamlessly switch between grid power and generator power. It ensures that your appliances remain powered during a grid outage and that the generator only powers your appliances when ???

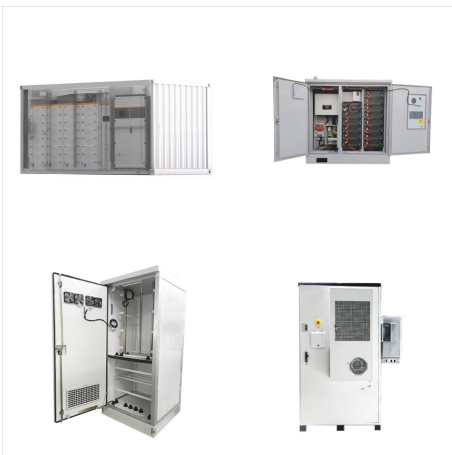


How to do Manual & Auto UPS / Inverter Wiring with Changeover / ATS Switch. In our previous UPS / Inverter wiring diagrams & connections for home, we show that how to wire and connect an automatic UPS and batteries to the home ???

# HOW TO WIRE UP A TRANSFER SWITCH WITH SOLAR INVERTER



Anastasia Graham. I'm so glad I found this MOES Smart Automatic Transfer Switch! It's been a lifesaver for my off-grid solar wind system. The switch automatically senses when the battery voltage is low and switches to grid power to protect my battery, and then switches back to inverter power when the battery voltage is high enough.



Step 2: Wire Automatic Transfer Switch. The next step is to wire the automatic transfer switch. This can be a delicate task because you're dealing with electrical wiring and high voltages. If you're not comfortable with this task, you should hire a professional electrician. The automatic transfer switch wiring diagram that comes with the



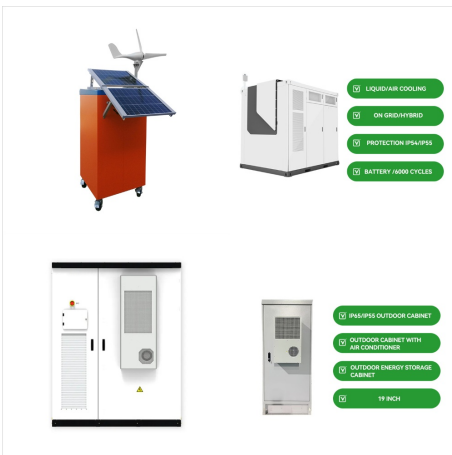
GPTS-30 amp automatic transfer switch. I want to make this application idiot proof. So, plug in shore power (small generator to charge up batteries while boon docking, or powering up at home to charge batteries before our trip) I've got power. When out camping, flip the inverter switch and my outlets have power.



# HOW TO WIRE UP A TRANSFER SWITCH WITH SOLAR INVERTER



It allows you to power essential circuits during an outage by simply flipping a switch. Types of Transfer Switches. There are two main types of transfer switches: Manual transfer switches: These require you to manually switch between utility and generator power. Automatic transfer switches: These detect power outages and automatically switch to

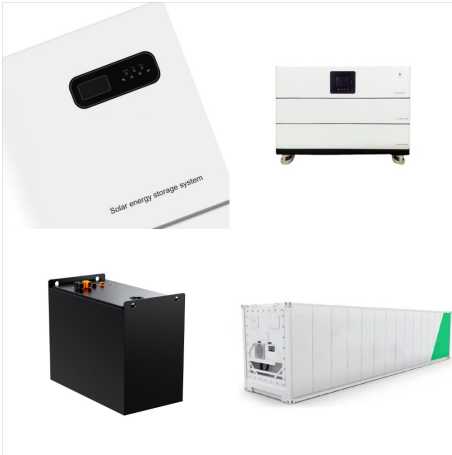


I am looking to add a manual transfer switch before my main panel so I can back feed power to my whole home in the event of a power outage. The 200A utility would connect to the switch, which would then connect to my main panel, and to my Sol Ark 15k. By default I would have the switch pointing to the inverter, passing through 200A to my main

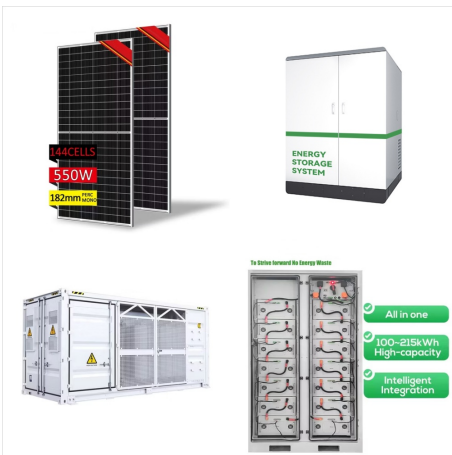


Manual and Automatic Transfer and Changeover Switch Wiring & Connection. In our step by step electrical wiring installation tutorials series, We will show how to wire and connect single phase and three phase automatic and manual changeover and transfer switches to the home distribution board and main panel to use the backup power supply such as batteries power with UPS and ???

# HOW TO WIRE UP A TRANSFER SWITCH WITH SOLAR INVERTER



Powerwall & Generators. Powerwall can be added to a system with a backup generator connected with an external Automatic Transfer Switch (ATS) or a Manual Transfer Switch (MTS).. The Powerwall system is installed between the utility meter and the generator transfer switch and can charge from solar while the grid is operational and when the grid is down during an outage.



Solar Inverter Wiring Diagram: For boats with a solar power system, a solar inverter wiring diagram clarifies the integration of the solar panels, charge controller, battery bank, and inverter. It highlights the optimal wiring configuration to harness solar energy efficiently and convert it to usable AC power.



Put a 30 amp breaker in your main panel. Run that to a 30Amp transfer switch (half the price of a 50 amp). Bring the power from the inverter into the transfer switch. And take the output of the transfer switch to a sub panel. Move the loads you plan to power on the inverter out of the main panel and put them into the sub panel.

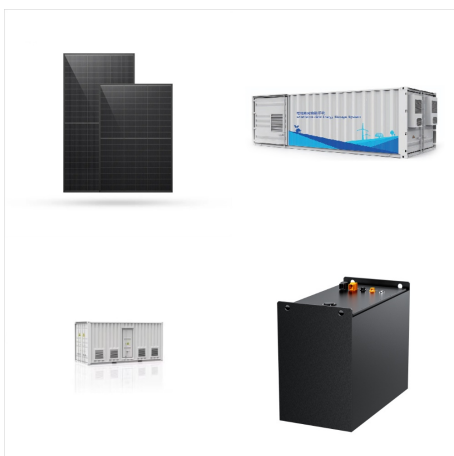
# HOW TO WIRE UP A TRANSFER SWITCH WITH SOLAR INVERTER



If three sources are on the RV, then two switches would be required. Here are some examples of different ways to wire a TS-30 transfer switch. #1 TS-#30 Switching between Shore power and generator #2 TS-30 Between Inverter and Shore Power . TS-30 with inverter, shore and generator requiring two Transfer switches



W Inverter: 12 AWG wire; 2000W Inverter: 10 AWG wire; 3000W Inverter: 8 AWG wire; Branch Circuit. No matter the size of your inverter, we recommend connecting the circuit breaker box to each power outlet with 12 AWG wire. IMPORTANT: To ensure electrical safety, we recommend wiring each circuit breaker to only one pair of power outlets.



The grid-tie inverter sees the voltage and frequency from the battery-based inverter and is somewhat "tricked" into thinking that the grid is still active which results in the solar array being able to produce power and cover the critical loads and charge the batteries.

# HOW TO WIRE UP A TRANSFER SWITCH WITH SOLAR INVERTER



Locate the black wire from the same transfer switch circuit, and twist it together with the old feed wire, using a yellow wire connector. Tuck the wires neatly out of the way at the edges of the box. The next step up is to incorporate a manual transfer switch for your portable generator. Transfer switches are permanently hardwired to your



If you're looking to wire a changeover switch, or an automatic transfer switch, in your electrical system, it's important to understand the process and the safety measures involved. A changeover switch is a device that allows you to switch between two power sources, such as a main power supply and a backup generator, with ease and convenience.



I don't power any circuits from the Ecoflow DP via the transfer switch while the smart AC switch is on as that would create a second neutral bond to ground. It's a timing approach that I use to supply power from the EcoFlow to my critical circuits tied to the transfer switch while still receiving power from the grid for the other circuits.



# HOW TO WIRE UP A TRANSFER SWITCH WITH SOLAR INVERTER



Different Configurations for Solar Panel Wiring Diagrams. Traditional residential solar panel systems use a string inverter: multiple PV modules are connected to one another and then to a solar inverter or charge controller. Solar panels with built-in inverters on each unit ??? also known as microinverters ??? are a relatively recent innovation