

What is IBM Cloud Management Console for power systems Secure Cloud Connector?

Configuring IBM Cloud Management Console for Power Systems for connecting to the platform Secure Cloud Connector provides security between the HMC in your data center and the CMC instance. Secure Cloud Connector verifies the identity of your CMC instance and provides end-to-end encryption between the instance and the HMC in your data center.

How can IBM help you manage your power systems cloud infrastructure?

Learn how IBM can help you manage your Power Systems cloud infrastructure using the Cloud Management Console. IBM Power Private Cloud with Shared Utility Capacity provides organizations with the business continuity and security that they have come to rely upon from Power with cloud-like agility and flexibility.

What is IBM Power® Enterprise pools 2.0?

Power® Enterprise Pools 2.0 is renamed as IBM Power Systems Private Cloud with Shared Utility Capacity. In CMC, IBM Power Systems Private Cloud with Shared Utility Capacity is referred to as Power Enterprise Pools 2.0 or Enterprise Pools 2.0.

What is IBM Power Private Cloud Edition?

IBM Power Private Cloud Edition provides cost-effective bundles of compelling software offerings that enable you to seamlessly deploy and manage private clouds, simplify your management of security and compliance, and ensure high availability.

Which hardware management consoles must have NTP enabled?

All Hardware Management Consoles that manage IBM Power systems servers within a Power Enterprise Pool 2.0 must have Network Time Protocol (NTP) enabled. Performance and Capacity Monitoring (PCM) must be enabled for each IBM Power systems server in a Power Enterprise Pool 2.0 through the HMC.

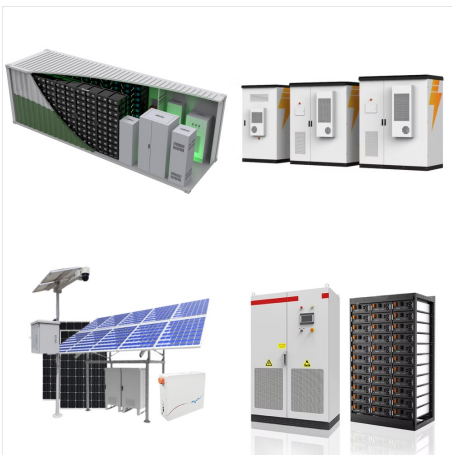
What is IBM virtualization & cloud management?

An advanced virtualization and cloud management offering. A security and compliance solution optimized for virtualized environments on IBM Power servers, running AIX® or Linux. Runs as a service hosted in the IBM cloud, freeing organizations from maintaining software to monitor infrastructure.

IBM CLOUD MANAGEMENT CONSOLE FOR POWER SYSTEMS



ITM V6.3 licenses are included with AIX Enterprise and Cloud Editions. However, it can also be ordered as a separate product. IBM Cloud Management Console for Power Systems. IBM Cloud Management Console for Power Systems (CMC) is unique in the sense that it is a monitoring solution running in the cloud.



The management of users is reserved for the administrator user from the organization that is registered for IBM(R) Cloud Management Console for Power Systems??? services. If you have a valid ID and you are registered as the administrator user for your organization in the IBM Cloud Management Console for Power Systems portal, you can add users



IBM Marketplace - IBM Cloud Management Console; IBM Redbooks - IBM Power Systems Private Cloud with Shared Utility Capacity featuring Power Enterprise Pools 2.0; Cloud Management Console (CMC) portal support. The ESS Support team does not provide troubleshooting, support, or help for the Cloud Management Console (CMC) application.

IBM CLOUD MANAGEMENT CONSOLE FOR POWER SYSTEMS



IBM PowerVC, an Infrastructure as a Service (IaaS) enabling software, provides a self-service cloud console for managing IBM Power Systems. It is built on OpenStack. OpenStack is a collection of open-source software projects that enterprises can use to ???



A security and compliance solution optimized for virtualized environments on IBM Power servers, running AIX(R) or Linux. IBM(R) Cloud Management Console Runs as a service hosted in the IBM cloud, freeing organizations from maintaining software to monitor infrastructure.



Access the IBM Cloud Management Console and create a Power Enterprise Pool 2.0 using the pool ID received on the IBM ESS website when the pool was started and assign other Power Systems to it. All processor and memory resources are then activated on all Power Systems in the pool, and CMC begins monitoring the pool.

IBM CLOUD MANAGEMENT CONSOLE FOR POWER SYSTEMS



??? IBM Cloud Management Console with HMC monitors minutes of resource use that exceed the pool's Base capacity ?With Cloud Management Console V1.20, clients may now deploy a mix of 2 -socket scale-out Power systems with processors requiring P10, P20 and/or P30 tiers of IBM i license entitlement within the same pool without having to



The system is not in a Power enterprise pool 1.0. The system has not been reserved for another Enterprise Pool 2.0 in ESS. If a system cannot be selected, Get Started with IBM Cloud Management Console for Power Systems; Power Enterprise ???



The IBM(R) Hardware Management Console (HMC) provides systems administrators a tool for planning, deploying, and managing IBM Power Systems??? servers. This IBM Redbooks(R) publication is an extension of IBM Power Systems HMC Implementation and Usage Guide,

IBM CLOUD MANAGEMENT CONSOLE FOR POWER SYSTEMS



Thus, you can connect any combination of systems as long as the total number of system sockets does not exceed the total number of subscribed sockets. Purchasing and renewing CMC subscription. The subscription for IBM Cloud Management Console is activated per system and is based on the number of sockets that are associated with each system.



IBM(R) Cloud Management Console berjalan sebagai layanan yang dihosting di IBM Cloud, sehingga organisasi tidak perlu lagi memelihara perangkat lunak untuk memonitor infrastruktur. Tampilan dinamis kinerja, inventaris, dan pencatatan untuk perusahaan IBM(R) Power(R) Anda yang lengkap, baik di lokasi maupun di luar lokasi, menyederhanakan dan



Cloud-based services and management tools include the following: Infrastructure-as-a-Service (IaaS) is for on-demand access to cloud-hosted physical and virtual servers, storage, and networking comprising the backend IT infrastructure for running applications and workloads in the cloud. Platform-as-a-Service (PaaS) is for on-demand access to a complete, ready-to-use, ???

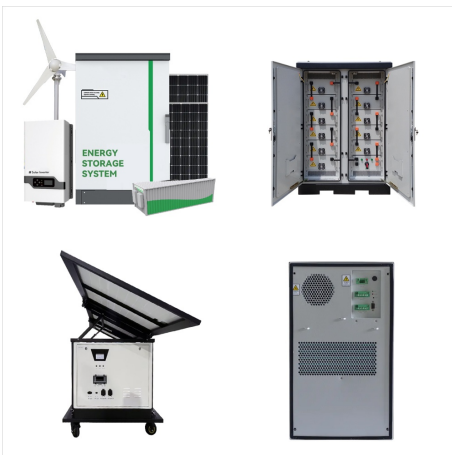
IBM CLOUD MANAGEMENT CONSOLE FOR POWER SYSTEMS



IBM Power Private Cloud with Share Utility Capacity provides fully active standby, pay-per-use capacity that is metered by the minute. Real-time and historical usage monitoring and analysis may be done by the Cloud Management Console. Read the white paper Entitled Systems Support for Power Enterprise Pools documentation

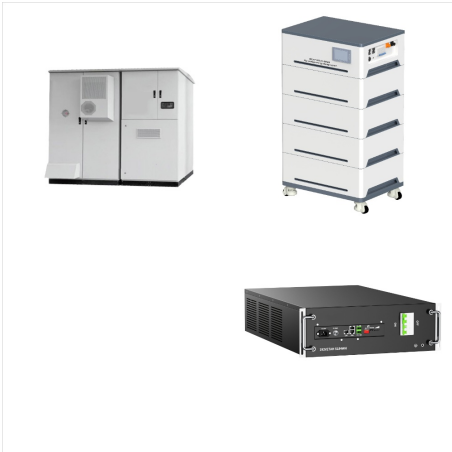


Planilha de dados IBM Cloud Management Console on Power Systems Data Saiba como a IBM pode ajudar a gerenciar sua infraestrutura de nuvem do Power Systems usando o Cloud Management Console. Produtos relacionados Utilit?rio Compartilhado O IBM Power Private Cloud with Shared Utility Capacity oferece ?s organiza??es a continuidade de

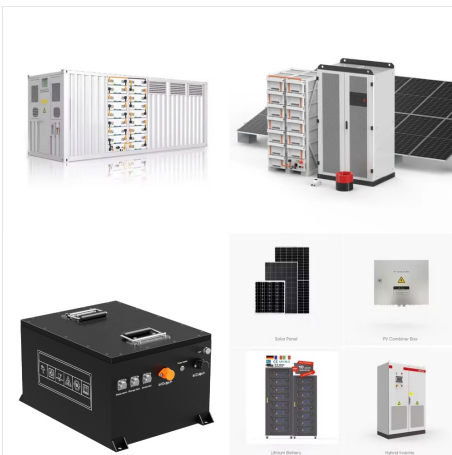


The IBM Power Systems cloud offerings can be broken down into five distinct layers (also see the first figure, Figure 1): Hypervisors; are described in the IBM Redbooks publication IBM Power Systems Hardware Management Console Version 8 Release 8.1.0 Enhancements, SG24-8232. The Integrated Virtualization Manager (IVM) is a simplified

IBM CLOUD MANAGEMENT CONSOLE FOR POWER SYSTEMS



Entitled systems support; Shopz; Documentation. Getting Started; IBM Documentation; Support Guide; Support Site Documentation; Use Cases - IBM Redbooks; Forums; Cases. Open a case; View your cases; View your case templates; IBM Business Partner cases; Monitoring. Hardware: Call Home Connect Cloud; Manage inventory - Entitled Systems Support



This IBM(R) Redbooks(R) publication is a guide to IBM Power Systems Private Cloud with Shared Utility Capacity featuring Power Enterprise Pools (PEP) 2.0. Configuration and management Chapter 4. Migrating Power Enterprise Pools from Version 1.0 to Version 2.0 Chapter 5. Use cases and sizing examples



IBM Power Systems and IBM Storage Technical University IBM Cloud Management Console for Power Systems S. Ashok sashok@us.ibm . Please note ??? IBM's statements regarding its plans, directions, and intent are subject to change or ???

IBM CLOUD MANAGEMENT CONSOLE FOR POWER SYSTEMS



IBM Hardware Management Console (vHMC) se utiliza para configurar y controlar uno o m?s servidores Power. Replant?ese c?mo se mueven los datos, las aplicaciones y los servicios en un entorno cloud h?brido. Con Power Systems basado en IBM POWER 10, podr? escalar din?micamente la capacidad inform?tica y la memoria bajo demanda y crear



Power Enterprise Pools 2.0 - Cloud Management Console - How does subscription and entitlement work. IBM offers two types of Cloud Management Console (CMC) subscriptions: direct - where the number of subscription sockets and their duration is directly stated on the order - product IDs 57xx-CMT / 57xx-CMC (Cloud Management Console subscriptions)

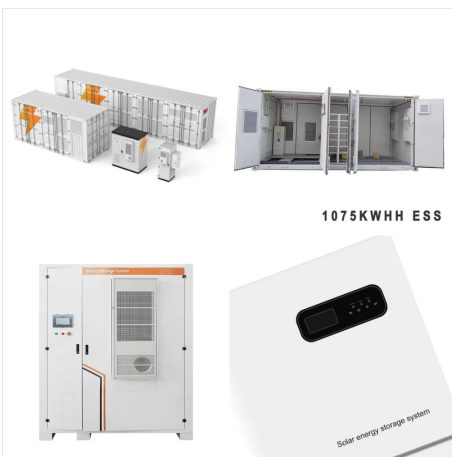


Since its release, IBM Cloud Management Console (CMC) gives insight into Power Systems infrastructure by using cloud-native apps with no additional software or infrastructure setup. Power Private Cloud with Shared Utility / Power Enterprise Pools 2.0 enables deploying a Power Private Cloud system Infrastructure with shared utility capacity

IBM CLOUD MANAGEMENT CONSOLE FOR POWER SYSTEMS



With Ansible you can automate almost anything: code deployment, network configuration, server infrastructure deployment, security and patch management, and cloud management. Ansible is implemented in an easy to use and human readable language (YAML) and uses SSH to connect to the managed systems, hence with no agents to install on remote ???



IBM Power Systems Enterprise Cloud Edition and IBM Power Systems Enterprise Cloud Edition with AIX 7.2 offer a simplified purchasing model Table of contents ??? IBM Cloud Management Console (36-month term) Power Systems Enterprise Cloud Edition with AIX, for clients running the AIX operating system in their environment, includes: