



The Idaho Governor's Office of Energy and Mineral Resources (OEMR) is responsible for coordinating energy and mineral resource planning and policy development for the State. OEMR works with state and federal stakeholders to develop and utilize Idaho's energy and mineral resources in an efficient, effective, and responsible manner that serves to enhance the ???



? Reliably power your home using a combination of renewable energy sources. DOE Office of Nuclear Energy; DOE Idaho Operations Office; Battelle; Facebook Twitter Instagram Linkedin Pinterest Flickr. Idaho National Laboratory 1955 N. Fremont Ave. Idaho Falls, ID 83415 866-495-7440.



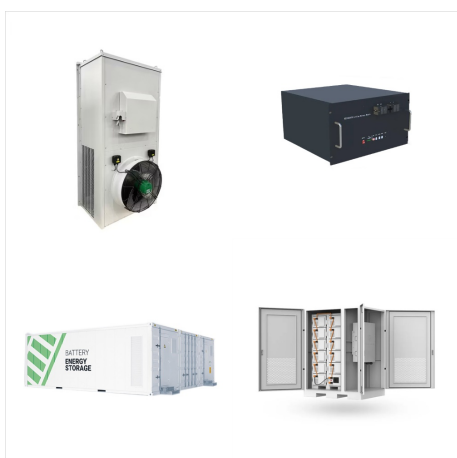
Geothermal Energy Association (GEA) (U.S. Department of Energy), Troy Gagliano (Renewable Northwest Project), Karl Gawell (Geothermal Energy Association), Virginia Gillerman (Idaho Geological Survey), Doug (Idaho Energy Resources Authority), Mel Wisenor (Land Division LLC), Kermit Witherbee (Bureau of Land Management) 4



Idaho, known as the Gem State, is rich in silver, gold, cobalt, and many other minerals, but the state has few fossil fuel reserves. 1,2,3,4 Idaho's energy potential lies in its substantial renewable energy resources, including hydropower, wind, solar, biomass, and geothermal. 5 Because of the state's northerly latitude and its location in the interior of North ???



Renewable Energy in Idaho Falls, ID. See BBB rating, reviews, complaints, & more. Renewable Energy. At-a-glance. Contact Information. International Association of Better Business Bureaus



March 10th, 2023 2pm. Moderator: Dr. Kathy Ara?jo, Director, CAES Energy Policy Institute, and Professor of Sustainable Energy Systems, Innovation and Policy Daniel Cardenas, CEO and Chairman, National Tribal Energy Association, and American Indian Infrastructure Association, as well as a Member of the Hammawi Band of the Pit River Tribe; Joseph McNeil, ; General ???



The Idaho Governor's Office of Energy and Mineral Resources (OEMR) is responsible for coordinating energy and mineral resource planning and policy development for the State. OEMR works with state and federal stakeholders to develop and utilize Idaho's energy and mineral resources in an efficient, effective, and responsible manner that serves to enhance the ???



Idaho solar installers are among the busiest in the country and the state ranks fourth in the country for solar output according to the Solar Energy Industries Association. In 2010 Idaho installed over 54 megawatts of solar power, more than doubling the ???



The Idaho Governor's Office of Energy and Mineral Resources (OEMR) is responsible for coordinating energy and mineral resource planning and policy development for the State. OEMR works with state and federal stakeholders to develop and utilize Idaho's energy and mineral resources in an efficient, effective, and responsible manner that serves to enhance the ???



Idaho's many rivers provide a tremendous source of renewable electric power. With over 140 existing hydroelectric plants having a combined generating capacity of approximately 2,700 MW, Idaho has some of the greatest hydroelectric power resources in the country. In 2021, hydroelectric facilities supplied 51% of the total in-state electricity generation, contributing ???

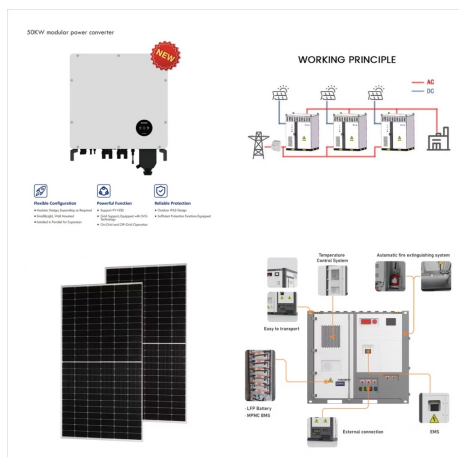


The Idaho Governor's Office of Energy and Mineral Resources (OEMR) is responsible for coordinating energy and mineral resource planning and policy development for the State. OEMR works with state and federal stakeholders to develop and utilize Idaho's energy and mineral resources in an efficient, effective, and responsible manner that serves to enhance the ???



Wind energy growth in Europe has been so strong that the European Wind Energy Association has raised its goal for the region by 50%, from 40,000 MW of installed capacity by 2010 to 60,000 MW, enough to meet two-thirds of California's electricity demand.

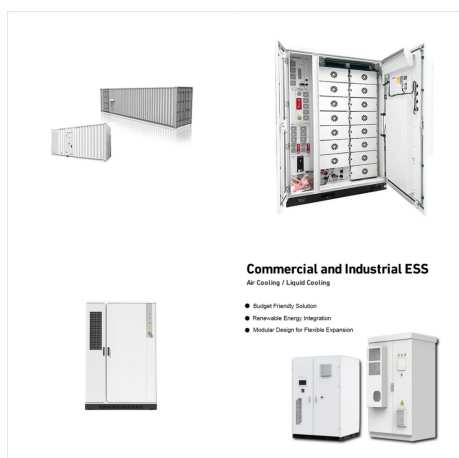




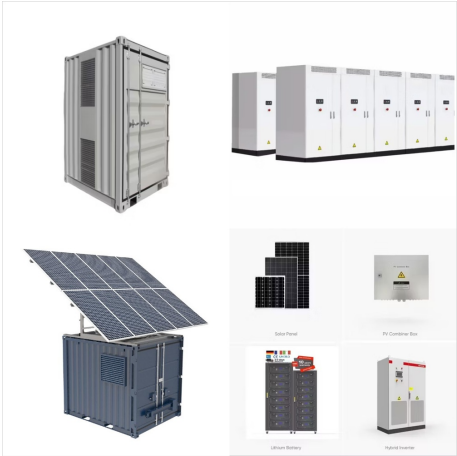
The Idaho Governor's Office of Energy and Mineral Resources (OEMR) is responsible for coordinating energy and mineral resource planning and policy development for the State. OEMR works with state and federal stakeholders to develop and utilize Idaho's energy and mineral resources in an efficient, effective, and responsible manner that serves to enhance the ???



energy efficiency measures and renewable energy production; and (iii) otherwise place vague or onerous conditions on activities conducted in private lots. The Idaho and Montana Chapters of the U.S. Green Building Council, through contributions from the Bullitt Foundation and the support of various organizations that



? Its integration with the geothermal plant is being analyzed with the help of the U.S. Department of Energy's Idaho National Laboratory and National Renewable Energy Laboratory. Just as renewable energy sources like wind and solar experience fluctuations in power output, so too does geothermal energy ??? a perhaps surprising fact given that



The State of Idaho became involved in the WPA program in 2001 when the Idaho Department of Water Resources ??? Energy Division, INL, and others began forming the Idaho State Wind Working Group. Idaho's involvement with WPA progressed quickly and anemometers from the loan program were installed in 2001 on the Duck Valley and Fort Hall Native