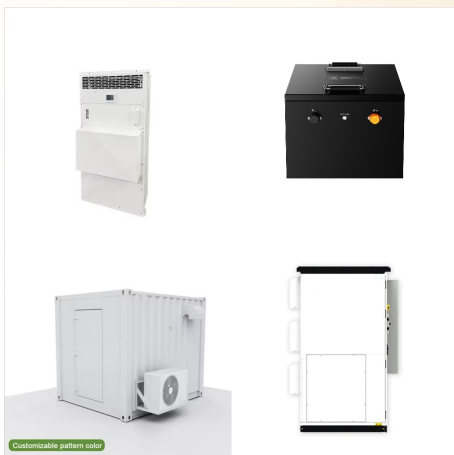
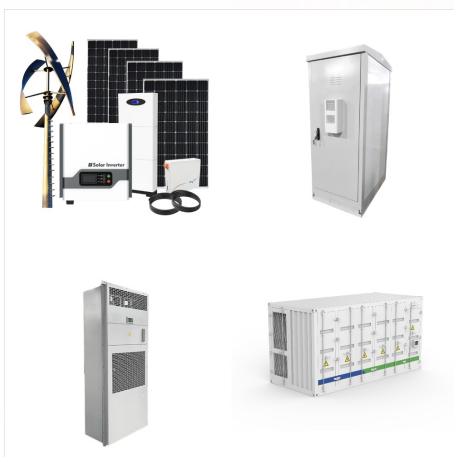




When the Lava Ridge Wind Project in south-central Idaho was proposed in 2018, it was the only renewable energy application received by BLM Idaho. Today, the BLM Boise and Twin Falls Districts are in the process of consulting with on several potential renewable energy projects on ???



Welcome to the U.S. Department of Energy Idaho Operations Office We are pleased that you have chosen to visit our Internet site and encourage you to explore the information provided. You may also contact us directly if you have further information needs or interests that are not covered in this web site.



The Idaho Governor's Office of Energy and Mineral Resources offers low interest energy loans up to \$15,000 to Idaho citizens and up to \$100,000 to Idaho businesses who are interested in installing energy efficient products and developing renewable energy projects within the state.



B. Levy of tax on wind energy, solar energy or geothermal energy electrical production. (1) A wind energy tax or a geothermal energy tax shall be levied against every producer of electricity by means of wind energy or geothermal energy in the amount of three percent (3%) of such producer's gross wind energy earnings or geothermal energy earnings.



The Idaho Governor's Office of Energy and Mineral Resources (OEMR) is responsible for coordinating energy and mineral resource planning and policy development for the State. OEMR works with state and federal stakeholders to develop and utilize Idaho's energy and mineral resources in an efficient, effective, and responsible manner that serves to enhance the ???



BOISE, Idaho, Dec. 15, 2022 ??? USDA Rural Development Idaho State Director Rudy Soto today announced USDA is investing in 12 renewable energy projects in Idaho totaling \$539,624. These projects will lower energy costs, expand access to clean energy, and combat climate change. "Through partnering with USDA Rural Development, Idaho farmers and small business owners ???



BOISE, Idaho, August 24, 2022 ??? U.S. Department of Agriculture (USDA) Rural Development Director for Idaho Rudy Soto today announced that the U.S. Department of Agriculture (USDA) is investing \$92,140 in grants to combat climate change across rural Idaho. "These Rural Energy for America Program investments represent an opportunity for rural ???



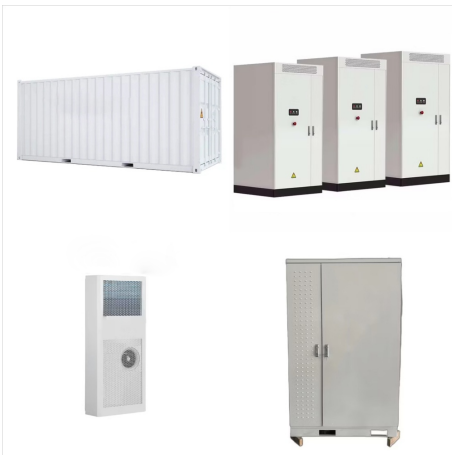
This surge in renewable applications, primarily located near existing and planned transmission lines in south central and southwest Idaho, coincides with the BLM's national objective of permitting 25 gigawatts of renewable energy on public lands by 2025.



Powering the Gem State Idaho is uniquely positioned to become the "carbon-free energy capital of the world. Idaho is home to a variety of energy industries, from nuclear, hydro, wind, solar, biomass, geothermal and integrated energy systems. Quick Facts \$6.3 billion GDP (2022) Idaho's energy industry generated \$6.3 billion in GDP for the state. Idaho's



In late 2025, Jackpot will likely pass the crown to the 200 MW Pleasant Valley Solar, which broke ground in Boise last summer. Other upcoming solar projects of note include Clenera's Crimson Orchard Idaho, a 120 MW solar site with 400 MWh of paired battery storage expected to be operational in Q3 2026.. SEIA predicts a steady flow of utility-scale projects ???



WASHINGTON, D.C. ??? The U.S. Department of Energy (DOE) today announced the first proposed projects selected under the Department's Cleanup to Clean Energy initiative, an innovative effort to repurpose parts of DOE-owned lands???portions of which were previously used in the nation's nuclear weapons program???into sites of clean-energy generation.



The data in these Fast Facts do not reflect two important renewable energy resources: traditional biomass, which is widespread but difficult to measure; and energy efficiency, a critical strategy for reducing energy consumption while maintaining the same energy services and quality of life. Idaho 75% of state's total generation comes from



Idaho's renewable energy options are as diverse as its unique landscape. This map highlights the many forms of major generation, and also identifies the 196 smaller sources of generation across the state. ENERGY-READY WORKFORCE RESILIENT, RELIABLE AND ENERGY-INDEPENDENT THE ENERGY



Because the RECs are sold, Idaho Power cannot claim renewable wind energy from this project is being delivered to customers. Independent Power Producers As of 2020, Idaho Power had contracts with 32 other commercial wind projects, representing 625 megawatts of nameplate capacity (possible energy).



A REC represents the environmental benefits of 1 megawatt-hour of renewable electricity generation. When this renewable energy is purchased, the RECs can be kept or sold. The REC purchaser gets to claim the environmental benefits of that renewable energy. Idaho Power sells RECs to keep customer prices low.



Energy resource development is increasing in Idaho, including traditional and renewable energy sources. Energy development is necessary but there often are environmental impacts that need to be considered. The U.S. Fish and Wildlife Service's Idaho ???



OEMR works with state and federal stakeholders to develop and utilize Idaho's energy and mineral resources in an efficient, effective, and responsible manner that serves to enhance the state's economy and sustain the quality of life for its citizens. Renewable Projects (e.g. solar, wind, geothermal) Windows; Maximum Loan Amount: \$30,000



View current Idaho renewable energy incentives on the DSIRE website. Renewable Portfolio Standard. There are no Renewable Portfolio Standards for Idaho. Most Recent Ordinances. Bannock County Zoning Ordinance ? 451 Jan. 1, 2021 Bingham County Zoning Ordinance ? 7.43.1 Jan. 1, 2021



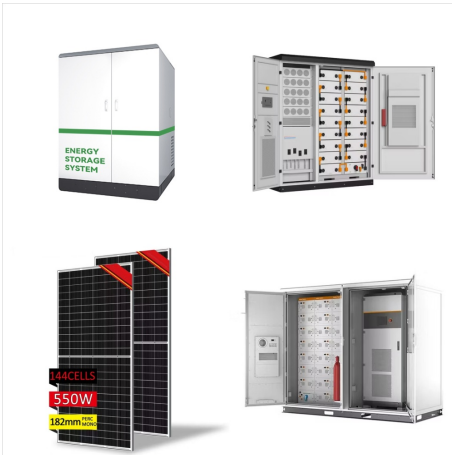
Clean Energy Your Way ? Renewable Energy Certificate Options. Clean Energy Your Way ? Large REC Purchase; Clean Energy Your Way ? Subscription; You can feel good about where your Idaho Power energy comes from. Clean, affordable hydropower is our largest resource, and we are continuing to pursue our goal of providing 100% clean energy by



Idaho State Solar Policy Resources. DSIRE Incentives Database ??? Idaho ??? Search a public clearinghouse for specific solar energy incentives in Idaho and across the United States. Idaho Public Utilities Commission ??? Learn about the governing body that regulates the electricity rates and services of Idaho public utilities. Idaho State Energy Office ??? Find a wide variety of ???



? Idaho National Laboratory | Clean Energy Integration. INL works to optimize hybrid energy systems that expand the nation's integrated energy portfolio, invent new materials and processes for nuclear systems, innovate with advanced intelligent systems, and integrate renewable energy sources to ensure more power is available.



The Idaho Governor's Office of Energy and Mineral Resources (OEMR) is responsible for coordinating energy and mineral resource planning and policy development for the State. OEMR works with state and federal stakeholders to develop and utilize Idaho's energy and mineral resources in an efficient, effective, and responsible manner that serves to enhance the ???



While domestic energy production is an emerging part of a necessary conversation, the BLM disregarded Idahoans' input on a project that is in our backyard and, instead, favored Californians energy needs," added Lieutenant Governor Scott Bedke. "Simply put, California will reap the benefits and Idaho will get all the negative impacts.



? Idaho National Laboratory | Clean Energy Integration. INL works to optimize hybrid energy systems that expand the nation's integrated energy portfolio, invent new materials and processes for nuclear systems, innovate ???



? The new energy sources coming online will challenge the grid in new ways. For example, renewable sources such as wind are intermittent and can drop off without notice. Grids with more sources of renewable energy can be technically and economically challenging to stabilize. Advances will be critical for making the future grid reliable and resilient.