



194 Illinois Renewable Energy jobs available on Indeed . Apply to Supervisor, Clean Energy Originator, Engineer Renewable Energy and more! Skip to main content. An Illinois based company, with facilities located across the country, including regional construction offices, distribution centers and world class manufacturing facilities.



The Illinois Power Agency (IPA) is here to help! The Small and Emerging Business Guide walks solar companies through the step-by-step process of becoming an Approved Vendor (solar companies directly participating in the IPA's renewable energy programs) or Designee (customer-facing solar sub-contractors involved with the IPA's renewable energy programs) with Illinois ???



Nelnet Renewable Energy is a full-service regional solar company that has a solid foothold in the midwest, including all of Illinois. It's known for great customer service, appealing financing options, and customization options for all residential systems.



Illinois electricity production by type. Wind power has been supported by a renewable portfolio standard, passed in 2007, and strengthened in 2009, which requires 10% renewable energy from electric companies by 2010 and 25% by 2025. [4] For 2013, in-state renewable generation was just 5.1% of Illinois' total generation. [5] Additional renewably generated electricity is imported ???



TIMING AND STATUS OF THE DRAFT RENEWABLE ENERGY ACCESS PLAN . This second draft of the Renewable Energy Access Plan (REAP) was co-authored by staff of the Illinois Commerce Commission (ICC) and The Brattle Group. Consultants from Great Lakes Engineering served as contributing authors focused on land use and renewable energy access ???



Based on our search of over 20 companies, the best solar companies in Illinois are SunPower, Tesla and Blue Raven Solar. 72% of Midwest residents cited energy independence as their main reason



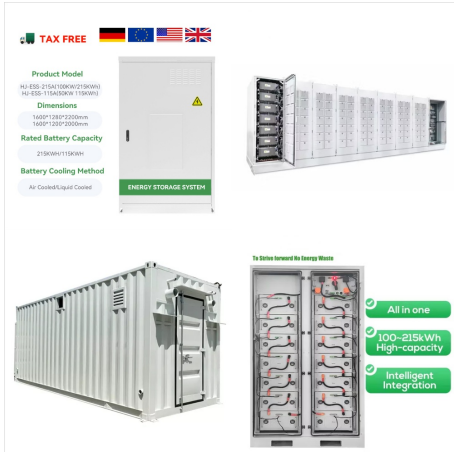
The bills establish Illinois' first energy storage mandate and seek to speed up development and interconnection of renewable energy projects. Solar. Commercial and Industrial of jobs to preventing dangerous blackouts to bolstering our power grid to make Illinois an attractive investment for energy-intensive tech companies," explained



Printed by the Authority of State of Illinois 8/24 IOCI 25-0290 Renewable Energy Credits (RECs) A REC is produced when one megawatt-hour (MWh) of electricity is generated from a renewable resource (such as solar, wind, etc.) and delivered to the grid. In Illinois, the Illinois Shines and Illinois Solar for All Programs provide incentives



But that program is a relatively small part of the state's plan to build enough renewable energy to meet goals like relying 25 percent on renewable energy sources by 2025, 40 percent by 2030 and



Springfield, IL ??? On Thursday, the Illinois Commerce Commission (ICC) adopted the state's first Renewable Energy Access Plan (REAP), an actionable roadmap to ensure Illinois meets its policy requirements for an equitable, reliable, and cost-effective clean electricity system. The REAP is intended to be a tool to encourage regional transmission organizations (RTOs) to ???



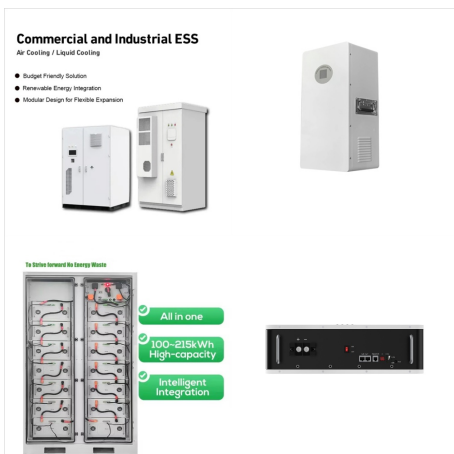
Make Illinois a Renewable Energy Leader and Phase Out Dirty Power 4. Implement a Market-Based Solution That Supports Clean Power and Clean Air also prioritize health and economic development for environmental justice communities and bring accountability to big energy companies. The principles laid out by the Pritzker Administration are a



Nearly all renewable energy generated in the state comes from wind turbines, while hydropower, biomass, and solar account for a very small share of total energy production. Though not a renewable energy source, Illinois's largest power supplier is not a carbon emitter either. Nuclear reactors generate nearly 100 million MWh electricity in



On Sept. 15, 2021, the Climate and Equitable Jobs Act (Public Act 102-0662) was signed into law by Illinois Governor J.B. Pritzker. This Act will expand the Illinois Renewable Portfolio Standard and strengthen the diversity, equity, and labor standards applicable to the growing clean energy economy



The Illinois Solar Energy Association (ISEA) is a non-profit organization that promotes the widespread application of solar and other forms of renewable energy through education and advocacy. ISEA is the state resource for renewable energy related policy developments, educational classes, events and access to local renewable energy vendors.



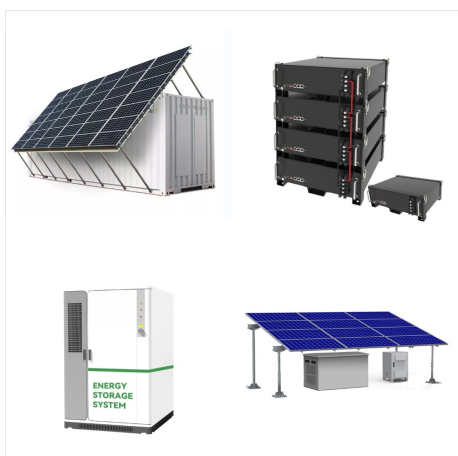
Economically, Loomis said it makes sense for energy companies to invest in renewable technology. From left, Drs. Jin Jo, Matt Aldeman, and David Loomis have worked together to research renewable energy and push Illinois toward a greener present and future. Illinois law requires energy companies to be taxed a standardized rate based on the



# ILLINOIS RENEWABLE ENERGY COMPANIES



Illinois Renewable Energy Access Plan ENABLING AN EQUITABLE, RELIABLE, AND AFFORDABLE TRANSITION TO 100% CLEAN ELECTRICITY FOR ILLINOIS Power); MidAmerican Energy Company ("MidAmerican"); Environmental Law and Policy Center, Illinois Renewable Energy Access Plan Brattle | ii



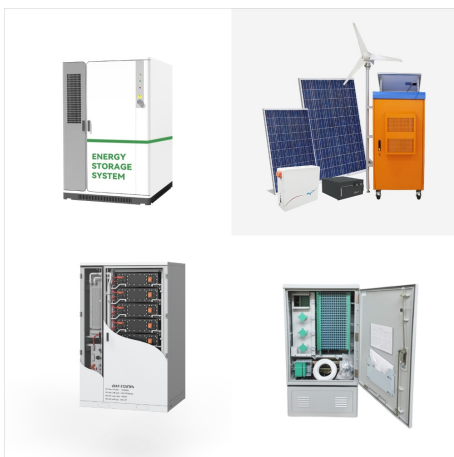
Illinois" Renewable Energy Access Plan ??? Zones of renewable energy to guide RTO Long Range Transmission planning. ??? Identify state policies that RTOs should design transmission for, such as the 2040 RPS target and clean energy goals for 2050. December 2023 14. 1. Source: ICC, "Illinois Renewable Energy Access Plan ???Second Draft



"ICC") for consideration and approval its proposed plan for the procurement of renewable energy credits ("RECs") for Ameren Illinois Company ("Ameren Illinois"), Commonwealth Edison ("ComEd"), and MidAmerican Energy Company ("MidAmerican") (collectively referred to as the



The company headquartered in Chicago had an early \$300,000 investment from Illinois Clean Energy Innovation Fund. Evergreen Climate Innovations (formerly Clean Energy Trust) manages the Illinois Clean Energy Innovation Fund, a revolving investment fund seeded by a grant from the State of Illinois and the U.S. Department of Energy.



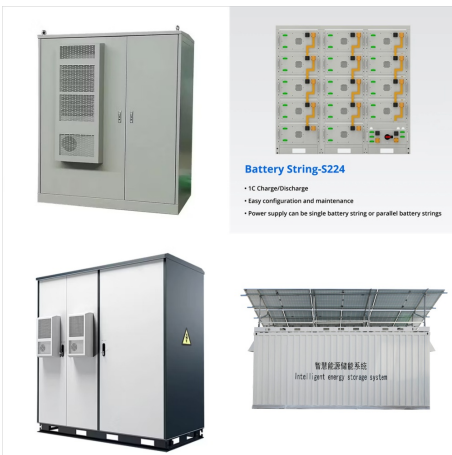
After contracting with a new utility-scale wind or solar project, large customers retiring Renewable Energy Credits (RECs) in an amount equivalent to at least 40% of their load can receive reduced Renewable Portfolio Standard (RPS)-related charges. Contract must be for at least ten years, with an annual application window.



RWE Clean Energy operates a renewable energy portfolio of about 8 gigawatts (GW) installed capacity of onshore wind, solar, and battery storage, making it the number four renewable energy company in the U.S. and the country's second largest solar owner and operator, present in the majority of U.S. states.



Though not a renewable energy source, Illinois's largest power supplier is not a carbon emitter either. Nuclear reactors generate nearly 100 million MWh electricity in Illinois, more than in any



Renewable Energy Access Plan (REAP) On July 12, 2022, Staff of the Commission published a First Draft REAP that comprehensively and actionably outlines the path to an equitable, reliable, and affordable path to meeting Illinois' policy requirements for a clean electricity system.



Public Act 102-0662, which includes the Energy Transition Act and related legislation, was enacted by the General Assembly with an effective date of September 15, 2021. The Act obligates the Commission to take various actions to implement new programs, initiatives and directives to further the State's goals of transitioning the State to 100% clean energy; supporting a ???