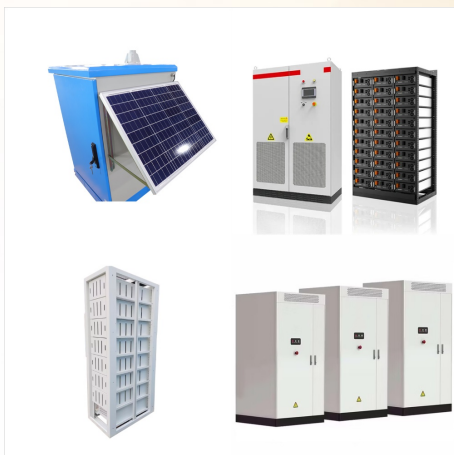


An electric vehicle battery pack can hold thousands of lithium-ion battery cells and weigh around 650-1,800 lbs (~300-800 kg). EV batteries can be filled with cells in different kinds and shapes. This article will explore the lithium-ion battery cells used inside electric vehicles. Lithium-ion Battery Cell Types



Pioneering work of the lithium battery began in 1912 under G.N. Lewis, but it was not until the early 1970s that the first non-rechargeable lithium batteries became commercially available. Attempts to develop rechargeable lithium batteries followed in the 1980s but failed because of instabilities in the metallic lithium used as anode material.



Buy Duracell CR2025 3V Lithium Battery, Child Safety Features, 1 Count Pack, Lithium Coin Battery for Key Fob, Car Remote, Glucose Monitor, CR Lithium 3 Volt Cell on Amazon FREE SHIPPING on qualified orders



The inside of a lithium battery contains multiple lithium-ion cells (wired in series and parallel), the wires connecting the cells, and a battery management system, also known as a BMS. The battery management system monitors the battery's health and temperature. At the top of each charge, the BMS balances the energy across all cells and helps



Types of Lithium-ion Batteries Similar to the lead- and nickel-based architecture, lithium-ion uses a cathode (positive electrode), an anode (negative electrode) and electrolyte as conductor. The cathode is a metal oxide and the anode consists of porous carbon. During discharge, the ions flow from the anode to the cathode through the



Finally, lithium-ion batteries tend to last far longer than lead-acid ones. This means that, even with their higher price tag, lithium-ion batteries generally provide a better value over the long run. Lead Is Dead: Understand How Lithium-Ion Batteries Work and Choose a Better Battery. Lead-acid batteries may still be common, but the trend is clear.



Anode. Lithium metal is the lightest metal and possesses a high specific capacity (3.86 Ah/g) and an extremely low electrode potential ( $-3.04$  V vs. standard hydrogen electrode), rendering



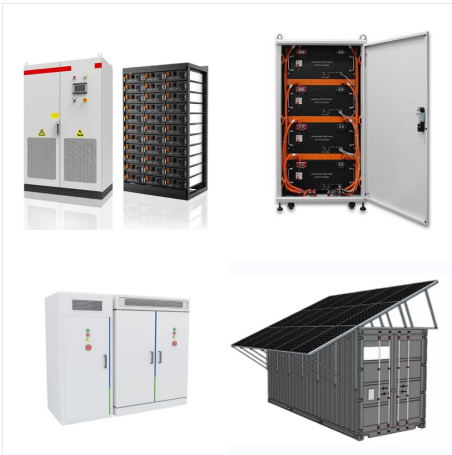
Lithium batteries can also store about 50% more energy than lead-acid batteries! Power your off-grid dream with BigBattery today! See More Products. On Sale! 6kW 10.2kWh ETHOS Off-Grid System. 2x Battery Modules. K0708 \$ 5,449 Original price was: \$5,449. \$ a?|



When we talk about the foundation of batteries, the only name that comes to mind is none other than a lithium-ion cell. From use in practical applications to use in specific applications, lithium-ion battery cells have always remained the priority. Although there are some other efficient battery options as well, lithium cells are considered the most capable ones in the a?|



Lastly, lithium titanate batteries, or LTO, are unique lithium-ion batteries that use titanium in their makeup. While LTO batteries are very safe, high performing, and long-lasting, their high upfront cost has prevented them from becoming a more common option in all types of storage applications. Compared to other lithium-ion battery



This article will show you the LiFePO4 voltage and SOC chart. This is the complete voltage chart for LiFePO4 batteries, from the individual cell to 12V, 24V, and 48V.. [Battery Voltage Chart for LiFePO4](#). Download the LiFePO4 voltage chart [here](#) (right-click -> save image as).. Manufacturers are required to ship the batteries at a 30% state of charge.



This requires batteries that can do more than just store energy. Polarium Battery is our series of intelligent, connected, and robust batteries built on lithium-ion battery technology, with a proven track record from all around the world a?? turning uncertainty into predictability, preparing you for whatever the future may hold.





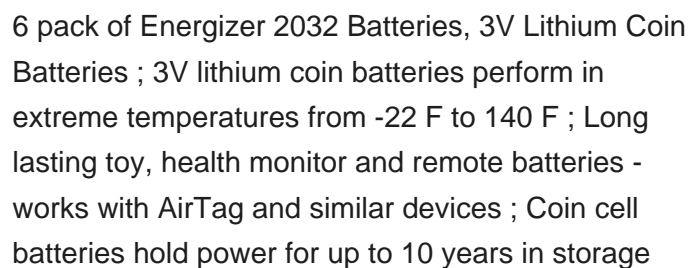
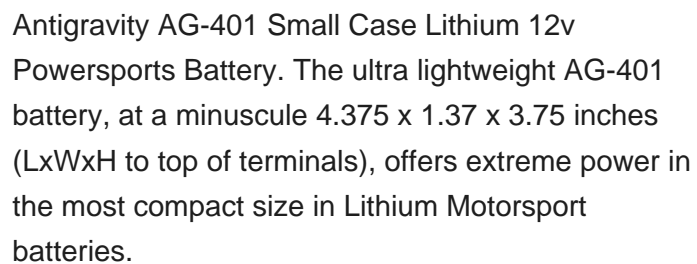
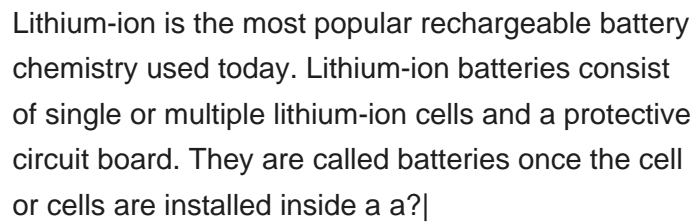
The LIT-10 Lithium Battery Pack Kit contains the lithium battery pack, as well as a charging cable. SPYPOINT Lithium Battery boasts a 10,200 mAh capacity that provides incredible battery life. Our rechargeable lithium battery gives you a great sense of satisfaction that your place is well secured and powered all the time. Better Cold-Weather

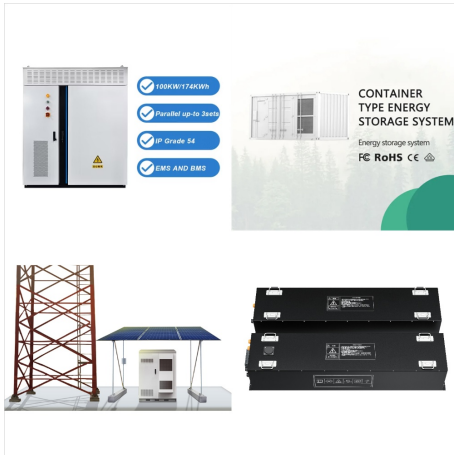


Buy Duracell CR2025 3V Lithium Battery, Child Safety Features, 1 Count Pack, Lithium Coin Battery for Key Fob, Car Remote, Glucose Monitor, CR Lithium 3 Volt Cell on Amazon FREE SHIPPING on qualified orders



A battery is made up of an anode, cathode, separator, electrolyte, and two current collectors (positive and negative). The anode and cathode store the lithium. The electrolyte carries positively charged lithium ions from the anode to the cathode and a?|





The most crucial difference between a lithium-metal cell and a conventional lithium-ion battery is that the cell expands as lithium plates directly on the separator of a lithium-metal cell. As such, the overall cell is thicker when fully charged. This expansion is particularly pronounced in an anode-free design like QuantumScape's, and since



Duracell CR2032 3V Lithium Battery, Child Safety Features, 12 Count Pack, Lithium Coin Battery for Key Fob, Car Remote, Glucose Monitor, CR Lithium 3 Volt Cell (2032 3V) Duracell CR123A 3V Lithium Battery, 12 Count Pack, 123 3 Volt High Power Lithium Battery, Long-Lasting for Home Safety and Security Devices, High-Intensity Flashlights, and



The lithium-ion cells can be either cylindrical batteries that look almost identical to AA cells, or they can be prismatic, which means they are square or rectangular The computer, which comprises:: One or more temperature sensors to monitor the battery temperature; A voltage converter and regulator circuit to maintain safe levels of voltage and current



Lithium-ion cells are the building blocks of battery packs, and they are available in various form factors and sizes. The three primary components of a lithium-ion cell are the cathode and anode, separated by an electrolyte. These parts are stacked together and placed in one of a few packages: cylindrical, pouch, or hard case prismatic. Each



Practical button lithium batteries are generally marked by structure and shape size. The button battery can be divided into two types: charging and non-filled. Standard charging butt batteries include the 3.6V LIR series and 3V ML series, and LV series. The non-charging button battery includes 3V CR series, 1.5V LR series, and 1.55V SR series.



3V Lithium Battery, 1 Count Pack, Lithium Coin Battery for Medical and Fitness Devices, Watches, and more, CR Lithium 3 Volt Cell Visit the DURACELL Store 4.7 4.7 out of 5 stars 8,868 ratings





The first rechargeable lithium battery was designed by Whittingham (Exxon) and consisted of a lithium-metal anode, a titanium disulphide ( $\text{TiS}_2$ ) cathode (used to store Li-ions), and an electrolyte composed of a lithium salt dissolved in an organic solvent. 55 Studies of the Li-ion storage mechanism (intercalation) revealed the process was



Finally, lithium-ion batteries tend to last far longer than lead-acid ones. This means that, even with their higher price tag, lithium-ion batteries generally provide a better value over the long run. Lead Is Dead: Understand a?|



Incell International, today Polarium, is launching the next generation of Smart Lithium Batteries<sup>a?c</sup>, even smarter, better and more versatile. Polarium lithium batteries have a number of features highly valued by our customers, including: Ease of use, plug-and-play compatible with existing rectifier systems, works with any rectifier thanks