

Are island power systems underutilised?

As considered above, island power systems are typically characterised by a high ratio of total installed capacity over peak load and a low capacity factor as noted in Section 4.2. The consequence of this is a relatively underutilised generation system.

What challenges do Island power systems face?

Abstract: As many island power systems seek to integrate high levels of renewable energy, they face new challenges on top of the existing difficulties of operating an isolated grid.

What are some examples of large island power systems?

These islands have typical values for power systems running on diesel and heavy fuel oil. They compare quite well to similar large island systems, Malta being an example of a large island with a similar production mix. 4.4. Average disconnection time per customer

What is the power system of the island?

The overall situation of island's power system is somewhat unique among the islands studied in this paper. The island has a modern 87 MW combined cycle gas turbine (CCGT) plant, using LNG. This provides low cost generation on the island that is also competitive on the UK power market .

Are small island energy companies able to develop storage systems?

Small island energy companies do not typically have the research or engineering capability to internally assess the viability of storage projects. Small island power companies find it difficult to raise the required finance for implementation of storage systems. Project costs here can be very significant relative to the scale of the system.

Should Islands be connected to mainland power systems?

At the cost of an often very significant capital investment, connecting islands to mainland power systems can significantly reduce the costs of electricity supply. Several techno-economic analyses have investigated relatively positive cases for interconnection, e.g. for several Greek islands and for Malta ,.

INDUSTRIAL POWER SYSTEMS U S OUTLYING ISLANDS



The United States Minor Outlying Islands are nine island territories of the United States. They are Baker Island, Howland Island, Jarvis Island, Johnston Atoll, Kingman Reef, Midway Atoll, Palmyra Atoll and Wake Island in the Pacific ???



Hong Kong has numerous outlying islands that are relatively underdeveloped due to isolation from the urban core and are dependent on ferries. Concurrently, the Hong Kong Government has expressed a

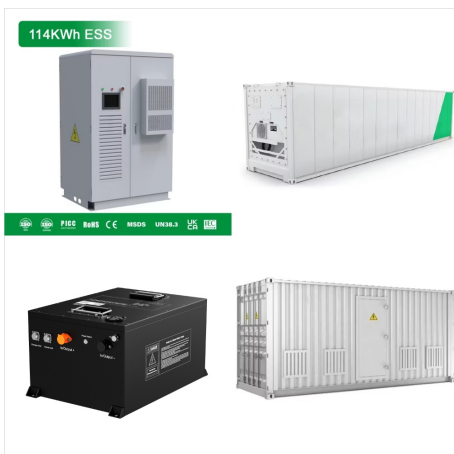


??? Each island (except for Bajo Nuevo Bank and Serranilla Bank) has a unique FIPS (INCITS) code treating it as a county-equivalent for statistical purposes; "74" is the state-level code for the U.S. Minor Outlying Islands. [16] [17] ??? GEC stands for "Geopolitical Entities and Codes", a coding system superseding the FIPS 10-4 codes; the codes (such as FQ for Baker ???

INDUSTRIAL POWER SYSTEMS U S OUTLYING ISLANDS



At Long Island Power Systems, we offer a range of services to help you keep your power systems running smoothly. From residential backup generators to large-scale industrial power systems, we have the knowledge and resources to get the job done, and we'll work closely with you through every step, from initial consultation to final



The United States Minor Outlying Islands is a collection of nine beautiful and remote islands located in the Pacific Ocean and the Caribbean Sea. the IP address of your mobile device, your mobile operating system, and the type of mobile internet browser you use. The arbitrator shall have the power to award any relief that a court could



These islands are not the populated US territories. So, in other words, it is not Puerto Rico, Guam, American Samoa, the US Virgin Islands, or the Northern Mariana Islands. These territories are all categorized separately. The Minor Outlying Islands specifically refers to ???



The following sections describe the impacts of inverter-based resources (IBR) on protection in more detail. 2.1 Impact of IBR on Negative-Sequence-Based Protection Elements 2.1.1 Background. Figure 14.2 shows that internal voltage vectors are generated and regulated in the positive-, negative-, and zero-sequence networks by IBRs during fault ride-through (FRT).



GNB can offer energy suppliers direct current (DC) power systems and backup energy storage for use in power distributors, generator starters, switching stations and power plants. The PJ2V battery is highly reliable and has a long service ???



The plan is to pipe the low-carbon energy to Singapore via a proposed new subsea power cable. When completed, this project, comprising of several large scale solar photovoltaic (PV) systems and energy storage facility across Riau Islands, will have a combined solar photovoltaic (PV) capacity of 7 GWp.

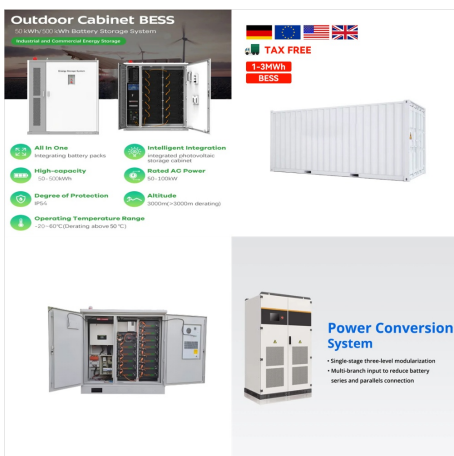
INDUSTRIAL POWER SYSTEMS U S OUTLYING ISLANDS



Looking to contact us? Let's Talk. Address: PR Industrial S.r.l Do you consent to The transfer of personal data to companies belonging to PR Industrial Group (Joint Controllers of data processing), in or outside the EU, to allow these companies to carry out marketing activities or to provide information and/or make offers on products



Unplanned power system islanding is usually seen as a major risky operating condition and specific countermeasures are applied in order to avoid it. However the capability of voluntary disconnection from the external grid and autonomous operation is often a requirement for ???



Industrial Power Systems is an experienced supplier within the Power Generation Industry and are trusted partners and exclusive distributors of DEIF Control & Protection equipment. We supply and support all applications, including Microgrid Control Solutions and equipment for Generator Control & Protection. We represent carefully selected

INDUSTRIAL POWER SYSTEMS U S OUTLYING ISLANDS



The Caribbean islands considered part of the United States Minor Outlying Islands include Navassa Island, a small island off the coast of Haiti that is claimed by both Haiti and a small group of Columbians calling the island a sovereign nation; the Baja Nuevo Bank, a small uninhabited sand bank; and the Serranilla Bank, a larger, mostly submerged atoll with a ???



Constellation Energy signed a 20-year power purchase agreement (PPA) with Microsoft on Friday (20 September) to help the restart of a unit of the Three Mile Island nuclear plant in Pennsylvania, US. Under the latest agreement, Microsoft will purchase energy from Three Mile Island to power its data centres in the state.



From seasonal cooling of local operations to powering big projects, our experts help businesses around the world improve production, manage power generation and plan for emergencies. Search Energy, power, HVAC and oil-free rental solutions

INDUSTRIAL POWER SYSTEMS U S OUTLYING ISLANDS



Abstract: As many island power systems seek to integrate high levels of renewable energy, they face new challenges on top of the existing difficulties of operating an isolated grid. With their ???



Overview. There are 14 territories administered by the United States but not claimed by any of the 50 US states. 9 of these territories are uninhabited, but in the 5 territories where educational institutions exist (American Samoa, Guam, Puerto Rico, the Northern Mariana Islands, and Puerto Rico), they follow the U.S. education system and are ???



Online course. Sustainable Electrical Power Systems Engineering. Qualification: MSc, PGDip, PGCert Duration: 12-30 months, depending on the qualification level Delivery: all taught units are delivered online Workload: approx. 15 hours per ???

INDUSTRIAL POWER SYSTEMS U S OUTLYING ISLANDS



The US Minor Outlying Islands are a chain of islands that are US overseas territories. As such, it is counted as the US for country streak purposes. The guide will be somewhat skewed towards the Midway Atoll, as that is the only island with pinpointable coverage.

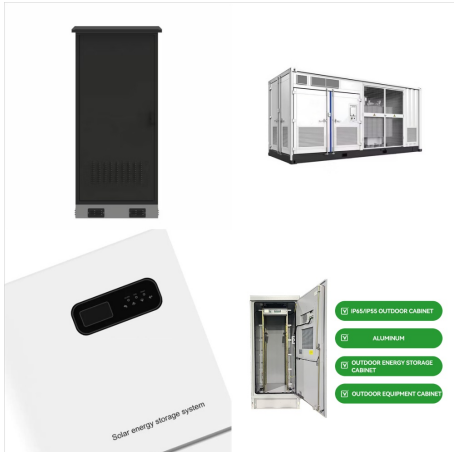


The U.S. Guano Islands Act of 1856 established claims over a number of isolated islands, including Baker, Howland, Jarvis, and Johnston (and some of the islands now belonging to Kiribati, notably Canton and CHRISTMAS islands). Palmyra was claimed in 1862 by the Kingdom of Hawaii, and passed to the UNITED STATES with Hawaii's in 1898.



Power Systems Research is the leading source of global production, forecast, and population data for equipment and vehicles powered by IC engines, electric, and hybrid powertrains. Our Expertise PSR analysts collect and analyze global engine and powertrain data and information. We use this data to develop targeted forecasts by industry segment and region.

INDUSTRIAL POWER SYSTEMS U S OUTLYING ISLANDS



The ISO introduced the term "United States Minor Outlying Islands" in 1986. From 1974 until 1986, five of the islands (Baker Island, Howland Island, Jarvis Island, Palmyra Atoll and Kingman Reef) were grouped under the term "United States Miscellaneous Pacific Islands", with ISO 3166 code PU. The code of Midway Atoll was MI, the code of



Solutions. onsemi's silicon carbide (SiC) and innovative packaging technologies are the gateway to improved density, reducing system losses and simplifying cooling thus improving overall system reliability across a wide range of mission critical UPS systems. Our system expertise has been encapsulated into an array of optimized power modules supporting all key power stage ???



In 1936, a colonization program began to settle Americans on Baker, Howland, and Jarvis. Still, all three islands were evacuated in 1942 due to World War II. [1] [2] ISO introduced the term "United States Minor Outlying Islands" in 1986. ???

INDUSTRIAL POWER SYSTEMS U S OUTLYING ISLANDS



5 ? A methodology combining geographic information systems, multi-criteria decision-making, and artificial neural network (ANN) techniques found that approximately 1.36% ???