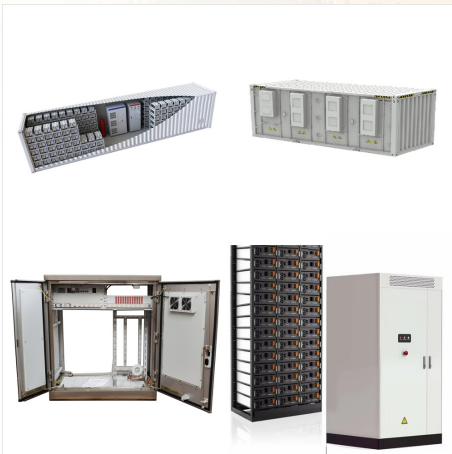




Saturn is the sixth planet from the Sun and the second-largest planet in our solar system. Like fellow gas giant Jupiter, Saturn is a massive ball made mostly of hydrogen and helium. Saturn is not the only planet to have rings, but none are as spectacular or as complex as Saturn's.



Dwarf planet Haumea is a member of a group of objects that orbit in a disc-like zone beyond the orbit of Neptune called the Kuiper Belt. This distant realm is populated with thousands of miniature icy worlds which formed early in the history of our solar system about 4.5 billion years ago.

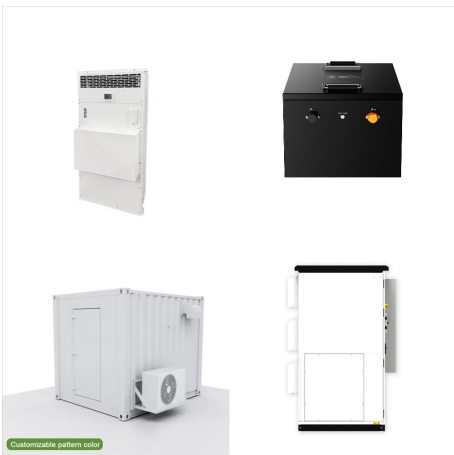


Dark, cold, and whipped by supersonic winds, ice giant Neptune is the eighth and most distant planet in our solar system. More than 30 times as far from the Sun as Earth, Neptune is the only planet in our solar system not visible to the naked eye.

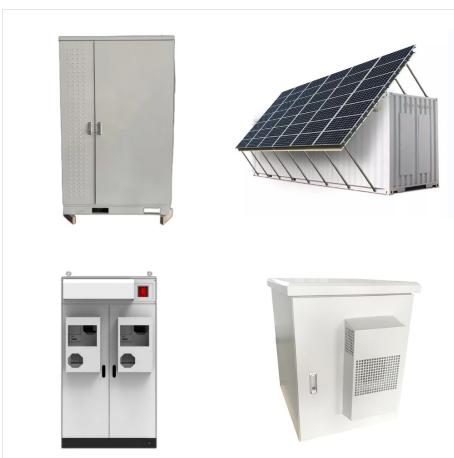
INTERESTING FACTS ABOUT OUR SOLAR SYSTEM



This is place to find all the latest and greatest stuff created just for kids by NASA. There are plenty of games, stories, arts and crafts, plus links to the coolest NASA sites. Sorry grownups, this space is for kids only.



NASA's Kepler space telescope, famous for finding thousands of exoplanets ??? planets outside our solar system -- also settled in an Earth-trailing orbit six years after Spitzer. Spitzer imaged the coiled galaxy NGC 1097 during its cold mission.



The smallest planet in our solar system and nearest to the Sun, Mercury is only slightly larger than Earth's Moon. From the surface of Mercury, the Sun would appear more than three times as large as it does when viewed from Earth, and the sunlight would be as much as seven times brighter.

INTERESTING FACTS ABOUT OUR SOLAR SYSTEM



Our solar system's small bodies ??? asteroids, comets, and meteors ??? pack big surprises. These chunks of rock, ice, and metal are leftovers from the formation of our solar system 4.6 billion years ago. They are a lot like a fossil record of our early solar system.



Size and Distance. Our nearness to Venus is a matter of perspective. The planet is nearly as big around as Earth ??? 7,521 miles (12,104 kilometers) across, versus 7,926 miles (12,756 kilometers) for Earth. From Earth, Venus is the brightest object in the night sky after our own Moon.



Our solar system consists of our star, the Sun, and everything bound to it by gravity ??? the planets Mercury, Venus, Earth, Mars, Jupiter, Saturn, Uranus, and Neptune; dwarf planets such as Pluto; dozens of moons; and millions of asteroids, comets, and meteoroids.

INTERESTING FACTS ABOUT OUR SOLAR SYSTEM



Dwarf planet Pluto is a member of a group of objects that orbit in a disc-like zone beyond the orbit of Neptune called the Kuiper Belt. This distant realm is populated with thousands of miniature icy worlds, which formed early in the history of our solar system about 4.5 billion years ago.