

Are we able to accept interlocking systems of domination?

Until we are all able to accept the interlocking,interdependent nature of systems of dominationand recognize specific ways each system is maintained,we will continue to act in ways that undermine our individual quest for freedom and collective liberation struggle. - Love as the Practice of Freedom,in Outlaw Culture,1994

What are systems of power?

Systems of power are oppressiveand define relationships between marginalized communities and the dominant culture; they also shape social norms and experiences within marginalized communities. Systems of power feed the structural barriers that are the root causes of inequity experienced by young women of color.

What are the defining power structures in the United States?

They are rooted in social constructions of race and gender and are embedded in history (colonization,slavery,migration,immigration,and genocide) as well as present-day policies and practice. These systems of power reinforce white supremacy,patriarchy,and heteronormativityas defining power structures in the United States.

Can intersectionality prevent epistemic violence?

In our attempt to avoid committing epistemic violence, the first author poured over the intersectionality literature to learn what intersectionality is and isn't, and the complex analyses that are required to do intersectional research.

INTERLOCKING SYSTEMS OF POWER



Breaking Into the Interlocking Logic. As we delve deeper into this article, we will explore the various types of interlocking mechanisms used for Gas-Insulated Substation (GIS), their applications in substations, power plants, and electrical installations, as well as their significance in ensuring the sustained safety and functionality of these vital components of the ???

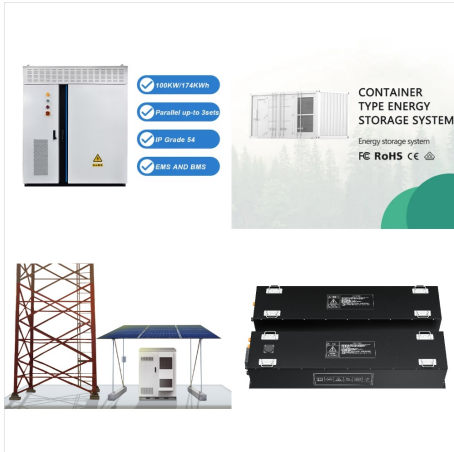


Interlocking Systems of Power, Privilege, and Oppression in Adult Higher Education Classes. Elizabeth J. Tisdell View all authors and affiliations. Volume 43, Issue 4. students who benefit from interlocking systems of privilege have more power in the classroom; (b) the male professor tended to exert more control than the female professor



TEACHING ABOUT INTERLOCKING SYSTEMS OF OPPRESSION 351 limited to racism and sexism but including other systems, like classism, heterosexism, and so on. Although much of the theoretical work on intersectionality focuses on women of color or other multiply marginalized subjects (i.e., people marginalized by two or more system of oppression),

INTERLOCKING SYSTEMS OF POWER



The popularity and utility of intersectionality as a theory, both within sociology and beyond, has in some ways obscured its emphasis on interlocking systems of structural power and domination. Yet, gender theorists are positively positioned to return power to the center of analyses of inequality and to cover new substantive ground in research



Matrix of domination is a theoretical approach that explores the interlocking systems of oppression in terms of race, gender, class, and other social categories faced by marginalized or othered people. It theorizes power in four domains: structural, disciplinary, hegemonic, and interpersonal. Originally used by Patricia Hill Collins in relation to the discrimination and subsequent struggle ???



Observations of classes taught by a male and a female professor, interviews, and document analysis examined forms of resistance and reproduction in professors' and students' roles. Students benefiting from interlocking systems of privilege have more power in the classroom. Male professor exerted more control than the female. Middle-aged women with more ???

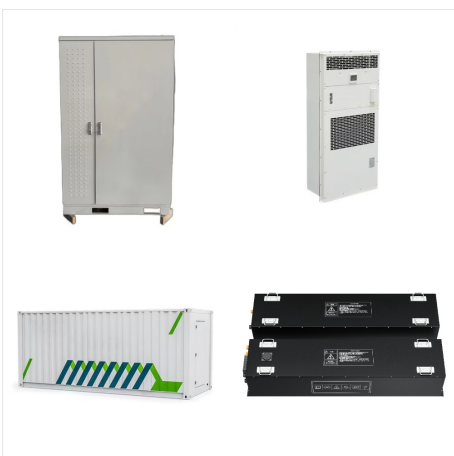
INTERLOCKING SYSTEMS OF POWER



An interlock device is designed to allow a generator to provide backup power in such a way that it (a) prevents main and generator power to be connected at the same time, and (b) allows circuit breakers to operate normally without interference in the event of an overload condition. Most interlock devices for electrical systems employ a



This qualitative comparative case study was guided by a feminist-materialist theoretical framework, and examined how power relationships predominantly based on gender but including race, class, and age were manifested in higher education classrooms of adult students. Two master's level counseling classes were chosen for the study, one was taught by a male ???



In Intersectionality, the primary concern about the interconnection between knowledge and power, as well as the interlocking relation between different systems of oppression is still there, but Collins transcends previous categories that marked her work to put forward the contours of a wider theoretical model and develop it as a critical social

INTERLOCKING SYSTEMS OF POWER



In mechanical interlocking, points and signals are operated by the muscle power of the local operator, and the levers are connected to the controlled track elements by mechanical wire or rod transmission. To compensate for the lack of electrical monitoring of the point positions, facing points are often equipped with an independent point lock



The intersection of these concepts has been recently referred to as Colonial Racial Capitalism (Koshy et al. in 2022) and incorporates religion, language, politics, economics, and the desire for real power. These systems of power require strict adherence to gender norms and socio-economic class in order to continue providing the best output for



OverviewHistorical backgroundFeminist thoughtForms: structural, political, representationalKey conceptsPractical applicationsCriticismIntersectionality and education

INTERLOCKING SYSTEMS OF POWER



So in order to do the interruption specially designed power interlocking system with the power interrupting switch will be needed. This switch should be able to handle and break the load effectively. In the power interlocking, the stop command from the interlocking device would directly interrupt the energy supply to the machine actuators, in



Intersectionality recognizes interlocking systems of power that impact those who are most marginalized in society. Intersectionality considers that various forms of social stratification, such as class, race, sexual orientation, age, disability, and gender, do not exist separately from each other but are interwoven together.



Instead, we acknowledge how addressing interlocking oppressions provides a robust analysis of systems of power and people's interactions within those systems. Our intersectional analysis does not hyper-focus on multiple identities but instead recognizes how multiple oppressions land in our lives (Crenshaw, 1991).

INTERLOCKING SYSTEMS OF POWER



another and with systems of power that oppress and advantage people in the workplace and broader community.¹ racism and sexism interlock,¹³ but the concept is broad and can also describe the interconnections among other types of oppression such as classism, heterosexism,



Interlocking devices. Interlocking devices are the components used to create the interlock between the safeguarding device and the machine's power and control systems. Interlocking systems can be purely mechanical, purely electrical or a combination.



produced by multiple systems of oppression and privilege, it is impor-tant to note that the now-popular "intersection" metaphor has numerous historical antecedents in US Black feminism which can be traced to the nineteenth century (Sheftall 1995; Gines 2014). The concept of "interlocking systems of oppression"???the particular

INTERLOCKING SYSTEMS OF POWER



A guard equipped with an interlocking device "without guard locking" can be opened at any time during machine operation. Upon opening the guard, the interlocking device sends a stop signal to the system. It is important to ensure that the access time to machine hazards is longer than system stopping performance.



Interlocks: Are the programmed or hardwired control systems to protect systems and improve the operation reliability. Protections: Are the programmed or hardwired control systems to protect the equipments, man power and systems from failure/harm. The interlock and protection system is used to ensure safety of equipment and personnel as well as smooth & trouble free operation ???

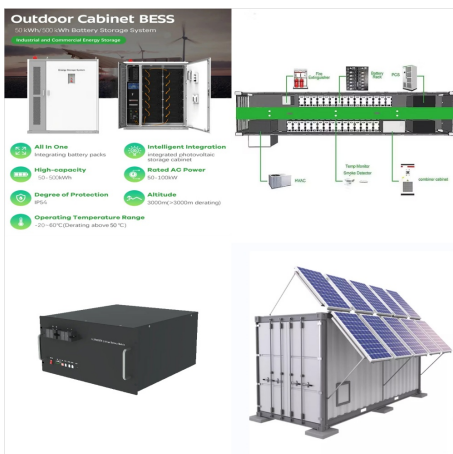


Intersectionality is a theoretical framework for understanding how multiple social identities such as race, gender, sexual orientation, SES [socioeconomic status], and disability intersect at the micro level of individual experience to reflect interlocking systems of privilege and oppression (i.e., racism, sexism, heterosexism, classism) at the

INTERLOCKING SYSTEMS OF POWER



Collins argues that the organization of interlocking, large-scale social institutions reproduce the subordination of Black women. Collins writes that in this domain of power old ideas that uphold the system get refashioned as society changes over time. Through ideology, culture, and consciousness, the beliefs of the dominant group get



This decentralized system is better thought of as a network of "self-referential and complementary political decision-making units," often transcending nation-state authority as "the sovereign power that governs the world" (Hardt and Negri, 2001; Prozorov and Rentea, 2017).



The concept of "interlocking systems of oppression" was defined in a social movement context by the Combahee River Collective (CRC) in "A Black Feminist Statement" as the structural anchor of the experience of simultaneous oppressions and as the target of integrated political struggle (CRC 1977/1981/1983, p. 210). Nearly 40 years later, it has ???

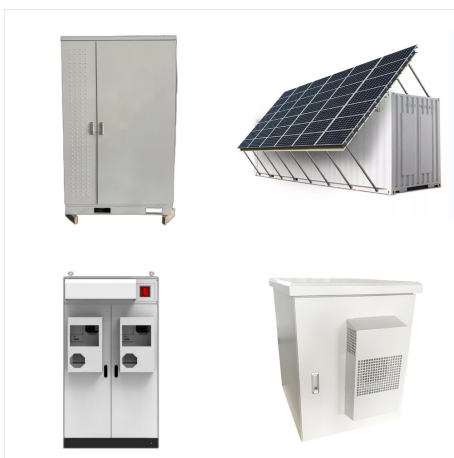
INTERLOCKING SYSTEMS OF POWER



Major findings of the study are: (a) students who benefit from interlocking systems of privilege have more power in the classroom; (b) the male professor tended to exert more control than ???



ed to identifying, understanding, and confronting the interlocking systems¹ of privilege and oppression can improve mathematics teacher education and, ulti-1 By "interlocking systems," we mean that the oppression of some people does not exist without systems supporting the unearned privilege of other people.



Intersectionality is an analytic tool for studying and challenging complex social inequalities at the nexus of multiple systems of oppression and privilege, including race, gender, sexuality, social ???