

What happens if a solar panel battery drains?

All batteries will discharge at some point, and if there is little to no power left, it will damage the internal circuitry. As many solar panel users will point out, using a charge controller is one of the best ways to prevent unexpected battery drain.

How do I avoid a solar battery drain?

To prevent a solar battery from draining fast and extend its life, avoid allowing batteries to stand too long discharged between charges (more than 24 hours in warm weather and more than a few days in cooler weather). Also, do not leave a battery in storage without compensating for energy loss.

Why is my solar battery draining fast?

If your battery bank is draining rapidly, there might be an underlying problem in your solar panel system. This guide will show the most common reasons for rapid battery power loss and what to do about it. A solar battery will drain quickly if it isn't recharged for a long period or if the charge controller is faulty.

How long does it take for a solar inverter to charge?

So a 10W idle draw will completely drain the battery in 5 days if it's not being recharged at all. Your inverter might use 30W when idle. $1200\text{Wh} / 30\text{W} = 40$ hours. So if your battery is not completely dead after 5 days then it must be getting some solar charging in during the week.

Can a solar panel drain a battery at night?

A good solar panel won't drain your battery; even during nighttime. If it happens the main reason is that its blocking or bypass diodes are broken and need replacement. Even then if you have a Solar Charge Controller it'll prevent battery drainage. Usually, most people's solar panels drain during the night.

Are solar charge controllers causing battery drainage?

Many people think that solar charge controllers or inverters are responsible for battery drainage, especially at night. However, solar charge controllers actually prevent battery drainage. So, it is highly unlikely that your solar panel or other components are causing the battery to drain.

INVERTER DRAINING BATTERY SOLAR



This one bad cell could also be reducing the overall charge current in the rest of the battery system. Be sure that your solar panel set is capable of supplying adequate voltage (more than 24V open circuit) into the charging system. the inverter beeps when the battery is at 28% capacity as a safety measure. \$endgroup\$



4. You state you are using inverter, and running toaster and AC outlets. You do NOT say inverter is disconnected when not in use the parasitic draw of a 3000 watt Renogy inverter as an example, or no load current draw, is 32w. That will drain 3 100AH batteries, 3840wh, in 120 hours just sitting there, 5 days.



Discover the common reasons why your solar battery is draining quickly, including temperature impacts, charge controller issues, and more. When integrating solar panels with inverters, your main objective is to ensure stability and efficiency in power conversion. This integration is crucial as it directly impacts the performance and

INVERTER DRAINING BATTERY SOLAR



The most likely reason your battery drains frequently is that it is at the end of its lifespan or there's a connection problem. For example, if your wires aren't hooked up, it can cause problems throughout your RV. Don't let yourself get stranded while traveling. Whenever you notice your RV battery draining, you should stop and identify

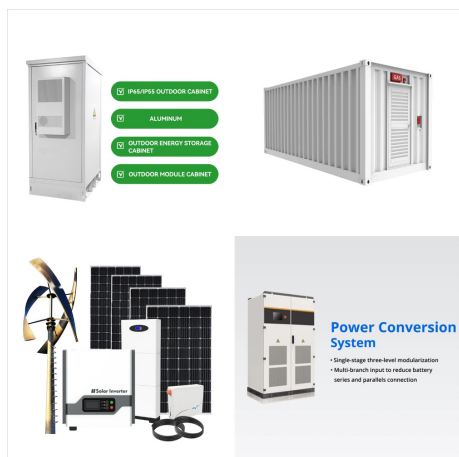


Hi newbie here, I purchased the following kit:
ECO-WORTHY 200 Watt 12 Volt Complete Solar Panel Starter Kit for RV Off Grid with Battery and Inverter: 2pcs 100W Solar Panel + 30A Charge Controller + 100Ah Lithium Battery + 600W Solar Inverter I've hooked up some outdoor patio lights to

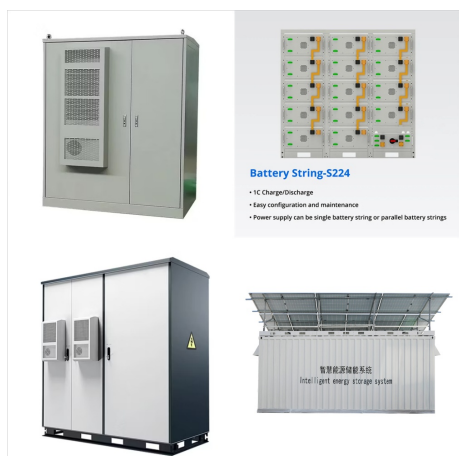


Unlike inverters, they do not draw power from the car's battery while the engine is off, reducing the risk of battery drain. Another option is solar chargers. Solar chargers use sunlight to generate electricity and can power small devices without relying ???

INVERTER DRAINING BATTERY SOLAR



Hi all, I have a Solax X1 Hybrid inverter, 2 x Triple 45Ah batteries and 5KW of panels. We have no feed in tariff here so I do not want to send anything out to the grid. Settings are: Self Use, Export 0W, charge/discharge from 00:00-23:59 Batteries charge up fine during sunlight (well, to Max



Great questions. The battery meter shows 25.8 the inverter is a little more complicated to answer and sense this forum wont seem to let me upload a video the best I can do is say that when I flip the inverter power switch on it shows 5.5v then seems to count up to about 6.8v then back down to about 5.5v (solid beep the whole time) then the display on the front of ???

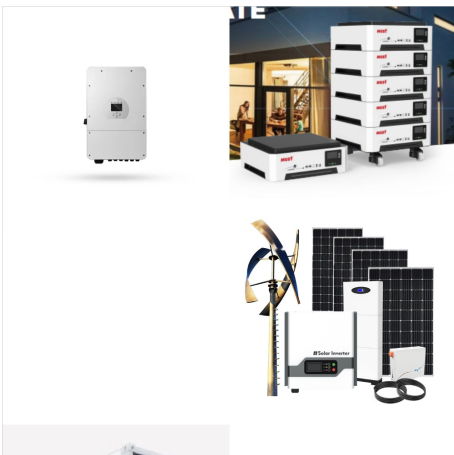


Solar battery draining too fast. Ask Question ago. Viewed 2k times 2 \$begingroup\$ I have a Bosch L5077 180 Ah, 12 V deep-cycle sealed Pb battery for my solar setup. I bought it recently (two weeks ago) but since the weather was rainy the last two weeks, and the solar panels didn't produce any significant power, I keep charging it on-grid

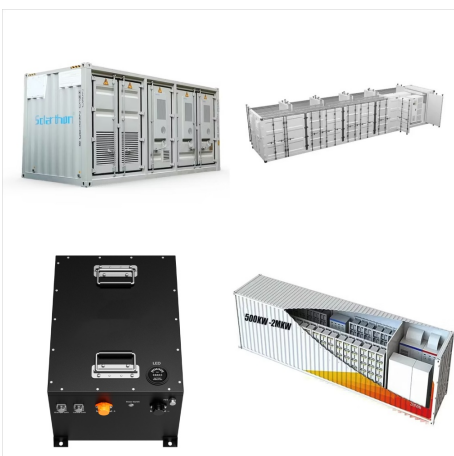
INVERTER DRAINING BATTERY SOLAR



Hi, i am testing EASun Igrid VEII 5.5kw inverter with 5KWh of li-ion storage. The problem is that when inverter is in hybrid mode and it's supposed to suck energy from grid without getting the battery involved, it slowly discharges the battery overnight.

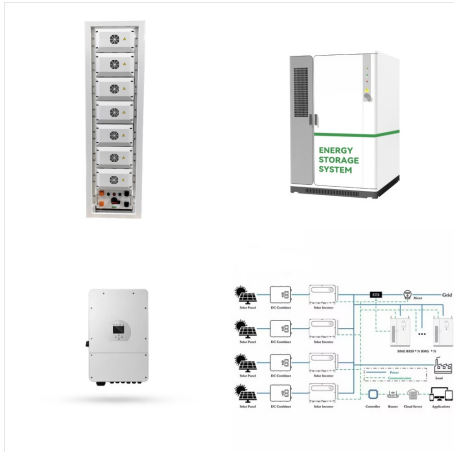


Discover the truth about power inverters and car batteries! Learn that inverters do not drain car batteries continuously, but usage depends on connected devices. Unveil vital tips like regular battery monitoring to prevent unexpected drainage and varying battery responses to inverters. Gain a deeper understanding to optimize battery health effectively.



After sun down with hardly any load the battery (ive disconnected the inverter to rule that out) voltage tails off and last night went down to 12.11v (50% soc?) this is with no load bar the SCC being connected to the batteries. you say you have a 0.8A constant drain from the charge controller. From 20:00 to 6:00 (10 hours) this sums 8A

INVERTER DRAINING BATTERY SOLAR



It's when a battery's charge is allowed to run too low or completely drain, often a result of using more energy than the solar panel is producing, leaving you with an empty battery and a power deficit. Defective Charge Controller or Inverter. Moreover, defects in associated equipment like your charge controller or inverter may also



Higher power ratings and greater power demands will result in faster battery drain. However, modern inverters are equipped. When using a power inverter, one of the main concerns is how quickly it will drain the battery. and scheduling the usage of energy-intensive appliances during periods of high solar production or low electricity rates



Hi, i am testing EASun Igrid VEII 5.5kw inverter with 5KWh of li-ion storage. The problem is that when inverter is in hybrid mode and it's supposed to suck energy from grid without getting the battery involved, it slowly discharges the battery overnight. Sometimes there is a small reading of 1A on battery discharge current in hybrid mode.

INVERTER DRAINING BATTERY SOLAR



Hello, new to the electrics/solar part of it. Recently installed a 800w solar system, mppt, and 360ah 12.8v lifepo4 batteries. Everything seems to be working fine, but using a 1700w appliance through a 3000w inverter drains from 99% to 20% of the battery bank within 60-90 seconds.



Check your inverter manual or data sheet for something like a "zero load power" or "idle load power" value in watts. Also note that a 2500W inverter on a 12V 100Ah battery only ???



If batteries are drained in the morning test each battery's individual voltage, if one battery's readings is significantly lower than normal range of voltage (11V-13V) you may have a bad battery that is acting as a "vampire drain" on the rest of the bank. Charging Batteries

INVERTER DRAINING BATTERY SOLAR



For charging, we rely mostly on a 320W solar panel wired into a Victron Energy SmartSolar MPPT 100 | 30 charger. As a backup, we also run a Victron Energy Orion-Tr Smart 12/12-18 isolated DC-DC Charger that tops up our batteries whenever the vehicle is running. While it isn't the inverter that drains an RV Battery the fastest, it's the



A good solar panel won't drain your battery; even during nighttime. If it happens the main reason is that its blocking or bypass diodes are broken and need replacement. Even then if you have a Solar Charge Controller it'll prevent battery drainage. Usually, most people's solar panels drain during the night.



DIY Solar Products and System Schematics. that you can't use a Victron Battery protector between a battery and an inverter. I need to prevent the inverter from draining an AGM battery below 50% DoD, so I need to cut it off at 11.95 or 12v. How do you accomplish that? B. Bud Martin Solar Wizard. Joined Aug 27, 2020 Messages 4,833. Jun 23, 2021

INVERTER DRAINING BATTERY SOLAR



Hybrid Inverter with Solar Battery Charging System. The load circuits are connected to the grid and storage system in a hybrid PV system. That typically requires a hybrid inverter. A hybrid inverter with a solar battery charging system works both ways: it converts DC power to AC before feeding it to the grid and the grid's AC to DC when

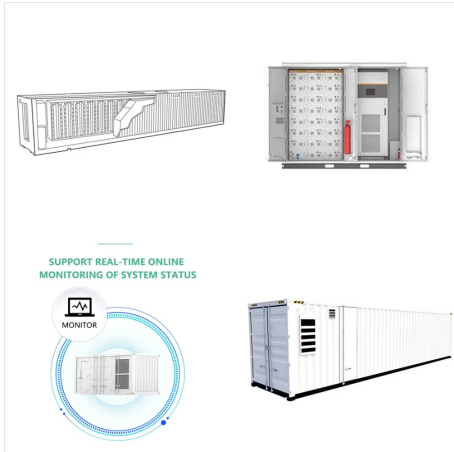


To keep an inverter from draining the battery, turn off the inverter when not in use and regularly maintain the battery. Proper usage and timely maintenance Solar Chargers: Environmentally friendly and cost-effective. Generator Sets: Powerful and versatile. Ensure your portable power source is fully charged. Keep it in a safe place for



Existing solar systems typically have solar inverters which change the DC power produced by panels to AC power that can be consumed in your home or exported onto the grid. The key difference is draining a battery all the way down to 0% can damage the system and reduce its lifespan. It's typically recommended to leave at least 10% of the

INVERTER DRAINING BATTERY SOLAR



Growatt SPF 6000 ES PLUS draining battery.
Thread starter wasconet; Start date Sep 4, 2024;
wasconet New Member. Joined Jun 22, 2024
Messages 4 Location Abuja. Sep 4, 2024 Inverter
charges battery with solar or grid, when battery is
full cut off battery and use solar or grid Only use
battery when solar and grid are not available When I
get now:



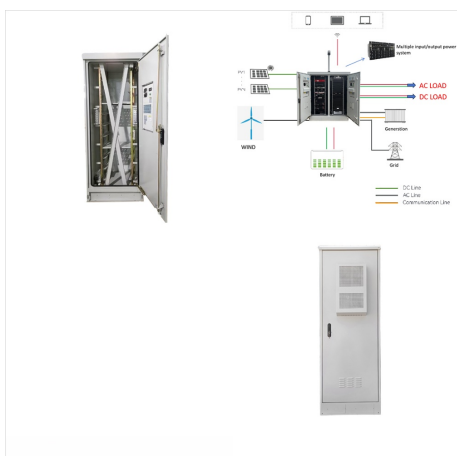
My read out via solar assistant is good when in
battery mode with about 38w self consumption and
in grid mode about the same. But if I connect the
battery in grid mode the inverter start using 125w
from the battery. This will completely drain the
battery ignoring any parameter set. Only the bms
will keep my battery safe.



Find out why solar battery drains fast and how to
prevent it in 2023. Get the best tips from solar
battery experts and make sure your battery is
always ready. What is the working mode of solar
inverter? What is Solar Water Pump? 10 Tips for
Choosing Right Solar Battery Charge Controller.
SolarGeek. Posted in: Tutorial, WiKi. Leave a Reply



With the rising popularity of solar chargers as a renewable and portable charging solution, a common concern is whether connecting a solar charger to a battery can end up draining it instead of charging it. This is an important question to address, especially for those relying on solar power in remote or off-grid locations. Yes,



Although solar energy has become increasingly popular nowadays, one common issue faced by many solar power users is the rapid draining of their solar batteries. If you face the same issue with your solar battery, you might wonder what went wrong. The rapid draining of solar batteries can happen due to several factors, ranging from



3. Hybrid Inverter - battery ready. Hybrid inverters, sometimes called battery-ready inverters, combine a solar and battery inverter in one simple unit. These inverters are becoming more competitive against solar inverters as hybrid technology advances, and batteries become cheaper. See the detailed hybrid/off-grid inverter review for more