



REC presents the REC460AA PURE-RX (FULL BLACK) solar module, boasting an impressive power rating of 460 watts, ensuring optimal utilization of solar energy. This solar module, offering an efficiency rating of 22.09%, ensures optimal solar ???



W Alpha Pure-RX HJT ??? REC460AA Pure-RX (30mm frame) The REC Alpha Pure-RX is REC's most powerful residential solar panel, combining high power output with practical handling in a sleek, all-black design. With a compact form factor, it delivers 460W and offers an impressive power density of 221W/m² (generates more clean energy from



With a vast market and plenty of manufacturers to choose from, finding the right solar panel model can be hard. Many solar panel installation companies offer more than one brand of solar panels. In fact, the SolarReviews Solar Industry Survey found that one of the most common choices offered by installers is between Qcells and REC panels.

INVERTER FOR REC 4600AA PURE RX SOLAR PANEL



When it comes to solar panel longevity, REC Group's Alpha HJT products, including the new REC Alpha Pure-RX, set a new standard. Most TOPCon solar panels on the market degrade at a rate of 0.4% per year and offer 89% power output after 25 years. REC's Alpha HJT panels guarantee at least 92% power output after the same period.

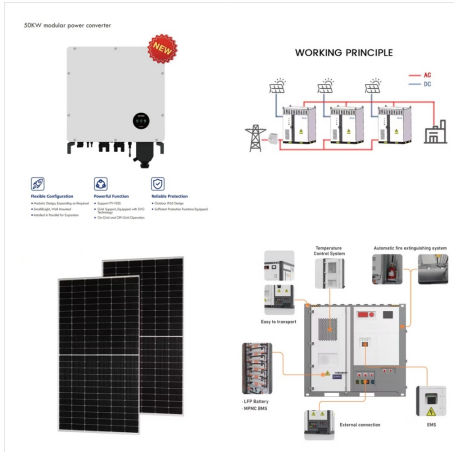


No wonder REC has declared the Alpha Pure-RX its most powerful residential solar panel to date. Furthermore, at 22.6%, the Alpha Pure-RX's panel efficiency is higher than most commercial solar panels, which average 11% to 15%. So, this model is one of the most efficient solar panels for residential solar users in 2023.



The REC Alpha Pure R Series Solar Panels are anti-LID (Light Induced Degradation) and have a temperature coefficient of only $-0.26\%/^{\circ}\text{C}$ at 44°C (its Nominal Module Operating Temperature). Temperature coefficients vary from $-0.3\%/^{\circ}\text{C}$ to ???

INVERTER FOR REC 4600AA PURE RX SOLAR PANEL



Production of this newest solar panel is set to start in January 2024 at REC's Industry 4.0 fab in Singapore. With an increased power density of 226 W/m² or 21 W/ft², the REC Alpha Pure-RX is REC's fourth product innovation based on its Alpha HJT technology and exemplifies REC's mastery of HJT, first launched in 2019. As with REC's



Elevate your home energy with the REC Alpha Pure-RX 460W solar panel. This sleek, high-performance panel boasts unmatched efficiency, durability, and a 25-year warranty. Its innovative design and superior performance make it the perfect choice for homeowners seeking energy independence and a reduced carbon footprint.



REC's most powerful residential solar panel, the REC Alpha Pure-RX hits the sweet spot between high power and practical handling, in an elegant full-black design. Reaching 470 W in a compact form factor, it boasts an impressive power density of 226 W/m², with 22.6% panel efficiency.

INVERTER FOR REC 4600AA PURE RX SOLAR PANEL



Solar Panels. REC Products. REC Alpha Pure-RX. 450-470 Wp, HJT technology, 2.08 m2, 22.6% max. efficiency, 92% min. power in year 25. A detailed explanation of what makes the REC Alpha Pure-RX Series different and gives it such a high performance. eng. esp. deu. fra. ita. ned. pol. swe. eng_us.

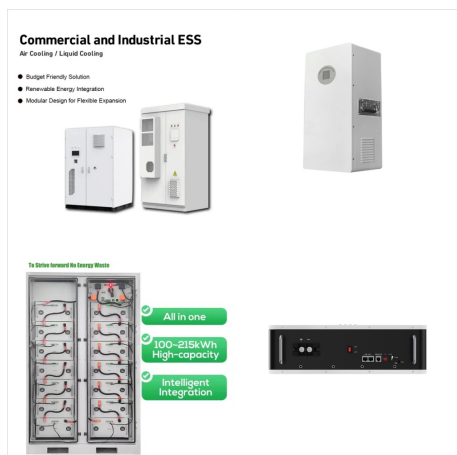


REC REC460AA PURE RX: "REC460AA PURE RX - Reliable solar panel for green energy." Skip to main content. Fast Delivery! Order in-stock items before 7 p.m. CST Monday thru Thursday - get the next day! REC Solar REC460AA-PURE-RX 460W Solar Panel. Out of Stock More Info | Check Warehouses. Brand REC Solar. MFG # REC460AA-PURE-RX. Werner Part

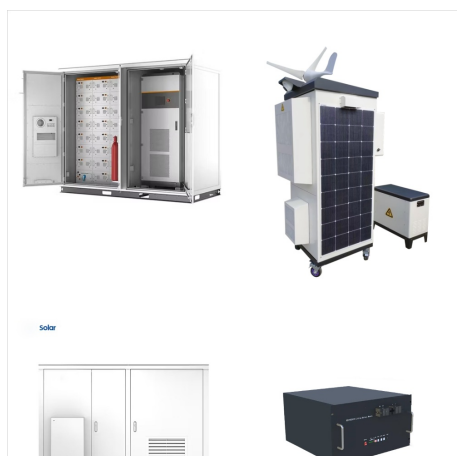


The REC Alpha Pure-RX panels are compatible with a wide range of solar inverters and mounting systems, making them easy to integrate into new or existing residential solar installations. With a module current of 9 A, these panels are also suitable for use with module-level power electronics (MLPE) devices, such as microinverters and power

INVERTER FOR REC 4600AA PURE RX SOLAR PANEL



We have an image for REC Solar Pte Ltd REC460AA Pure-RX - See below for a reference of what this panel may look like (can differ depending on date and manufacturer). We have found a datasheet on file for REC Solar Pte Ltd REC460AA Pure-RX solar panels - See below link to download the PDF file. We have a datasheet for REC Solar Pte Ltd REC460AA



REC Alpha Pure-RX es un panel solar con tecnologíaa HJT Gapless sin soldaduras ni bus-bars entre c?lulas, con un rendimiento y durabilidad superior. Con triple garantíaa de 25 a?os (producto, potencia y sustituci?n) del mercado. Benefíciate del mejor precio, en SunFields somos Distribuidor Oficial de paneles solares REC.



Wp | Heterojunction (HJT) The REC Alpha Pure-RX 470 Wp is a HJT solar panel technology frontrunner. Its exceptional efficiency, temperature resilience, low-light performance, and impressive warranty make it a compelling option for Australian homeowners seeking to maximise their solar investment. While the upfront cost might be slightly higher, the ???

INVERTER FOR REC 4600AA PURE RX SOLAR PANEL



Shop for REC Group REC-460-AA-PURE-RX at Inverter Supply for best prices online. REC Group REC-460-AA-PURE-RX, REC Group, REC-460-AA-PURE-RX, REC 460w 9 A module with black frame and black back sheet. 88 half-cut bifacial REC cells., REC Solar Panels . 888-606-2149. Log In; Order Status. About. Contacts. Manufacturers; AIMS Power. AIMS 12 Volt



Solar Panels. REC Products. REC Alpha Pure-RX. 450-470 Wp, HJT technology, 2.08 m2, 22.6% max. efficiency, 92% min. power in year 25. REC Alpha Pure-R. 400-430 Wp, HJT technology, 1.93 m2, 22.3% max. efficiency, 92% min. power in ???



For comparison, most solar panels are built to operate at 86% after 25 years. How much do REC solar panels cost? REC solar panels tend to be pricier, with installations costing between \$3.20 and \$3.60 per watt on average. For an average-sized solar panel system, that's around \$22,000 when purchased with cash.

INVERTER FOR REC 4600AA PURE RX SOLAR PANEL



REC Alpha Pure-R Conventional Panel 92% 84.8% 70% 0 5 10 15 Year 20 25 75% 80% 85% 90% 95% 100% 98% % of Nameplate power 20 year product warranty Extra 5 years with solar materials and panels. REC is headquartered in Norway with operational headquarters in Singapore and regional hubs in North America, Europe, and Asia-Pacific.



All you need to know about the REC Group REC Alpha Pure RX REC 460 solar panel including rating, cost, efficiency, and warranty terms. Compare inverters Solar incentives See all REC Group Solar Panels See all Solar Panels. REC Group (12)



Been looking at a solar installation with the REC Alpha Pure 400W panels. I've received two proposals from different installers with different Microinverter selections and I'm trying to figure out if one is even valid. One proposal is using the IQ7+ micro (295VA) and the other is ???

INVERTER FOR REC 4600AA PURE RX SOLAR PANEL



W Solar Panel 88 Cell Bifacial AA-PURE-RX-460W
at A1 SolarStore. Menu; Store. Store; Solar panels .
Back. Wattage. 360 watt; REC 460W Solar Panel
88 Cell Bifacial AA-PURE-RX-460W. \$0 (2) Q& A.
Specification ???



Series: REC Alpha Pure RX; Model: REC 460
Excellent Manufacturer Reviews (12) Rated Power:
460W; Efficiency: 22.1%; Details Compare REC
Group Alpha Pure 405AA The EnergySage
classification system incorporates technical
specifications for solar panels, inverters and
batteries to compare their performance, durability,
warranty and overall



Discover the REC ALPHA PURE Black solar panel
from the innovative Pure-RX series. This advanced
panel utilizes state-of-the-art cell technology with
heterojunction half-cells and lead-free gapless
technology to deliver exceptional performance in all
climates.

INVERTER FOR REC 4600AA PURE RX SOLAR PANEL



The REC Alpha Pure-RX panels are available in 460W and 470W models, providing exceptional power generation for residential solar systems. Impressive Efficiency With a panel efficiency of up to 22.6%, these panels make the most of available roof space, generating more clean energy for your home. Innovative HJT Cell Technology



The REC Alpha Pure-RX N-Type 460W solar panel is a cutting-edge renewable energy solution designed to maximize efficiency and durability. Featuring advanced N-Type heterojunction cell technology, this high-performance panel offers an impressive 460 watts of power in a residential profile. With its superior low-light pe