

Why is my SolarEdge inverter blinking green?

A blinking green light on your SolarEdge inverter usually means that it is initializing or searching for a grid connection. This is normal and should stop after a few minutes. If it does not stop or if there is an error message on the display, you may need to contact your installer or SolarEdge customer support for assistance.

How do I know if my power inverter is working?

For the Power inverter check the green light on the front of the inverter: Two solid green lights mean the inverter is on and is working. Blinking green light means input voltages are lower than the preset value and the inverter goes on hold for 30 seconds. After that, the inverter will be turned off and the red light will be ON.

What does a red LED on a solar inverter mean?

Any combination of LEDs on condition that the blue LED is on. Any combination of LEDs on condition that the green LED is on. Any combination of LEDs on condition that the red LED is on. Your inverter has a switch and three colored LEDs that indicate information such as performance and errors. Learn what they mean. | SolarEdge US

What does a red light on a DC inverter mean?

After switching the inverter on, the "Red" light illuminates, but the "Green" light stays off, and the cooling fan does not run. One of the following DC Input conditions may exist: A short circuit exists to the inverter, and the Red light indicates that the overcurrent protection is active.

What does a green light mean on an inverter?

The "Green" light is illuminated, but the cooling fans are generating excessive noise. Noise from the inverter cooling fans will increase as the inverter components heat up under operating conditions. If the condition persists, the inverter may overheat, and the Red light will illuminate as the inverter shuts down.

What does a flashing green light on a SolarEdge inverter mean?

A flashing green light on a SolarEdge inverter typically indicates that the inverter is in the process of being initialized or is searching for a connection to the utility grid. This is a normal operating state.

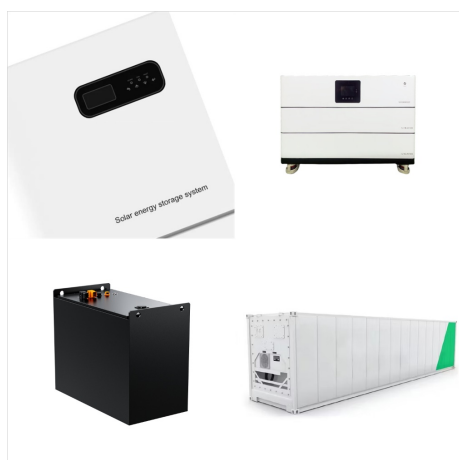
# INVERTER GREEN LIGHT BLINKING WITH SOLID RED LIGHT



Green LED light: Pulsing: The high-voltage battery is being charged. Continuously lit: Charging process successfully completed. Flashing: Time-delayed charging activated. Charging process not yet started. Lights up alternately with red indicator: Charging with reduced current to prevent a vehicle breakdown.



Green light Red light Cooling fan Work normally on off on Over-high temperature off on on breakdown off on off (1)In the case of no-load, common faults are: A. When the power is turned on, both the green light and the red light are not on. The cooling fan doesn't run. Analysis: 1) The input power may not be connected or abnormal;

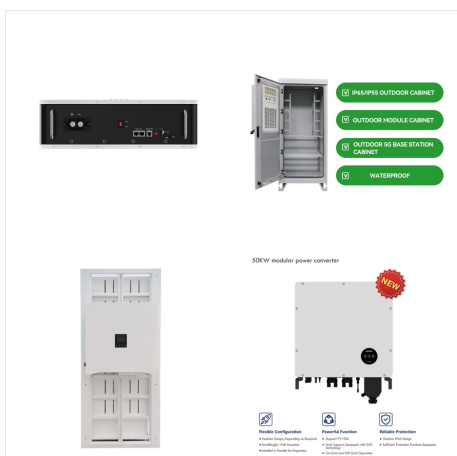


So there was a electrical fire and melted all the wires (ac feed to combo box) I went out to do a inspection for replacement and all the micros are flashing red/green red/green red/green. Back n forth. Breakers are off I'm wondering are those a indication they are toast. I've never seen tha in 17years doing emphase.

# INVERTER GREEN LIGHT BLINKING WITH SOLID RED LIGHT



Solid Red and green light on solaredge inverter So the last two days, one of the two inverters had an issue. Yesterday it started showing a solid red and green light instead of the usual green and blue.



A blinking green light on your SolarEdge inverter usually means that it is initializing or searching for a grid connection. This is normal and should stop after a few minutes. If it does not stop or ???



Inverter; Microinverter +1 more; Like; Answer; Share; 1 answer; 1.3K views; Ananth Karthik (Moderator) Edited March 30, 2023 at 4:54 PM. Hello @Coyle\_5730, A flashing red status in a microinverter can mean that your AC grid is not present or not within specification. Ensure the Microinverter is properly connected to the Q cable, and the Q

# INVERTER GREEN LIGHT BLINKING WITH SOLID RED LIGHT



Fujitsu Operation Light Flashing 10 Times. Fujitsu Operation Light Flashing 10 Times indicates that the unit has detected a fault and needs to be serviced. The flashing light usually indicates a malfunction in the system's internal components, such as a defective fan or overheating issue.



Solid Green Light: AC is being turned on. A stagnant green light on your AC system simply means your air conditioner is running smoothly without any issues detected. Solid Red Light: The AC unit is being turned off. It indicates a ???



Green light when all microinverters are producing power. Flashing green when an upgrade of the microinverters is in progress. Solid Red if one or more microinverters stopped producing power. Flashing red when microinverters ???

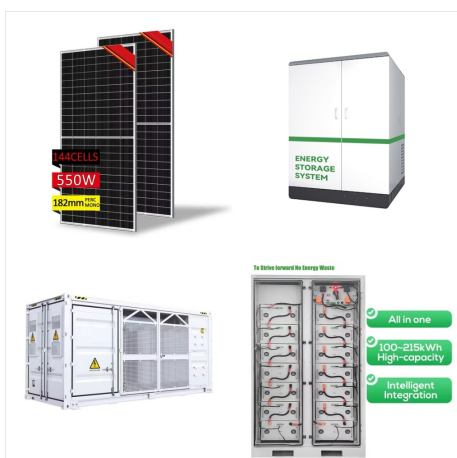
# INVERTER GREEN LIGHT BLINKING WITH SOLID RED LIGHT



The PLC should have 3 green flashing lights. If they are solid or not lit, the Adaptor may not be working properly. If plugging or unplugging doesn't work, or you do not have PLCs, give us a call at 802-882-8685 .



1. Solid Red Light: If the red light on your Goodman furnace stays solid, it indicates that the furnace is receiving power and is in standby mode. This is normal and not a cause for concern. 2. Slow Blinking: A slow blinking red light indicates that the furnace is in normal operation mode. This means that the furnace is functioning properly and



Newmar Dutch Aire. On the Magnum inverter control panel, I have always noticed the green "CHG" light to be solid during charging. Magnum inverter CHG light flashing? iRV2 Google Click Here to Login: Register When I first start the generator it charges at 100a and the light is solid, all normal, and the transformer temp rises to



# INVERTER GREEN LIGHT BLINKING WITH SOLID RED LIGHT



Solid (Green) The IQ Battery is not charging or discharging, and the battery level is above 75%.  
Slowly flashing (Blue) The IQ Battery is discharging.  
Slowly flashing (Green) The IQ Battery is charging.  
Rapidly flashing (Yellow) The IQ Battery is starting up or connecting with the IQ Gateway. Flashing in a sequence of two (Red)



I thought the Charge green light usually stays solid, which it was this afternoon while I was going through all the buttons and settings on the Magnum Energy but tonight the green light is flashing propane regulator red green ind. stays green: SahuaritaDon: RV ???



1. So, What Does a GFCI Outlet Blinking Red Light Mean? A blinking red light will happen in the following scenarios: The red light on the GFCI outlet may be blinking during the first self-test it makes after being powered up for the first time. The red light will blink (or stay solid) if the GFCI outlet has been tripped.

# INVERTER GREEN LIGHT BLINKING WITH SOLID RED LIGHT



PV system operators and installers receive fast support when they need it via our new SMA Online Service Center. You can use this to contact our Service team, look at the status of your service cases and access information on products, innovations and software updates.



The inverter is equipped with a dynamic power display via the green LED. Depending on the power, the green LED pulses fast or slow. If necessary, you can switch off the dynamic power display via the green LED.



Reset the inverter. Remove AC power to the coach. There is a button on the inverter that must be pushed and held until the blinking green light stays constant. Then release the button. This is the soft reset. If that doesn't work, then you must remove DC power to the inverter by removing the + battery cable, wait then reconnect.

# INVERTER GREEN LIGHT BLINKING WITH SOLID RED LIGHT



LED Indication: Red light flashing slowly, Green light flashing quickly. What to Do: Inspect the flame sense rod and the flame sensor. It's also advisable to check the gas pressure to ensure it's within the proper range. High Limit Switch Open. LED Indication: Red light flashing slowly, Green light solid.



One common issue is a blinking green light on the control panel. There are a few different things that could be causing this issue. It could be something as simple as a loose wire or it could be more serious like a compressor problem. If you notice your mini split's green light blinking, here are a few things you can try:



Understanding these LED lights will help you troubleshoot any issues, including the blinking green light. Here is an overview of the various LED lights on the unit: Power LED: This LED indicates whether the unit is powered on or off. A solid green light means the unit is powered on, while no light or a red light indicates a power issue.



# INVERTER GREEN LIGHT BLINKING WITH SOLID RED LIGHT



Blinks 5 Flashes Inverter Failure 2 Flashes Blinks  
IPM Failure Blinks 5 Flashes Inverter Failure 5  
Flashes Blinks Compressor Failure All Other  
Wireless Indoor Units AUY, ABY & AWY Models.  
Including Multi Systems (Not J Series or VRF) Red  
Light Operation Green Light Timer Yellow Light  
Swing On Normal On Slow Blink Slow Blink Test



Solar Panel Red Charge Light Flashing Rapidly:  
vettenuts: Newmar Owner's Forum: 3: 05-30-2018  
09:04 AM: Tripp-Lite inverter shutting down flashing  
red: kdcnett: Sprinter Chassis Forum: 3: 09-19-2016  
03:29 PM: 2003 Monaco Windsor red warning light  
on dash flashing: roger50005: Monaco Owner's  
Forum: 12: 06-06-2015 09:03 PM: Box under Dash  
w/ ???



One of two new BA6720T 12Ah batteries is  
displaying solid red. It's not too hot. The other five  
batteries in my Z6 are fine. When plugged into the  
charger, it displays Red, and then shows the normal  
green display charging pattern and then red again.  
Press and hold the button for 5 seconds and it  
shows green charged.

# INVERTER GREEN LIGHT BLINKING WITH SOLID RED LIGHT



Question: What does a blinking green light mean in the fuse box? It was solid and when service person told us to do a reset to figure out our inverter problem it hasn't been the same since. It used to just be a solid green light. We did another reset, it was solid for awhile, but just goes back to green blinking.



Solid Green Light: AC is being turned on. A stagnant green light on your AC system simply means your air conditioner is running smoothly without any issues detected. Solid Red Light: The AC unit is being turned off. It indicates a system shut down if you press the power button on the control panel or remote control. Flashing Green Light Only: 1



Green (A): The "Ready" status, illuminates when the utility is present and the unit is in auto. This light also flashes when there is an outage and the unit is running. Red (B): The "Alarm" status, illuminates when the ???