



The INVL Renewable Energy Fund I, which is managed by INVL Asset Management and invests in renewable energy projects, signed an agreement with Kommunalkredit Austria AG (Kommunalkredit) on a loan



The INVL Renewable Energy Fund I managed by INVL Asset Management has concluded an agreement on the acquisition of a solar farm project in Romania with a capacity of 174 megawatts (MW). Latest acquisition will increase total investments in the fund's projects in Romania, which may reach approximately EUR 350 million.



The INVL Renewable Energy Fund I, which is managed by INVL Asset Management and invests in renewable energy projects, signed an agreement with Kommunalkredit Austria AG (Kommunalkredit) on a loan of EUR 25 million. The proceeds of the loan will be used to finance the construction of solar power plants with 51 megawatts (MW) capacity in Romania.



The purchase will expand INVL Renewable Energy Fund I's capacity under development in Romania to 442.7 MW. The total includes eight solar projects, of which 268 MW have grid connection conditions and 42.7 MW with building approvals. The fund expects building works for the whole bundle to be completed by end-2025.



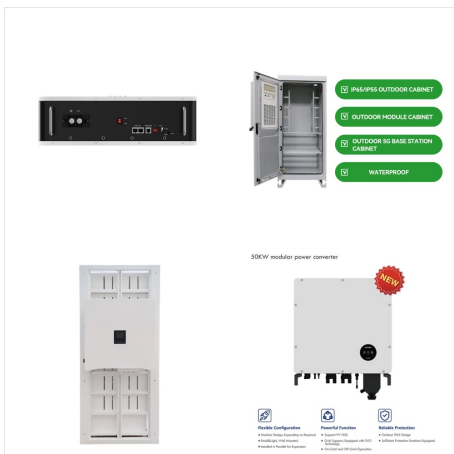
Šiuo metu INVL Renewable Energy Fund I koncentruojasi Rumunijos ir Lenkijos rinkas, kuriose fondo valdytojai mato didelį augimo potencialą. Šiose rinkose dėl elektros energijos gamybos balanso specifikos yra reikalingi nauji elektros gamybos pajėgumai, valstybės palaiko atsinaujinančios energetikos plėtrai.



INVL Renewable Energy Fund I obligacijos investuotojams bus platinamos nuo rugsėjo 8 iki 18 dienos. Lenkijoje fondas investuoja į projektus, kurių bendra galia siekia 33 megavatus (MW), Rumunijoje – 451 MW. Bendros investicijos, valdomų projektų portfelis sieks apie 350 mln. eurų.



Investuotoj?? pasitik??jimas m?<s?? fondu ir investicijomis ?? atsinaujinan??i?? energetik?? leis mums ??gyvendinti numatytus projektus", ??? sako ???INVL Renewable Energy Fund I" vadovaujantis partneris Liudas Liutkevi??ius. ???INVL Renewable Energy Fund I" vysto daugiau nei 33 megavat?? (MW) galios saul??s park?? projektus Lenkijoje.



Under the INVL Renewable Energy Fund I's investment strategy, investors' money is being put to work in renewable energy projects (on-shore wind and utility-scale solar farms) in EU territory. The fund is currently ???



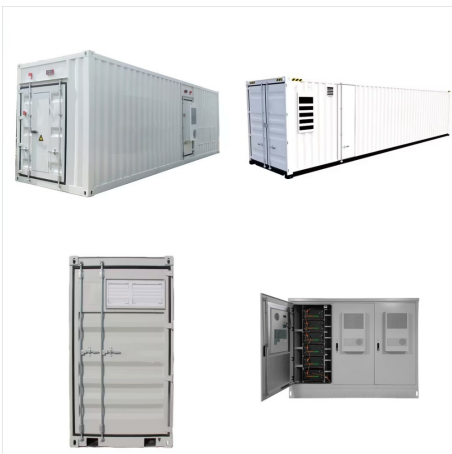
Managing Fund partner at INVL Renewable Energy Fund I (INVL REFI) ? I'm result focused doer with 18+ years of top managerial experience and proven track record in value creation. I follow the rule ??? keep things simple and get it done! ? Experience: Via Lietuva ? Education: Vilniaus universitetas / Vilnius University ? Location: Vilnius ? 500+ connections on LinkedIn.



The INVL Renewable Energy Fund I was established on 20 July 2021 by INVL Asset Management, the leading alternative asset manager in the Baltic States, as a sub-fund for informed investors. It



INVL Renewable Energy Fund I, managed by INVL Asset Management, has signed an agreement for a €25 million loan package from Kommunalkredit Austria AG to finance the construction of solar power



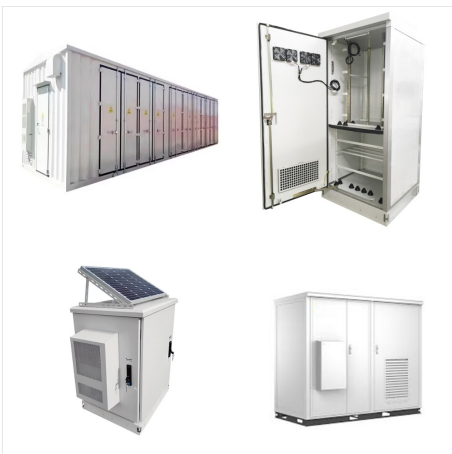
That will create opportunities to work together with renewable energy project developers." The solar energy projects in Romania that are being added to the fund's portfolio already have approved grid connection conditions. The INVL Renewable Energy Fund was established by INVL Asset Management in July 2021.



INVL Renewable Energy Fund I, administrat de INVL Asset Management ??i care investe??te ?n proiecte din domeniul energiei regenerabile, continu?? s?? investeasc?? activ ?n Rom?nia ??? a semnat dou?? contracte pentru achizi??ia a ??ase proiecte de parcuri solare cu o capacitate total?? de 102,7 megawa??i (MW).



???INVL Asset Management" valdomas ?? atsinaujinan??ios energetikos projektus investuojantis fondas ???INVL Renewable Energy Fund I" toliau aktyviai investuoja Rumunijoje ??? pasira???? dvi sutartis d??l 6-i?? saul??s park?? projekt??, kuri?? bendra galia sieks 102,7 megavat?? (MW), ??sigijimo, ra??oma ???INVL Asset Management" prane??ime spaudai.



The INVL Renewable Energy Fund I was established on 20 July 2021 by INVL Asset Management as a sub-fund for informed investors. It invests in early- and mid-stage renewable energy projects (solar and wind), including the construction of new power plants, the development and/or acquisition of the infrastructure necessary for the operation of



The INVL Renewable Energy Fund I which is under managed by INVL Asset Management and invests in renewable energy projects raised a further EUR 5 million from investors to reach a size of EUR 57.9



???INVL Renewable Energy Fund I" koncentruojasi ?? Rumunijos ir Lenkijos rinkas, nes jose fondo valdytojai mato didel?? augimo potencial???. ?iose rinkose d??l elektros energijos gamybos balanso specifikos yra reikalingi nauji elektros gamybos paj??gumai, valstyb??s palaiko atsinaujinan??ios energetikos pl??tr??.



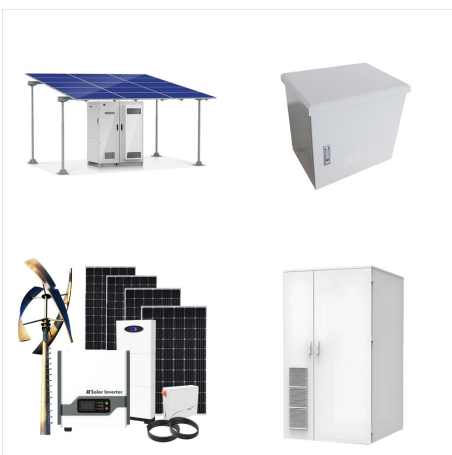
The INVL Renewable Energy Fund I which is managed by INVL Asset Management and invests in renewable energy projects is starting a new offering of fund units. The units are being distributed by the INVL Family Office.



Lithuania's INVL has raised an additional 18.3 million for its renewable energy fund, bringing its total size to 52.9 million. The fund is focused on the Romanian and Polish markets, where the firm sees growth potential.



International law firm CMS has advised INVL Renewable Energy Fund I, a fund investing in renewable energy projects, on securing a EUR 24.4 million financing package from the European Bank for Reconstruction and Development (EBRD) and Eiffel Investment Group through Paris-based Eiffel Investment Group's Energy Infrastructure Investment Fund.



INVL Renewable Energy Fund I. Finansų rinkos dalyvių prie 3/4 išskaita Finansų rinkos dalyviai UAB 3/4 darojo tipo informuotiesiems investuotojams skirta sudėtinio investicinio fondo "INVL Alternative Assets Umbrella Fund" subfondas - "INVL Partner Private Equity Fund I" (1174)



Fund Partner at INVL Renewable Energy Fund I ?
Experience: INVL Renewable Energy Fund I ?
Education: Vilniaus Universitetas ? Location:
Lithuania ? 348 connections on LinkedIn. View
Linus Tomkevicius" profile on LinkedIn, a
professional community of 1 billion members.



The INVL Renewable Energy Fund I managed by
INVL Asset Management has concluded an
agreement on the acquisition of a solar farm project
in Romania with a capacity of 174 megawatts (MW).
Latest



The INVL Renewable Energy Fund I was
established on 20 July 2021 by INVL Asset
Management as a sub-fund for informed investors. It
invests in early- and mid-stage renewable energy
projects (solar and wind), including the construction
of new power plants, the development and/or
acquisition of the infrastructure necessary for the
operation of