



Electrical Metal Enclosures & Steel Junction Boxes

A metal cabinet or box that shields electrical or electronic equipment and guards against electric shock is known as an electrical metal enclosure. Typically, enclosures are built of stiff polymers or metals like aluminum, steel, or stainless steel. Protection against hazardous, non-hazardous, and other specified ???



Buy IP65 Junction Boxes at Screwfix . 30 day money back guarantee. 60 days free credit available. The UK's leading retailer of trade tools and hardware. Electrical & Lighting. Bathrooms & Kitchens. Outdoor & Gardening. Screws, Nails & Fixings. Security & Ironmongery. IP Rating. IP2X (3) IPX2 (1)



Here are some examples of how you might use these electrical enclosures: Outdoor Electrical Junction Boxes ??? In construction, infrastructure, and telecommunications, use an IP-rated enclosure to protect electrical connections from the weather and even temporary immersion during heavy rain or flooding.



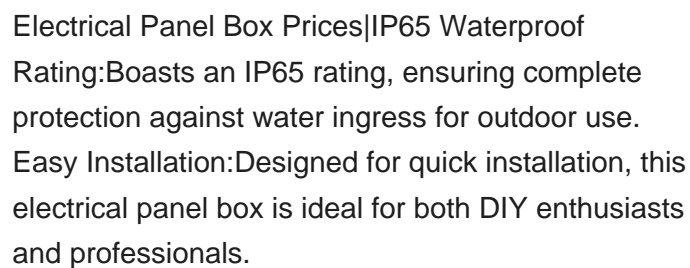
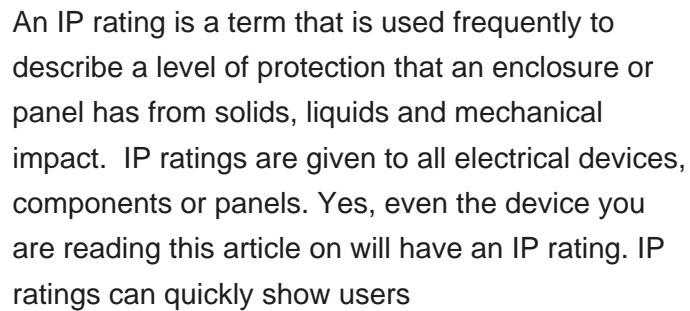
All of our enclosures have some sort of weatherproofing. The level to which your enclosure will protect your electrical items is covered by the enclosures IP rating. To get the low down, check out IP ratings explained. To help you on your way, this page highlights what you should be looking for if you want your enclosure to be weather or water



IP Enclosures is a leading Australian electrical enclosure brand. We supply electrical enclosures and electrical cabinets. We also supply 19" rack cabinets, field cabinets and can supply custom electrical enclosures to suit project ???



The IP ratings table below explains what each digit in a conventional IP code indicates. This ingress protection chart will help you understand the precise threats and scenarios that a certain item's mechanical or electrical components should be protected against, as well as how much protection is required in what types of environments.

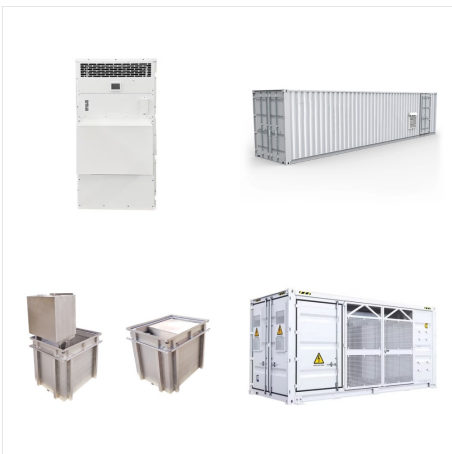




KDM manufactures a wide range of IP-rated enclosures. Some of our most popular products are the IP65 rated enclosures. They are moderately waterproof, shielding your electrical appliances from indoor and outdoor hazards. Specifically, KDM IP65 electrical enclosures guarantee protection against water jets. Plus, our IP65 enclosures are fully



The IP rating system is described in the international standard EN 60529. An example of a typical IP rating is IP65. The two numbers indicate the degree of defense an enclosure offers against external liquid and solid items. The first digit represents solids. For instance, the six indicates that our IP65 junction box is completely dust



The industrial junction box with two bulkhead cutouts works with N206-Series industrial Cat5e/6 patch cables and N206-BC01-IND bulkhead coupler or N206-KJ01-IND keystone jack, the U325-Series industrial USB 3.0 cables and U325-000-IND bulkhead coupler and P569-000-FF-IND bulkhead coupler and P569-Series industrial 4K HDMI cables (all sold separately).



An IP rating of 69 is as high as it goes, and this will satisfy the vast majority of use cases. When in doubt, it's a good rating to consider. Of course, it's a matter of use cases. You can select an IP rating according to the exposure facing your electrical enclosure. If you need more water protection, move up the scale.



IP65 electrical enclosures offer immense versatility in resisting any-size debris, dirt, windblown dust, and low-pressure water jets. KDM offers IP65 rated boxes and enclosures made with 1/2
English Arabic French
Spanish Japanese



IP65 electrical enclosures offer immense versatility in resisting any-size debris, dirt, windblown dust, and low-pressure water jets. As such, KDM IP65 enclosures perform well in a variety of applications: domestic, commercial, industrial, agricultural, energy, and more. KDM offers IP65 rated boxes and enclosures made with stainless steel



IP Rating. NEMA Rating. Series. Electrical Enclosures PC+10% Fiberglass Box, Stainless Steel Latch, Clear Cover (10.2 X 6.3 X 3.9 In) Mfr. Part No. PTQ-11050-C. Mouser Part No 563-PTQ-11050-C. Bud Industries: Electrical Enclosures PC+10% Fiberglass Box, Stainless Steel Latch, Clear Cover (10.2 X 6.3 X 3.9 In) [Learn More about Bud Industries](#)



Overview. AZE is a leading, high-quality IP rated or NEMA type weatherproof electrical enclosures, all-in-one ESS solution, solar energy and lithium battery cabinet manufacturer in China, we provide wall mounted, pole mounted or floor-standing electrical enclosures, telecom cabinets, battery storage rack enclosures up to IP66 or NEMA 4/4X type.



Cape Electric specializes in non-metallic IP rated Junction boxes and panels that are durable, reliable, and perfect for a wide range of applications. Discover top-quality electrical solutions designed to meet your needs with Cape Electric. Mon ???



What IP rating do I need for critical infrastructure enclosures? Typically, IP ratings of between 44 and 65 may be used for both indoor and general outdoor use. Anything lower than IP44 should only be used indoors. However, the specific IP rating will depend on a ???



IP is the acronym for Ingress Protection, those letters are followed by two-digit numbers determining its grading. As mentioned above, this rating system is defined by an international standard EN 60529. The IP rating applies to an electrical item and states the level of protection and resistance to different types of unwanted intrusions: to users from mechanical or electrical ???



IP65 electrical enclosures offer immense versatility in resisting any-size debris, dirt, windblown dust, and low-pressure water jets. KDM offers IP65 rated boxes and enclosures made with stainless steel, mild steel, English Arabic French Spanish Russian Japanese Portuguese Indonesian Korean.



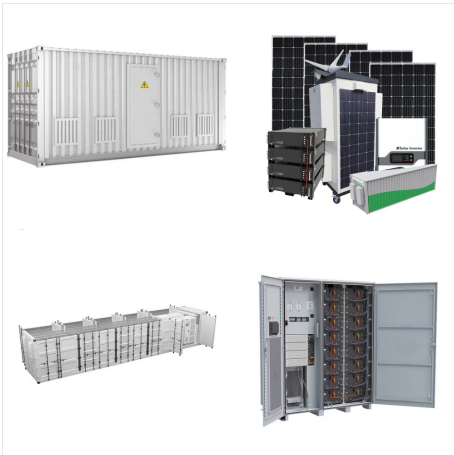
HP-110706 IP-rated enclosure available in black or gray polycarbonate with a hinged cover. Same Day Shipping On in-stock orders placed by 3:00pm EST (Monday-Friday) HP-110706 IP66 Hinged Electrical Box. 11 x 7 x 6 in. Electrical enclosure available in gray or ???



Rated 4+ stars; Purchased often; Project Box, 4pcs Junction Boxes, IP65 Waterproof Electrical Boxes, ABS Plastic Dustproof Electrical Project Case Power Junction Boxes with Fixed Ear for Outdoor Electronics - 3.3x2.3x1.37. 4.5 out of 5 stars. 99. 100+ bought in past month. \$8.59 \$???



What is IP Protection? "IP" stands for "ingress protection." This is the degree to which the instrument can withstand the invasion of foreign matter. The IP rating system was established by the IEC (International Electrotechnical Commission). It is the IEC standard 60529, used as a guide to help to protect the life of the instrument.



IP65 electrical enclosures offer immense versatility in resisting any-size debris, dirt, windblown dust, and low-pressure water jets. KDM offers IP65 rated boxes and enclosures made with acero inoxidable, mild steel, English Arabic French Russian Japanese Korean Portuguese Spanish. Desplazarse hacia arriba. Env e su consulta hoy. Subir



OKW IP65, IP66 and IP67 rated enclosures are tested in accordance with the international standards VDE 0470 PART 1 / EN 60529 / IEC 529. View range.. Mini-Data-Box 40x40x15mm - 70x50x20mm Easytec 101x50x22mm - 172x93x46mm Net-Box 140x140x46mm - 220x220x50mm Solid-Box 135x115x50mm - 225x175x70mm. Smart-Box



IP65 electrical enclosures offer immense versatility in resisting any-size debris, dirt, windblown dust, and low-pressure water jets. As such, KDM IP65 enclosures perform well in a variety of applications: domestic, commercial, industrial, ???



JAPANESE; ENGLISH; POLISH; CLOSE; menu.
TOP > NEMA 4X stainless steel enclosure,
SUS304 stainless steel box, Electrical box. IP65
enclosure with screw fixing front door. Made of
SUS304 stainless steel for superior weather ???