



British overseas territory in the Southern Atlantic Ocean. This page was last edited on 27 November 2024, at 11:44. All structured data from the main, Property, Lexeme, and EntitySchema namespaces is available under the Creative Commons CC0 License; text in the other namespaces is available under the Creative Commons Attribution-ShareAlike License; ???



Frequently asked questions. Want to know about travelling to South Georgia and the South Sandwich Islands? We have put together a list of the most frequently asked questions from our users such as: What is the cheapest mode of transport?, What is the quickest option?, How much do tickets usually cost? and many more.



South Georgia, sometimes referred to as Isla San Pedro, is an island that is located in the South Atlantic Ocean and is part of the British administration of the South Sandwich Islands and part of the British Overseas Territory of South Georgia. The island is located 1400km from the Falkland Islands and is about 170km long and 35km wide.

IP55 OUTDOOR CABINET SOUTH GEORGIA AND SOUTH SANDWICH ISLANDS



If you're considering exploring South Georgia and the South Sandwich Islands beyond the usual tourist spots, our comprehensive guide on South Georgia and the South Sandwich Islands tourist visa offers deeper insights and broader options for travelers of different nationalities. For those transiting through other countries en route to South



Reliability within the outdoor plant depends upon a cool, dry and secure environment for the electronics such as the DC power, Telecom and Industrial equipment. The Outdoor Type 2 Outdoor power cabinet more than accomplishes this with a variety of Thermal Management solutions that will keep sensitive electronics functioning in the most extreme



Together, South Georgia and the South Sandwich Islands form part of the Scotia Arc, which extends from the tip of South America to Antarctica (and also includes the South Shetland and South Orkney Islands, though these are not part of the British dependency). The island of South Georgia is 105 mi (170 km) long, and about 25 mi (40 km) wide.

IP55 OUTDOOR CABINET SOUTH GEORGIA AND SOUTH SANDWICH ISLANDS



Krill at South Georgia & the South Sandwich Islands are not self-sustaining but dependent on the northerly movement of krill in the currents of the Southern Ocean from their spawning grounds under the ice in the Antarctic Peninsula and Weddell Sea. Krill reproduction is highly dependent on sea ice conditions and hence environmental factors.



Summary. Welcome to our South Georgia & Antarctic Odyssey featuring the South Sandwich Islands expedition.. On this epic voyage, not only will you explore the famed white continent, discover the Falklands~Malvinas, encounter the wildlife haven in South Georgia, you will also sail to the South Sandwich Islands, a chain of seldom-visited volcanic islands located 740 km (460 ???



South Georgia and the South Sandwich Islands, SGSSI) ??? brytyjskie terytorium zamorskie na po??udniowym Oceanie Atlantyckim. Le? 1/4 y niedaleko po??udniowego ko??a podbiegunowego. Terytorium obejmuje wyspy: Georgia Po??udniowa oraz Sandwich Po??udniowy, kt?re poprzednio administracyjnie podlega??y pod Falklandy.

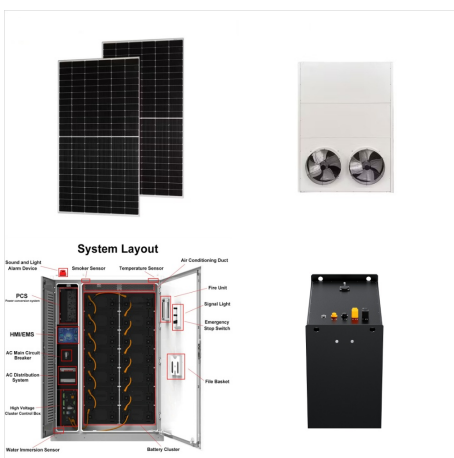
IP55 OUTDOOR CABINET SOUTH GEORGIA AND SOUTH SANDWICH ISLANDS



There are 183 named mountains in South Georgia and the South Sandwich Islands. The highest and the most prominent mountain is Mount Macklin. Be a superhero of outdoor navigation with state-of-the-art 3D maps and mountain identification in the palm of your hand! Scan the QR code to download PeakVisor mobile app. 3D Hiking & Skiing Maps.



Like South Georgia, the South Sandwich Islands also support globally m Height of the territorys highest peak, Mount Paget. ~60% Proportion of the territory under permanent snow/ice cover. 6 1: Natural and cultural heritage significant proportions of certain species, for example, Antarctic fulmars (Fulmarus glacialoides: LC)



The Antarctic Treaty of 1962 resulted in a separation of the British Antarctic Territory from the UK Dependencies. South Georgia then received its first stamps. In 1985 the Falkland Islands Dependencies ceased to exist and South Georgia & the South Sandwich Islands came into existence as a UK overseas territory.

IP55 OUTDOOR CABINET SOUTH GEORGIA AND SOUTH SANDWICH ISLANDS



Can't decide which city in South Georgia and the South Sandwich Islands to visit? Book great stays and search deals on the best South Georgia and the South Sandwich Islands hotels . Most stays are fully refundable.



South Georgia and The South Sandwich Islands : Stamps : Years List : Colnect. Buy, sell, trade and exchange collectibles easily with Colnect collectors community. Only Colnect automatically matches collectibles you want with collectables collectors offer for sale or swap. Colnect collectors club revolutionizes your collecting experience!



Media in category "Maps of South Georgia and the South Sandwich Islands" The following 22 files are in this category, out of 22 total. Barff Peninsula - South Georgia.svg 182 x 121; 2.28 MB. Bayly Island - Clerke Rocks.svg 307 x 224; 1.16 MB. Clerke Rocks - South Georgia.svg 299 x 193; 2.2 MB.

IP55 OUTDOOR CABINET SOUTH GEORGIA AND SOUTH SANDWICH ISLANDS



? 1/4 ?? 1/4 ? South Georgia and the South
Sandwich Islands, SGSSI ? 1/4 ????? ,??? „3592
???



A list of 49 approved visitor sites is included as an
annex in the Visiting South Georgia. Some
approved sites are only suitable for Zodiac cruising
and cruise ships carrying in excess of 200
passengers are only permitted to land passengers
at certain sites.



The island of South Georgia is unusual among
oceanic islands for having pre-Cretaceous
sedimentary rocks underlying much of the island
and a significant portion of felsic igneous rocks.
Two-thirds of the island consists of intensely folded
flysch, capped with Aptian age fossils, tuff and
greywacke in the Cumberland Bay Series.

IP55 OUTDOOR CABINET SOUTH GEORGIA AND SOUTH SANDWICH ISLANDS



The South Georgia and South Sandwich Islands Marine Protected Area (SGSSI-MPA) is one of the world's largest MPAs, covering an area of 1.24 million km² (an area 5 x larger than the UK). It was established in 2012 with the aim of conserving the rich marine biodiversity within the Territory's maritime zone and provides a framework for our



14. South Georgia Pipit. South Georgia wildlife includes several species unique to the island. The South Georgia pipit is endemic to the archipelago, and is the southernmost songbird in the world. The small bird is the size of a sparrow, and is one of the region's only non-seabirds.



IP55 rated Integrated Outdoor Telecom Cabinet enclosure with Air Conditioner (with sandwich panel double-wall structure design) is mainly used for wireless communication base station to house a variety of batteries and equipment, including the new generation of 4G system, communication network/network integrated services, access/transmission

IP55 OUTDOOR CABINET SOUTH GEORGIA AND SOUTH SANDWICH ISLANDS



1 South Georgia Island is the only inhabited island, with the summer-only settlement of Grytviken, and the only one regularly visited by cruise ships. Minor islands are ranged along its north coast ??? those visited by cruises are Willis, Bird, Albatross and Prion, and Cooper. The south coast is exposed to raging winds and waves and is seldom visited ??? Annenkov is the only large island ???



South Georgia & the South Sandwich Islands are only accessible by sea. There is no visitor accommodation ashore, therefore most people visit by cruise ship or yacht. All visits require a visit permit. Visit permit applications for both commercial and private vessels are submitted by the vessel owners or operators. Individual passengers don't



Our film "South Georgia ??? A Visitor's Guide" is compulsory viewing for all visitors to South Georgia. Its aim is to inspire visitors to respect and protect the island and its wildlife during their visit. Narrated by Sir David Attenborough, and produced by leading wildlife film-makers Silverback Films, the story showcases the incredible story of South Georgia's ecological recovery

IP55 OUTDOOR CABINET SOUTH GEORGIA AND SOUTH SANDWICH ISLANDS



South Georgia and South Sandwich Islands are to become a Terrestrial Protected Area which would further protect the most diverse populations of seabirds and marine mammals on Earth, including 25% of the world's gentoo penguins. [r/UpliftingNews](#). [r/UpliftingNews](#).



If rabies exposures occur while in South Georgia and the South Sandwich Islands, rabies vaccines may only be available in larger suburban/urban medical facilities. If your travel plans in South Georgia and the South Sandwich Islands include outdoor activities, take these steps to stay safe and healthy during your trip.



Closeup map of the South Sandwich Islands NASA satellite photograph of Montagu Island. The South Sandwich Islands comprise 11 mostly volcanic islands (excluding tiny satellite islands and offshore rocks), with some active volcanoes. They form an island arc running north-south in the region 56°18'S, 26°23'W, between about 350 and 500 mi (300 and 430 nmi; ???

IP55 OUTDOOR CABINET SOUTH GEORGIA AND SOUTH SANDWICH ISLANDS



The future marine protection of South Georgia and the South Sandwich Islands has been a long-standing campaign for the APPG and our associate members, including the Pew Trusts, and featured in our recent "Keeping 1.5 alive" report, which sets out nine priorities for the forthcoming COP28 summit, which begins next week.