



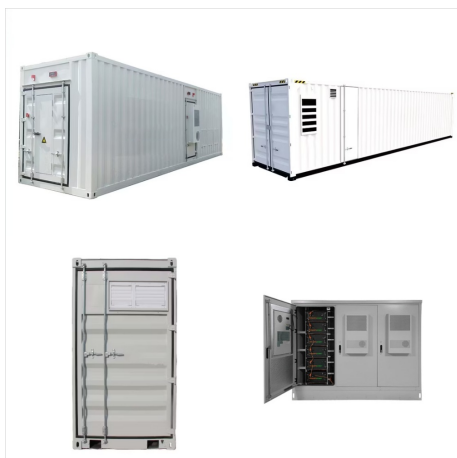
De Enphase IQ Battery 5P is de krachtigste batterij, met een energiecapaciteit van 5,0 kWh en zes geïntegreerde micro-omvormers. Het modulaire ontwerp integreert eenvoudig in het Enphase Energy systeem, waardoor het ideaal is voor nieuwe zonne-energieprojecten of retrofits.



The Enphase IQ 5P battery is designed to deliver a continuous power output of 1.92 kW and a peak power output of 3.84 kW, making it capable of supporting a wide range of household and commercial energy needs. Flexible and Scalable System Design . Modular Scalability for Customised Energy Solutions The Enphase IQ 5P battery's modular design



IQ Battery 5P with FlexPhase is an all-in-one AC-coupled system, that is powerful, reliable, simple, and safe. The battery can be flexibly used in both 1-phase and 3-phase applications. It has a total usable energy capacity of 50 . kWh and includes six embedded



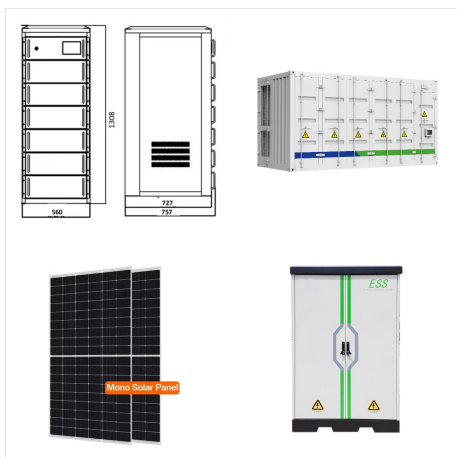
The IQ Battery 5P is designed to be wall-mounted. A wall-mount bracket is included inside the box. It can also be floor-mounted using the IQ Battery 5P Pedestal Mount. One pedestal is needed per battery. System Features: Fully integrated AC battery system; Six embedded IQ8D-BAT Microinverters



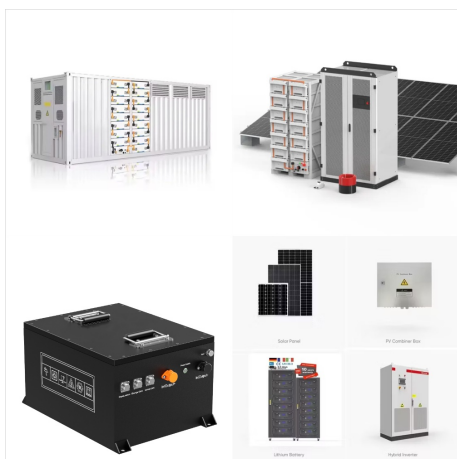
The Enphase IQ Battery 5P all-in-one AC-coupled storage system is the most powerful battery yet from Enphase. It has a total usable energy capacity of 5.0 kWh and includes six embedded grid-forming microinverters with 3.84 kW power rating, including peak output power of 7.68 kVA for 3 seconds and 6.14 kVA for 10 seconds.



IQ Battery 5P IQ Battery 5P all-in-one AC-coupled system is powerful, reliable, simple, and safe. It has a total usable energy capacity of 5.0 kWh and includes six embedded IQ8D-BAT Microinverters with a 3.2 kVA continuous power rating. IQ ???



%PDF-1.4 %???? 1326 0 obj > endobj xref 1326 27  
0000000016 00000 n 0000001856 00000 n  
0000002051 00000 n 0000002088 00000 n  
0000007198 00000 n 0000007851 00000 n  
0000007966 00000 n 0000008079 00000 n  
0000008173 00000 n 0000008753 00000 n  
0000009411 00000 n 0000010039 00000 n  
0000010627 00000 n 0000011129 00000 n ???



The Enphase IQ Battery 5P is making waves in the home energy storage market as a smart, scalable, and efficient solution for those looking to harness solar power. With a capacity of 3.84 kWh, this battery unit offers flexibility through modularity, allowing up to 10 units to be stacked together for a total of 40 kWh.



The company's current offerings include the newly released third-generation IQ 5P battery, alongside its older siblings, the second-generation IQ 3T and IQ 10T. All of these batteries are fine additions to a home solar system, but the new IQ 5P is the star. With double the output of the previous generation, it wins our award as the best solar



The IQ Battery 5P all-in-one AC-coupled system is powerful, reliable, simple, and safe. It has a total usable energy capacity of 5.0 kWh and includes six embedded grid-forming microinverters with a 3.84 kVA continuous power rating. It provides backup capability and



This battery comes with a storage capacity of 5 kilowatt-hours (kWh), and in conjunction with ENPH's new IQ8 microinverters, IQ Battery 5P can provide dependable energy to residential clients



IQ Battery 5P, with each PCU capable of 640 VA of bi-directional continuous power and 1280 VA peak power. These PCUs are connected in parallel and share equal power while charging or discharging the battery module (cell pack). In a rare scenario, if one PCU fails, the remaining PCUs will still operate,





IQ Battery 5P The IQ Battery 5P all-in-one AC-coupled system is powerful, reliable, simple, and safe. It has a total usable energy capacity of 5.0 kWh and includes six embedded IQ8D-BAT Microinverters with a 3.2 kVA continuous power rating. Powerful ??? ???



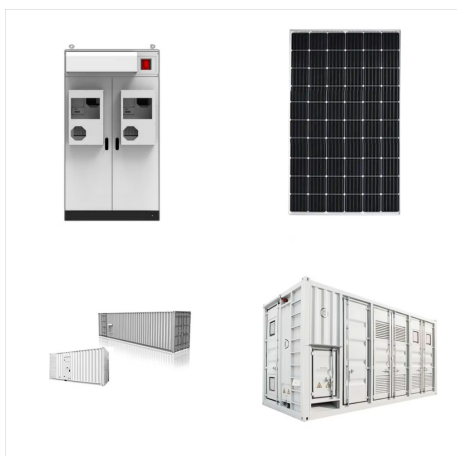
The IQ Battery 5P all-in-one AC-coupled system is powerful, reliable, simple, and safe. It has a total usable energy capacity of 5.0 kWh and includes six embedded grid-forming microinverters with a 3.84 kVA continuous power rating. It provides backup capability, and installers can quickly design the right system size to meet the customer needs.



IQ Battery 5P unit IQ Battery 5P unit (B05-T02-US00-1-3) ID cover and conduit cover IQ Battery 5P cover with two conduit covers for the left and right sides of the unit Bottom mounting bracket and top shield Bottom mounting bracket for mounting the battery on the wall. One top shield is required for UL9540A



The IQ Battery 5P, all-in-one AC-coupled system is powerful, reliable, simple, and safe. It has a total usable energy capacity of 5.0 kWh and includes six embedded grid-forming microinverters with a 3.84 kVA continuous power rating and a peak output power rating of 7.68kW for 3 seconds and 6.14kW for 10 seconds.



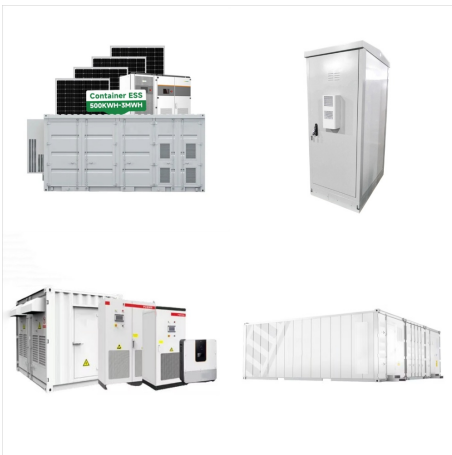
The IQ Battery 5P, the latest addition to Enphase's highly regarded lineup, is a testament to the company's ongoing commitment to excellence and innovation in the realm of renewable energy. This cutting-edge energy storage solution offers homeowners greater control over their energy usage and more freedom to save ??? both economically and



The Enphase IQ 5P Battery is an all-in-one AC-coupled system that pairs solar energy storage with its cutting-edge technology and efficiency. For homeowners who want more sustainable and cost-effective energy solutions, the IQ 5P is a top home battery option.



An all-in-one, AC-coupled storage system, the IQ Battery 5P is the most powerful Enphase battery yet. It has a total usable energy capacity of 5.0 kWh, and features six embedded grid-forming microinverters and a continuous output power rating of 3.2 kVA.



Enphase IQBATTERY-5P-1P-NA 5kWh Battery Powerful. Provides 3.84 kVA continuous and 7.68 kVA peak power; Doubles the available power per kWh of prior generations of IQ Battery 5P; Includes six embedded IQ8D-BAT Microinverters; Reliable. 15-year limited warranty; Cools passively with no moving parts or fans



Each IQ Battery 5P can supply sufficient current to start appliances with a nameplate LRA higher than 32 A per battery for half a second or less. Though the HVAC load takes longer to start than at nominal voltages, the batteries will be able to start the load successfully. The batteries do this by reducing the



Like most questions in the solar industry, the answer is: it depends. Good Fit: If you have an existing Enphase solar system, it's designed to work with the Enphase IQ Battery 5P. If you're interested in Enphase microinverters, it's a good idea to bundle the battery when you install the panels for a better return on investment.



Unidad IQ Battery 5P Unidad IQ Battery 5P (B05-T02-US00-1-3) Cubierta de identificación y cubierta de canalizaciones Cubierta de la IQ Battery 5P con dos tapas de canalizaciones para los lados izquierdo y derecho de la unidad Soporte de montaje inferior y protector superior Soporte de montaje inferior para montar la batería en pared.

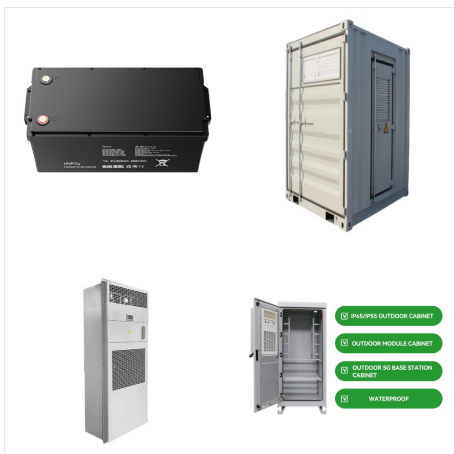


Enphase IQ Battery 5P: The IQ Battery 5P has a much lower capacity when compared to the Powerwall 3 of only 5 kWh. Of course, as mentioned previously, the 5P's modular design allows homeowners to add multiple battery units together. When looked at through that lens, the difference between it and the Powerwall 3 is not as drastic as it seems.





The Enphase IQ Battery 5P is reliable, smart, simple, and safe. Offering homeowners the lowest lifetime energy costs, it comes with backup capability, making it an ideal choice for both new and retrofit solar installations. For installers, designing the right system size to meet customer needs becomes a straightforward task with the IQ Battery



**IQ Battery 5P** The IQ Battery 5P all-in-one AC-coupled system is powerful, reliable, simple, and safe. It has a total usable energy capacity of 5.0 kWh and includes six embedded grid-forming microinverters with a 3.84 kVA continuous power rating. It provides backup capability, and