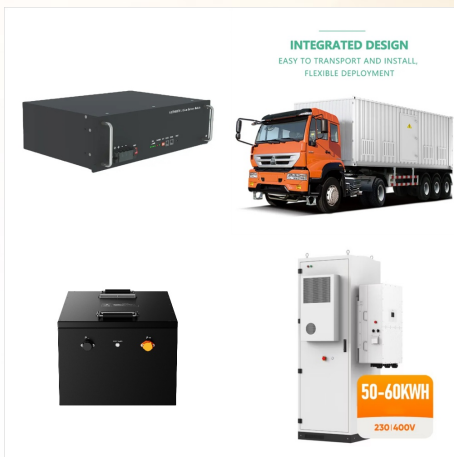




Custom-engineered, walk-in metal enclosure specifically built to protect critical electrical equipment in the power distribution network. Electrical House (eHouse), also called Power House, is a prefabricated walk-in modular outdoor enclosure to house a medium voltage (MV) and low voltage (LV) switchgear as well as auxiliary equipment.



Lightning and Temperature Protection . We have a surge protector device installed in our custom electrical panels to provide lightning protection for your electric distribution equipment, especially if these were used outdoors like in ???



All enclosure panels may be taken directly from the packaging, without dismantling and machining. Interior installation on a 25 mm pitch pattern, no machining required. Wall mounting brackets are easily secured from the outside with a self-tapping screw while retaining the UL Listed A QR code on the enclosure, door and mounting plate allows seamless monitoring, from ???



With System pro E, they will find a first-class quality assortment of enclosures and accessories, from the smallest consumer unit to industrial sized automation and main distribution boards. ABB enclosures are ideal for single family houses, multiple dwellings, commercial buildings, infrastructures and industrial applications in compliance with



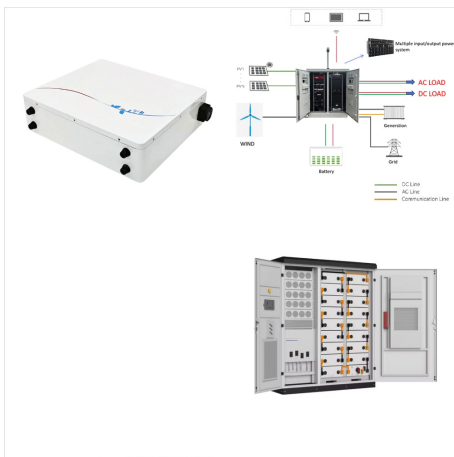
1R5 - Wall mounted, 400x600x210, Compact enclosure, 1-door, with MP, mild steel, IP66. Now ?159.14 inc. Vat ?132.62 ex. Vat See all nVent HOFFMAN . Available In 5 - 10 days. View Product 1 /1. Quick Buy nVent HOFFMAN . MAS0405021R5 - Wall mounted, 400x500x210, Compact enclosure, 1-door, with MP, mild steel, IP66



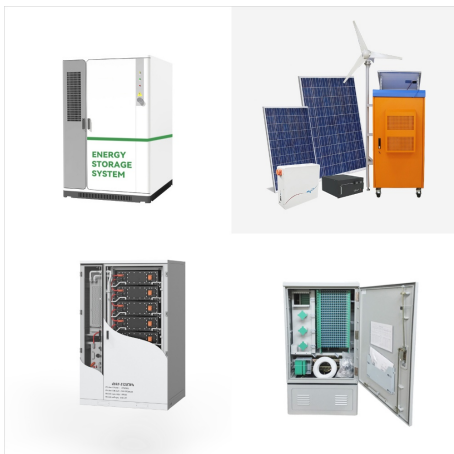
We advise our clients on how to select the right enclosure, as it has a direct impact on how well equipment is protected from environmental risks. Our experts provide the best solution on how to minimize the human impact, as well as how to give protection from powered panel parts.



Design, modify and assemble faster, while improving control panel safety. nVent HOFFMAN offers standard or universally rated Free-Standing enclosures. Solutions that meet and exceed your needs, from local availability to fast assembly and improved safety



Enclosures for DPMs. Mounting for multiple DPMs. The MAXIMA+ is BinMaster's state-of-the-art microprocessor-based, fail-safe rotary level indicator. BinMaster offers economical plastic NEMA 4X enclosures for the DPM series of digital panel meters to provide a convenient way to mount up to ten DPMs to walls and other vertical surfaces.



Our custom enclosures may be made of heavy, durable steel or lightweight aluminum, and can be finished with durable Powder Coat Finishes or Anodized Aluminum. The Design Team at RCI is prepared to help you create the right enclosure for your need, or we are happy to ???



Today's manufacturing world is a complex, global landscape. Manufacturers are turning to industrial automation solutions to help cut the complexity of global production programs and deliver a wider variety of products to market with increased speed, efficiency, and precision. The backbone of these industrial automation frameworks is the modern industrial enclosure, ???



Form IV enclosures are used for applications relating to power distribution. Enclosures are sturdy, robust and rigid, suited for heavy duty applications. Form IV Extendable Enclosures provide easy access for cabling, installation and maintenance from front or rear of the panel. PRODUCT RANGE Comprehensive Enclosures Range 13



From system integrator, OEM, engineering consultant and distributor to panel builder and industrial end-user, our Pilot Devices A small upgrade that can make a big differenceTrust is everything and in industrial environments, it is ???



Panels swing clear from the front of the enclosure to provide access to mounted internal equipment. For CSPB panels, maximum swing is 94 degrees. For CSP panels, maximum panel swing is 106 degrees. Distance from panel surface to door when in the latched position is 1.71 in. (43 mm) for solid doors and 1.45 in. (37 mm) for window doors. Kits include panel, brackets ???



With a focus on quality and customer satisfaction, the factory has earned recognition as a certified Schneider Electric Panel Builder in the North Region of Iraq. With over 30 years of experience, the factory has built a reputation for delivering high-quality and effective solutions to both residential and industrial sectors



Shop here for panel fabrication and enclosures today. We stock a large variety of terminal strips, dinrail and power supplies, nema type enclosures and control cabinets and accessories. If your in need of a prebuilt UL 508a listed assembly, give us a call. Building Controls Group is a UL listed panel fabricating shop.

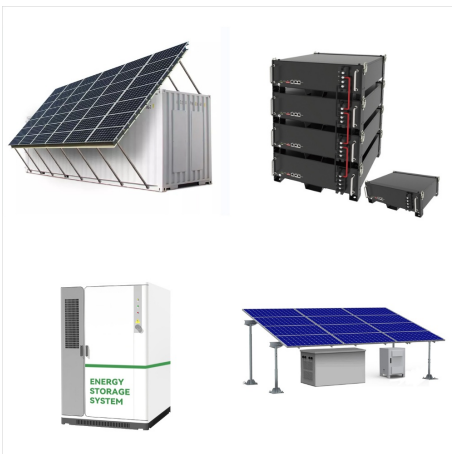




Easy-to-use and Convenient HMI Enclosures for Any Environment. The industry's most comprehensive offering from pushbutton enclosures to consoles and HMI enclosures; Attractive, functional, easy-to-use designs with ergonomic mounting options; Designed to accept most major manufacturers" operator interface devices and critical control components



Powder coating lines for all electrical enclosures, cabinets and DB boxes, substations. KIOSK (electrical substation) of all sizes and dimensions, providing services to government and private sector of Iraq. RS production lines for repairing construction of distribution transformers. Low Voltage feeder pillars.



Protect and Connect Your People, Equipment and Process. You can have confidence in nVent HOFFMAN's 75 years of industry enclosure expertise, along with more than 12,000 standard products and tailored solutions to serve your needs for virtually any application. All our products are manufactured to the highest standards, and backed by service and sales support around ???



Eaton's panel enclosures are manufactured to meet demanding environmental conditions like windblown dust or rain, splashing water, hose directed water, or corrosion. Philippines Select your location. Sign in. We make what matters work\* Products Services Markets Support Company. Search Toggle Mobile Menu.



Manufactured in Iraq under standards: IEC 60439-4;  
The enclosure has IP43 protection and mechanical resistance IK10, GRP body. Dimensions: 517x538x230mm; Our meter boxes can handle humidity up to 95% and temperature from -10 °C to 60 °C