



What is a lightleaf solar panel?

Rigid and lightweight fixed mount solar to power any mobile project. LightLeaf Solar panels are engineered to enhance your outdoor experience. Our leading-edge technology combines rigidity and functionality, with an unbending foundation of carbon fiber strengthening every panel without any sacrifice. "We love this solar panel so much.

Are solar panels a good investment in Ireland?

Solar panels in Ireland are a good investment and a typical solar PV system usually pays for itself in around 5-6 years. After that, it's free electricity all the way. The initial outlay for a solar PV system is roughly EUR7,000 to EUR10,000. Most of our customers generate more solar electricity than the average Irish household consumes each year.

How much do solar panels cost in Ireland?

The cost of a solar PV system varies depending on the size of your roof, whether you want to add a battery etc. But as a ballpark guide, most PV systems cost roughly EUR7,000 to EUR10,000. This takes into account the government grant of up to EUR2,100. For more information, check out our full guide to solar panels Ireland cost and savings.

Why should you choose lightleaf solar panels?

LightLeaf Solar panels are engineered to enhance your outdoor experience. Our leading-edge technology combines rigidity and functionality, with an unbending foundation of carbon fiber strengthening every panel without any sacrifice. "We love this solar panel so much. It's incredible to be able to maintain a full battery.

Do solar panels work in Ireland?

Short answer: yes, solar panels in Ireland work very well. Most of the solar PV systems that we install generate more electricity than the average Irish home consumes. Here's what that looks like in practice. What is the forecast annual power output for our past customers?

Where are lightleaf solar panels made?

LightLeaf Solar panels are built to withstand anything from harsh winters to rough seas. Our solar panels are designed and manufactured in Canada, using quality materials sourced from throughout North America. This

is our general (g=general) panel. These panels are manufactured without any clamps, hardware, or kickstands.



The gift card was the first step towards creating a set of flexible solar panels for his 16" micro-cruising boat. However, the makeshift panels proved inefficient, leading Retzlaff, a mechanical engineer, to realize the market lacked suitable solar solutions for sailboats. LightLeaf Solar produces carbon fiber rigid panels designed for



The gLeaf GL140 is a 140 watt curved rigid solar panel measuring 52.0" x 22.5".. LightLeaf panels are manufactured using industry-leading SunPower Maxeon cells, offering the highest power density on the market. LightLeaf panels are uniquely manufactured as an ultra-lightweight thin rigid structure with a gentle permanent curve. They require no metal frame and are simply ???



A rigid and lightweight fixed mount solar to power any mobile project. gLeaf is the perfect addition to any project ??? use it as the roof of a micro-camper, the lid of a storage box, anything you can imagine. Because the gLeaf is so customizable, you can build it in rather than paste it on. gLeafs have a strong and rigid mounting flange around the entire perimeter to make mounting a ???

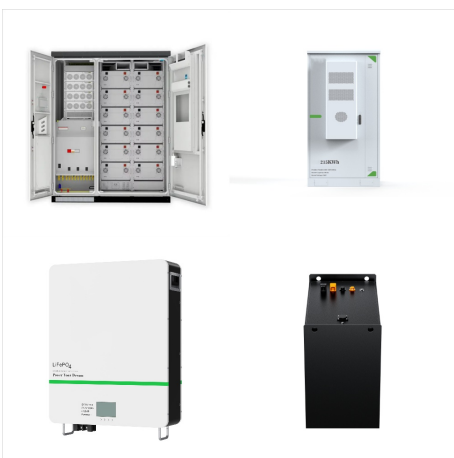
IRELAND LIGHTLEAF SOLAR PANEL



Solar panels return on investment . Solar panels in Ireland are a good investment and a typical solar PV system usually pays for itself in around 5-6 years . After that, it's free electricity all the way. The initial outlay for a solar PV system is ???



But lucky for us, June brings 14 hours of "sunlight" in a day. Not to mention, our SeaLeaf panel's strong clamps allow us to change the angle of the panel on the railing, offering us the ability to find the best angle. If you"d ???



Solar energy has long been used in various applications due to its superior advantages in reusing power. However, solar panels could've been much more popular if they were more user-friendly and versatile for casual and everyday use. Understanding that most solar panels remain too bulky to carry around, Lightleaf Solar - a Canadian manufacturer specializing in innovative solar ???

IRELAND LIGHTLEAF SOLAR PANEL



Solar energy has long been used in various applications due to its superior advantages in reusing power. However, solar panels could've been much more popular if they were more user-friendly and versatile for casual and everyday ???

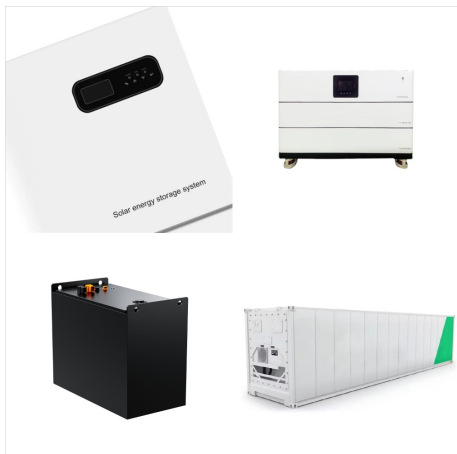


Then the two sets of solar panels via the MPPT controller can be linked using the Bluetooth App. A 200 watt set of panels would need a MPPT15, 100-140 watts would work with the MPPT10 that comes with the TaB320. cheers . 2018 TaB400 Custom Boondock, Jeep Gladiator truck



The Leaf is not just another solar panel - it s a statement of elegance and innovation.Powered by the sunDuring the day the sun???????s rays are absorbed by the Leaf???????s solar panel. These photons of energy are meticulously ???

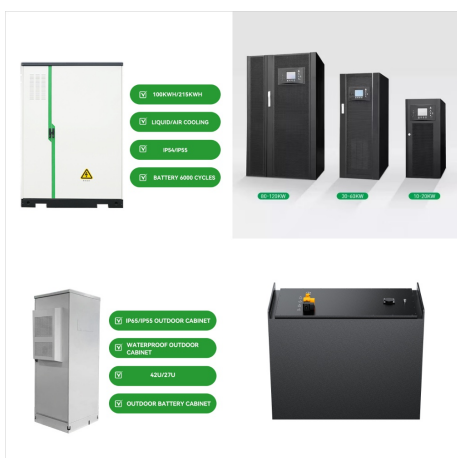
IRELAND LIGHTLEAF SOLAR PANEL



At LightLeaf solar, we use some cool materials and innovative techniques to make our solar panels rigid and light. You can buy light, flexible solar panels. You can buy heavy rigid glass panels. We are the only company in the world that can give you both rigid and light.



Company profile for solar panel manufacturer LightLeaf Solar - showing the company's contact details and products manufactured. ENF Solar. Language: English; Solar Panel Omnis Power Europe - NORDIKA NT5 OP465-485M60-NT5-BF From ???0.115 / Wp Solar Panel Gamko New Energy - GKA210N132 700-720W



This solar panel spoiler will charge the 12-volt battery used to power several of the vehicle's accessories. Both the SL and SV models have a 6.6kw on-board charger that can be fully charged in less than five hours at 240 volts. You can also get this as an option with the Leaf S, and the latter utilizes a 3.6kw onboard charger.

IRELAND LIGHTLEAF SOLAR PANEL



We are partnered with dozens of Marine and Overland companies who carry our rigid, carbon fiber solar panels. They can arrange installation directly onto your RV or boat. LIGHTLEAF SOLAR. 2225 1st Ave N Saskatoon, Saskatchewan S7K 2A5, Canada +1 306-



uLeaf by LightLeaf Solar Light, rigid, rail-mounted solar for boats. seaLeaf is a lightweight, rigid solar panel that clamps to railings, biminis and arches without struts or strings. The quick-release cam-lock hardware is simple to install yet provides instant adjustability to maximize solar intake. Follow our news on Instagram and Facebook!



Rick quit his job teaching engineering at the University of Saskatchewan and spent the next winter developing prototype solar panels. He launched LightLeaf Solar in 2018, partnering with Katrina German, an award-winning social impact entrepreneur. Fast forward three years: Lightleaf is attracting customers and expanding the product line

IRELAND LIGHTLEAF SOLAR PANEL



But lucky for us, June brings 14 hours of "sunlight" in a day. Not to mention, our SeaLeaf panel's strong clamps allow us to change the angle of the panel on the railing, offering us the ability to find the best angle. If you'd like to learn more about the SeaLeaf panel or any of Lightleaf's panels you can find them [here](#).



The gLeaf GL160 is a 160 watt curved rigid solar panel measuring 42.2" x 32.5".. LightLeaf panels are manufactured using industry-leading SunPower Maxeon cells, offering the highest power density on the market. LightLeaf panels are uniquely manufactured as an ultra-lightweight thin rigid structure with a gentle permanent curve. They require no metal frame and are simply ???

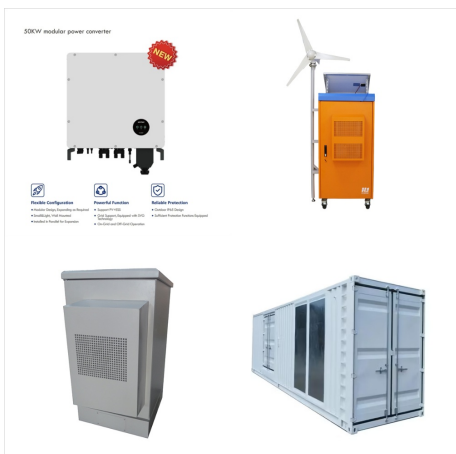


The Leaf is not just another solar panel - it s a statement of elegance and innovation.Powered by the sunDuring the day the sun???????s rays are absorbed by the Leaf???????s solar panel. These photons of energy are meticulously converted into power, charging the 18650 lithium-ion battery. After dark, this stored energy is used to power your

IRELAND LIGHTLEAF SOLAR PANEL



From pv magazine global. Lightleaf has developed a new carbon fiber 110 W PV module for boat applications. "Our latest product is aimed at the marine market, targeting sail and power boats with limited space where weight, functionality, and looks are important," a company spokesperson told pv magazine.. "We've designed a panel, the seaLeaf, with integrated ???



Rigid Overlay Composite (ROC???) technology brings you the world's first solar panels that are lightweight, rigid, and tough. We design each panel to meet every user's needs and provide functionality far beyond raw power. From custom ???