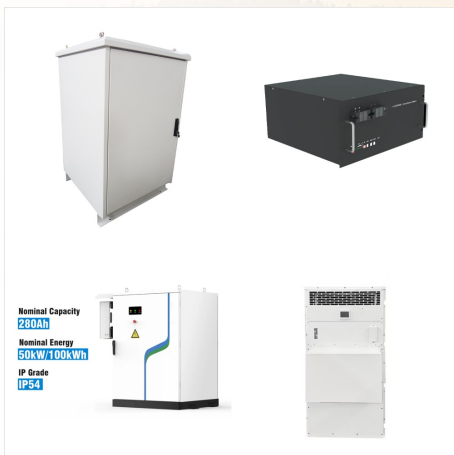


This platform is designed to provide information and updates about S?o Tom? and Pr?ncipe's upcoming solar procurement initiatives. As the country transitions toward renewable energy, we aim to create transparent and competitive processes to attract qualified international investors, ensuring long-term energy sustainability.



S?o Tom? and Pr?ncipe has entered into a new Country Partnership Framework with the World Bank. The framework lays out a selective programme to support S?o Tom? and Pr?ncipe's transition from a public sector-led growth model to a more sustainable and inclusive growth model.
DRC: Solar energy project to bring electricity to a million



National Energy Efficiency Action Plan (NEEAP) of S?o Tom? and Pr?ncipe Page 7 of 92
INTRODUCTION The sustainable industrial and socio-economic development of S?o Tom? and Pr?ncipe (STP) is heavily dependent on reforming the energy sector and transitioning from an almost complete reliance on fossil

IRIS SOLAR ENERGY SÃO TOMÁ© AND PRÃ-NCIPE



S?o Tom? and Pr?ncipe (STP) is making significant strides in advancing its climate-development agenda. The country has taken an inclusive and whole-of-society approach to its mitigation and adaptation actions and is working to integrate climate change into core planning and budgeting processes at national and subnational levels.

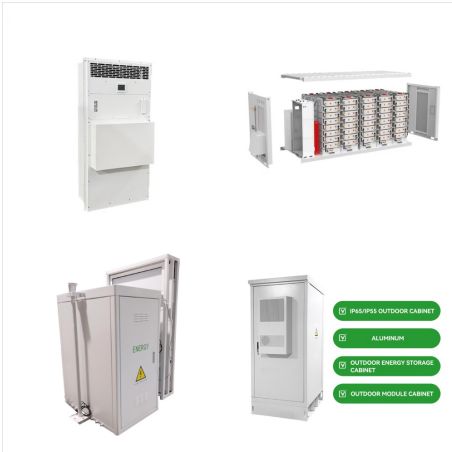


The Critical Materials Monitor aims to improve understanding of supply chains essential for the energy transition, the transition to more sustainable energy. It offers insights into the critical minerals required, outlines the components of key technologies, and provides in-depth reserve, production, and trade analysis.



8 | S?O TOM? AND PR?NCIPE ASSESSMENT OF COST-EFFECTIVE MITIGATION OPTIONS FOR NDC IMPLEMENTATION | 9 EXECUTIVE SUMMARY The Nationally Determined Contribution (NDC) of Sao Tome and Principe, submitted in July 2021, has an economy-wide mitigation target of around 27% reduction of GHG emissions by 2030, compared to the

IRIS SOLAR ENERGY SÃO TOMÁ© AND PRÃ-NCIPE



S?o Tom? and Pr?ncipe (STP) is making significant strides in advancing its climate-development agenda. The country has taken an inclusive and whole-of-society approach to its mitigation and adaptation actions and is working to ???



Harnessing the sun as an unlimited energy source. Solar Component Power is an innovative series of mobile power collection and distribution components that charge batteries, and operate communications and electronic equipment in tactical and remote environments. Iris Technology has delivered over seven thousand remote,



S?o Tom? and Pr?ncipe, as part of its presidency of the CPLP, has been promoting an ambitious agenda for cooperation in the energy sector within the CPLP, following up on the theme of the S?o Tom? Presidency, "Youth and Sustainability in the CPLP", and taking into account the Declaration of the Presidency of the CPLP, which called for the need to encourage deeper ???

IRIS SOLAR ENERGY SÃO TOMÁ© AND PRÁ-NCIPE



energy efficiency investment programme for S?o Tom? and Principe _. It is being executed in close coordination with the ongoing GEF funded UNIDO project ^Strategic program to promote renewable energy and energy efficiency investments in the electricity sector of S?o Tom? and Pr?ncipe. It is also



the two days of the Conference, S?o Tom? and Pr?ncipe received over 150 participants to learn about the status of renewable energies and energy efficiency in the country ??? Sao Tome and Principe joined the NDC Partnership in November 2016. ??? The First Partnership Mission to Sao Tome and Principe was carried out in April 2017 and



This article explores how renewable energy solutions are revolutionizing healthcare in S?o Tom? and Pr?ncipe. It highlights the critical role of electrification in improving healthcare services, the challenges faced, and the strategic initiatives undertaken to integrate renewable energy into the healthcare infrastructure. The article underscores the importance of ???

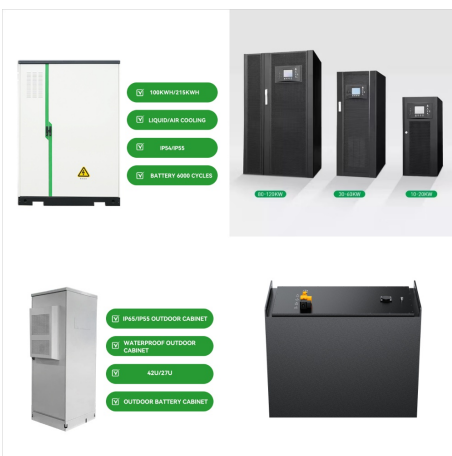
IRIS SOLAR ENERGY SÃO TOMÁ© AND PRÁ-NCIPE



S?o Tom? and Pr?ncipe, an island State off the west coast of Africa, is the continent's second smallest country, with a population of around 225000 (World Bank, 2023) and an area of less than 900 square



Global Sustainable Energy Solutions India Pvt. Ltd.
FIEE Complex, A - 46, Upper Ground Floor Okhla
Industrial Area Phase II New Delhi - 110020, India
Contact: Dwipen Boruah e-mail:
dwipen.boruah@gses Ph: +91-11- 41040534
Mobile: +91 9560550075 Front cover photo: Carport
PV system in a Government Building in S?o Tom?
and Pr?ncipe.

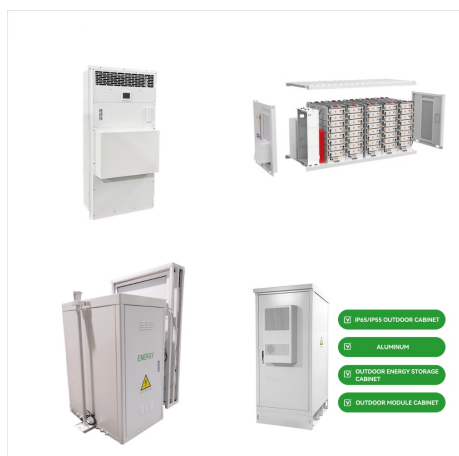


The presidency of S?o Tom? and Pr?ncipe in the CPLP is focused on cooperation in the energy sector, following the theme "Youth and Sustainability in the CPLP". policy guidelines and regulation for solar thermal energy market uptake in S?o Tom? and Pr?ncipe. Energy Oct 20. View more. Projects. Energy Aug 23. The GEF funded strategic

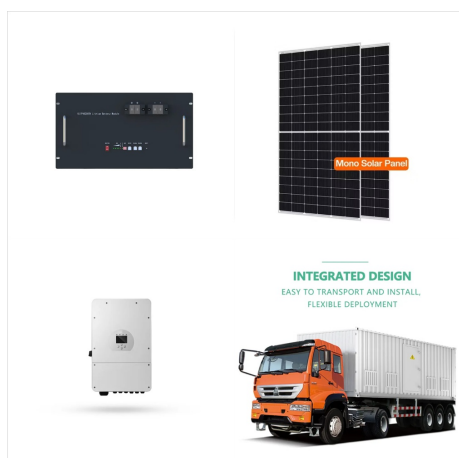
IRIS SOLAR ENERGY SÃO TOMÁ© AND PRÁ-NCIPE



Solar PV plants supplying S?o Tom? International Airport and Pr?ncipe Airport are expected to enter commercial operations later this year, Portuguese project developer Cleanwatts told African Energy Live Data in mid-January.



The presidency of S?o Tom? and Pr?ncipe in the CPLP is focused on cooperation in the energy sector, following the theme "Youth and Sustainability in the CPLP". Sao Tome will produce 540 kwp of solar energy. S?o Tom? vai produzir 540 kwp de energia solar.



S?O TOM? E PR?NCIPE Renewable Energy and Energy Efficiency in S?o Tom? and Pr?ncipe - National Status Report / November 2020
RELAT?RIO NACIONAL DO PONTO DE SITUA??O / Novembro 2020. ENERGIAS RENOV?VEIS E EFICI?NCIA ENERG?TICA EM



S?o Tom? and Pr?ncipe Renewable Energy and Energy Efficiency Status Report Redac??o .
Editorial Team Consultores Redactores: Belizardo Neto, Edchilson Cravid, Gabriel Maquengo
Colaboradores: Flor Clavin & Cl?udia Raimundo (ITPEnergised/UNIDO), Martin Lugmayr (UNIDO), Madival das Neves, 4.1. Solar Energy



The Government of S?o Tom? and Pr?ncipe expects to launch two national action plans in September 2021 with support from the United Nations Industrial Development Organisation (UNIDO). Four projects of 15 to 10 MW are being planned by companies like Solo Solar Energy and CISAN, although the current pandemic situation caused by COVID-19 is

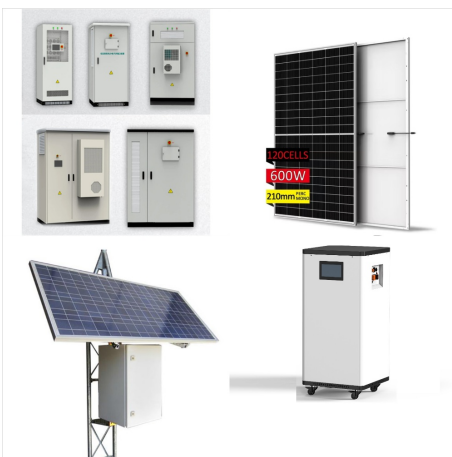


of S?o Tom? and Pr?ncipe Period 2021-2030/2050
In the framework of the vision "S?o Tom? and Pr?ncipe 2030: The country we need to build" The RE sources considered in the NREAP include solar photovoltaic energy (utility-scale and microgeneration), construction and rehabilitation of mini-hydropower plants, and the

IRIS SOLAR ENERGY SÃO TOMÁ© AND PRÃ-NCIPE



S?o Tom? & Pr?ncipe. AFREC's energy balance 2020 show that the total primary energy supply was 170 ktoe. Biomass (firewood and charcoal) is used heavily for cooking purposes. There is no oil refinery. Wind and solar represent 14% in the total energy production in the country. In the total final consumption (TFC), Oil product represent



The presidency of S?o Tom? and Pr?ncipe in the CPLP is focused on cooperation in the energy sector, following the theme "Youth and Sustainability in the CPLP". Sao Tome will produce 540 kwp of solar energy. S?o Tom? vai produzir ???



Chad: Merl Solar to supply 100 MWp from two solar power plants in Gaoui. S?o Tom? and Pr?ncipe (STP) is a small island nation located in the Gulf of Guinea with a population of approximately 220,000 people, according to 2020 UN estimated data. transmission and distribution of electrical energy. Compared to other countries in the

IRIS SOLAR ENERGY SÃO TOMÁ© AND PRÁ-NCIPE



Ideally tilt fixed solar panels 0° in São Tomé, São Tomé and Príncipe. To maximize your solar PV system's energy output in São Tomé, São Tomé and Príncipe (Lat/Long 0.3417, 6.7286) throughout the year, you should tilt your panels at an angle of 0° for fixed panel installations.



November Weather in São Tomé São Tomé & Príncipe. Daily high temperatures are around 80°F, rarely falling below 78°F or exceeding 81°F.. Daily low temperatures are around 79°F, rarely falling below 77°F or exceeding 80°F.. For reference, on March 16, the hottest day of the year, temperatures in São Tomé typically range from 81°F to 82°F, while on July 28, the coldest day ???



"The Energy Transition and Institutional Support Programme (ETISP) is designed to promote green growth, sustainable development of the power system, and strengthening public financial management in Sao Tome and Principe.⁴ "Sao Tome and Principe receive high levels of solar irradiation of 4.9 kWh/m²/day and a specific yield of 3.5 kWh/kWp/day

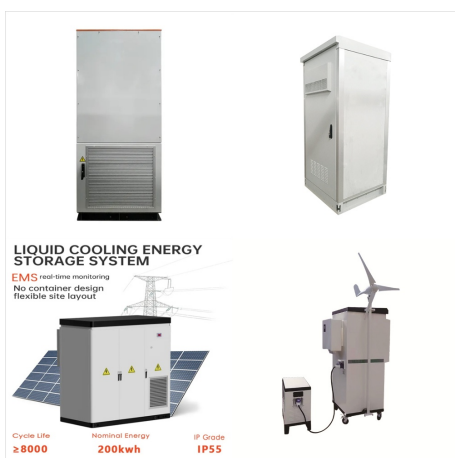
IRIS SOLAR ENERGY SÃO TOMÁ© AND PRÁ-NCIPE



6 | S?O TOM? AND PR?NCIPE ASSESSMENT OF
COST-EFFECTIVE MITIGATION OPTIONS FOR
NDC IMPLEMENTATION | 7 ABBREVIATIONS
AGER Sao Tome and Principe General Authority for
Regulation (Autoridade Geral de Regula??o) BAU
business-as-usual BECCS bioenergy coupled with
carbon capture and storage CAPEX capital
expenditure CCS/U carbon ???



S?O TOM? E PR?NCIPE Renewable Energy and
Energy Efficiency in S?o Tom? and Pr?ncipe -
National Status Report / November 2020
RELAT?RIO NACIONAL DO PONTO DE
SITUA??O / Novembro 2020. ENERGIAS
RENOV?VEIS E EFICI?NCIA ENERG?TICA EM



The first phase of the program will include the
installation of solar PV plants at the S?o Tom?
international airport, as well as on the island of
Pr?ncipe, with capacities of 1.1 kW and 300 kW,
respectively. Currently, nearly 92% of the total
energy produced in S?o Tom? and Pr?ncipe is
generated from diesel generators. The government



Primary energy trade 2015 2020 Imports (TJ) 2 151
2 123 Exports (TJ) 0 0 Net trade (TJ) - 2 151 - 2 123
Imports (% of supply) 79 70 Exports (% of
production) 0 0 Energy self-sufficiency (%) 38 35
Sao Tome and Principe COUNTRY INDICATORS
AND SDGS TOTAL ENERGY SUPPLY (TES) Total
energy supply in 2020 Renewable energy supply in
2020 65% 0% 35% Oil