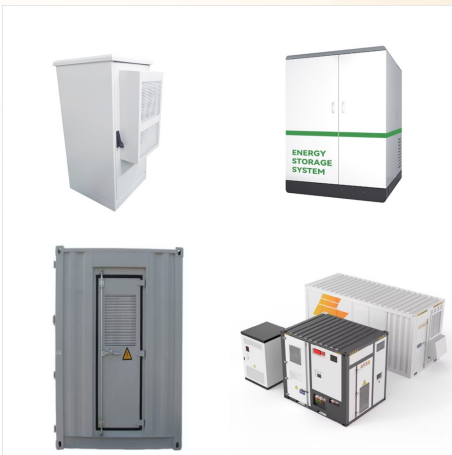




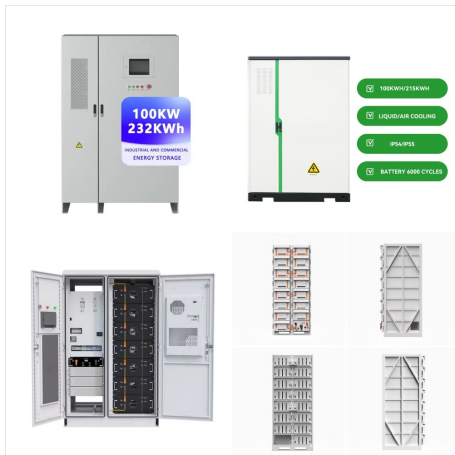
About Iris Power. Iris Power was founded in 1990 and continues to be a globally recognized as a leader in condition based maintenance. Years of scientific research and practical field experience have yielded sensors and instruments that help professionals like you determine the true condition of large electrical machines, prioritize maintenance to prevent failures and extend the life of ???



iris power mcpdtracii qualitol-iris power has been the world leader in motor and generator winding diagnostics since 1990, providing a full line of on-line and off-line tools, as well as commissioning and consulting services.



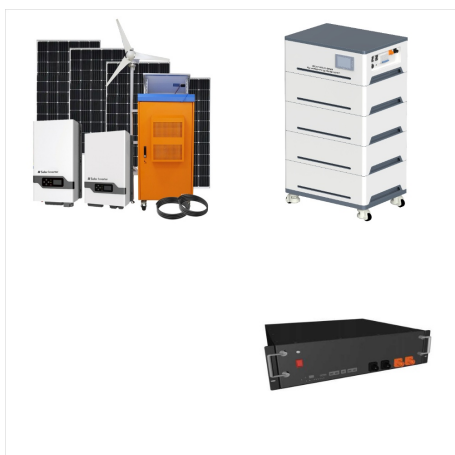
Iris Power Profile and History Iris Power, founded in 1990, offers sensors, monitors and diagnostic solutions for the assessment of the actual state of generators, motors, dry-type transformers and air-insulated switchgear, so that the risk assessed and the necessary maintenance can be planned.



. IRIS Power PDTracII 4208 System The Iris Power PDTracII 4208 system is an economical means of providing automated, continuous partial discharge (PD) measurement for motors, generators, switchgear, and dry type transformers rated up to 35 kV.



About Iris Power. Iris Power, founded in 1990, offers sensors, monitors and diagnostic solutions for the assessment of the actual state of generators, motors, dry-type transformers and air-insulated switchgear, so that the risk assessed and the necessary maintenance can be planned.



Product Overview. The Iris Power GuardIII+ is one of the most versatile and reliable condition based monitoring instrument available. It is capable of collecting data, analyzing results and ???



IRIS POWER LP - A QUALITROL COMPANY | 2,336 followers on LinkedIn. Iris Power LP was established to provide high-quality products and services to improve maintenance capabilities for large motors and generators used by power utilities and heavy industries throughout the world. Established in 1990, Iris Power offers sensors, monitors and diagnostic solutions to evaluate ???



Product Overview. The Iris Power GuardII+ is one of the most versatile and reliable condition based monitoring instrument available. It is capable of collecting data, analyzing results and communicating with third party networks about the condition of generators and motors, including continuous online monitoring of Partial Discharges, Rotor Magnetic Flux for Shorted Turn ???