



What is the difference between 12V and 12V AGM batteries?

It's important to keep in mind that both types of batteries have their advantages and disadvantages. While a 12V battery is less expensive, it may not last as long or be as reliable as a 12V AGM battery. On the other hand, a 12V AGM battery is more expensive but offers better performance and durability.

Are lithium batteries better than AGM batteries?

Lithium batteries, particularly the LiFePO4 variant, boast several advantages over AGM batteries, such as higher energy density, longer lifespan and superior performance. These batteries demonstrate improved efficiency, steady discharge voltage and can be completely discharged without causing harm to the battery.

What are AGM batteries?

AGM (Absorbent Glass Mat) batteries like the Renogy Deep Cycle AGM Battery and the 12 Volt AGM Car Battery have unique characteristics that set them apart from traditional lead-acid batteries. In this comprehensive guide, we'll delve into the world of AGM batteries, covering everything from their features to maintenance tips.

Are 12V AGM batteries maintenance-free?

12V AGM batteries are maintenance-free and do not require regular water level checks. This makes them a more convenient option for those who want a battery that requires minimal upkeep. Cost is always a consideration when making any purchase, and batteries are no exception.

What do AGM batteries look like?

Appearance: AGM batteries typically have a distinctive flat top with small vents for gases. Specifications: Check the battery's manual or specifications sheet for confirmation. AGM technology is utilized across various battery types, each tailored for specific applications:

Can AGM batteries be charged?

Yes, AGM batteries can be charged using standard battery chargers, but it's best to use chargers with AGM-specific modes for optimal performance. Q: Are AGM batteries suitable for solar applications? Absolutely! AGM batteries are excellent for solar energy storage due to their deep cycle capabilities and

# IS A CAR BATTERY 12V AGM OR LITHIUM



maintenance-free operation.



Lithium Batteries Image of a 12V/150Ah lithium battery. Image Source: Lithium Car Battery vs. AGM Application of lithium battery for electric vehicle. Image Source: Advisor Well. Electronic features like GPS, audio systems, heated seats, DVD players, etc., all demand battery. AGM batteries are great for high-end and advanced fuel-efficient



A 12V AGM (Absorbent Glass Mat) battery is also a lead-acid battery but has a different construction that allows it to be more durable and have a longer lifespan. A 12V lithium battery, on the other hand, uses lithium-ion ???

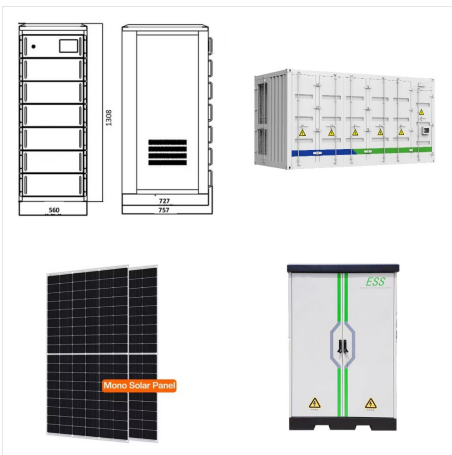


This is offset by the fact that a lithium battery will last much longer than the lead acid one, but you will also need to spend money to replace the car's built in 12V battery charger. Charging a lithium ion requires slightly different methods than charging a lead acid battery, so if you try to charger a 12V lithium ion battery using the car

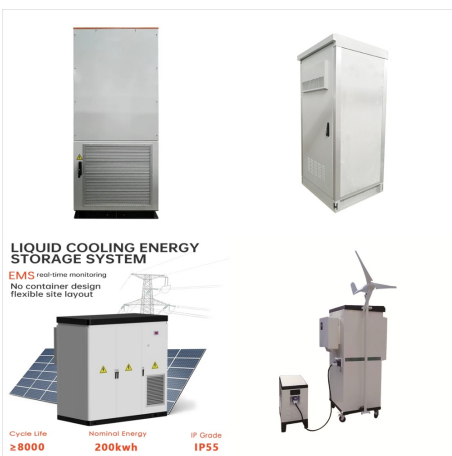
# IS A CAR BATTERY 12V AGM OR LITHIUM



If you swap a 100aH AGM battery with a 100aH lithium, most people suggest you are getting around 50% extra usable capacity, in conjunction with the 50% less weight. Like household solar systems, I can only see the price of 12V lithium batteries continuing to come down, and it won't be long before buying a lead acid battery just doesn't



What are the differences between 12V, 12V AGM, and 12V lithium batteries? A 12V battery is a standard lead-acid battery commonly used in cars, boats, and other vehicles. A 12V AGM (Absorbent Glass Mat) battery is also a ???

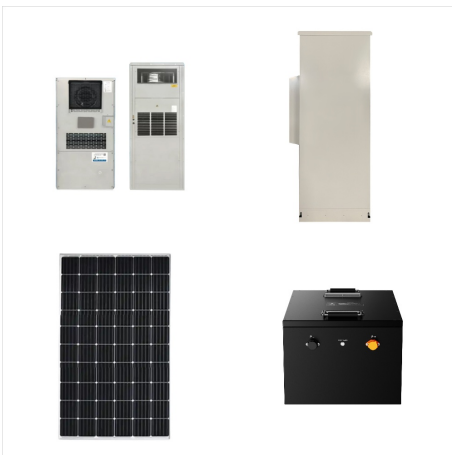


A functional 12 Volt car battery is the lifeline of your car. Without it, crucial components of your car such as the engine, the lights, and the infotainment cannot work. AGM Batteries. Absorbent Glass Mat batteries are comparable to the VRLA. The electrolyte is closely suspended to the active material of the plates. Only compatible

# IS A CAR BATTERY 12V AGM OR LITHIUM



? A car battery usually has a 12v configuration. Common types are AGM (Absorbent Glass Mat) and lithium batteries. AGM batteries, which are a type of lead-acid, offer durability ???



Best AGM Car Battery: Odyssey Extreme ??? Jump to this Car Battery; Best Value AGM: When it comes to finding the best lithium car battery, you shouldn't take a shortcut. CCA measures the number of amps a 12-volt battery can deliver for 30 seconds at 0°F (-17.8°C) without dropping below 7.2 volts.



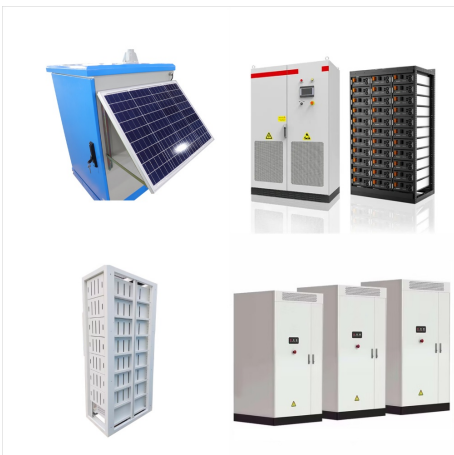
Buy NOCO GENIUSPRO25, 25A Smart Car Battery Charger, 6V, 12V and 24V Portable Automotive Charger, Battery Maintainer, Trickle Charger and Desulfator for AGM, Lithium, Marine, Boat and Deep Cycle Batteries: Battery Chargers - Amazon FREE DELIVERY possible on eligible purchases



# IS A CAR BATTERY 12V AGM OR LITHIUM



AGM battery vs lithium: Discover which power source is best for your needs. Starting Battery Truck Battery Car start Batteries Motorcycle Starter Battery. Energy Storage System C&I ESS 12v Lithium Battery; 24V Lithium Battery; 48V Lithium Battery; 60V Lithium Battery; High Voltage Lithium Battery; About Menu Toggle. Exhibition Schedule;



An ultralight all-purpose battery for both starting engines & deep cycle applications. With both 1,000 cold cranking amps (CCA) and exceptional deep cycle performance, the DL+ 60Ah is a great choice for most applications. 2X the power and 8X the lifespan of a traditional starter or deep cycle battery.



Understanding the differences between AGM and lithium batteries is essential for selecting the best option for specific applications. Lithium batteries offer superior energy density, extended lifespan, and increased efficiency ???

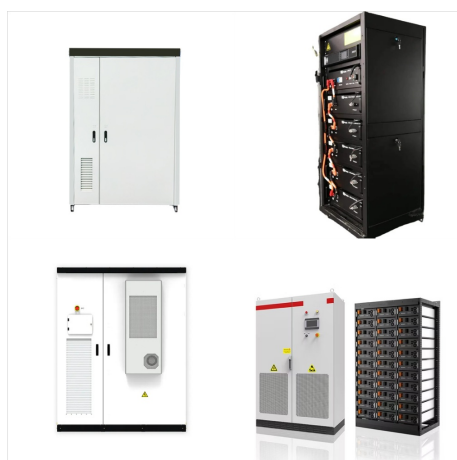
# IS A CAR BATTERY 12V AGM OR LITHIUM



3.7 V Lithium-ion Battery 18650 Battery 2000mAh  
3.2 V LifePO4 Battery 3.8 V Lithium-ion Battery Low  
Temperature Battery High Temperature Lithium  
Battery Ultra Thin Battery Resources Ufine Blog  
News & Events Case Studies FAQs



The battery must be able to maintain at least 10.5 volts for a 12-volt battery, which is the minimum amount needed to power the car. The average car battery life is around 5-7 years, but this can be reduced by certain factors. An AGM battery is a type of battery technology that uses an absorbent glass mat to hold the battery acid. These



Super Start Platinum AGM Top Post Battery Group  
Size 140R - 140RPLT. Part #: 140RPLT Line: SSB.  
3 Year Limited Warranty. Battery Type: Voltage (V):  
12 Volt. Cold Cranking Amps (CCA): 710 CCA.  
Cranking Amps (CA): 825 CA. Group Size (BCI):  
24F, 24R. Reserve

# IS A CAR BATTERY 12V AGM OR LITHIUM



Best AGM Car Battery: Odyssey Extreme ??? Jump to this Car Battery; Best Value AGM: When it comes to finding the best lithium car battery, you shouldn't take a shortcut. CCA measures the number of amps a 12-volt ???



Even though inside all AGM, GEL and flooded batteries contain lead acid, the internal construction of the battery divides them into their respective categories. Absorbed Glass Matte or "AGM" batteries are the latest and greatest in lead-acid batteries. An AGM battery uses a separator consisting of fiberglass between the

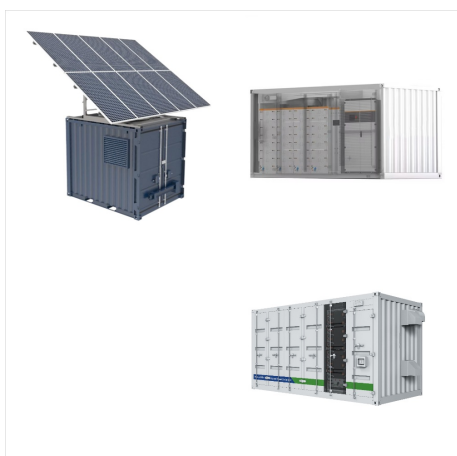


The first step in upgrading a 12-volt lead acid battery to lithium is to choose the cell chemistry and configuration. This is a necessary step because regardless of the chemistry you use, lithium-ion batteries have a voltage that is ???

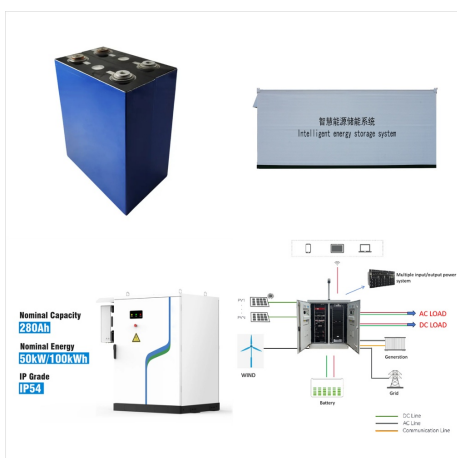
# IS A CAR BATTERY 12V AGM OR LITHIUM



Cold suppresses a car battery's performance, forcing a car battery to work twice as hard to generate cranking amps. Because the fiberglass mats are tightly packed on the lead plates, an AGM battery can generate a lot of amps without facing a lot of resistance. Even if the cold slows down chemical reactions, an AGM has amps to spare.



Here are the answers to some commonly asked questions regarding AGM flooded lead acid batteries and lithium-ion battery banks. 1. Is AGM better than a lithium battery? No, lithium batteries offer a far superior performance than an AGM battery. You would need an AGM battery bank to achieve the same amount of performance as a single lithium



AGM Batteries: AGM batteries utilize glass mats to absorb the electrolyte, making them spill-proof and more efficient in certain applications.; What is a Standard Battery? The Standard Flooded Lead-Acid Battery (SLA) is the most commonly used car battery worldwide. It has been around for more than a century and is the traditional design for automotive use.



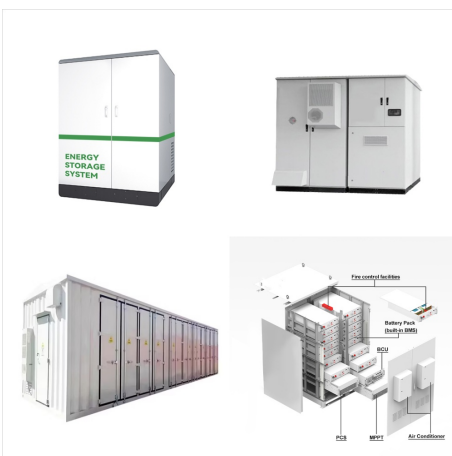
# IS A CAR BATTERY 12V AGM OR LITHIUM



If your car came with an AGM, or you find yourself regularly replacing your battery due to accessory power drain, look into an AGM today. a 12-volt battery with a 650 CCA rating means the battery will provide 650 amps for 30 seconds at 0 °F before the voltage falls to 7.20 volts for a 12v battery. So in freezing temperatures, a higher CCA



AGM battery charging typically involves several stages to ensure complete and effective charging. Here are the common charging stages: Bulk Charge: During the bulk charging stage, the charging voltage is set to its maximum value, usually around 14.4V to 14.8V. This stage helps replenish the majority of the battery's charge quickly.



The first step in upgrading a 12-volt lead acid battery to lithium is to choose the cell chemistry and configuration. This is a necessary step because regardless of the chemistry you use, lithium-ion batteries have a voltage that is much lower than 12. When replacing a golf car lead acid or AGM battery with a lithium-ion battery, there are

# IS A CAR BATTERY 12V AGM OR LITHIUM



What Is Better, Lithium or AGM Battery? AGM battery vs. lithium battery is a common debate that looks at the best option. Both are very resilient and long-lasting though it appears the lithium type outlasts the AGM battery. The lithium battery is ideal for electric cars, while the AGM is fit for off-roading and high-power-need vehicles.



An ultralight all-purpose battery for both starting engines & deep cycle applications. With both 1,000 cold cranking amps (CCA) and exceptional deep cycle performance, the DL+ 60Ah is a great choice for most applications. 2X ???



Car Bike Racks; Wheel Hubs & Covers; 4WD & Car Fridges. Read On For Our AGM VS Lithium Review: Battery Capacities. In the battle of AGM vs lithium, the first factor to consider is battery capacity. The huge 7-year warranty ??? never before seen in the market until now. Invicta offers a range of lithium batteries in 12V, 24V & 36V and

# IS A CAR BATTERY 12V AGM OR LITHIUM



AGM (Absorbent Glass Mat) batteries like the Renogy Deep Cycle AGM Battery and the 12 Volt AGM Car Battery have unique characteristics that set them apart from traditional lead-acid batteries. In this comprehensive guide, we'll delve into the world of AGM batteries, covering everything from their features to maintenance tips.