

What is a solar cell?

Individual solar cell devices are often the electrical building blocks of photovoltaic modules, known colloquially as "solar panels". Almost all commercial PV cells consist of crystalline silicon, with a market share of 95%. Cadmium telluride thin-film solar cells account for the remainder. [2]

Can Super Perfect Cell wipe out the Solar System?

During the final Kamehameha clash, Super Perfect Cell was able to consistently pressure the injured Super Saiyan 2 Gohan (despite interference from the Dragon Team), and claimed his Kamehameha could wipe out the entire solar system with its power.

How many volts can a solar cell produce?

The common single-junction silicon solar cell can produce a maximum open-circuit voltage of approximately 0.5 to 0.6 volts. [3] Photovoltaic cells may operate under sunlight or artificial light.

What are solar cells used for?

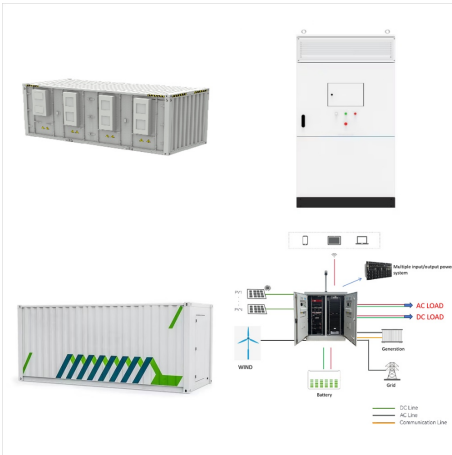
Assemblies of solar cells are used to make solar modules that generate electrical power from sunlight, as distinguished from a "solar thermal module" or "solar hot water panel". A solar array generates solar power using solar energy. Application of solar cells as an alternative energy source for vehicular applications is a growing industry.

What is a solar cell & a photovoltaic cell?

A solar cell or photovoltaic cell (PV cell) is an electronic device that converts the energy of light directly into electricity by means of the photovoltaic effect. [1] It is a form of photoelectric cell, a device whose electrical characteristics (such as current, voltage, or resistance) vary when it is exposed to light.

What are the different types of solar cells?

Other possible solar cell types are organic solar cells, dye sensitized solar cells, perovskite solar cells, quantum dot solar cells etc. The illuminated side of a solar cell generally has a transparent conducting film for allowing light to enter into the active material and to collect the generated charge carriers.



Nebula just by name looks like its much larger than baseline multi solar system level so by name it would appear as Nebula is a baseline of if and not the current baseline which might lead to confusion similar to street level tier which I always thought meant destroying street and I was wondering why its below wall level until new tiering



Reported timeline of research solar cell energy conversion efficiencies since 1976 (National Renewable Energy Laboratory). Solar-cell efficiency is the portion of energy in the form of sunlight that can be converted via photovoltaics into electricity by the solar cell.. The efficiency of the solar cells used in a photovoltaic system, in combination with latitude and climate, determines the



There has been argument and controversy over this quote, but here I will prove Cell is in fact, Solar System level. Furthermore, this will be a reflection on how and why Dragon Ball should be debated. Contents. 1 Part #1: All sources ???



Both are solar system!!! Cell High Diff!! Everyone is saying cell is solar system level but he's DRAGON BALL solar system level which is a massive difference. The mortal realm in DB is stated to contain nebulae. Nebulae are stated to innumerable stars. You still following me? Galaxies are then stated to contain innumerable nebulae.



Shading of a Cell in a Module. An individual solar cell has an output of 0.5 V. Cells are connected in series in a module to increase the voltage. Since the cells are in series, the current has to be the same in each cell and shading one cell causes the current in the string of cells to fall to the level of the shaded cell.



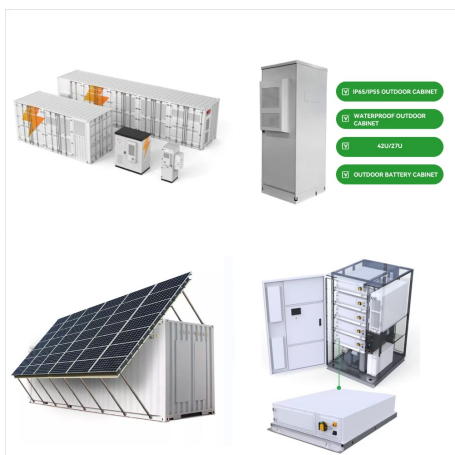
It's weird, "cause a Kamehameha doesn't typically explode when fired off into space. It just sorta fizzles out. I think the most likely thing is if it were to detonate, the explosion wpuld either wipe out the sun causing the death of the Solar System, or the explosion would literally be so large that the entire Solar System would get caught in it.



a Solar System should be no big deal. From the Sun to Pluto is 3.67 billion miles. Since the planets can never be trusted to all line up together, cell has to create an explosion that is planet-busting levels and spans 7.34 billion miles.



An anime guide calls SSJ2 Gohan solar system level.. An aura with sparks like flashes of lightning and an upright, combative hairstyle are the distinguishing features of this, the strongest Saiyan warrior!



The solar panels that you see on power stations and satellites are also called photovoltaic (PV) panels, or photovoltaic cells, which as the name implies (photo meaning "light" and voltaic meaning "electricity"), convert ???



Photovoltaic Cell is an electronic device that captures solar energy and transforms it into electrical energy. It is made up of a semiconductor layer that has been carefully processed to transform sun energy into electrical energy. The term "photovoltaic" originates from the combination of two words: "photo," which comes from the Greek word "phos," meaning light, ???



A photovoltaic system, also called a PV system or solar power system, is an electric power system designed to supply usable solar power by means of photovoltaics consists of an arrangement of several components, including solar panels to absorb and convert sunlight into electricity, a solar inverter to convert the output from direct to alternating current, as well as ???



Solar cells are the basic building blocks of photovoltaic systems, which can range from powering small electronic devices to large-scale utility-grade power plants. Solar energy is an increasingly popular and sustainable source of renewable energy, offering environmental benefits, cost savings, and energy independence.



? Solar cell, any device that directly converts the energy of light into electrical energy through the photovoltaic effect. The majority of solar cells are fabricated from silicon???with increasing efficiency and lowering cost as the materials range from amorphous to polycrystalline to crystalline silicon forms.



Casualy stomped Android 16), far higher with Self-Destruction (His Self-Destruction killed SSJ Goku) | Solar System level (At full power, Cell is far stronger than any of the Z-Fighters, including SSJ Goku and SSJ Gohan, and ???



Cell in the Cell Saga was scaled to solar system level due to him saying he could destroy the solar system. But in Dragon Ball Canon, the solar system is actually multi-solar system level to galaxy level in scale. SSJ2 Teen Gohan, Super Perfect Cell Other Pages that should be revised: edit: Goku (buu saga), Vegeta (buu saga), Gohan (buu saga



Photovoltaic cells convert sunlight into electricity. A photovoltaic (PV) cell, commonly called a solar cell, is a nonmechanical device that converts sunlight directly into electricity. Some PV cells can convert artificial light into electricity. Sunlight is composed of photons, or particles of solar energy. These photons contain varying amounts of energy that correspond to the different



Uncover the solar cell principle behind solar panels???transforming sunlight into energy through semiconductor tech and the photovoltaic effect. They create solar systems that capture sunlight efficiently. Their technology ensures solar panels generate more power. The photovoltaic effect turns light into electricity on an atomic level



A conventional crystalline silicon solar cell (as of 2005). Electrical contacts made from busbars (the larger silver-colored strips) and fingers (the smaller ones) are printed on the silicon wafer. Symbol of a Photovoltaic cell. A solar cell or photovoltaic cell (PV cell) is an electronic device that converts the energy of light directly into electricity by means of the photovoltaic effect. [1]



Now that the required energy output has been established, let us disprove exactly why Cell isn't a solar system buster. The answer to that is very simple: even SSJ3 Goku in BoG cannot ???



Lets use Super Perfect Cell from DBZ. His maximum output is capable of destroying the solar system. That makes him solar system level. Saitama destroyed many stars (I doubt millions) when he was clashing with Garou. That would put him at ???



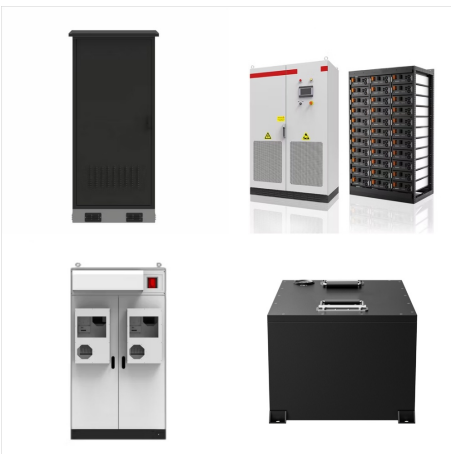
Some dragon ball fans believe that frieza and cell in dragon ball z are universal level beings when that's not the case.im referring to when the narrator stated that frieza when he transformed into his second form had frightening power that could destroy the universe and elder murry stated that cell could end the universe.There's no way you can tell me that frieza in general is anywhere



UPDATE: This is an older calc, which I recently updated here. Intro []. Cell stated that he was powerful enough to destroy the solar system from Earth, a statement that has been confirmed by many guidebooks. However, it turns out that in Dragon Ball, Solar Systems consist of nebulae with innumerable stars.. Going by the largest nebula in the Milky Way, it is relatively safe to ???



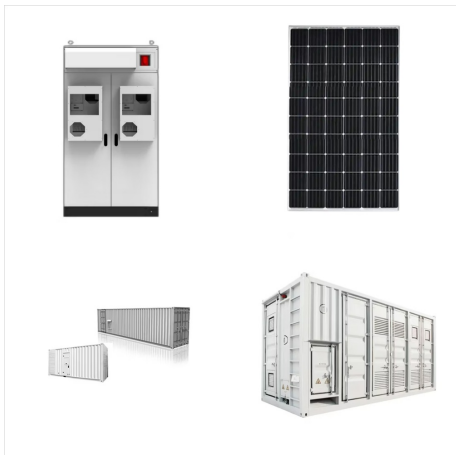
Silicon . Silicon is, by far, the most common semiconductor material used in solar cells, representing approximately 95% of the modules sold today. It is also the second most abundant material on Earth (after oxygen) and the most common semiconductor used in computer chips. Crystalline silicon cells are made of silicon atoms connected to one another to form a crystal ???



Cell's arguments for being solar system level while they have their own merit, are thousands of times less explicit and more vague than the ones for Saitama. But the big discussion in this thread over who of the two actually is solar system level or not is about Saitama.



Solar System-level is thousands of times above planet-level so we can't just assume that someone above planet is already star system-level. With that said, I do believe Cell's Kamehamehq could have destroyed every planet in the system and left a few dents on the Sun.



Directory: Techniques ??? Offensive Techniques
??? Energy Wave Solar Kamehameha
(???????????????, Taiy??kei Hakai Kamehameha, lit. "Solar System-Destroying Kamehame Wave") is a variation of the Super Kamehameha used by Cell in his Super Perfect Form. It is his final and most powerful attack. First, Cell stores up an immense amount of energy as he prepares a ???