

How big is Mars compared to Earth?

Mars is about half the width of Earth, and has an equatorial diameter of about 4,221 miles (6,792 kilometers). Mars is the fourth planet from the Sun, orbiting at an average distance of 141.6 million miles (227.9 million kilometers). Mars is about 49 million miles (79 million kilometers) farther from the Sun than Earth.

What is the largest planet in the Solar System?

Jupiter is the largest planet in our solar system by size, mass, and volume. By size, Jupiter is gigantic, having a diameter of 142,800 kilometers or about 11 Earths across. In terms of volume, you could fit every other planet inside Jupiter, and there would still be space left over. Jupiter is more than 300 times the mass of the Earth.

How big is Mars?

With a radius of 2,106 miles (3,390 kilometers), Mars is about half the size of Earth. If Earth were the size of a nickel, Mars would be about as big as a raspberry. From an average distance of 142 million miles (228 million kilometers), Mars is 1.5 astronomical units away from the Sun.

Which planet has the biggest volcano?

Like Earth and Venus, Mars has mountains, valleys, and volcanoes, but the red planet's are by far the biggest and most dramatic. Olympus Mons, the solar system's largest volcano, towers some 16 miles above the Martian surface, making it three times taller than Everest.

How close is Mars to Earth?

Mars Nearing Earth In 2003, the Hubble Space Telescope snapped this photo of the red planet 11 hours before its closest approach to Earth in 60,000 years. How close? It was a mere 34,648,840 miles (55,760,220 kilometers) away. The n...Read More --- The rusty world is full of mysteries--and some of the solar system's most extreme geology.

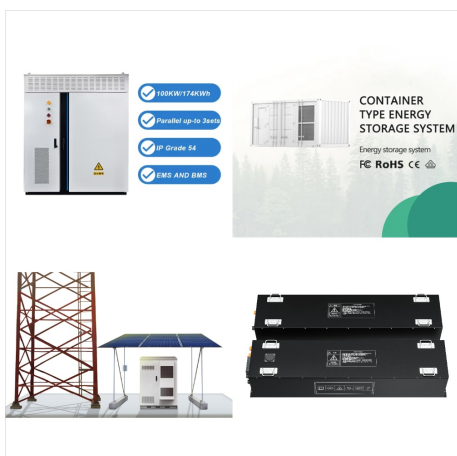
Is Mars a desert planet?

Mars is less dense than Earth, having about 15% of Earth's volume and 11% of Earth's mass, resulting in about 38% of Earth's surface gravity. Mars is the only presently known example of a desert planet, a rocky planet with a surface akin to that of Earth's hot deserts.

IS MARS THE LARGEST PLANET IN THE SOLAR SYSTEM



Our solar system has eight planets, and five dwarf planets - all located in an outer spiral arm of the Milky Way galaxy called the Orion Arm. Venus, Earth, and Mars. These inner planets also are known as terrestrial planets because they have solid surfaces. Mercury Facts. Mercury is the smallest planet in our solar system, and the nearest



Mars is on the three-yard line of our imaginary football field. The red planet is about 142 million miles (228 million kilometers) on average from the Sun. Our solar system's largest planet is an average distance of 484 million miles (778 million kilometers) from the Sun. That's 5.2 AU. Jupiter is the largest of the planets, spanning nearly



? Mars is the fourth planet in the solar system in order of distance from the Sun and the seventh in size and mass. It is a periodically conspicuous reddish object in the night sky. There are intriguing clues that billions of years ago Mars was even more Earth-like than today. Mars is the fourth planet in the solar system in order of distance

IS MARS THE LARGEST PLANET IN THE SOLAR SYSTEM



Parts-per-million chart of the relative mass distribution of the Solar System, each cubelet denoting 2×10^{24} kg. This article includes a list of the most massive known objects of the Solar System and partial lists of smaller objects by observed mean radius. These lists can be sorted according to an object's radius and mass and, for the most massive objects, volume, density, and surface



Jupiter is the largest planet in the solar system at 139,822 km in diameter. This means that Jupiter is actually more than 28.5 times larger in diameter than the smallest planet, Mercury. Mars is 53% of the diameter of planet Earth, but only has approximately 38% of the surface area of our planet. 8. Mercury, the smallest planet, has a



Mars. The red planet is dusty, cold world with a thin atmosphere and is home to four NASA robots. Ceres is the largest object in the asteroid belt but was reclassified a dwarf planet in 2006 - even though it's 14 times smaller than Pluto. The Sun is the heart of our solar system and its gravity is what keeps every planet and particle in

IS MARS THE LARGEST PLANET IN THE SOLAR SYSTEM



Olympus Mons (/ ʔʔ ʔʔ l ʔʔ m p ʔʔ s ʔʔ m ʔʔ n z, oʔʔ-; [4] Latin for "Mount Olympus") is a large shield volcano on Mars is over 21.9 km (13.6 mi; 72,000 ft) high as measured by the Mars Orbiter Laser Altimeter (MOLA), [5] about 2.5 times the elevation of Mount Everest above sea level is Mars's tallest volcano, its tallest planetary mountain, and is approximately tied with Rheasilvia ʔʔʔ



Image Credit: ESA, DLR, FU Berlin, Mars Express; Processing & CC BY 2.0 License: Andrea Luck. Explanation: The largest volcano in our Solar System is on Mars. Although three times higher than Earth's Mount Everest, Olympus Mons will not be difficult for humans to climb because of the



Our solar system has eight planets, and five dwarf planets - all located in an outer spiral arm of the Milky Way galaxy called the Orion Arm. Venus, Earth, and Mars. These inner planets also are known as terrestrial planets because they ʔʔʔ

IS MARS THE LARGEST PLANET IN THE SOLAR SYSTEM



There are lots of tricks for remembering the order of the planets. This illustration shows them in order from the sun. WP/CC BY-SA 3.0/Wikipedia. Over the past 60 years, humans have begun to explore our solar system in earnest. From the first launches in the late 1950s until today, we've sent probes, orbiters, landers, and even rovers (like NASA's Perseverance Rover ???



Here is the list of the known planetary moons in the solar system. Planets Mercury and Venus have no moons. Other planets in the solar system have one or more moons orbiting them. As of June 2023, with 146 confirmed moons, Saturn is the planet that has the most moons in Solar System. Moons come in many shapes, sizes, and types.



The largest planet in our solar system by far is Jupiter, which beats out all the other planets in both mass and volume. Jupiter's mass is more than 300 times that of Earth, and its diameter, at 140,000 km, is about 11 times Earth's diameter.

IS MARS THE LARGEST PLANET IN THE SOLAR SYSTEM



The fourth planet from the Sun, Mars is one of Earth's two closest planetary neighbors (Venus is the other). Mars is one of the easiest planets to spot in the night sky ??? it looks like a bright red point of light. Mars is home to the largest volcano in the solar system, Olympus Mons. It's three times taller than Earth's Mt. Everest with a



It's the largest planet in our solar system ??? if it were a hollow shell, 1,000 Earths could fit inside. It's also the oldest planet, forming from the dust and gases left over from the Sun's formation 4.6 billion years ago. But it has the shortest day in the solar system, taking only 10.5 hours to spin around once on its axis.



Olympus Mons, volcano on the planet Mars, the highest point on the planet and the largest known volcano in the solar system. It consists of a central edifice 22 km (14 miles) high and 700 km (435 miles) across. Learn more about Olympus Mons in this article.

IS MARS THE LARGEST PLANET IN THE SOLAR SYSTEM



Our solar system includes the Sun, eight planets, five dwarf planets, and hundreds of moons, asteroids, and comets. The largest planet is Jupiter. If Jupiter was a hollow shell, 1,000 Earths could fit inside. For this reason, the first four planets ??? Mercury, Venus, Earth, and Mars ??? are terrestrial planets. They are all small with



This illustration shows the approximate sizes of the planets relative to each other. Outward from the Sun, the planets are Mercury, Venus, Earth, Mars, Jupiter, Saturn, Uranus, and Neptune, followed by the dwarf planet Pluto. Jupiter's diameter is about 11 times that of the Earth's and the Sun's diameter is about 10 times Jupiter's.



? Mars is the fourth planet in the solar system in order of distance from the Sun and the seventh in size and mass. It is a periodically conspicuous reddish object in the night sky. There are intriguing clues that billions of years ago ???

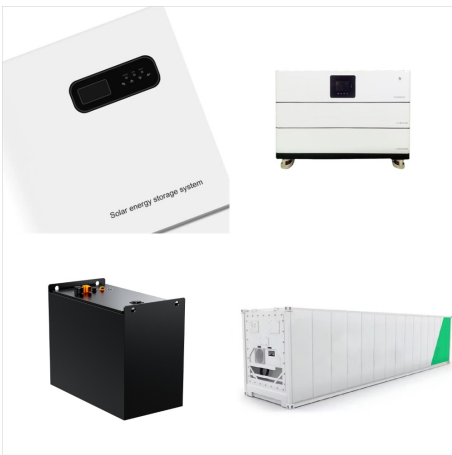
IS MARS THE LARGEST PLANET IN THE SOLAR SYSTEM



Scientific evidence also suggests Mars was once a much warmer planet. Mars is one of the most explored planets in the solar system including missions to assess the habitability and possibility of life on Mars. The first spacecraft to visit Mars (Mariner 4), captured the first images of another planet from space. Jupiter is the largest



? Mars is the second smallest planet in the solar system, only larger than Mercury and slightly more than half the size of Earth. It has an equatorial radius of 3,396 km (2,110 miles) and a mean polar radius of 3,379 km (2,100 ???)



When the solar system settled into its current layout about 4.5 billion years ago, Mars formed when gravity pulled swirling gas and dust in to become the fourth planet from the Sun. Mars is about half the size of Earth, and like its fellow terrestrial planets, it has a central core, a rocky mantle, and a solid crust.

IS MARS THE LARGEST PLANET IN THE SOLAR SYSTEM



Jupiter is one of the five visible planets (Mercury, Venus, Mars, Saturn), being the fifth most distant from the Sun at an average distance of 5.2 AU, its closest approach is at 4.9 AU and at its farthest 5.4 AU. Its exact position can be checked online since the planet is constantly tracked. It is the biggest planet of the Solar System



Olympus Mons on Mars is the largest known volcano in the solar system. NASA. The largest known volcano in the solar system is actually on the planet Mars. Its name is "Olympus Mons" and it towers some 27 kilometers above the planet's surface. This giant mountain is a shield volcano.



Mars is the fourth planet from the Sun, and the seventh largest. It's the only planet we know of inhabited entirely by robots. NASA. Solar System Exploration Our Galactic Neighborhood. Skip Navigation. menu close modal Mars By the Numbers More Destinations Click for more Jupiter