



Where is Pluto located?

It is located in the distant Kuiper Belt. Discovered in 1930, Pluto was long considered our solar system's ninth planet. But after the discovery of similar worlds deeper in the Kuiper Belt, Pluto was reclassified as a dwarf planet in 2006 by the International Astronomical Union.

When did Pluto become a planet?

Since the beginning of the 1990s, its status as a planet was questioned following the discovery of other objects of similar size. After the discovery of Eris in 2005, Pluto was demoted in 2006 from a planet to a dwarf planet after the IAU defined the term "planet".

Is Pluto a planet?

Alison Klesman, senior editor, *Astronomy*: To me, Pluto is not a planet-- and that's a sign of progress. Classification and nomenclature in science is admittedly often arbitrary, but the idea is to at least group like with like so we can better understand how the universe works.

Is Pluto a dwarf planet?

Dwarf planet Pluto is a member of a group of objects that orbit in a disc-like zone beyond the orbit of Neptune called the Kuiper Belt. This distant realm is populated with thousands of miniature icy worlds, which formed early in the history of our solar system about 4.5 billion years ago.

Would Pluto be a planet again?

By this geophysical definition, Pluto would be a planet again. Planet or not, Pluto is useful for understanding how planets form. "As a scientist who studies how planets form, Pluto is a brick that helps me understand the building," says Lyra. For Pluto and the 8 planets, this process begins with clouds of gas and dust in space.

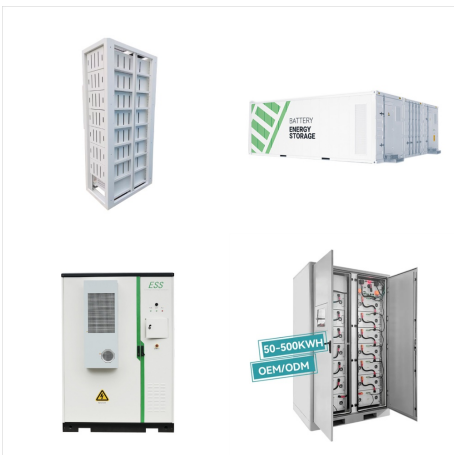
Is Pluto a double planet?

Pluto is orbited by five known moons, the largest of which is Charon. Charon is about half the size of Pluto itself, making it the largest satellite relative to the planet it orbits in our solar system. Pluto and Charon are often referred to as a "double planet." The only spacecraft to explore Pluto up close was NASA's New Horizons.

IS PLUTO APART OF THE SOLAR SYSTEM



If you were born in the last century you might have memorized that there were nine planets in our solar system, as heard in the famous Schoolhouse Rock! song, Interplanet Janet. Upon the discovery of its existence in 1930, Pluto enjoyed decades of special status as one of the solar system's planets. Then, in the summer of 2006, Pluto was demoted.



Pluto is a dwarf planet that lies in the Kuiper [KI-per] Belt. It's an area full of icy bodies and other dwarf planets at the edge of our solar system. Pluto is known as the "King of the Kuiper Belt" ??? and it's the largest object in ???

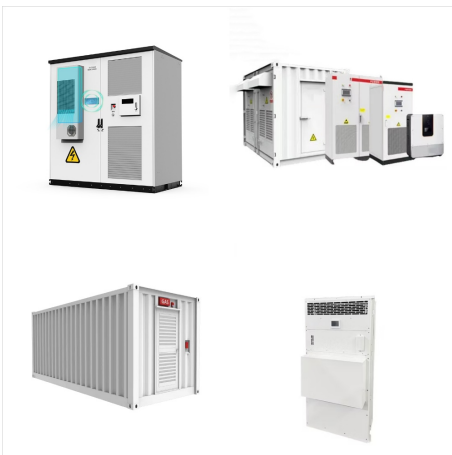


Pluto's orbit is erratic. The planets in our solar system all orbit the sun in a relatively flat plane. Pluto, however, orbits the sun at a 17-degree angle to this plane. In addition, its orbit is exceptionally elliptical and crosses Neptune's orbit. One of its moons, Charon, is about half Pluto's size. Some astronomers have recommended that

IS PLUTO APART OF THE SOLAR SYSTEM



Pluto is actually closer to the Sun than Neptune for about 8% of its orbit. Pluto is just one of many icy objects in a distant area of our solar system. Pluto and its large, orbiting moon Charon, are tipped on their sides. Pluto is almost 40 times farther from the Sun than Earth is. All of the above.



Pluto and Charon are just 12,200 miles (19,640 km) apart, less than the distance by flight between London and Sydney. Compared with most of the solar system's planets and moons, the Pluto

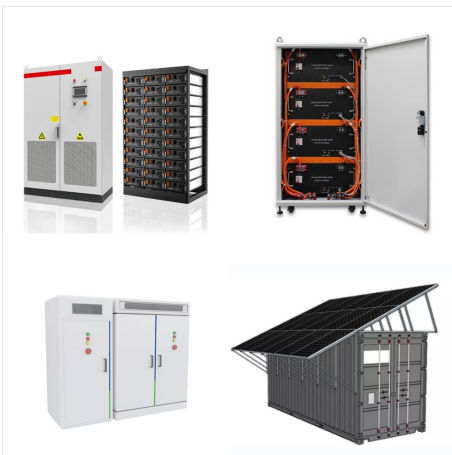


The Solar System [d] is the gravitationally bound system of the Sun and the objects that orbit it. [11] It formed about 4.6 billion years ago when a dense region of a molecular cloud collapsed, forming the Sun and a protoplanetary disc. The Sun is a typical star that maintains a balanced equilibrium by the fusion of hydrogen into helium at its core, releasing this energy from its ???

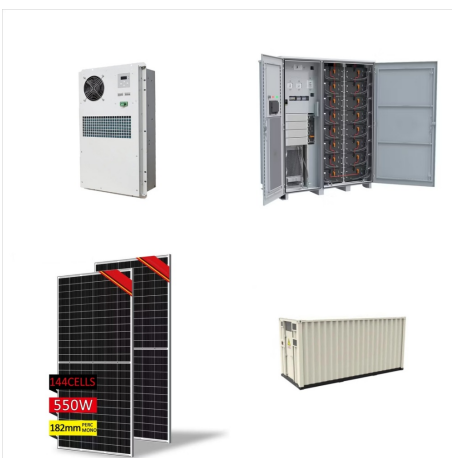
IS PLUTO APART OF THE SOLAR SYSTEM



(We still love you, Pluto!) An overview of the history, mythology and current scientific knowledge of the planets, moons and other objects in our solar system. Menu. The Sun is the heart of our solar system and its gravity is what keeps every planet and particle in orbit. This yellow dwarf star is just one of billions like it across the



The solar system consists of the Sun; the eight official planets, at least three "dwarf planets", more than 130 satellites of the planets, a large number of small bodies (the comets and asteroids), and the interplanetary medium. (Pluto is now classified as a dwarf planet): The first thing to notice is that the solar system is mostly



There are five officially recognized dwarf planets in our solar system: Ceres, Pluto, Haumea, Makemake, and Eris. What is a Planet? Inner Planets. The first four planets from the Sun are Mercury, Venus, Earth, and Mars. These inner planets also are known as terrestrial planets because they have solid surfaces.

IS PLUTO APART OF THE SOLAR SYSTEM



Tombaugh's task was to systematically image the night sky in pairs of photographs taken two weeks apart, then examine each pair and determine whether any objects had shifted position. Solar System Exploration: Pluto - NASA provides an abundance of information about Pluto such as facts, images, headline news, and a video. Further Reading



Pluto nearly fills the frame in this image from NASA's New Horizons spacecraft taken on July 13, 2015, when the spacecraft was 476,000 miles (768,000 kilometers) from the surface. The closest dwarf planet to the ???



Pluto is the largest known dwarf planet in the Solar System, discovered in 1930. It was thought to be the 9th planet of our system for 75 years until the discovery of Eris and other similar objects that led to its demotion ???

IS PLUTO APART OF THE SOLAR SYSTEM



The Astronomical units (AU) column is the average distance between Earth and the Sun and is the most common way for scientists to measure distance in our Solar System. Below is a table of the distances between each of the planets in our solar system.



We mean waaaaay out there in our solar system ??? where the forecast might not be quite what you think. Let's look at the mean temperature of the Sun, and the planets in our solar system. The mean temperature is the average temperature over the surface of the rocky planets: Mercury, Venus, Earth, and Mars. Dwarf planet Pluto also has a solid



Though Pluto has formally been considered a dwarf planet for almost two decades, it still has many lessons left for planetary scientists ??? including hints about how the solar system formed.

IS PLUTO APART OF THE SOLAR SYSTEM



In 2006, the world lost a lot of stars???actress Shelley Winters, soul icon James Brown, naturalist Steve Irwin???but only one planet: Pluto. Declared the ninth planet in our solar system after



Introduction. The planetary system we call home is located in an outer spiral arm of the Milky Way galaxy. Our solar system consists of our star, the Sun, and everything bound to it by gravity ??? the planets Mercury, Venus, Earth, Mars, Jupiter, Saturn, Uranus, and Neptune; dwarf planets such as Pluto; dozens of moons; and millions of asteroids, comets, and meteoroids.

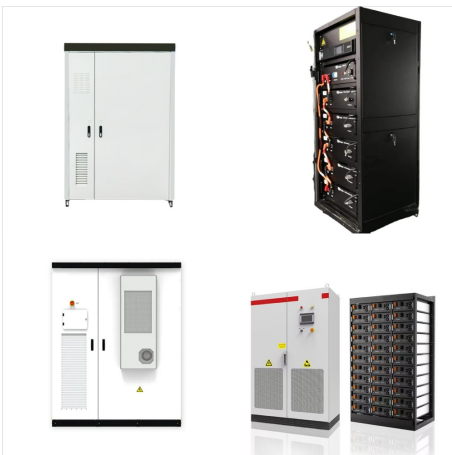


Pluto nearly fills the frame in this image from NASA's New Horizons spacecraft taken on July 13, 2015, when the spacecraft was 476,000 miles (768,000 kilometers) from the surface. The closest dwarf planet to the Sun, and the only dwarf planet in the inner solar system, Ceres orbits the Sun from an average distance of 257 million miles

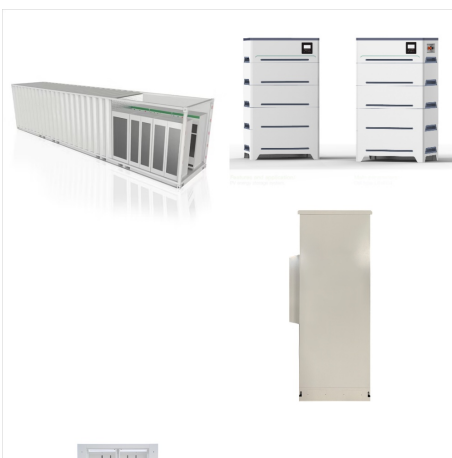
IS PLUTO APART OF THE SOLAR SYSTEM



This episode, he also lays out his case for Pluto ??? and many other objects in the solar system ??? to be considered a planet. This episode is part of Short Wave's space camp series about all the



Though Pluto has formally been considered a dwarf planet for almost two decades, it still has many lessons left for planetary scientists ??? including hints about how the solar system formed.



Hydra spins fastest at 89 times for every orbit around Pluto! The smaller moons of Pluto also wobble much more than other moons. These moons wobble like spinning tops. Another difference between Pluto's moons and other moons in the solar system is that it seems that at least two of Pluto's moons were formed when two smaller, rocky bodies

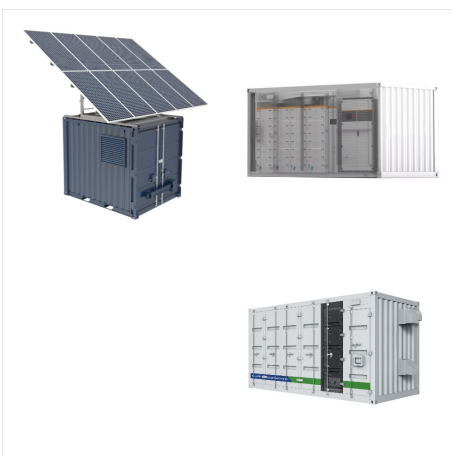
IS PLUTO APART OF THE SOLAR SYSTEM



? The solar system's several billion comets are found mainly in two distinct reservoirs. The more-distant one, called the Oort cloud, is a spherical shell surrounding the solar system at a distance of approximately 50,000 astronomical units (AU)???more than 1,000 times the distance of Pluto's orbit. The other reservoir, the Kuiper belt, is a thick disk-shaped zone whose main ???



Pluto, large, distant member of the solar system that formerly was regarded as the outermost and smallest planet also was considered the most recently discovered planet, having been found in 1930. In August 2006 the ???



Though we must sadly disconsider Pluto, here are some quick facts about each planet of the Solar System. Mercury. Mercury is the closest planet to the Sun. It is only 58 million km / 36 million mi or 0.39 AU away. Though it is the closest, it isn't the hottest planet in the Solar System; Venus holds that titled.

IS PLUTO APART OF THE SOLAR SYSTEM



Pluto, large, distant member of the solar system that formerly was regarded as the outermost and smallest planet. In 2006 a group of experts in the scientific community voted to give Pluto the new classification of dwarf planet. ???