

Why is Pluto no longer a planet?

Why Pluto is no longer a planet (or is it?) Link Copied! Pluto was long considered our solar system's ninth planet. Although small, it orbits the sun and has the spherical shape required to be considered a planet.

Would Pluto be a planet again?

By this geophysical definition, Pluto would be a planet again. Planet or not, Pluto is useful for understanding how planets form. "As a scientist who studies how planets form, Pluto is a brick that helps me understand the building," says Lyra. For Pluto and the 8 planets, this process begins with clouds of gas and dust in space.

Is Pluto a spherical planet?

Link Copied! Pluto was long considered our solar system's ninth planet. Although small, it orbits the sun and has the spherical shape required to be considered a planet. Pluto was relegated in 2006 when the International Astronomical Union (IAU) created a new definition for planets and decided Pluto did not fit the bill.

Where is Pluto located?

It is located in the distant Kuiper Belt. Discovered in 1930, Pluto was long considered our solar system's ninth planet. But after the discovery of similar worlds deeper in the Kuiper Belt, Pluto was reclassified as a dwarf planet in 2006 by the International Astronomical Union.

Why was Pluto reclassified as a dwarf planet?

Pluto was reclassified as a dwarf planet in 2006 by the International Astronomical Union because other objects might cross its orbit. Pluto is a complex and mysterious world with mountains, valleys, plains, craters, and glaciers. It is located in the distant Kuiper Belt. Discovered in 1930, Pluto was long considered our solar system's ninth planet.

Is Pluto a Living Planet?

The flyby of NASA's New Horizons mission in 2015 showed us that Pluto has an atmosphere and is geologically active, with mountains, volcanoes, and glaciers. If you're trying to group like with like, from a geophysical standpoint, Pluto is very much like the other planets, and is an active, living world unto itself.

IS PLUTO STILL IN THE SOLAR SYSTEM



Pluto is the largest known dwarf planet in the Solar System, discovered in 1930. Click for even more interesting facts and information on Pluto. Pluto's demotion as a planet to a dwarf planet is still highly controversial to this day. Even now there are people in high positions at NASA who vehemently opt for Pluto's reclassification as

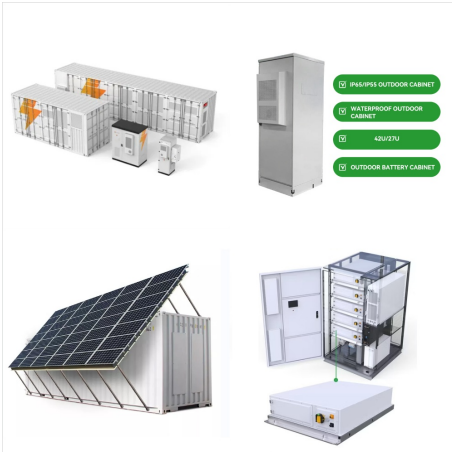


NASA's New Horizons spacecraft is at Pluto. After a decade-long journey through our solar system, New Horizons made its closest approach to Pluto Tuesday, about 7,750 miles above the surface ??? roughly the same distance from New York to Mumbai, India ??? making it the first-ever space mission to explore a world so far from Earth.



This means that from now on only the rocky worlds of the inner Solar System and the giant planets of the outer system will be designated as planets. The "inner Solar System" is the region of space that is smaller than the radius of Jupiter's orbit around the sun. Solar System Exploration: Pluto - NASA provides an abundance of

IS PLUTO STILL IN THE SOLAR SYSTEM



Thus, Pluto is further away from us than any planet in the Solar System. How far is Pluto from the Sun? On average, Pluto is located 39.5 AU from the Sun, which equals 5.9 billion kilometers (3.7 billion miles). it would still be exceptionally bright ??? 150 to 450 times the light of the Full Moon on the Earth! Can you see Pluto from the



We mean waaaaay out there in our solar system ??? where the forecast might not be quite what you think. Let's look at the mean temperature of the Sun, and the planets in our solar system. The mean temperature is the average temperature over the surface of the rocky planets: Mercury, Venus, Earth, and Mars. Dwarf planet Pluto also has a solid



Though Pluto has formally been considered a dwarf planet for almost two decades, it still has many lessons left for planetary scientists ??? including hints about how the solar system formed. Pluto isn't a planet ??? but it gives us clues for how the solar system formed | VPM

IS PLUTO STILL IN THE SOLAR SYSTEM



Overview Origin History Orbit Rotation Geology Mass and size Atmosphere



And don't forget the plutoids, ??? dwarf planets beyond the orbit of Pluto ??? and the trans-Neptunian objects, which include the plutoids and other small solar system bodies that orbit beyond



Pluto, large, distant member of the solar system that formerly was regarded as the outermost and smallest planet also was considered the most recently discovered planet, having been found in 1930. In August 2006 the International Astronomical Union (IAU), the organization charged by the scientific community with classifying astronomical objects, voted to remove ???

IS PLUTO STILL IN THE SOLAR SYSTEM



The encounter???which also included a detailed look at the largest of Pluto's five moons, Charon???capped the initial reconnaissance of the planets started by NASA's Mariner 2 more than 50 years before, and revealed an icy world replete in magnificent landscapes and geology???towering mountains, giant ice sheets, pits, scarps, valleys and terrains seen ???



Though Pluto has formally been considered a dwarf planet for almost two decades, it still has many lessons left for planetary scientists ??? including hints about how the solar system formed.



Pluto is by far the most famous dwarf planet. Discovered by Clyde Tombaugh in 1930, Pluto was long considered our solar system's ninth planet. But after other astronomers found similar intriguing worlds deeper in the distant Kuiper Belt ??? the IAU reclassified Pluto as a ???

IS PLUTO STILL IN THE SOLAR SYSTEM



This episode, he also lays out his case for Pluto ??? and many other objects in the solar system ??? to be considered a planet. This episode is part of Short Wave's space camp series about all the



Although there is some debate within the science community as to whether Pluto should be classified as a Planet or a dwarf planet, the International Astronomical Union has decided on the term plutoid as a name for dwarf planets like Pluto. This is done for the purpose of being able to depict the solar system and still represent the bodies



Pluto was once our solar system's ninth planet, but has been reclassified as a dwarf planet. It's located in the Kuiper Belt. NASA. Solar System Exploration Our Galactic Neighborhood. Skip Navigation. menu close modal Pluto By the Numbers More Destinations Click for more Jupiter Click for more Earth Click for more

IS PLUTO STILL IN THE SOLAR SYSTEM



For 76 years, Pluto was the beloved ninth planet. No one cared that it was the runt of the solar system, with a moon, Charon, half its size. No one minded that it had a tilted, eccentric orbit.



Pluto was considered the ninth planet of our Solar System until 2006, when it was declassified to a dwarf planet. Conclusion For Pluto. This happened after astronomers settled upon what would define a planet, and Pluto seemed to lack criteria. Many, even from high positions at NASA, still consider Pluto, the ninth planet of our Solar System.



solar system: The eight major planets and their moons in orbit around our sun, together with smaller bodies in the form of dwarf planets, asteroids, meteoroids and comets. spherical: Adjective for something that is round (as a sphere). sun: The star at the center of Earth's solar system. It is about 27,000 light-years from the center of the

IS PLUTO STILL IN THE SOLAR SYSTEM



Pluto was once considered the ninth planet in the solar system, it was demoted in 2006 to dwarf planet status. but still deep in the interior, there's likely an ocean of water, covered by



In 2006, the world lost a lot of stars???actress Shelley Winters, soul icon James Brown, naturalist Steve Irwin???but only one planet: Pluto. Declared the ninth planet in our solar system after



The Solar System [d] is the gravitationally bound system of the Sun and the objects that orbit it. [11] It formed about 4.6 billion years ago when a dense region of a molecular cloud collapsed, forming the Sun and a protoplanetary disc.The ???