

Is there a black hole near Earth?

A black hole weighing as much as 33 suns lurks a mere 2,000 light-years away from our solar system Artist's impression of the system with the most massive stellar black hole in our galaxy. The Milky Way has a big newfound black hole, and it lurks close to Earth!

Can astronomers find a black hole in the Milky Way?

Astronomers made a groundbreaking discovery by detecting a dormant stellar-mass black hole, the closest one to Earth yet found in the Milky Way. This first unambiguous detection of such a black hole presents an exciting opportunity for study, as it is only 1,600 light-years away and can provide insights into the evolution of binary systems.

Where is a dormant black hole located?

This dormant black hole is about 10 times more massive than the sun and is located about 1,600 light-years away in the constellation Ophiuchus, making it three times closer to Earth than the previous record holder.

How close is a black hole to the Sun?

The newly discovered black hole is about 1,011 light-years from our solar system in the star system HR 6819. Unveiled today in *Astronomy & Astrophysics*, the invisible object is locked in an orbit with two visible stars. It's estimated to be about four times the mass of the sun and roughly 2,500 light-years closer than the next black hole.

Which system has the most massive black hole in our galaxy?

Artist's impression of the system with the most massive stellar black hole in our galaxy. The Milky Way has a big newfound black hole, and it lurks close to Earth! This sleeping giant was discovered with the European space telescope Gaia, which tracks the motion of billions of stars in our galaxy.

Are black holes still close to Earth if ejected from the Hyades?

Even if the black holes have been ejected from the Hyades by now, the researchers explain, they would still remain the closest black holes to Earth despite their rogue status. That is according to the simulations, which indicate that if the black holes aren't currently in the Hyades, they are still close to it.

IS THERE A BLACK HOLE NEAR OUR SOLAR SYSTEM



"Luckily for us, astronomers have been tracking ordinary space rocks for decades as they have flown through our Solar System, so we could calculate typical properties of their trajectories and begin to compare them with the very different types of paths and speeds that primordial black holes should follow."



Black holes are tiny compared to their mass. The event horizon of a black hole the mass of the Sun would be no more than 6 kilometers across, and the faster it spins, the smaller that size is. Even a supermassive black hole would fit easily inside our Solar System. Powerful. The combination of large mass and small size results in very strong



The supermassive black hole is located at the heart of a galaxy called M87, located about 55 million light-years away, and weighs more than 6 billion solar masses. Its event horizon extends so far it could encompass much of our solar system out to well beyond the planets.

IS THERE A BLACK HOLE NEAR OUR SOLAR SYSTEM



"Take the solar system, put a black hole where the sun is, I have believed that black holes create suns and since there is a bend in space time, newborn suns get spit out, much like when we get chicken pox or poison ivy. ???



Now, in a new paper, Witten delves into another heady topic, this time a little closer to our cosmic home: If there is a black hole lurking in the deep reaches of our solar system, how could



While the black hole is moving pretty fast, it's not moving fast enough to reach our solar system anytime soon. The likelihood of Earth being hit by a black hole, one of the studies author's

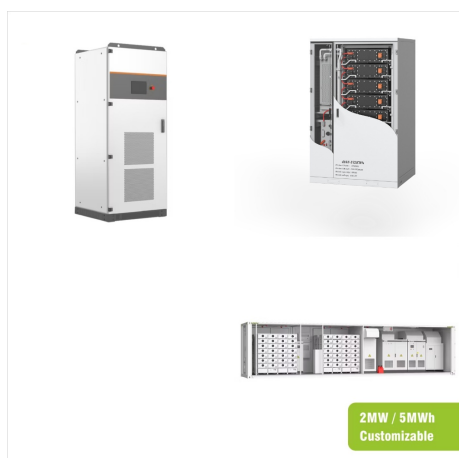
IS THERE A BLACK HOLE NEAR OUR SOLAR SYSTEM



This dormant black hole is about 10 times more massive than the sun and is located about 1,600 light-years away in the constellation Ophiuchus, making it three times closer to Earth than the previous record holder.



The newly discovered black hole is about 1,011 light-years from our solar system in the star system HR 6819. Unveiled today in Astronomy & Astrophysics, the invisible object is locked in an orbit

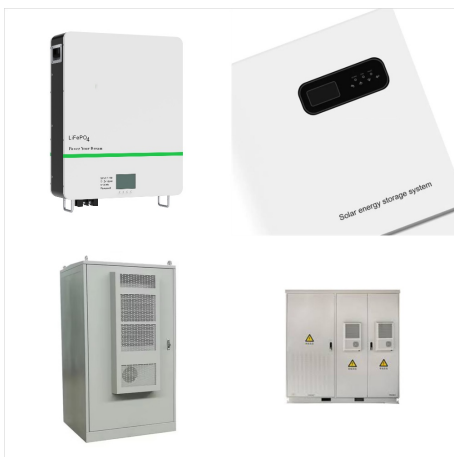


The new work suggests our solar system is located 25,800 light-years from Sagittarius A* (abbreviated Sag A* and pronounced Sag A-Star), the region of our Milky Way's central black hole.

IS THERE A BLACK HOLE NEAR OUR SOLAR SYSTEM



Earth will not fall into a black hole because no black hole is close enough to the solar system for Earth to do that," NASA noted in 2018, adding that the sun isn't big enough to become a black



According to Smethurst, there may be black holes roaming around the universe, with one lurking even in the outskirts of our solar system. "A lot of stars formed in clusters," she said.



Hubble Space Telescope finds closest massive black hole to Earth ??? a cosmic clue frozen in time. "Our simulations can only simultaneously match the mass and size of the Hyades if some black

IS THERE A BLACK HOLE NEAR OUR SOLAR SYSTEM



The supermassive black hole hiding in the center of our galaxy is much closer to Earth, about 2,000 light-years closer, than scientists thought. our solar system is traveling 510,000 mph (227



Milky Way. Gaia-BH3 is located just 2,000 light years from Earth, making it the second-closest black hole to our planet ever discovered. The closest black hole to Earth is Gaia-BH1 (also



Fortunately, this has never happened to anyone ??? black holes are too far away to pull in any matter from our solar system. Hawking showed that if a pair of such particles is created near a black hole, there is a chance that one of them will be pulled into the black hole before it is destroyed. In this event, its partner will escape into

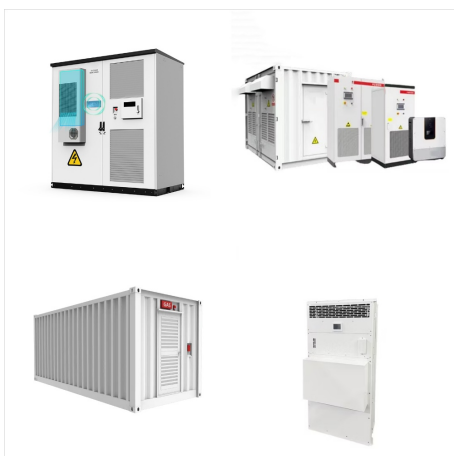
IS THERE A BLACK HOLE NEAR OUR SOLAR SYSTEM



Astronomers are in fact amazingly good at finding even much lighter objects in our solar system, such as small asteroids, whereas direct observation of a small black hole with a telescope would



But only a few dozen have revealed themselves???through the x-ray glow of hot gases that surround them. Now, astronomers have found a "dark" black hole only 1000 light-years away from Earth???just down the road in ???



Astronomers estimate that there should be 100 million black holes roaming among the 100 billion stars in our galaxy. But since black holes emit no light of their own, they are extremely difficult to detect. The nearest star to our solar system, Proxima Centauri, is a little over 4 light-years away. Black holes roaming our galaxy are born

IS THERE A BLACK HOLE NEAR OUR SOLAR SYSTEM



The black hole would also need to be large, the team calculates, at least 163 million times the Sun's mass. That's because smaller supermassive black holes like the one in our Milky Way, weighing in at 4 million solar masses, tend to rip stars or planets apart with tidal forces as they approach. Around larger black holes, tidal disruption doesn't



The scientists ended up focusing on primordial black holes flying near the edge of our solar system, then there must be a lot of them here all of the time - more than 6 times the mass of

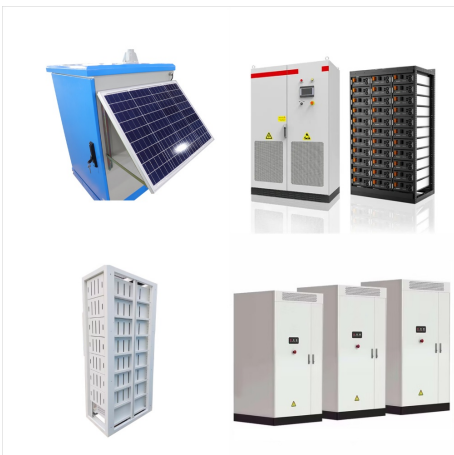


From our vantage point on Earth, the Sun may appear like an unchanging source of light and heat in the sky. But the Sun is a dynamic star, constantly changing and sending energy out into space. The science of studying the Sun and its influence throughout the solar system is called heliophysics. The Sun is [??]

IS THERE A BLACK HOLE NEAR OUR SOLAR SYSTEM



Of the black holes themselves, the researchers were not able to identify precise locations. But the finding, they say, is strongly indicative that the Hyades contains the closest candidate black holes to the Solar System, more than 10 ???



This is a list of known black holes that are close to the Solar System. It is thought that most black holes are solitary, but black holes in binary or larger systems are much easier to detect. Solitary black holes can generally only be detected by measuring their gravitational distortion of the light from more distant objects. As of February 2022, only one isolated black hole has been confirmed, OGLE-2011-BLG-0462, around 5,200 light-years away.