



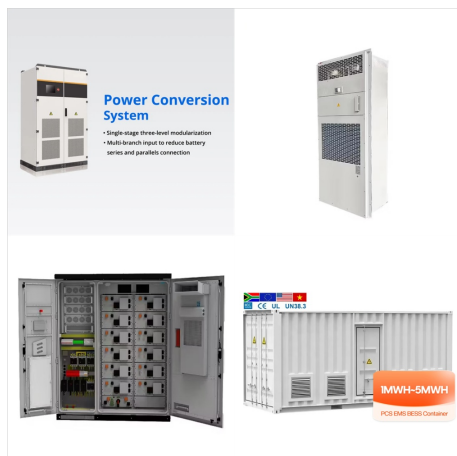
Nexiom Limited an Isle of Man company based in Laxey. We offer a room by room Heatloss Survey for your property. Our services are primarily Electrical contractors undertaking, Renewable Energy, Solar Energy, Electric Boilers, Heat Pumps and ???



Solar output per kW of installed solar PV by season in Isle Of Man. Seasonal solar PV output for Latitude: 54.23, Longitude: -4.57 (Isle Of Man, Isle Of Man), based on our analysis of 8760 hourly intervals of solar and meteorological data (one whole year) retrieved for that set of coordinates/location from NASA POWER (The Prediction of



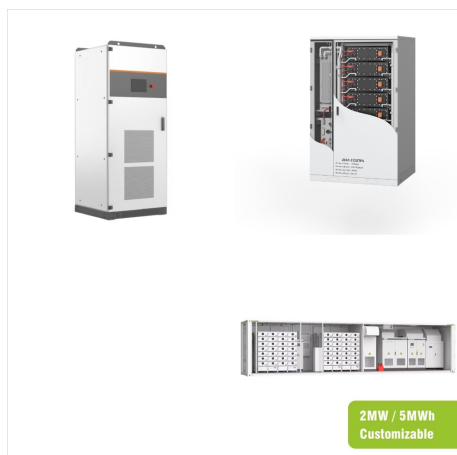
Stephen Snowdon, Planning & Development Manager at Peel Cubico Renewables said: "Our vision for this solar farm supports both the Isle of Man's response to climate change and the government's ambitions for renewable energy projects to help secure a bright economic future for the island. We also recognise the cost-of-living crisis facing



Below is the average daily output per kW of Solar PV installed for each season, along with the ideal solar panel tilt angles calculated for various locations in the Isle of Man. Click on any location for more detailed information. Explore the solar photovoltaic (PV) potential across 2 locations in the Isle of Man, from Isle of Man to Douglas.



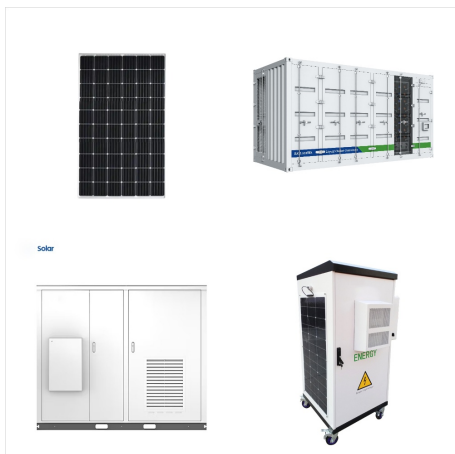
Company profile for installer Manx Solar Eletrical Ltd - showing the company's contact details and types of installation undertaken. ENF Solar.  
Language: Isle of Man Panel Suppliers SunPower Corporation, JA Solar Technology Co., Ltd. Inverter Suppliers



Our Solarview (SV) range gives you a choice of all-in-one, dedicated solar telescopes. All you need to provide is a mount to hold the telescope steady. Apart from delivering a truly astounding performance, these are perfect grab and go scopes.  
Isle of Man, IM9 2AP; info@solarscope .uk  
+44-(0)1624-620 800 ; Go to. Overview;



Plans have been submitted for the Isle of Man's first solar energy farm. The proposed 84-acre development in the south of the island would generate enough electricity to power nearly 8,000 homes



The Isle of Man is home to many palm trees, normally growing in Southern Europe, they find the mild Manx climate well suited, as air temperatures rarely drop below zero. Heat pumps are also well suited to the Manx climate, which has an average annual temperature of 10°C, in comparison the UK's average temperature is 7°C.



**Air Source Heat Pumps** A highly recommended heat pump manufacturer and popular choice with our customers is Mitsubishi. For a typical 3 or 4 bedroom property in the Isle of Man we would install a heat pump out of their EcoDan range, an 11.2kw Ashp complete with a 200L cylinder would cost approximately £12,500, this includes installing and decommissioning of existing ???



6 ? 2024 Weather History in Isle of Man Isle of Man. The data for this report comes from the Isle Of Man / Ronaldsway Airport. See all nearby weather stations. Latest Report ??? 2:50 AM. Sun, Dec 15, 2024 11 min ago UTC 02:50 The solar day over the course of the year 2024. From bottom to top, the black lines are the previous solar midnight



At Manx Eco Installations, we specialise in providing tailored solar solutions for the Isle of Man. Experience these benefits firsthand by partnering with us to embrace solar power's potential. Contact us today to learn how solar energy ???



Proposals for the very first utility-scale solar farm on the Isle of Man have been released by designer Peel Cubico Renewables (PCR). The 26MW Billown Solar Farm in Malew, near Castletown, would certainly produce enough power to fulfill more than 5% of the Isle of Man's power demand, when functional in 2024.



Manx Solar Electrical are the Isle of Man's leading company when it comes to renewable energy, catering for private clients and businesses alike. We pride ourselves on delivering the highest quality of work, as testified by many of our customers. We are the one stop shop for installations of single components, like solar panels or heat pumps and also carry out complete renewable ???

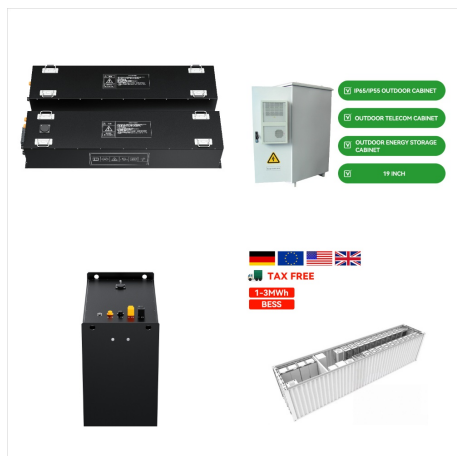


The cells convert the sunlight into electricity, which can be used to run household appliances and lighting. These cells don't need direct sunlight to work ??? they can still generate some electricity on a cloudy day. Many properties in the Isle of Man are suitable for solar PV installations and you would be surprised how much energy you can



, ""? 1/4 ?? 1/4 ?Isle of Man,? 1/4 ?Ellan Vannin,"Mann"? 1/4 ?,50???,??????????????, ???





Solar PV and Solar Thermal panels (unless stated on the applicant's MHEA) Low carbon heating alternatives e.g. heat pumps (unless stated on the applicant's MHEA) and As a responsible nation, and to protect our environment, our community and to safeguard our continued prosperity, the Isle of Man is committed to reaching carbon neutrality