

The DMEGC DM550M10-72HSW/-V is a 550W mono-facial solar module from the M10 Series. The panel utilises P-type Mono-crystalline cells and operates with a module efficiency of 21.29%. Solar Panels are subject to a ?150 ex VAT delivery charge up to 50 panels. This is due to being transported by pallet. This can take up to 48 hours.



The average cost of a standard solar panel installation in Isle of Man is about ?4,000, but this price can go up or down depending on the specific features you're looking for. Solar panel prices have been dropping in recent years, so it's a good time to buy if you're considering making the ???



There may be additional charges for the "offshore domestic regions" and "Scottish Highlands": the Channel Islands, Isle of Wight, Isle of Man, Scilly Isles, Scottish Highlands, Scottish Islands and Northern Ireland.

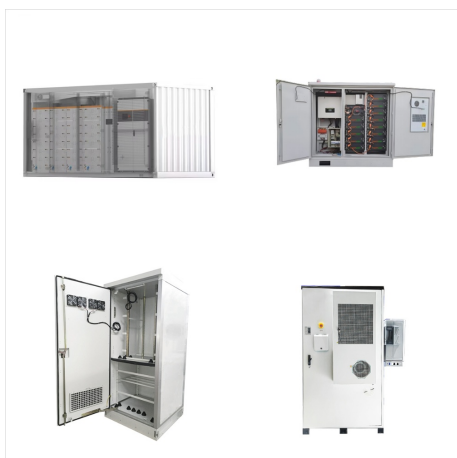
ISLE OF MAN MONO CRYSTALLINE PANEL PRICE



Description: Solar energy product is increasingly popularity these years, this solar panel charger for 12V battery is one of it. It is convenient, environmental-friendly and safe to maintain battery ???



We are proud to present this high-quality 540W solar panel from leading solar panel manufacturer Sharp, which has over 60 years of experience with solar technology and over 50 million solar panels installed all over the world.

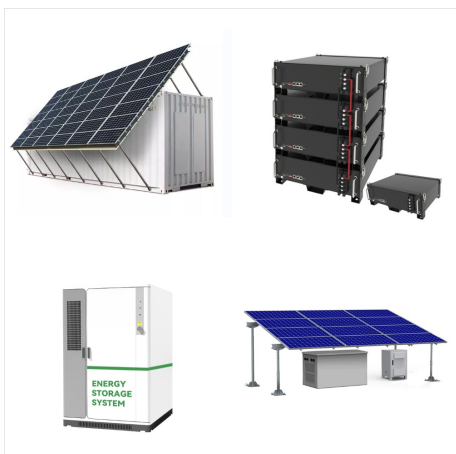


Shop Renogy2pcs 320W Solar Panels 24V Monocrystalline On/Off Grid 640W for RV Boat Shed Farm Home House Rooftop Residential Commercial House, 2 Pieces online at best prices at desertcart - the best international shopping platform in Isle of Man. FREE Delivery Across Isle of Man. EASY Returns & Exchange.

ISLE OF MAN MONO CRYSTALLINE PANEL PRICE



The solar panel kits combine solar panels, charge controllers, cabling and mount systems to ensure a simple, quick installation. They will provide off grid power to substantially reduce the need for a generator or mains hook up.



The Longi Solar 530W MONO Hi-MoX6 Black Frame PERC Half Cell (LR5-66HTH-520-540) solar panel is a 530W monocrystalline PV module featuring Longi's proprietary mono wafer and cell technologies. With an impressive 22.3% efficiency, the half-cell configuration delivers high power output, better temperature coefficient, reduced shading losses, and



The AIKO Neostar 470W, 23.6% Efficiency, N-Type ABC, 54 Cell, Black Frame Gen2 MC4 solar panel is a high-efficiency mono-crystalline module featuring 54 Half-Cell technology and an 11-busbar configuration, reaching an impressive 470Wp.

ISLE OF MAN MONO CRYSTALLINE PANEL PRICE



The AIKO 615W Efficiency 23.8% N-Type ABC, 72 Cell, Silver Frame MC4-EVO-2 (AIKO-A-MAH72Mw) solar panel is a 6155W monocrystalline module with 72 Half-Cell technology and 11Bus-bar half-cell configuration, which can reach up to an incredible power of 615Wp. The frame thickness for this module has been improved from 35mm to 30mm.



The average cost of a standard solar panel installation in Isle of Man is about ?4,000, but this price can go up or down depending on the specific features you're looking for. Solar panel prices have been dropping in recent years, so it's a good time ???



Currently, the average monocrystalline solar cell price is about \$1 to \$1.20 per watt, but this can vary based on factors including the brand and the retailer. Monocrystalline Panel Price by Type. Mono-Si Panels. Typically, ???