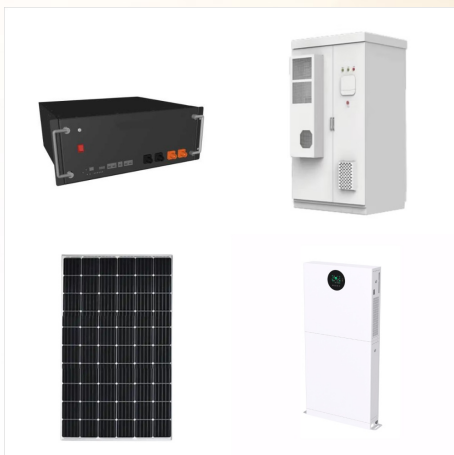




The Community Benefit funds are made available in local areas which surround RWE's renewable energy projects and are provided to, and managed directly by, local independent organisations. The funding processes are designed to be flexible and easily accessible, with funding decisions made by panels of local representatives who know their



Elevion Group, the Netherlands-based energy service provider of Czech CEZ Group, is buying the European and Israeli business of solar PV plant developer Belectric from RWE AG (ETR:RWE), the German energy major said on Friday, confirming an earlier announcement by the German competition regulator.



RWE Renewables" Hickory Park Solar project, a 195.5-MWac facility located in Mitchell County, Georgia. Image: RWE. German utility RWE has completed its acquisition of Con Edison Clean Energy



RWE Renewables ver?ussert das europ?ische und israelische Gesch?ft von Belectric an die Elevion Group B.V. (Elevion). Der in den Niederlanden ans?ssige Energiedienstleister ist Teil der ??EZ-Gruppe ??? eines ???



RWE's installed capacity in the US accounts for one-third of the company's total capacity in the area of renewables. By the end of 2022, RWE aims to expand its global renewables portfolio to more than 13 gigawatts of ???



6 ? Ayalon Vaniche, CEO of EDF Renewables IL, stated as follows: "The Israeli innovation culture is the main reason for which EDF, the giant electricity company, French state-owned utility, decided to invest so much in Israel. I have to say that wave energy generation is a big challenge; the energy of the waves is beyond what the usual human



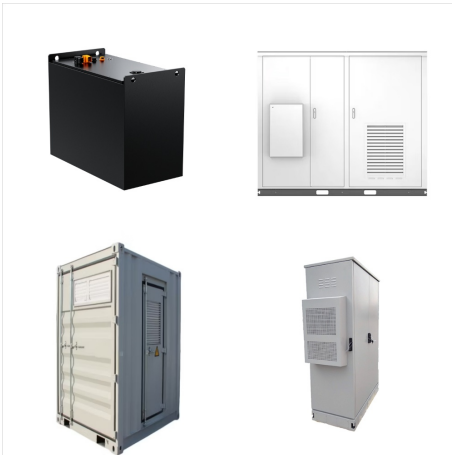
Israel's Ministry of Defence has signed a deal with local renewables developer Energix Renewable Energies Ltd (TLV:ENRG) for the installation of up to 41 wind turbines in the northern Golan Heights to ensure the supply of green electricity to tens of thousands of households in the country.



RWE Renewables has agreed to the sale of Belectric's European and Israeli businesses to the Elevion Group B.V. (Elevion). The Netherlands-based energy service provider is part of the ??EZ Group ??? one of the ten largest energy companies in Europe.



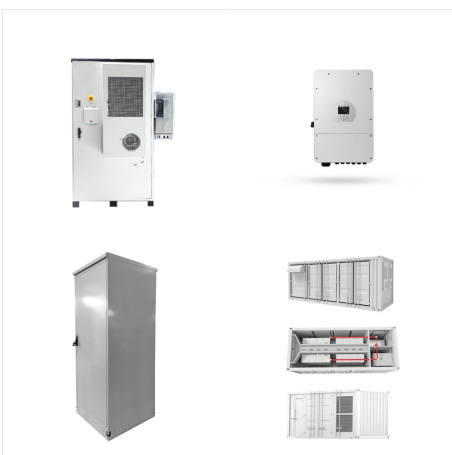
Israel's Ministry of Defence has signed a deal with local renewables developer Energix Renewable Energies Ltd (TLV:ENRG) for the installation of up to 41 wind turbines in the northern Golan Heights to ensure the supply of green electricity to tens of thousands of ???



In Europe, German utility, RWE is seeking to invest in Israeli technologies to expand its global business and provide added value to its customers. RWE Israel Innovation general manager, Mickey Steiner, said that it was looking for to invest in "holistic management technologies" that will facilitate the smart management of electricity



Israel-based builder and operator of wind and solar energy projects ??? Enlight Renewable Energy has announced that it has secured financing for its 189 MW (39 turbines) wind farm project in the Israeli-controlled Golan Heights. The work on the development of the full project is estimated to cost 1.25 billion shekels (USD 366 million).



RWE Renewables is a subsidiary of Germany-based RWE Group, Free Report Wind Power Market seeing increased risk and disruption. The wind power market has grown at a CAGR of 14% between 2010 and 2021 to reach 830 GW by end of 2021.



RWE Renewables ver?ussert das europ?ische und israelische Gesch?ft von Belectric an die Elevion Group B.V. (Elevion). Der in den Niederlanden ans?ssige Energiedienstleister ist Teil der ??EZ-Gruppe ??? eines der zehn gr?ssten Energieunternehmen in ???



RWE Renewables Ireland is leading the delivery of offshore wind projects with an expanding portfolio to support Ireland delivering its ambitious targets for the delivery of 5GW offshore wind by 2030, and at least 37GW by 2050. (Israel) and Lausanne (Switzerland). Close. Andy Kelly Director, AFRY.



RWE Renewables has agreed to the sale of Belectric's European and Israeli businesses to the Elevion Group B.V. (Elevion). The Netherlands based energy service provider is part of the ??EZ Group ??? one of the ten largest energy companies in Europe.



In Europe, German utility, RWE is seeking to invest in Israeli technologies to expand its global business and provide added value to its customers. RWE Israel Innovation general manager, Mickey Steiner, said that ???



6 ? Ayalon Vaniche, CEO of EDF Renewables IL, stated as follows: "The Israeli innovation culture is the main reason for which EDF, the giant electricity company, French state-owned utility, decided to invest so much in Israel. I have to say that wave energy generation is a big ???



Elevion Group, the Netherlands-based energy service provider of Czech CEZ Group, is buying the European and Israeli business of solar PV plant developer Belectric from RWE AG (ETR:RWE), the German energy major said on Friday, confirming an earlier ???



Israel-based builder and operator of wind and solar energy projects ??? Enlight Renewable Energy has announced that it has secured financing for its 189 MW (39 turbines) wind farm project in the Israeli-controlled Golan ???



Geschäftsbereiche: Stromerzeugung aus Windkraft an Land, Solar und Batteriespeichern: Fakten zur Gesellschaft: Als hundertprozentige Tochtergesellschaft des RWE-Konzerns verfügt die RWE Renewables Europe & Australia über erstklassige Ressourcen und Kompetenzen entlang der gesamten Wertschöpfungskette ??? von der Entwicklung über den Bau bis zum Betrieb von ???



RWE Renewables Mexico is a wholly owned RWE Clean Energy subsidiary, incorporated in Mexico in 2019. RWE Mexico consolidates RWE's renewable market activity and is focused on developing a strong, diversified, and profitable project pipeline of wind, solar and storage assets.



RWE Renewables has agreed to the sale of Belectric's European and Israeli businesses to the Elevion Group B.V. (Elevion). The Netherlands based energy service provider is part of the ??EZ Group ??? one of ???



RWE is a globally leading renewables player with an attractive growth platform, increasing our renewables portfolio by 2-3 GW p.a. in the most attractive markets globally. The Renewables International Graduate Programme is unique as it allows you to rotate through every company within RWE so you gain a broad and wide-ranging understanding of



???RWE
Renewables????????,?????(R)????????????
????????????????????<????????????????????50??
?????????? 3/4 ?????? ??????-?? 1/4
?????<????????????????????(R)????? 1/4
????????? 1/4 ??????<?????(R)??(R)???