

Where is Itel located?

Itel is located in Montego Bay, Jamaica. Founded in 2012, itel has expanded its operations throughout the Caribbean and across the broader Americas region, now operating in seven different countries.

Is Itel a resilient CX provider?

MONTIGO BAY, Jamaica, Aug. 29, 2024 /PRNewswire/-- Despite a challenging quarter for most industries, itel, the Caribbean's largest homegrown international CX provider, has shown remarkable resilience by doubling down on its expansion in Jamaica, increasing its employee headcount to serve two new clients in the logistics and retail sectors.

Why is Itel hiring blitzes in Jamaica?

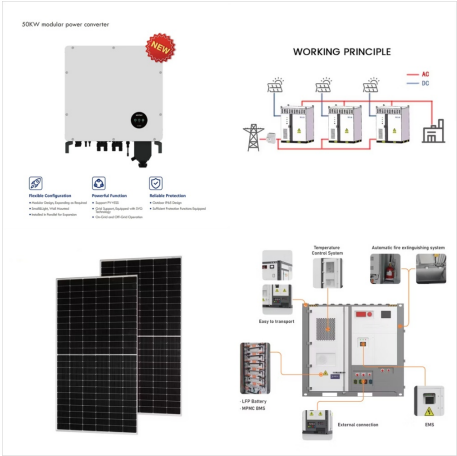
To serve such demand, itel has engaged in several hiring blitzes across Jamaica, looking to add to its already strong workforce of nearly 2,000 employees on the island, signaling to the market that itel continues its robust growth trajectory, despite unpredictable economic conditions.

Why is Jamaica a global service destination?

Jamaica continues to solidify its place as the leading global service destination in the Caribbean through initiatives such as the 5-year Global Services Sector Project. Kingston is the capital and corporate center of Jamaica.

How is Itel integrating AI into its global operating model?

Simultaneously, itel is diversifying its technology and innovation platform proactively integrating AI into its global operating model. The company has already launched its suite of generative AI features developed in-house to support a customized approach to customer experience delivery.



Despite a challenging quarter for most industries, itel, the Caribbean's largest homegrown international CX provider, has shown remarkable resilience by doubling down on its expansion in



itel Increases its Jamaica Footprint, Signaling a New Strategic Direction. Despite a challenging quarter for most industries, itel has shown remarkable resilience by doubling down on its Jamaica expansion??? Continue Reading



This is a list of electricity-generating power stations in Jamaica, sorted by type and name. In Jamaica, the Jamaica Public Service Company (JPS) has a monopoly on the "transmission, distribution and supply of electricity". [1] However, JPS ???



itel, an award-winning customer experience provider founded in Jamaica, celebrated the grand opening of its newest site located on Chalmers Avenue in Kingston with an event held on May 25. Next month itel celebrates ???



(Montego Bay, August 29, 2024) Despite a challenging quarter for most industries, itel, the Caribbean's largest homegrown international CX provider, has shown remarkable resilience by doubling down on its expansion in Jamaica, increasing its employee headcount to serve two new clients in the logistics and retail sectors.



itel, an award-winning customer experience provider founded in Jamaica, celebrated the grand opening of its newest site located on Chalmers Avenue in Kingston with an event held on May 25. Next month itel celebrates its 10-year anniversary and this is its second location in the capital city.



Jamaica-based itel has firmly established itself as a prominent player in the nearshore industry. Founded in 2012 in Montego Bay, itel embarked on a remarkable journey of growth, expanding its operations not only throughout the Caribbean but also across the broader Americas region.



CX provider ITEL was in high spirits in late May, when the company officially launched its second site in the Jamaican capital of Kingston just a month ahead of its 10th year anniversary celebration. The opening of the site ???located on Kingston's Chalmers Avenue??? took place in May 25, in the midst of a grand opening attended by ITEL



CX provider ITEL was in high spirits in late May, when the company officially launched its second site in the Jamaican capital of Kingston just a month ahead of its 10th year anniversary celebration. The opening of ???



To accommodate its growth, itel is conducting hiring initiatives across Jamaica, aiming to add to its current workforce of nearly 2,000 employees on the island. The company is expanding its operations in Kingston to serve a new logistics and transportation client while restructuring and expanding its support services in Montego Bay for a major



Jamaica-based itel has firmly established itself as a prominent player in the nearshore industry. Founded in 2012 in Montego Bay, itel embarked on a remarkable journey of growth, expanding its operations not only ???