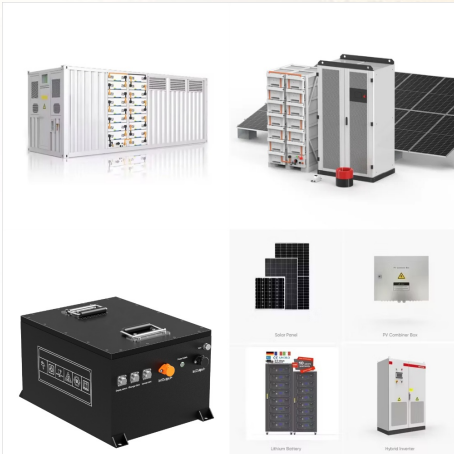
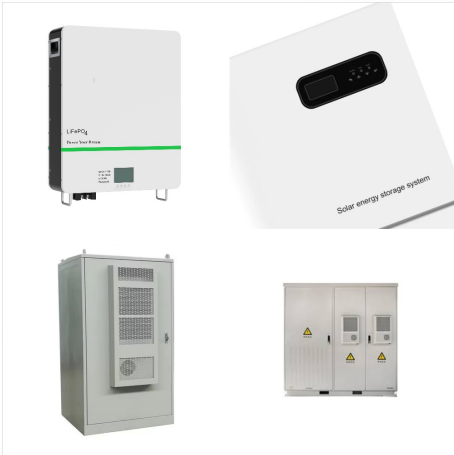




Svalbard e Jan Mayen (in norvegese Svalbard og Jan Mayen) ? una classificazione statistica definita dallo standard ISO 3166-1 [1] di due territori insulari della Norvegia settentrionale (Isole Svalbard e Jan Mayen). Svalbard e Jan Mayen sono anche accomunate dallo stesso dominio di primo livello nazionale, .sj.



Svalbard Energi, Longyearbyen. 547 likes ? 32 talking about this ? 1 was here. Svalbard Energi AS er verdens nordligste kraftproduksjonsselskap. Svalbard Energi | Longyearbyen Svalbard ???



Internet use in Svalbard and Jan Mayen in 2024. There were 2,435 internet users in Svalbard and Jan Mayen in January 2024.. Svalbard and Jan Mayen's internet penetration rate stood at 93.8 percent of the total ???

# JAYA OPTIMAL ENERGI SVALBARD AND JAN MAYEN



? 1/4 ?? 1/4 ?Svalbard og Jan Mayen,ISO 3166-1 ?  
1/4 ?SJ,ISO 3166-1 ? 1/4 ?SJM,ISO 3166-1 ? 1/4  
?744? 1/4 ?,???,???.sj???? ???



Jan Mayen. Die norwegische Insel Jan Mayen wird oft in einem Atemzug mit Spitzbergen und Svalbard genannt. In der Tat wurde die Insel bis Ende 1994 vom Sysselemanden in Longyearbyen verwaltet, aber seitdem geschieht das vom Festland aus. Die ???



Svalbard and Jan Mayen. 744. SJM. DOPA Explorer is the Joint Research Centre's web based information system on the world's protected areas, which helps the European Commission and other users to assess the state of and the pressure on protected areas at multiple scales.

# JAYA OPTIMAL ENERGI SVALBARD AND JAN MAYEN



Svalbard e Jan Mayen ou Esvabarda e Jan Mayen ? uma designa??o estat?stica definida pelo padr?o ISO 3166-1 de duas partes da Noruega localizadas no Oceano ?rtico sob jurisdic??es distintas: Svalbard e Jan Mayen. Enquanto os dois s?o combinados para efeitos da categoria ISO, n?o est?o relacionados administrativamente.

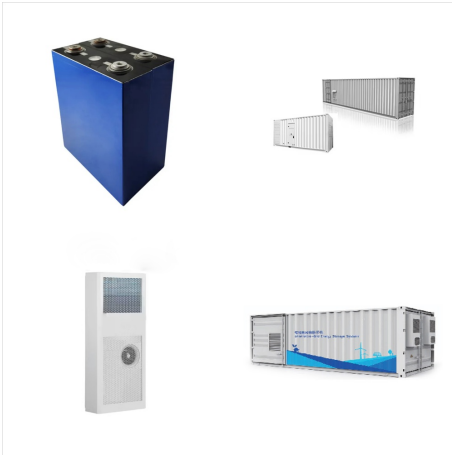


Svalbard i Jan Mayen (norw. Svalbard og Jan Mayen, ISO 3166-1 alfa-2: SJ, ISO 3166-1 alfa-3: SJM, ISO 3166-1 numeryczny: 744) jest nazw?? statystycznej jednostki zdefiniowan?? w ISO 3166-1. Sk??ada si?? z dw?ch norweskich terytori?w z niezale? 1/4 n?? jurysdykcj??: Svalbard i Jan Mayen. Terytoria te s?? po????czone dla cel?w klasyfikacji Mi??dzynarodowej Organizacji ???



Sunrise Sunset Times of Svalbard, Svalbard and Jan Mayen Location: Svalbard and Jan Mayen > Timezone: Arctic/Longyearbyen. Current Time: 2024-12-07 07:41:31. Longitude: 20.9751822 Latitude: 77.8749725 Sunrise Today: 01:00:00 AM. Sunset Today: 01:00:00 AM. Daylength Today:

# JAYA OPTIMAL ENERGI SVALBARD AND JAN MAYEN



Im norwegischen Sprachgebrauch heisst die Inselgruppe Svalbard ("K?stehle K?ste"). Jan Mayen ist eine 373 km<sup>2</sup> grosse Insel ca. 650 km nord?stlich von Island in der Gr?nlandsee und ist politisch gesehen ein integraler Teil Norwegens, geh?rt jedoch zu keiner der norwegischen Provinzen. Die Inselgruppe Spitzbergen liegt n?rdlich des



Internet use in Svalbard and Jan Mayen in 2024. There were 2,435 internet users in Svalbard and Jan Mayen in January 2024.. Svalbard and Jan Mayen's internet penetration rate stood at 93.8 percent of the total population at the start of 2024.. Kepios analysis indicates that internet users in Svalbard and Jan Mayen increased by 423 (+21.0 percent) ???



Jan Mayen is a volcanic island in the Arctic Ocean located at the border of the Norwegian Sea and the Greenland Sea. The single island covers an area of 377 square kilometres (146 sq mi) and is dominated by the 2,277-metre (7,470 ft) tall Beerenberg volcano. The island's only population is a combined military and meteorological outpost that operates a LORAN-C ???

# JAYA OPTIMAL ENERGI SVALBARD AND JAN MAYEN



8.1.1 Svalbard and Jan Mayen mean monthly temperature of 5°C in August and -6°C in February and March. Average annual precipitation at the meteorological station is about 700 mm, but there are large variations with height above sea level.



Svalbard and Jan Mayen islands guarantee you sun, magical beaches, and unique cultural heritage. There is hardly a place less traveled by tourists. The Berenberg peak dominates the island's panorama - it is the world's northernmost active surface volcano. Jan Mayen is uninhabited. The only inhabitants of the island are the Norwegian weather station staff, to whom the islands are named.



Planning a trip to Svalbard and Jan Mayen? Based on weather conditions, the best time to visit is during June, April, July, see the table below for more details.. On this page, you will find detailed climate data, graphs, and insights about Svalbard and Jan Mayen to help you plan your trip and choose the most optimal time to visit.

# JAYA OPTIMAL ENERGI SVALBARD AND JAN MAYEN



PT Jaya optimal energi memposisikan diri sebagai penyedia jasa konsultasi untuk menata, memperbaiki, mengembangkan, dan mengajarkan kepada SDM serta bisnis anda akan pentingnya continuous improvement. Jalan Raya Gading Pantai No.15-17, Dukuh Sutorejo, Kec. Mulyorejo, Kota SBY, Jawa Timur 60134.



Svalbard and Jan Mayen (Norwegian: Svalbard og Jan Mayen, ISO 3166-1 alpha-2: SJ, ISO 3166-1 alpha-3: SJM, ISO 3166-1 numeric: 744) is a statistical designation defined by ISO 3166-1 for a collective grouping of two remote jurisdictions of Norway: Svalbard and Jan Mayen. While the two are combined



The gross salary range for people working in Svalbard and Jan Mayen is typically from 12,035 NOK (minimum salary) to 38,101 NOK (highest average, actual maximum salary is higher). This is the total monthly salary including bonuses. Salaries can vary drastically among different job categories. If you are interested in the salary of a particular

# JAYA OPTIMAL ENERGI SVALBARD AND JAN MAYEN



Svalbard et Jan Mayen. Svalbard et Jan Mayen est un terme statistique qui fait référence à deux territoires norvégiens de l'océan Arctique : l'archipel de Svalbard (ou plus souvent l'archipel du Spitzberg en français, bien que le nom ne désigne normalement que la plus grande île de l'archipel), et l'île Jan Mayen, (non loin du nord-est de l'Islande, ou à l'est du



Bandera de Noruega, utilizada para representar a Svalbard y Jan Mayen Ubicación de Svalbard. Svalbard y Jan Mayen es una denominación utilizada por la ISO 3166-1 [1] con fines estadísticos, en el que se agrupan dos territorios de Noruega con jurisdicciones separadas: Svalbard y Jan Mayen.. Tanto Svalbard como Jan Mayen son "parte del Reino de Noruega", aunque no están ???



Webcam - Jan Mayen - This Jan Mayen webcams shows what it looks like in Jan Mayen right now. It includes a map that shows the location of the camera. Jan Mayen . Jan Mayen Introduction; Jan Mayen information; Expedition to Jan Mayen; Jan Mayen Book; Links and literature; Photos, Webcam Panos & Video; Rolf Stange; Spitsbergen

# JAYA OPTIMAL ENERGI SVALBARD AND JAN MAYEN



? 1/4 ?? 1/4 ? Svalbard og Jan Mayen,ISO 3166-1 ?  
1/4 ?SJ,ISO 3166-1 ? 1/4 ?SJM,ISO 3166-1 ? 1/4  
?744? 1/4 ?,??? ,???